

User's Guide for the Interactive RadioEpidemiological Program (NIOSH-IREP)

**Designed for use by the Department of Labor
in adjudicating claims under the Energy
Employees' Occupational Illness
Compensation Program Act (EEOICPA)**

Version 5.2

January 15, 2003

This User's Guide was prepared by SENES Oak Ridge, Inc. under contract with NIOSH.



*National Institute for
Occupational Safety and Health*



SENE Oak Ridge Inc.
Center for Risk Analysis

TABLE OF CONTENTS

	<u>Page</u>
1.0 BACKGROUND.....	3
2.0 INTRODUCTION.....	4
3.0 DETERMINING PROBABILITY OF CAUSATION.....	5
Step 1: Log onto NIOSH-IREP	5
Step 2: Start Program.....	6
Step 3: Upload Claimant Input File	7
Step 4: Perform Calculation.....	8
Step 5: Print and Save Output Summary Report	10
Step 6: Perform Additional Calculations (if necessary)	11
A. Multiple primary cancers	12
B. Alternate cancer models for a given primary cancer.....	14
C. Unknown primary cancer site.....	14
D. Skin Cancer, if more than one ethnic origin.....	14
E. Conflicting primary cancer sites	14
4.0 TECHNICAL ASSISTANCE.....	15
5.0 INPUT FILE TEMPLATE	15
6.0 GLOSSARY.....	16
7.0 DESCRIPTION OF EXAMPLE INPUT FILES	23

1.0 BACKGROUND

Under the Energy Employees' Occupational Illness Compensation Program Act (EEOICPA), the National Institute for Occupational Safety and Health (NIOSH) is charged with the development of guidelines to determine whether a claimant's cancer meets the criterion for causation by workplace exposure to ionizing radiation (i.e., a 50% or greater probability of causation).

The basis for this determination, as specified in EEOICPA, is the set of radioepidemiological tables developed by a National Institutes of Health (NIH) working group in 1985. These radioepidemiological tables serve as a reference tool providing probability of causation (PC) estimates for individuals with cancer who were exposed to ionizing radiation.

A major technological change accompanying the most recent update to the 1985 radioepidemiological tables represents a scientific as well as a practical improvement: the development of a computer program for calculating probability of causation. This software program, named the Interactive RadioEpidemiological Program (IREP), allows the user to apply the National Cancer Institute's (NCI) risk models directly to data about exposure for an individual employee. This makes it possible to calculate the probability of causation using better quantitative methods than could be incorporated into printed tables. In particular, IREP allows the user to take into account uncertainty concerning the information being used to estimate individualized exposure and to calculate the probability of causation.

Accounting for uncertainty is important because it can have a large effect on the probability of causation estimates for a specific individual. The Department of Veterans Affairs (VA), in their application of the 1985 radioepidemiological tables, uses the value at the upper 99 percent credibility limit of the probability of causation estimate. Similarly, as required by EEOICPA, the U.S. Department of Labor (DOL) will use the upper 99 percent credibility limit to determine whether the cancers of employees were caused by their radiation doses. This will help minimize the possibility of denying compensation to claimants under EEOICPA for those employees with cancers likely to have been caused by occupational radiation exposures.

A version of IREP has been developed to specifically address the workforce covered by EEOICPA. This version, called NIOSH-IREP, is tailored to the risks and radiation exposures characteristic of energy employees. NIOSH-IREP will be used by DOL to calculate the probability of causation for each claim.

New Features* in NIOSH-IREP

*Since the first User's Guide was issued in April 2002; includes improvements made based on comments received from DOL staff during April 2002 IREP training sessions

- **Revised NIOSH-IREP software program**
 - ▶ New opening screen prompts choice of manual entry or input file use
 - ▶ Separate input file will be provided by NIOSH for each cancer model that is to be run for each claim
 - ▶ Default online sample size now set to 2000 (formerly, 1000)
 - ▶ For claims in which initial PC would be $\geq 45\%$ but $< 50\%$, input file will be preset to sample size of 10,000, with new random number seed
 - ▶ Multiple primary cancers calculation is now automated: no need to work out equation – instead, just plug in separate PC results online

 - **Updated *User's Guide***
 - ▶ Includes all changes made to software since April 2002
 - ▶ Revised and expanded 7-page glossary (pgs. 16-22)
 - ▶ Includes file-naming convention for input files (pg. 11)
 - ▶ Expanded coverage of claims needing extra calculations (pgs. 11-14)
 - ▶ Includes new screenshots: log-on (pg. 5), summary report (pg. 9), "Multiple Primary Cancers" online function (pg. 13), input file template (pg. 15)
-

INTRODUCTION

The NIOSH-IREP computer code is a web-based program that estimates the probability that an employee's cancer was caused by his or her individual radiation dose. Personal information (e.g., birth year, year of cancer diagnosis, gender) and exposure information (e.g., exposure year, dose) may be entered manually or through the use of an input file. For application by the U.S. Department of Labor (DOL), the input file option will be used to preset all personal information, exposure information, and system variables. These input file(s) will be created by NIOSH for each individual claim and transmitted to the appropriate DOL district office for processing.

The purpose of this user's guide is to provide DOL with a concise step-by-step guide to the use of NIOSH-IREP in processing energy employee compensation claims.

A glossary containing definitions of radiation terms and other frequently used terms related to NIOSH-IREP is included in Section 6.0 of this user's guide. Readers interested in a more thorough discussion of the science behind NIOSH-IREP are encouraged to review the Technical Documentation and similar documents posted on NIOSH's Office of Compensation Analysis and Support (OCAS) web site at www.cdc.gov/NIOSH/OCAS.

A 3.5-inch floppy disk containing example input files is attached to the back cover of this report. These files are to be used in conjunction with this user's guide to demonstrate the use of NIOSH-IREP. Section 7.0 describes the input files and provides pre-calculated solutions for each case.

DETERMINING PROBABILITY OF CAUSATION

STEP 1: Log onto NIOSH-IREP

NIOSH-IREP can be accessed through NIOSH's Office of Compensation Analysis and Support (OCAS) web site at:

[http:// www.cdc.gov/niosh/ocas/ocasirep.html](http://www.cdc.gov/niosh/ocas/ocasirep.html)

Click on the bullet entitled "[NIOSH-IREP \(on-line software program\)](#)."

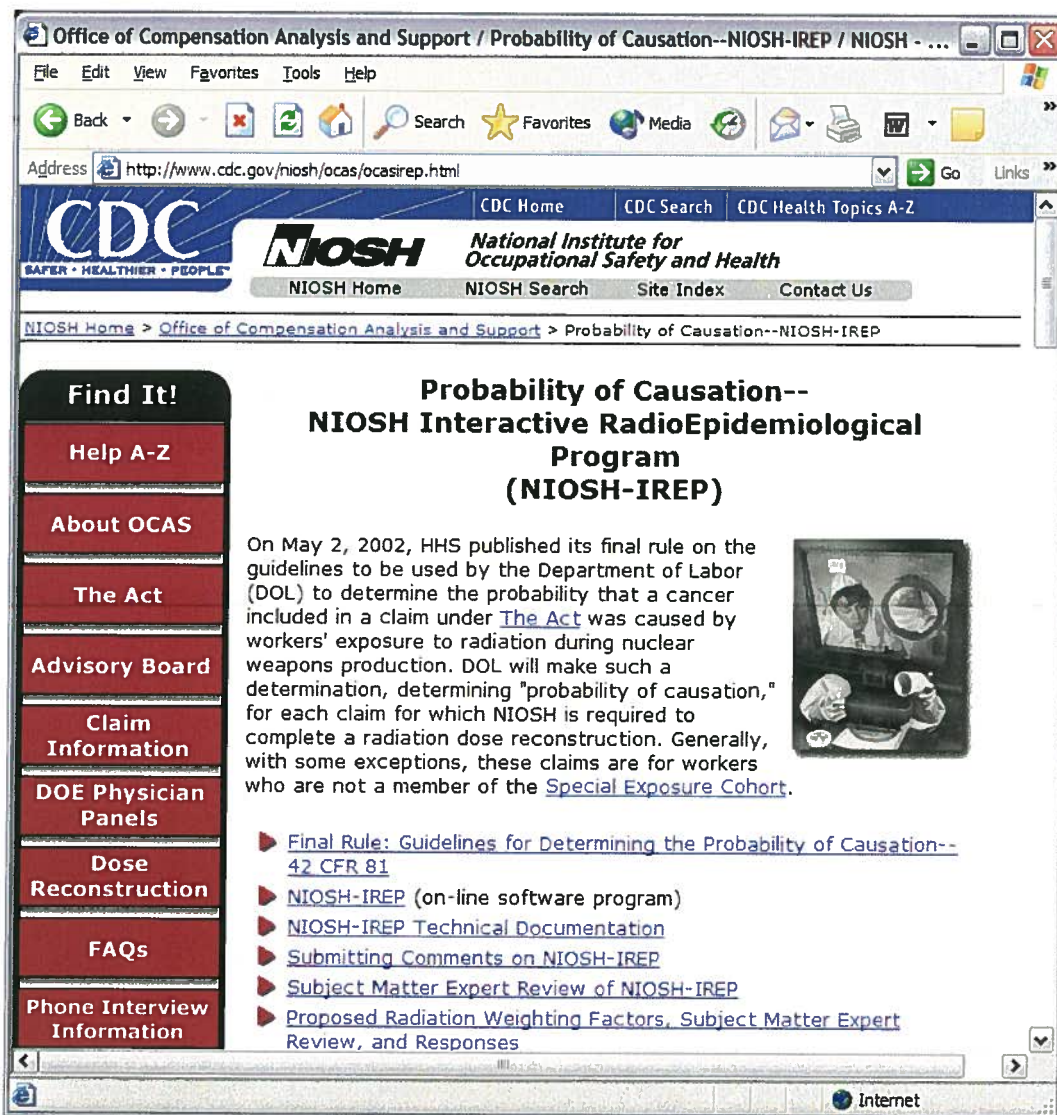


Figure 1. NIOSH web page containing the link to NIOSH-IREP

STEP 2: Start Program

On the initial log-in screen (Figure 2), select the option "To begin by using a NIOSH-provided input file" to start NIOSH-IREP.

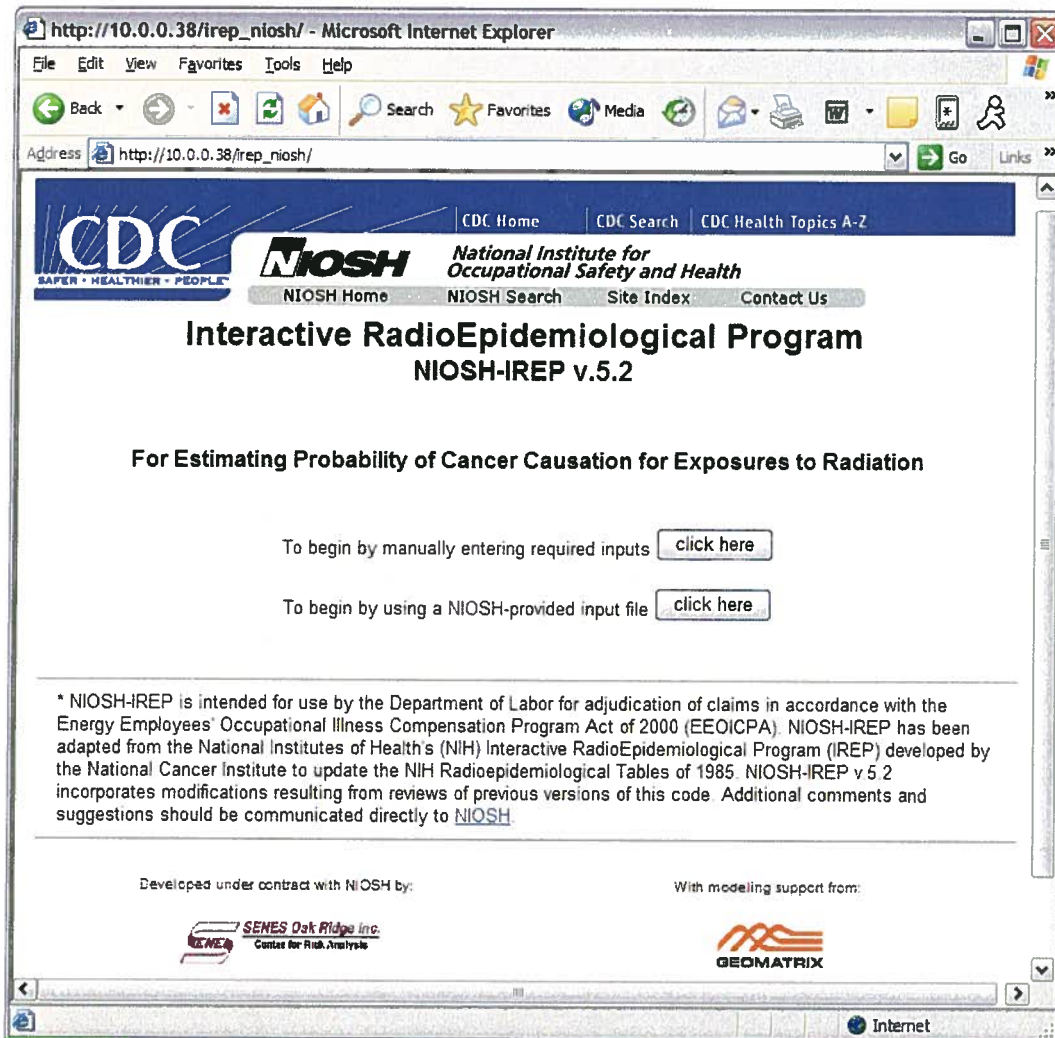


Figure 2. Initial log-in screen of the NIOSH-IREP computer program

NOTE: This screen allows a user to choose to enter personal information (e.g., birth year, year of cancer diagnosis, gender) and exposure information (e.g., exposure year, dose) manually (click on top button) or through the use of an input file (bottom button.)

As specified by 42 CFR Part 81 (Guidelines for Determining the Probability of Causation), DOL will use the data input file option to preset all personal information, exposure information, and system variables. This input file will be created by NIOSH, as specified by 42 CFR Part 82 (Methods for Radiation Dose Reconstruction), and transmitted to the appropriate DOL District Office for processing.

STEP 3: Upload Claimant Input File

- The first step of uploading a claimant input file is to identify where the file resides. Click the "Browse" button on the screen shown in Figure 3.
- Locate the input file in the "Choose file" dialog box (Figure 4). Once the input file is selected, click the "Open" button to upload it.
- The file and path will appear beside the "Browse" button (Figure 5). Click "Upload File."
- A status message will appear, including the name of the uploaded file (Figure 6). Click "Continue" to populate the fields of the main input screen (as shown in Figure 7, next page) with the values saved in the input file.

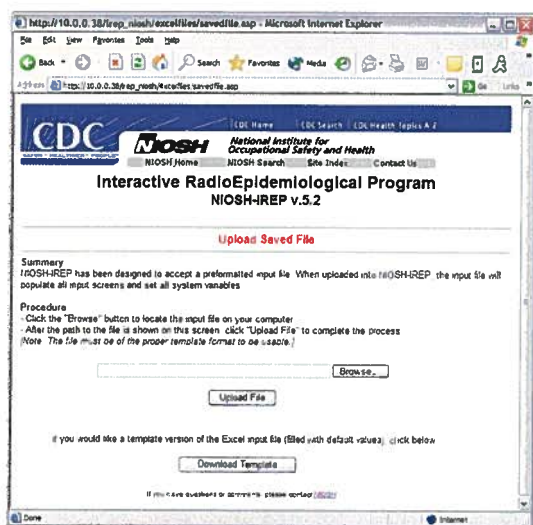


Figure 3. "Upload Saved File" screen

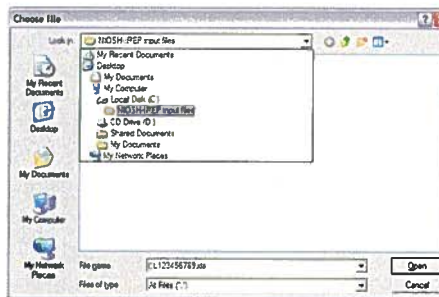


Figure 4. "Choose file" dialog box

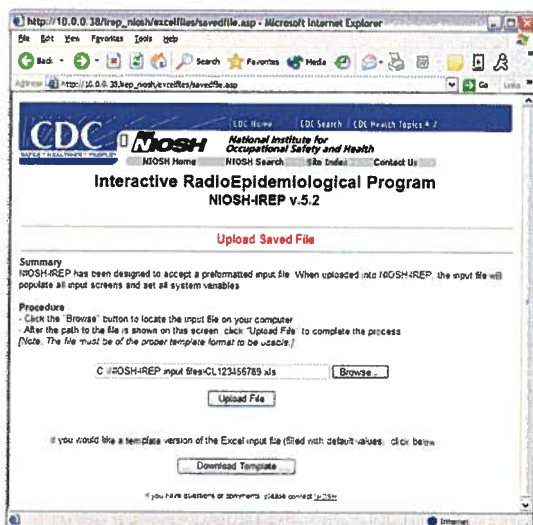


Figure 5. Choose file dialog box

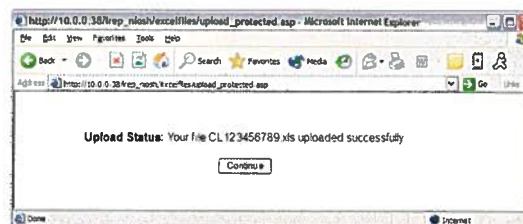


Figure 6. Success!

STEP 4: Perform Calculation

To calculate probability of causation, click the "Generate Results" button on the main input screen (Figure 7).

The claimant's information will be sent to the server that hosts NIOSH-IREP. The calculation will be performed in real-time, and the results will be returned in the form of a summary table suitable for printing and saving (Figure 8, next page).

The screenshot shows the NIOSH-IREP v.5.2 main input screen. The browser window title is "http://10.0.0.38/irep_niosh/inputs1.asp - Microsoft Internet Explorer". The address bar shows "http://10.0.0.38/irep_niosh/inputs1.asp". The page header includes the CDC logo and "National Institute for Occupational Safety and Health". The main title is "Interactive RadioEpidemiological Program NIOSH-IREP v.5.2".

The form is divided into two main sections: "Personal Information" and "Exposure Information".

Personal Information:

- Claimant Name: John Q. Doe
- NIOSH ID #: 123456
- Claimant SSN: 123-45-6789
- DOL District Office: CL
- Gender: Male
- Birth Year: 1931
- Year of Diagnosis: 1991
- Claimant Cancer Diagnoses: Enter Diagnoses
- Cancer Model (ICD-9 code): Oral Cavity and Pharynx (140-149)
- Should alternate cancer model be run?: No
- Inputs for Skin and Lung Cancer Only: Enter Data

Exposure Information:

- Number of Exposures: 1
- Dose Input Information: Enter Doses
- Other Advanced Features: Adv Features

Buttons:

- Use Data Input File
- Go to Upload Page
- Calculate Probability of Causation
- Generate Results

Figure 7. Main input screen

Summary Report - Microsoft Internet Explorer

File Edit View Favorites Tools Help

Address http://10.0.0.38/irep_niosh/summ_report.asp

NIOSH-Interactive RadioEpidemiological Program
 Probability of Causation Results

Date of Run: 12/06/2002 DOL District Office: CL
 Time of Run: 9:49:40 AM NIOSH-IREP version: 5.2
 NIOSH ID #: 123456 Claimant SSN: 123-45-6789
 Claimant Name: John Q. Doe

Claimant Cancer Diagnoses:

Primary Cancer #1: <u>N/A</u>	Date of Diagnosis: <u>N/A</u>
Primary Cancer #2: <u>N/A</u>	Date of Diagnosis: <u>N/A</u>
Primary Cancer #3: <u>N/A</u>	Date of Diagnosis: <u>N/A</u>
Secondary Cancer #1: <u>N/A</u>	Date of Diagnosis: <u>N/A</u>
Secondary Cancer #2: <u>N/A</u>	Date of Diagnosis: <u>N/A</u>
Secondary Cancer #3: <u>N/A</u>	Date of Diagnosis: <u>N/A</u>

Claimant Information Used In Probability of Causation Calculation:

Gender: <u>Male</u>	Race (skin cancer only): <u>N/A</u>
Birth Year: <u>1921</u>	Year of Diagnosis: <u>1991</u>
Cancer Model: <u>Oral Cavity and Pharynx (140-149)</u>	Should alternate cancer model be run?: <u>No</u>
Smoking history (trachea, bronchus, or lung cancer only): <u>N/A</u>	

NIOSH-IREP Assumptions and Settings

User Defined Uncertainty Distribution: Lognormal(1,1)

Number of Iterations: 2000 Random Number Seed: 99

General Exposure Information:

Exposure #	Exposure Year	Organ Dose (cSv)	Exposure Rate	Radiation Type
1	1971	Lognormal(2,2)	chronic	electrons E<15keV

Radon Exposure Information:
 N/A (applies only to cases of Lung Cancer with Radon Exposures)

Results of NIOSH-IREP

Probability of Causation:

1st percentile	0.00 %
5th percentile	0.04 %
50th percentile	0.40 %
95th percentile	2.22 %
99th percentile	4.56 %

To perform another calculation, click here:

Done Internet

Figure 8. NIOSH-IREP Summary Report

STEP 5: Print and Save Output Summary Report

To Print:

When the calculation is completed, the output summary report can be printed by using the "Print" command in the "File" menu.

To Save:

An electronic copy of the output summary report can be saved using the "Save As" command in the "File" menu.

In the "Save Web Page" dialog window, name the file and select the location where the file is to be saved.

[NOTE: Select "Web Page: complete" from the "Save as type" pull-down menu]

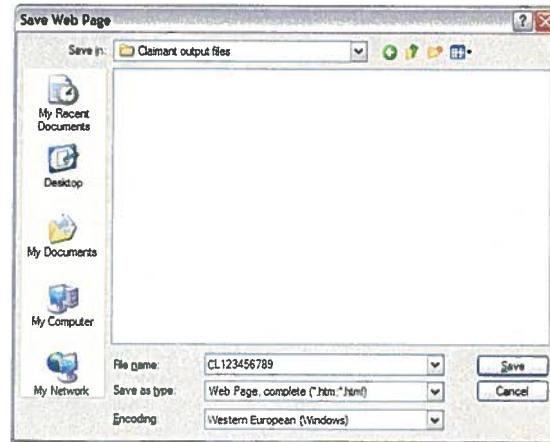


Figure 9. "Save Web Page" dialog window

STEP 6: Perform Additional Calculations (if necessary)

There are several circumstances in which DOL will need to perform additional calculations for a given claimant. When additional calculations are required, NIOSH will prepare a separate input file for each cancer model that is to be run in NIOSH-IREP. NIOSH will change the "Should alt model be run?" field in each input file from the default "No" to "Yes." This question is displayed on the main input screen (Figure 10). If the answer is "Yes", at least one additional NIOSH-IREP run will be necessary.

If a new run is required, click the "New Calculation" button at the bottom of the NIOSH-IREP Summary Report (Figure 8, Page 9) and upload the next input file.

Note: In cases where the upper 99 percent credibility limit of the probability of causation is equal to or greater than 45% but less than 50%, using the default simulation sample size of 2000, it will not be necessary for DOL to perform additional calculations. For these claims, NIOSH will increase the sample size to 10,000, choose a new random number seed, and preset these new parameters to the input file that is sent to DOL.

File Naming Convention

File names for multiple input files will adhere to the following naming convention: NIOSH will add an underscore and sequential letter of the alphabet to the end of the file name. For example, if a claim originating from DOL's Cleveland District Office has 3 input files, the file names might be CL123456789_A, CL123456789_B, and CL123456789_C. (If there is only 1 input file, the file name would be CL123456789.)

The scenarios requiring additional calculations include:

A. Multiple primary cancers

If a claimant is diagnosed with more than one primary cancer, NIOSH will provide an input file for each primary cancer. NIOSH-IREP should be run with each of the input files. Enter the results from each run into the "Multiple Primary Cancers" calculator. The Multiple Primary Cancers calculator is accessible by clicking the button located at the bottom of the main input screen (Figure 10).

http://10.0.0.38/irep_niosh/inputs1.asp - Microsoft Internet Explorer

File Edit View Favorites Tools Help

Back Forward Stop Home Search Favorites Media Print Mail

Address http://10.0.0.38/irep_niosh/inputs1.asp

CDC Home CDC Search CDC Health Topics A-Z

CDC **Niosh** National Institute for Occupational Safety and Health

NIOSH Home NIOSH Search Site Index Contact Us

Interactive RadioEpidemiological Program NIOSH-IREP v.5.2

Personal Information		Exposure Information	
Claimant Name:	<input type="text" value="John Q. Doe"/>	Number of Exposures:	<input type="text" value="1"/>
NIOSH ID #:	<input type="text" value="123456"/>	Dose Input Information:	<input type="button" value="Enter Doses"/>
Claimant SSN:	<input type="text" value="123-45-6789"/>	Other Advanced Features:	<input type="button" value="Adv Features"/>
DOL District Office:	<input type="text" value="CL"/>	Use Data Input File:	<input type="button" value="Go to Upload Page"/>
Gender:	<input type="text" value="Male"/>	Calculate Probability of Causation:	<input type="button" value="Generate Results"/>
Birth Year:	<input type="text" value="1931"/>		
Year of Diagnosis:	<input type="text" value="1991"/>		
Claimant Cancer Diagnoses:	<input type="button" value="Enter Diagnoses"/>		
Cancer Model (ICD-9 code):	<input type="text" value="Oral Cavity and Pharynx (140-149)"/>		
Should alternate cancer model be run?:	<input type="text" value="No"/>		
Inputs for Skin and Lung Cancer Only:	<input type="button" value="Enter Data"/>		

About IREP View Model Details **Multiple Primary Cancers** Restart

Figure 10. Main Input Screen showing the "Multiple Primary Cancer" button

Multiple primary cancers (continued)

Follow the online instructions to estimate a claimant's total PC from two or more primary cancers (Figure 11).

http://10.0.0.38/irep_niosh/multiple_cancers.asp - Microsoft Internet Explorer

File Edit View Favorites Tools Help

Address http://10.0.0.38/irep_niosh/multiple_cancers.asp

CDC Home CDC Search CDC Health Topics A-Z

CDC **NIOSH** National Institute for Occupational Safety and Health
SAFER • HEALTHIER • PEOPLE

NIOSH Home NIOSH Search Site Index Contact Us

Interactive RadioEpidemiological Program NIOSH-IREP v.5.2

Probability of Causation (PC) for Multiple Primary Cancers
This page calculates the Total PC for claimants with multiple primary cancers. The following equation is used in accordance with 42 CFR Part 81. Guidelines for Determining the Probability of Causation Under the Energy Employees Occupational Illness Compensation Program Act of 2000. Final Rule. Department of Health and Human Services.

GENERAL EQUATION:

$$PC_{total} = 1 - [(1 - PC_1) \times (1 - PC_2) \times \dots \times (1 - PC_n)]$$

where,

- PC_{total} = total probability of causation
- PC_1 = probability of causation for the first primary cancer
- PC_2 = probability of causation for the second primary cancer
- PC_n = probability of causation for the n^{th} primary cancer

STEP 1: Use NIOSH-IREP to estimate the PC for each individual primary cancer.

STEP 2: Enter the number of primary cancers

STEP 3: Enter the PC estimate (99th percentile credibility limit) for each primary cancer.
[Note the number of entries should match "number of primary cancers" entered above.]

Cancer 1 PC <input type="text" value="40"/> %	Cancer 2 PC <input type="text" value="40"/> %	Cancer 3 PC <input type="text"/> %	Cancer 4 PC <input type="text"/> %
Cancer 5 PC <input type="text"/> %	Cancer 6 PC <input type="text"/> %	Cancer 7 PC <input type="text"/> %	Cancer 8 PC <input type="text"/> %
Cancer 9 PC <input type="text"/> %	Cancer 10 PC <input type="text"/> %	Cancer 11 PC <input type="text"/> %	Cancer 12 PC <input type="text"/> %

STEP 4: Click to calculate.

RESULT: Total PC = 64.00 %

STEP 5: Print this page and attach it to the summary reports for each primary cancer.

About NIOSH-IREP

If you have questions or comments, please contact [NIOSH](#)

Internet

Figure 11. Multiple Primary Cancer screen

4.0 TECHNICAL ASSISTANCE

Technical information about NIOSH-IREP may be obtained, and comments about NIOSH-IREP may be made, by contacting the NIOSH Office of Compensation Analysis and Support (OCAS) by e-mail at ocas@cdc.gov, or by mail at:

National Institute for Occupational Safety and Health
 Office of Compensation Analysis and Support
 4676 Columbia Pkwy, MS-R45
 Cincinnati, OH 45226

DOL staff requiring immediate technical assistance may call the OCAS office at (513) 841-4498.

5.0 INPUT FILE TEMPLATE

The input files produced by NIOSH are in Microsoft Excel format. These input files should not be modified by DOL. A screenshot of an example input file has been provided (Figure 12) for informational purposes.

PERSONAL INFORMATION									
1	Claimant Name	NIOSH ID #	Claimant SSI	DOL District Office	Gender	Birth Year	Year of Diagnosis	Cancer Model	Should alt model be run?
2	John Q. Doe	123456	123-45-6789	CL	Male	1931	1991	jal Cavity and Phary	No
CLAIMANT CANCER DIAGNOSES									
5	Primary Cancer #1	Primary Cancer #2	Primary Cancer #3	Secondary Cancer #1	Secondary Cancer #2	Secondary Cancer #3			
7	Cancer Type	N/A	N/A	N/A	N/A	N/A	N/A		
8	Date of Diagnosis	N/A	N/A	N/A	N/A	N/A	N/A		
EXPOSURE INFORMATION									
10	Number of exposures								
12	Exposure #	Exposure Year	Exposure Rate	Radiation Type	Dose Distribution Type	Parameter 1	Parameter 2	Parameter 3	
13	1	1971	chronic	electrons E:15keV	Lognormal	2.000	2.000	0.000	
14	2	1971	chronic	electrons E:15keV	Lognormal	2.000	2.000	0.000	
15	3	1971	chronic	electrons E:15keV	Lognormal	2.000	2.000	0.000	
16	4	1971	chronic	electrons E:15keV	Lognormal	2.000	2.000	0.000	
17	5	1971	chronic	electrons E:15keV	Lognormal	2.000	2.000	0.000	
18	6	1971	chronic	electrons E:15keV	Lognormal	2.000	2.000	0.000	
19	7	1971	chronic	electrons E:15keV	Lognormal	2.000	2.000	0.000	
20	8	1971	chronic	electrons E:15keV	Lognormal	2.000	2.000	0.000	
21	9	1971	chronic	electrons E:15keV	Lognormal	2.000	2.000	0.000	
22	10	1971	chronic	electrons E:15keV	Lognormal	2.000	2.000	0.000	
23	11	1971	chronic	electrons E:15keV	Lognormal	2.000	2.000	0.000	
24	12	1971	chronic	electrons E:15keV	Lognormal	2.000	2.000	0.000	
25	13	1971	chronic	electrons E:15keV	Lognormal	2.000	2.000	0.000	
26	14	1971	chronic	electrons E:15keV	Lognormal	2.000	2.000	0.000	
27	15	1971	chronic	electrons E:15keV	Lognormal	2.000	2.000	0.000	
28	16	1971	chronic	electrons E:15keV	Lognormal	2.000	2.000	0.000	
29	17	1971	chronic	electrons E:15keV	Lognormal	2.000	2.000	0.000	
30	18	1971	chronic	electrons E:15keV	Lognormal	2.000	2.000	0.000	
31	19	1971	chronic	electrons E:15keV	Lognormal	2.000	2.000	0.000	
32	20	1971	chronic	electrons E:15keV	Lognormal	2.000	2.000	0.000	
33	21	1971	chronic	electrons E:15keV	Lognormal	2.000	2.000	0.000	
34	22	1971	chronic	electrons E:15keV	Lognormal	2.000	2.000	0.000	
35	23	1971	chronic	electrons E:15keV	Lognormal	2.000	2.000	0.000	
36	24	1971	chronic	electrons E:15keV	Lognormal	2.000	2.000	0.000	
37	25	1971	chronic	electrons E:15keV	Lognormal	2.000	2.000	0.000	
38	26	1971	chronic	electrons E:15keV	Lognormal	2.000	2.000	0.000	
39	27	1971	chronic	electrons E:15keV	Lognormal	2.000	2.000	0.000	
40	28	1971	chronic	electrons E:15keV	Lognormal	2.000	2.000	0.000	
41	29	1971	chronic	electrons E:15keV	Lognormal	2.000	2.000	0.000	

Figure 12. Screenshot of an example input file

6.0 GLOSSARY¹

Absorbed dose: The energy deposited by *ionizing radiation* per unit mass of tissue irradiated. It can be expressed in units of *gray (Gy)* or *rad*, where 1 Gy = 100 rad.

Activity: The rate of transformation (or disintegration or decay) of a radioactive material. It can be expressed in units of *becquerel (Bq)* or *curie (Ci)*.

Acute dose: A *radiation dose* received by a person over a short period of time (less than one day.) A *dose* is also considered acute if it was delivered at a rate greater than 0.006 Gy per hour averaged over the first few hours.

Alpha particle: A particle emitted from a decay of certain heavy radionuclides. It has a short range and can be stopped by a sheet of paper or the outer dead layer of skin. Alpha particles constitute a health hazard only when alpha-emitting radionuclides are deposited in tissues following ingestion or inhalation.

Background radiation: Radiation emitted by natural sources such as cosmic radiation or radionuclides occurring naturally in soil, food, water or air.

Baseline cancer risk: The risk of cancer in the general population from causes other than exposure to the investigated agent (for example, the source of radiation.)

Becquerel (Bq): The unit of *activity* equal to one disintegration per second.

Beta particle: A particle emitted from a decay of certain radionuclides. It has a short range but can penetrate the dead layer of skin to produce a skin *dose*.

Carcinogen: Any substance or agent that can cause cancer.

Centi-sievert (cSv): An *equivalent dose* equal to 0.01 Sv or 1 rem.

¹ Words appearing in *italicized text* are also defined in the glossary.

Chronic dose: *Radiation dose* received by a person over a long period of time (more than one day.) A *dose* is also considered chronic if it was delivered at a rate lower than 0.006 Gy per hour for more than one day.

Cohort: A group of individuals sharing one or more characteristics.

Confidence interval (CI): A range of values around a mean, proportion, or rate that serves as an estimate of *uncertainty*. The upper and lower values of a confidence interval are called the confidence limits.

Confounder: A factor that distorts or masks the true effect of a given exposure in an epidemiologic study.

Covered employee: An individual who is or was an employee of DOE, a DOE contractor or subcontractor, or an atomic weapons employer.

Curie (Ci): A measure of the amount of *radioactivity* in a material. One curie is equal to 37 billion disintegrations per second.

Dose (or radiation dose): A general term representing either *absorbed dose* or *equivalent dose*.

Dose and dose-rate effectiveness factor (DDREF): A mathematical factor that takes into account that the response per unit *dose* at low *doses* and low *dose* rates may be different from the response per unit *dose* at high *doses* and high *dose* rates.

Dose reconstruction (DR): Research and analysis leading to a quantitative estimate of radiation exposure, particularly when radiation monitoring data are unavailable, incomplete, or unreliable.

Dose-response relationship: A relationship in which a change in the amount, intensity, or duration of an exposure is associated with either an increase or decrease in risk of a specified health outcome.

EEOICPA: The Energy Employees Occupational Illness Compensation Program Act of 2000, Public Law 106-398, as amended.

Electron volt (eV): The customary unit of energy for all *ionizing radiations*.

Epidemiology: The study of factors that affect health and disease in populations.

Equivalent dose: A measure of biological damage caused by exposure to radiation, expressed in units of *rem* or *sievert (Sv)*, where 1 Sv = 100 *rem*.

Erg: A unit for measuring energy.

Excess relative risk (ERR): The risk due to exposure to radiation in excess of the baseline risk, divided by the baseline risk. ERR is the same as the *relative risk (RR)* minus one.

External dose: The *dose* from radiation sources located outside the body.

Gamma rays (or gamma radiation): Electromagnetic radiation emitted from a decay of certain radionuclides. It can be very penetrating, producing a *radiation dose* throughout the whole body.

Gray (Gy): The special name for the *SI* unit of *absorbed dose*. 1 Gy = 100 *rad*.

Health physics: The science of radiation protection to reduce or prevent radiation exposure. Health physicists at OCAS specialize in quantifying past radiation exposures (i.e., *dose reconstruction*) in order to evaluate their health effects.

Healthy worker effect: A phenomenon in which fewer deaths or reportable illnesses (cancers, for example) are observed among workers in a given industry compared with the general population, even though the workers under study may be more exposed to hazardous substances (*ionizing radiation*, for example) than the general population. This counterintuitive effect is often attributed, in part, to the fact that chronically ill or disabled persons are less likely to be employed than "healthy" persons. Thus, a *cohort* of workers – absent that less robust segment of the population – may be more resistant to disease than the population as a whole.

Internal dose: The *dose* from radioactive materials that have been absorbed, ingested, or inhaled into the body.

Inverse dose-rate effect: A phenomenon in which a given *dose* delivered chronically or in multiple fractions results in a greater biological response than the same *dose* delivered acutely.

Ionizing radiation: Particles or rays emitted from radioactive materials. If ionization is produced in a cell, the ions may damage the cell and the affected cells may become cancerous.

Milli-sievert (mSv): An *equivalent dose* equal to 0.001 *sievert (Sv)*.

Missed dose: A *radiation dose* that was received by an individual, but that was not detected by monitory methods nor recorded.

Monte Carlo simulation: A computerized method for estimating the statistical *uncertainty* of a *risk model*. Repeated samples are taken from special probability distribution functions and the *probability of causation (PC)* is calculated for each set of samples. The upper 99th percentile of the distribution of estimated PC values (*upper 99 percent credibility limit*) is used to determine eligibility for compensation under *EEOICPA*.

Neutron: An uncharged particle of radiation produced from certain nuclear reactions. It can be very penetrating, producing a *radiation dose* throughout the whole body.

NIOSH: The National Institute for Occupational Safety and Health, part of the Centers for Disease Control and Prevention, United States Department of Health and Human Services.

Non-radiogenic cancer: A type of cancer that the Department of Health and Human Services has found not to be related to radiation.

OCAS: The Office of Compensation Analysis and Support, an Office of *NIOSH* located in Cincinnati and created to fulfill *NIOSH's* responsibilities under *EEOICPA*.

Odds ratio (OR): The ratio of the odds of disease among the exposed compared with the odds of disease among the unexposed. Under certain conditions, the odds ratio may be used as an estimate of the *relative risk*.

Organ dose: A general term representing either *absorbed dose* or *equivalent dose* received by a particular organ or tissue.

Photon: Electromagnetic radiation emitted from one of several possible sources. Photons originating from radioactive decay are called gammas or *gamma rays*.

Primary cancer: A cancer defined by the original organ site at which the cancer occurred, prior to any spread (metastasis) to other sites in the body.

Probability of causation (PC): The probability or likelihood that a cancer was caused by radiation exposure incurred by a *covered employee* while in the performance of duty. A PC of 50% or greater means that the claimant's cancer was, as least as likely as not, induced by occupational radiation exposure.

Rad: A unit of *absorbed dose*. 100 rad equals one *gray* (1 Gy).

Radiation dose: See *dose*.

Radiation effectiveness factor (REF): A mathematical factor, similar to *relative biological effectiveness (RBE)*, used to account for the fact that different types of radiation are more effective at producing an outcome (such as cancer) than others.

Radioactivity: The process or characteristic of an unstable atomic nucleus to spontaneously transform with the emission of energy in the form of radiation, such as *alpha particles*, *beta particles*, and *photons*. The term may also refer to radioactive materials.

Radioepidemiological Tables: Tables that allow computation of the *probability of causation (PC)* for various cancers associated with a defined exposure to radiation, after accounting for factors such as gender, age at exposure, age at diagnosis, and *time since exposure (TSE)*.

Radon: A radioactive noble-gas element. Radon constitutes a health hazard, primarily to the lungs, when it is released into the air and its decay products are inhaled.

Random seed number: The first number selected in a sequence of random numbers. A given seed value will produce the same sequence of random numbers every time a *Monte Carlo simulation* is run in NIOSH-IREP using the same *simulation sample size*.

Relative biological effectiveness (RBE): A mathematical factor used to account for the fact that different types of radiation are more effective at producing an outcome (such as cancer) than others.

Relative risk (RR): The ratio of disease incidence (or mortality) in an exposed population to that in an unexposed population. A relative risk of "1" means there is no association between exposure and disease.

Rem: A unit of measure for expressing *equivalent dose*. One rem is equal to 1 *centisievert (cSv)* or 0.01 *sievert (Sv)*.

Risk coefficient: A general term referring to the coefficient of the *dose-response relationship*. In particular, if the dose-response is linear, the risk coefficient is the slope of the dose-response, and it represents the risk of cancer per unit *dose* received by the exposed individual.

Risk model: A mathematical model based on the *dose-response relationship* determined for a given cancer type, used to estimate the *probability of causation (PC)* using information on *radiation dose* and personal data.

SEC: Special Exposure *Cohort*.

Secondary cancer: A cancer that has spread (metastasized) from its site of origin (the primary site) to another part of the body.

SI: The International System of Units

Sievert (Sv): A unit of measure for expressing *equivalent dose*. One sievert (1 Sv) is equal to 100 *rem*.

Simulation sample size: The number of *Monte Carlo simulations* used in each NIOSH-IREP run. The default simulation sample size in NIOSH-IREP is 2000.

Threshold dose: Radiation dose below which there is no measurable biological effect.

Time since exposure (TSE): The number of years between radiation exposure and diagnosis of cancer.

Uncertainty: A term used to describe the lack of precision and accuracy of a given estimate, the extent of which depends upon the amount and quality of the evidence or data available.

Uncertainty distribution: A range of discrete or continuous values arrayed to encompass, with high confidence, the true but unknown values of a given quantity or parameter.

Upper 99 percent credibility limit: The 99th percentile of the range of values in an *uncertainty distribution*. The *uncertainty distribution* of the *probability of causation (PC)* is first estimated, and the upper 99th percentile of this distribution is compared to the decision criterion (a PC of 50%) to determine eligibility for compensation.

Working Level: A unit of measure describing the level of exposure to radioactive *radon*.

Working Level Month (WLM): A unit of measure describing a cumulative exposure to one *working level* of *radon* for one working month (170 hours.)

X rays: A type of electromagnetic radiation (*photon*) similar to *gamma radiation* but generally less energetic.

7.0 DESCRIPTION OF EXAMPLE INPUT FILES

The input files included on the floppy disk located inside the back cover of this user's guide have been provided to aid Department of Labor (DOL) staff in learning to use NIOSH-IREP. A description of each file is included below. *The simulation sample size has been set to 2,000 and the random seed value has been set to 99 for all example input files.*

Example 1 is included to illustrate how PC is affected by the claimant's age at the time of exposure.

Example 1a

Filename: Example1a.xls
Gender: Female
Age at exposure: 20
Age at diagnosis: 50
Cancer type: Liver
No. of exposures: 1
Exposure rate: chronic
Radiation type: high-energy gamma rays (photons; E=30-250 keV)
Dose: 10 cSv (constant)

Example 1a solution

Percentile	Probability of Causation (%)
1 st	1.76
5 th	3.15
50 th	14.16
95 th	41.20
99 th	53.21

Example 1b

Filename: Example1b.xls
Gender: Female
Age at exposure: 40
Age at diagnosis: 50
Cancer type: Liver
No. of exposures: 1
Exposure rate: chronic
Radiation type: high-energy gamma rays (photons; E=30-250 keV)
Dose: 10 cSv (constant)

Example 1b solution

Percentile	Probability of Causation (%)
1 st	0.99
5 th	1.75
50 th	8.34
95 th	28.02
99 th	39.51

Example 2 is included to illustrate how PC is affected by smoking history.

Example 2a

Filename: Example2a.xls
Gender: Male
Age at exposure: 20
Age at diagnosis: 50
Cancer type: Lung
Smoking history: Never smoked
No. of exposures: 1
Exposure rate: chronic
Radiation type: high-energy gamma rays (photons; E=30-250 keV)
Dose: Lognormal (geometric mean=15 cSv; geometric sd=2.0)

Example 2a solution

Percentile	Probability of Causation (%)
1 st	0.66
5 th	1.36
50 th	9.15
95 th	40.42
99 th	57.34

Example 2b

Filename: Example2b.xls
Gender: Male
Age at exposure: 20
Age at diagnosis: 50
Cancer type: Lung
Smoking history: Smoker (20-39 cigarettes/day)
No. of exposures: 1
Exposure rate: chronic
Radiation type: high-energy gamma rays (photons; E=30-250 keV)
Dose: Lognormal (geometric mean=15 cSv; geometric sd=2.0)

Example 2b solution

Percentile	Probability of Causation (%)
1 st	0.22
5 th	0.68
50 th	4.06
95 th	19.21
99 th	30.64

Example 3 is included to show how multiple exposures are handled in NIOSH-IREP.

Example 3

Filename: Example3.xls
Gender: Male
Age at exposure: 25, 26, 27, 28, 29
Age at diagnosis: 60
Cancer type: Colon
No. of exposures: 5
Exposure rate: chronic
Radiation type: high-energy gamma rays (photons; E>250 keV)
Dose: Lognormal (geometric mean=5 cSv, geometric sd=1.7)

Example 3 solution

Percentile	Probability of Causation (%)
1 st	0.98
5 th	3.12
50 th	14.19
95 th	41.15
99 th	56.78

Example 4 demonstrates a calculation for a claimant with 3 radon and 3 other radiation exposures.

Example 4

Filename: Example4.xls
Gender: Male
Age at exposure: 20, 21, 22
Age at diagnosis: 50
Cancer type: Lung
Smoking history: Never smoked
No. of exposures: 3
Exposure rate: chronic
Radiation type: high-energy gamma rays (photons; E>250 keV)
Dose: Triangular (min=2, mode=4, max=8)
Radon exposure: Lognormal (geometric mean=0.4 WLM, geometric sd=2)

Example 4 solution

Percentile	Probability of Causation (%)
1 st	3.38
5 th	5.61
50 th	14.79
95 th	38.62
99 th	53.63