



associated with



ALIANZA POR LA
MINERÍA RESPONSABLE

Pre-situational and Applied Political Economy Analysis (PSAPEA)

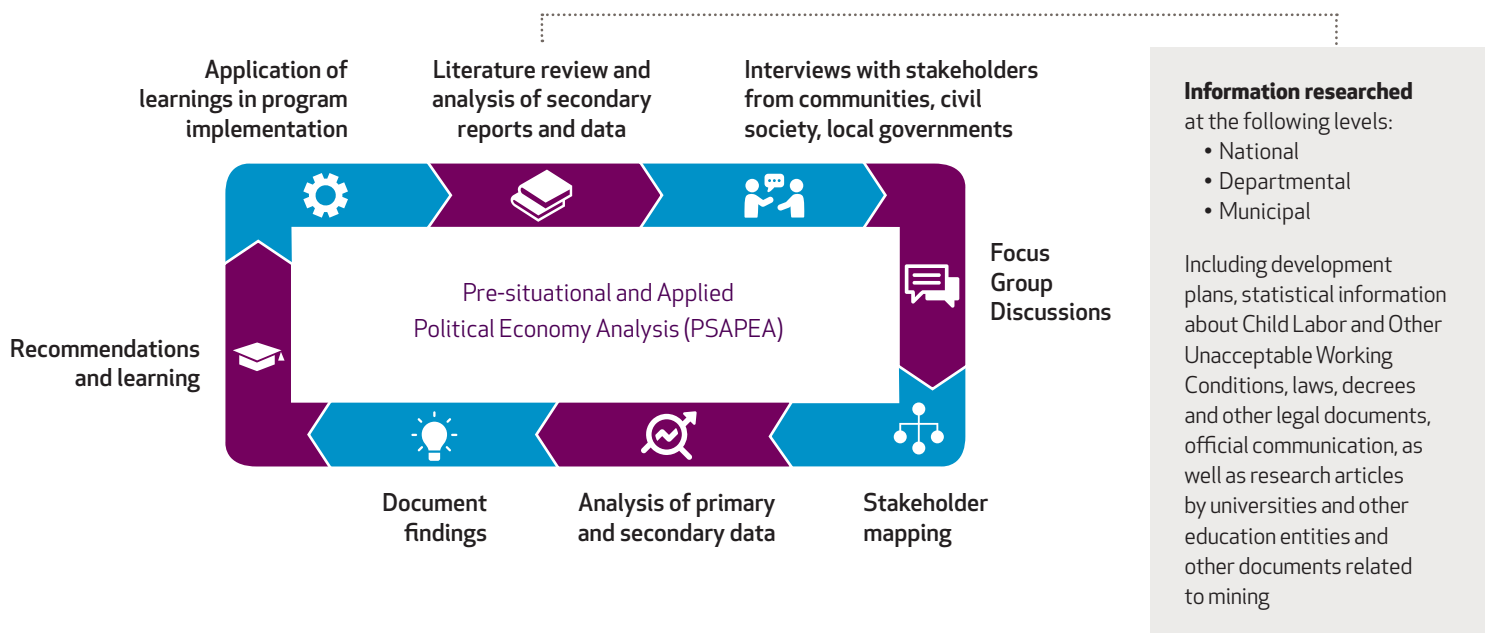
What is Pilares?

The Pilares project works to improve the capacity of civil society to better understand and address child labor and promote acceptable conditions of work in the artisanal and small-scale gold mining (ASGM) sector in Zaragoza and El Bagre of Bajo Cauca, Antioquia, and Barranco de Loba and San Martin de Loba of Sur de Bolivar, Colombia.

Purpose of the PSAPEA

To develop a comprehensive understanding of the civil society landscape in the target municipalities, Pact conducted a desktop and field research exercise to: contextualize the issues of child labor and violations of workplace conditions in ASGM; identify and map local and regional civil society actors; understand the social, economic and political contexts within which these organizations operate; assess the incentive structure and current capacities of civil society actors; identify key stakeholders to consult, engage and/or keep informed during the project's implementation.

Methodology





Findings...

CAUSES OF CHILD LABOR

- Poverty and lack of economic opportunities
- Comfort with the same lifestyle
- Relatively easy income for adolescents
- Lack of awareness of adverse effects of child labor
- Limited attention to children's use of time in light of parents' work in mining
- Lack of alternatives to child labor (i.e. apprenticeships, after-school programs)
- Lack of other cultural and sports activities

POTENTIAL CONSEQUENCES OF ASGM

- Irreparable environmental damage
- Health problems such as mercury poisoning
- Accidents and preventable death
- Safety risks resulting from lack of safety measures
- Insecurity and competition for scarce resources
- Vulnerability to extortion and other actions from illegal armed groups
- Lack of trust towards authorities and government entities

ADDITIONAL FACTORS IDENTIFIED

- Consumption of psychoactive substances and/or alcohol
- Sexual exploitation of adolescents
- School dropout
- Teenage pregnancy
- Intra-family violence
- Recruitment of children and adolescents into illegal armed groups

LIMITATIONS OF THE STUDY:

- *Limited engagement by and support from two out of four municipal governments*
- *Remote location of some stakeholders resulting in logistical challenges*
- *Limited availability or willingness by some civil society actors to participate in study*
- *Limited availability or willingness by some regional and national government representatives to participate in study*



Recommendations...

1. Motivate participation of civil society (CS) in collective networks for expanded reach and coordination
2. Encourage collaboration between the Colombian Institute for Family Well Being, the Family Commissioner's offices, and CS organizations
3. Respect local customs on engaging indigenous and afro-descendant groups
4. Highlight communities' historical memory
5. Remain sensitive to dynamics and operational contexts of civil society actors
6. Promote the formation of associations between the informal miners
7. Develop a process to raise awareness about the forms and consequences of Child Labor (CL) and other unacceptable working conditions (OUWC)
8. Raise awareness among the communities about effects of CL and OUWC
9. Integrate cultural and sports activities into all aspects of the Pilares strategy
10. Raise awareness among miners and industry associations about the advances of addressing CL and OUWC
11. Create spaces for dialogue between civil society and current/incoming local and regional governments
12. Identify mechanisms that encourage the disengagement of minors from the mining industry
13. Ensure a Do No Harm approach
14. Involve leaders of the More Families in Action (Más familias en acción - MFA) program
15. Promote evidence-based engagement between civil society actors and government
16. Expand project's audience beyond mining sector

For a full report, please contact: pactcolombia@pactworld.org or phone +57 (4) 3220893



UNITED STATES DEPARTMENT OF LABOR

This material does not necessarily reflect the views or policies of the United States Department of Labor, nor does the mention of trade names, commercial products, or organizations imply endorsement by the United States Government.

