



News Release

Connect with DOL at <https://blog.dol.gov>



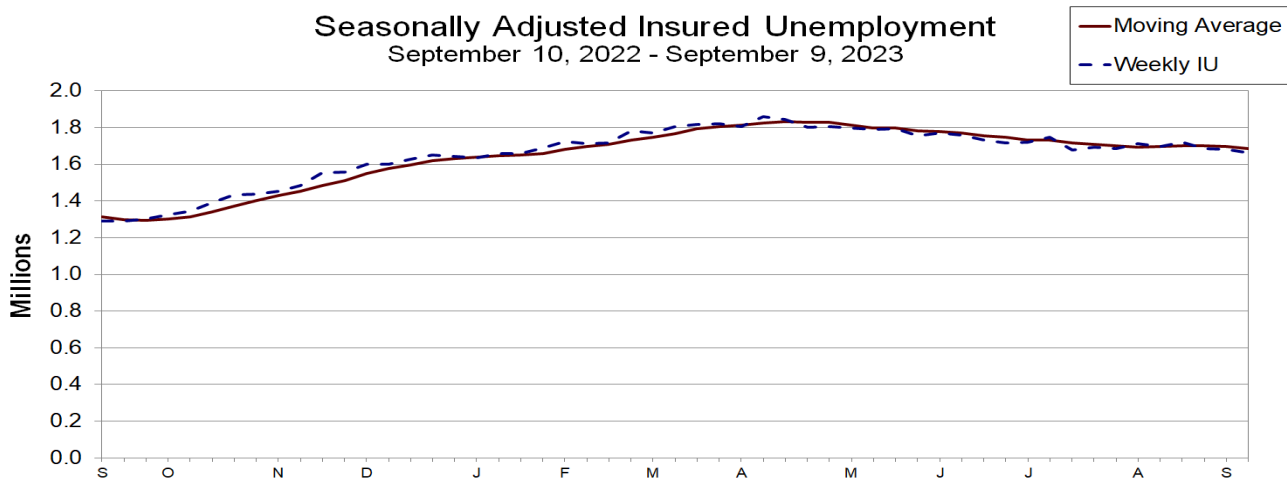
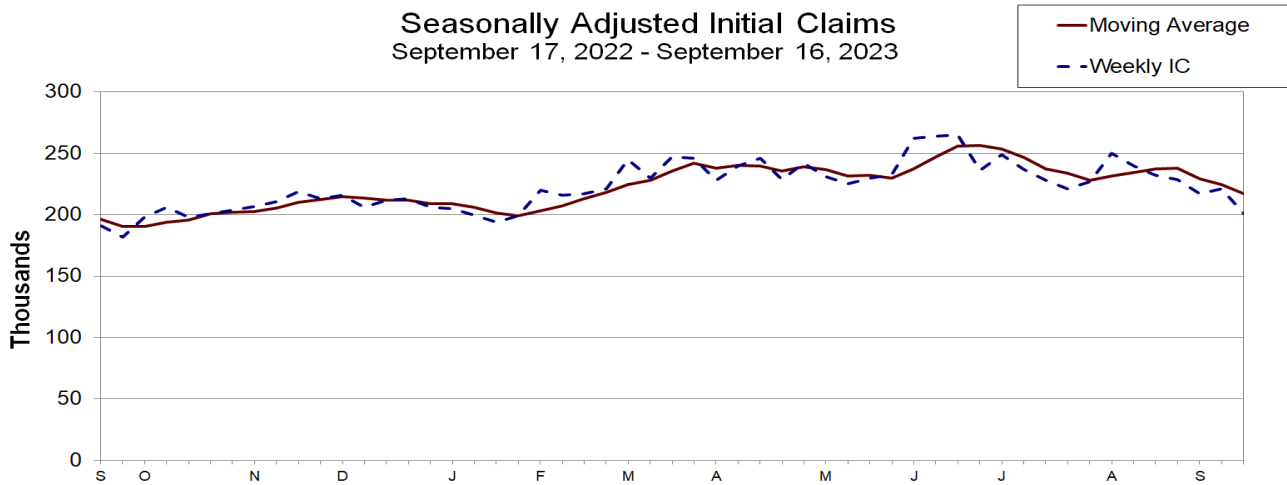
TRANSMISSION OF MATERIALS IN THIS RELEASE IS EMBARGOED UNTIL
8:30 A.M. (Eastern) Thursday, September 21, 2023

UNEMPLOYMENT INSURANCE WEEKLY CLAIMS

SEASONALLY ADJUSTED DATA

In the week ending September 16, the advance figure for seasonally adjusted **initial claims** was 201,000, a decrease of 20,000 from the previous week's revised level. The previous week's level was revised up by 1,000 from 220,000 to 221,000. The 4-week moving average was 217,000, a decrease of 7,750 from the previous week's revised average. The previous week's average was revised up by 250 from 224,500 to 224,750.

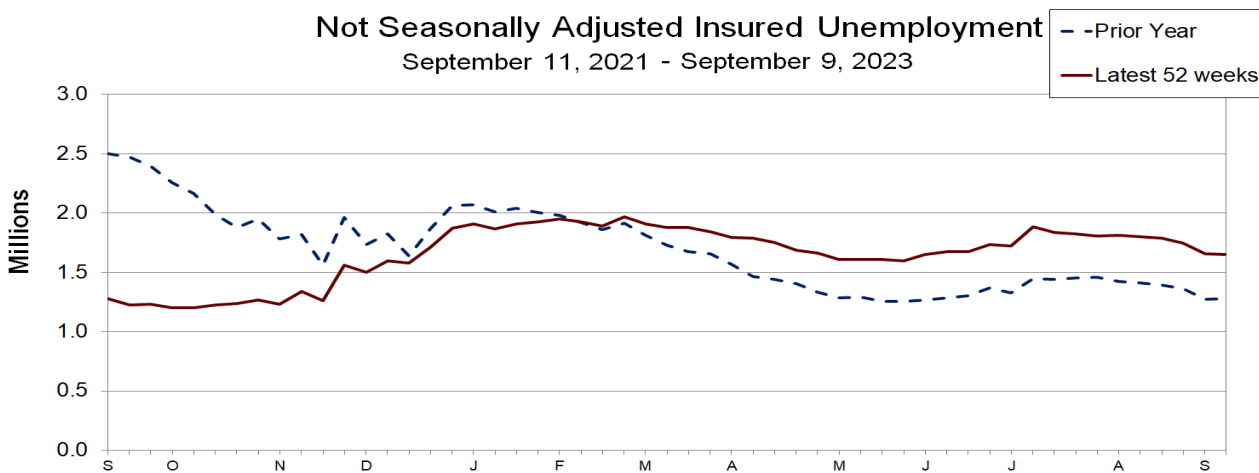
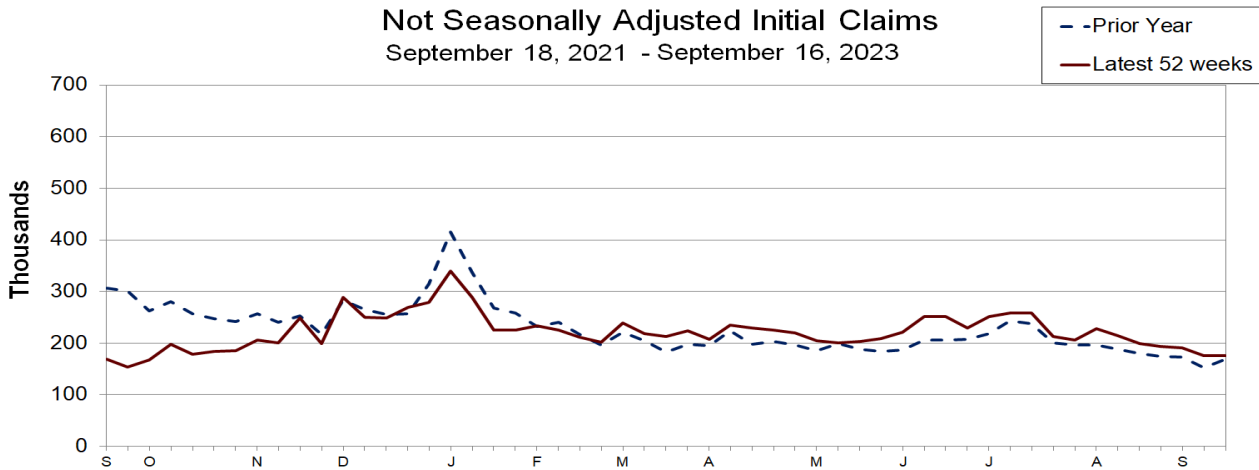
The advance seasonally adjusted **insured unemployment rate** was 1.1 percent for the week ending September 9, unchanged from the previous week's unrevised rate. The advance number for seasonally adjusted **insured unemployment** during the week ending September 9 was 1,662,000, a decrease of 21,000 from the previous week's revised level. The previous week's level was revised down by 5,000 from 1,688,000 to 1,683,000. The 4-week moving average was 1,687,000, a decrease of 8,750 from the previous week's revised average. The previous week's average was revised down by 1,250 from 1,697,000 to 1,695,750.



UNADJUSTED DATA

The advance number of actual initial claims under state programs, unadjusted, totaled 175,661 in the week ending September 16, an increase of 67 (or 0.04 percent) from the previous week. The seasonal factors had expected an increase of 17,936 (or 10.2 percent) from the previous week. There were 168,701 initial claims in the comparable week in 2022.

The advance unadjusted insured unemployment rate was 1.1 percent during the week ending September 9, unchanged from the prior week. The advance unadjusted level of insured unemployment in state programs totaled 1,650,763, a decrease of 5,087 (or -0.3 percent) from the preceding week. The seasonal factors had expected an increase of 15,145 (or 0.9 percent) from the previous week. A year earlier the rate was 0.9 percent and the volume was 1,278,853.



The total number of continued weeks claimed for benefits in all programs for the week ending September 2 was 1,678,881, a decrease of 93,267 from the previous week. There were 1,295,610 weekly claims filed for benefits in all programs in the comparable week in 2022.

No state was triggered "on" the Extended Benefits program during the week ending September 2.

Initial claims for UI benefits filed by former Federal civilian employees totaled 272 in the week ending September 9, a decrease of 42 from the prior week. There were 319 initial claims filed by newly discharged veterans, a decrease of 35 from the preceding week.

There were 4,164 continued weeks claimed filed by former Federal civilian employees the week ending September 2, a decrease of 388 from the previous week. Newly discharged veterans claiming benefits totaled 3,881, a decrease of 56 from the prior week.

The highest insured unemployment rates in the week ending September 2 were in New Jersey (2.5), Hawaii (2.3), California (2.0), New York (1.9), Puerto Rico (1.9), Rhode Island (1.8), Massachusetts (1.7), Oregon (1.6), and Pennsylvania (1.5).

The largest increases in initial claims for the week ending September 9 were in Indiana (+2,627), Florida (+783), Kentucky (+308), Nebraska (+273), and Iowa (+162), while the largest decreases were in Ohio (-3,425), Missouri (-3,196), New York (-3,051), California (-1,880), and Texas (-1,393).

UNEMPLOYMENT INSURANCE DATA FOR REGULAR STATE PROGRAMS

WEEK ENDING	September 16	September 9	Change	September 2	Prior Year¹
Initial Claims (SA)	201,000	221,000	-20,000	217,000	191,000
Initial Claims (NSA)	175,661	175,594	+67	191,353	168,701
4-Wk Moving Average (SA)	217,000	224,750	-7,750	229,500	196,500

WEEK ENDING	September 9	September 2	Change	August 26	Prior Year¹
Insured Unemployment (SA)	1,662,000	1,683,000	-21,000	1,684,000	1,289,000
Insured Unemployment (NSA)	1,650,763	1,655,850	-5,087	1,747,733	1,278,853
4-Wk Moving Average (SA)	1,687,000	1,695,750	-8,750	1,702,750	1,312,500
Insured Unemployment Rate (SA) ²	1.1%	1.1%	0.0	1.1%	0.9%
Insured Unemployment Rate (NSA) ²	1.1%	1.1%	0.0	1.2%	0.9%

INITIAL CLAIMS FILED IN FEDERAL PROGRAMS (UNADJUSTED)

WEEK ENDING	September 9	September 2	Change	Prior Year¹
Federal Employees (UCFE)	272	314	-42	310
Newly Discharged Veterans (UCX)	319	354	-35	368

CONTINUED WEEKS CLAIMED FILED FOR UI BENEFITS IN ALL PROGRAMS (UNADJUSTED)

WEEK ENDING	September 2	August 26	Change	Prior Year¹
Regular State	1,650,961	1,742,542	-91,581	1,269,824
Federal Employees	4,164	4,552	-388	6,117
Newly Discharged Veterans	3,881	3,937	-56	4,075
Extended Benefits ³	377	522	-145	3,237
State Additional Benefits ⁴	1,942	1,854	+88	1,569
STC / Workshare ⁵	17,556	18,741	-1,185	10,788
TOTAL	1,678,881	1,772,148	-93,267	1,295,610

FOOTNOTES

SA - Seasonally Adjusted Data, NSA - Not Seasonally Adjusted Data Continued weeks claimed represent all weeks of benefits claimed during the week being reported, and do not represent weeks claimed by unique individuals.

1. Prior year is comparable to most recent data.
2. Most recent week used covered employment of 148,060,578 as denominator.
3. Information on the EB program can be found here: [EB Program information](#)
4. Some states maintain additional benefit programs for those claimants who exhaust regular benefits, and when applicable, extended benefits. Information on states that participate, and the extent of benefits paid, can be found starting on page 4-5 of this link: [Extensions and Special Programs PDF](#)
5. Information on STC/Worksharing can be found starting on page 4-11 of the following link: [Extensions and Special Programs PDF](#)

Advance State Claims - Not Seasonally Adjusted

STATE	Initial Claims Filed During Week Ended September 16			Insured Unemployment For Week Ended September 9		
	Advance	Prior Wk	Change	Advance	Prior Wk	Change
Alabama	1,938	2,118	-180	8,251	9,160	-909
Alaska	774	524	250	3,272	3,136	136
Arizona	3,221	3,034	187	26,335	28,869	-2,534
Arkansas	1,136	1,325	-189	8,932	9,634	-702
California	35,364	36,538	-1,174	387,063	360,407	26,656
Colorado	2,479	2,276	203	22,830	21,504	1,326
Connecticut	2,767	2,789	-22	22,290	22,788	-498
Delaware	269	237	32	4,388	4,423	-35
District of Columbia	396	373	23	5,195	5,548	-353
Florida	5,702	5,595	107	37,845	41,470	-3,625
Georgia	6,113	4,756	1,357	32,562	32,937	-375
Hawaii	2,236	2,422	-186	14,753	13,604	1,149
Idaho	729	835	-106	3,850	4,051	-201
Illinois	8,089	7,653	436	80,894	81,341	-447
Indiana	3,198	5,923	-2,725	23,450	23,196	254
Iowa	1,558	2,008	-450	7,622	6,917	705
Kansas	1,081	935	146	4,569	4,446	123
Kentucky	1,228	1,597	-369	6,438	6,363	75
Louisiana	1,486	1,384	102	11,746	13,116	-1,370
Maine	356	360	-4	3,643	3,621	22
Maryland	1,791	1,900	-109	20,439	20,049	390
Massachusetts	2,113	2,225	-112	57,114	61,070	-3,956
Michigan	4,250	4,454	-204	33,858	36,698	-2,840
Minnesota	2,912	2,836	76	34,114	40,300	-6,186
Mississippi	843	796	47	5,755	6,493	-738
Missouri	2,451	2,683	-232	16,136	17,908	-1,772
Montana	438	411	27	2,901	2,924	-23
Nebraska	596	832	-236	3,926	3,747	179
Nevada	2,010	2,162	-152	20,459	20,899	-440
New Hampshire	269	314	-45	2,384	2,697	-313
New Jersey	7,533	7,445	88	94,898	100,736	-5,838
New Mexico	708	598	110	9,525	9,491	34
New York	13,349	11,891	1,458	161,734	170,499	-8,765
North Carolina	2,966	2,997	-31	19,723	20,552	-829
North Dakota	168	147	21	1,219	1,138	81
Ohio	7,053	7,191	-138	34,308	35,215	-907
Oklahoma	1,001	1,191	-190	9,157	9,530	-373
Oregon	4,006	3,464	542	29,523	30,128	-605
Pennsylvania	8,941	8,850	91	81,166	84,178	-3,012
Puerto Rico	1,444	1,436	8	16,285	16,933	-648
Rhode Island	799	491	308	7,616	8,567	-951
South Carolina	2,730	1,714	1,016	13,891	13,423	468
South Dakota	108	129	-21	775	715	60
Tennessee	2,161	2,157	4	14,960	15,340	-380
Texas	13,309	12,465	844	136,599	128,598	8,001
Utah	1,355	1,296	59	9,551	9,719	-168
Vermont	177	152	25	1,981	2,020	-39
Virgin Islands	53	82	-29	250	302	-52
Virginia	1,480	2,118	-638	14,302	13,027	1,275
Washington	4,883	4,663	220	53,997	49,741	4,256
West Virginia	589	567	22	6,375	5,863	512
Wisconsin	2,843	3,060	-217	18,589	19,649	-1,060
Wyoming	212	195	17	1,325	1,170	155
US Total	175,661	175,594	67	1,650,763	1,655,850	-5,087

Note: Advance claims are not directly comparable to claims reported in prior weeks. Advance claims are reported by the state liable for paying the unemployment compensation, whereas previous weeks reported claims reflect claimants by state of residence. In addition, claims reported as "workshare equivalent" in the previous week are added to the advance claims as a proxy for the current week's "workshare equivalent" activity.

Seasonally Adjusted US Weekly UI Claims (in thousands)

Week Ending	Initial Claims	Change from		Insured Unemployment	Change from		IUR
		Prior Week	4-Week Average		Prior Week	4-Week Average	
September 10, 2022	192	-5	200.75	1,289	-13	1,312.50	0.9
September 17, 2022	191	-1	196.50	1,290	1	1,299.25	0.9
September 24, 2022	182	-9	190.50	1,302	12	1,295.75	0.9
October 1, 2022	198	16	190.75	1,325	23	1,301.50	0.9
October 8, 2022	206	8	194.25	1,346	21	1,315.75	0.9
October 15, 2022	198	-8	196.00	1,391	45	1,341.00	1.0
October 22, 2022	201	3	200.75	1,432	41	1,373.50	1.0
October 29, 2022	204	3	202.25	1,439	7	1,402.00	1.0
November 5, 2022	207	3	202.50	1,454	15	1,429.00	1.0
November 12, 2022	211	4	205.75	1,484	30	1,452.25	1.0
November 19, 2022	219	8	210.25	1,554	70	1,482.75	1.1
November 26, 2022	213	-6	212.50	1,558	4	1,512.50	1.1
December 3, 2022	216	3	214.75	1,601	43	1,549.25	1.1
December 10, 2022	206	-10	213.50	1,601	0	1,578.50	1.1
December 17, 2022	212	6	211.75	1,627	26	1,596.75	1.1
December 24, 2022	213	1	211.75	1,650	23	1,619.75	1.1
December 31, 2022	206	-7	209.25	1,645	-5	1,630.75	1.1
January 7, 2023	205	-1	209.00	1,634	-11	1,639.00	1.1
January 14, 2023	200	-5	206.00	1,658	24	1,646.75	1.1
January 21, 2023	194	-6	201.25	1,660	2	1,649.25	1.1
January 28, 2023	199	5	199.50	1,688	28	1,660.00	1.2
February 4, 2023	220	21	203.25	1,723	35	1,682.25	1.2
February 11, 2023	216	-4	207.25	1,714	-9	1,696.25	1.2
February 18, 2023	217	1	213.00	1,718	4	1,710.75	1.2
February 25, 2023	221	4	218.50	1,781	63	1,734.00	1.2
March 4, 2023	245	24	224.75	1,772	-9	1,746.25	1.2
March 11, 2023	230	-15	228.25	1,804	32	1,768.75	1.2
March 18, 2023	247	17	235.75	1,817	13	1,793.50	1.3
March 25, 2023	246	-1	242.00	1,823	6	1,804.00	1.3
April 1, 2023	228	-18	237.75	1,804	-19	1,812.00	1.2
April 8, 2023	240	12	240.25	1,861	57	1,826.25	1.3
April 15, 2023	246	6	240.00	1,843	-18	1,832.75	1.3
April 22, 2023	229	-17	235.75	1,801	-42	1,827.25	1.2
April 29, 2023	242	13	239.25	1,807	6	1,828.00	1.2
May 6, 2023	231	-11	237.00	1,799	-8	1,812.50	1.2
May 13, 2023	225	-6	231.75	1,789	-10	1,799.00	1.2
May 20, 2023	230	5	232.00	1,794	5	1,797.25	1.2
May 27, 2023	233	3	229.75	1,755	-39	1,784.25	1.2
June 3, 2023	262	29	237.50	1,772	17	1,777.50	1.2
June 10, 2023	264	2	247.25	1,761	-11	1,770.50	1.2
June 17, 2023	265	1	256.00	1,733	-28	1,755.25	1.2
June 24, 2023	236	-29	256.75	1,718	-15	1,746.00	1.2
July 1, 2023	249	13	253.50	1,721	3	1,733.25	1.2
July 8, 2023	237	-12	246.75	1,749	28	1,730.25	1.2
July 15, 2023	228	-9	237.50	1,679	-70	1,716.75	1.1
July 22, 2023	221	-7	233.75	1,692	13	1,710.25	1.1
July 29, 2023	227	6	228.25	1,684	-8	1,701.00	1.1
August 5, 2023	250	23	231.50	1,711	27	1,691.50	1.2
August 12, 2023	240	-10	234.50	1,697	-14	1,696.00	1.1
August 19, 2023	232	-8	237.25	1,719	22	1,702.75	1.2
August 26, 2023	229	-3	237.75	1,684	-35	1,702.75	1.1
September 2, 2023	217	-12	229.50	1,683	-1	1,695.75	1.1
September 9, 2023	221	4	224.75	1,662	-21	1,687.00	1.1
September 16, 2023	201	-20	217.00				

INITIAL CLAIMS FILED DURING WEEK ENDED
SEPTEMBER 9

INSURED UNEMPLOYMENT FOR WEEK ENDED
SEPTEMBER 2

STATE NAME	CHANGE FROM					CHANGE FROM					ALL PROGRAMS EXCLUDING RAILROAD RETIREMENT	
	STATE	LAST WEEK	YEAR AGO	UCFE ¹	UCX ¹	STATE (%) ²	LAST WEEK	YEAR AGO	UCFE ¹	UCX ¹		
Alabama	2,118	-52	116	4	7	9,160	0.5	-490	4,868	26	18	9,204
Alaska	524	-38	-59	3	2	3,136	1.0	41	-178	30	6	3,172
Arizona	3,034	-343	502	4	0	28,869	0.9	-932	6,478	38	30	28,937
Arkansas	1,325	21	-247	2	2	9,634	0.8	-278	2,579	5	17	9,656
California	36,538	-1,880	3,044	66	54	360,407	2.0	-22,921	77,813	613	803	361,823
Colorado	2,276	-109	376	0	2	21,504	0.8	-47	5,577	48	84	21,636
Connecticut	2,789	-510	190	0	2	22,788	1.4	-7,995	4,049	24	17	22,829
Delaware	237	-36	43	1	0	4,423	1.0	-580	1,414	8	8	4,439
District of Columbia	373	-28	130	6	0	5,548	1.0	-612	1,940	139	27	5,714
Florida	5,595	783	380	10	26	41,470	0.5	754	4,250	100	107	41,677
Georgia	4,756	-85	690	10	11	32,937	0.7	138	2,031	154	85	33,176
Hawaii	2,422	-1,094	1,388	3	8	13,604	2.3	210	7,942	30	61	13,695
Idaho	835	88	204	2	0	4,051	0.5	-105	996	6	7	4,064
Illinois	7,653	132	1,351	5	2	81,341	1.4	-3,775	24,986	276	83	81,700
Indiana	5,923	2,627	1,252	3	1	23,196	0.8	3,801	79	54	15	23,265
Iowa	2,008	162	802	5	2	6,917	0.5	-44	1,407	10	6	6,933
Kansas	935	-32	-73	0	0	4,446	0.3	-102	683	20	13	4,479
Kentucky	1,597	308	194	1	0	6,363	0.3	-451	-2,705	17	37	6,417
Louisiana	1,384	-39	-105	0	1	13,116	0.7	-541	2,123	30	9	13,155
Maine	360	-20	22	0	1	3,621	0.6	-249	913	14	10	3,645
Maryland	1,900	-234	272	7	13	20,049	0.8	-2,911	2,868	111	67	20,227
Massachusetts	2,225	-339	1,140	1	5	61,070	1.7	-7,104	15,639	73	68	61,211
Michigan	4,454	42	414	0	2	36,698	0.9	-193	6,807	63	49	36,810
Minnesota	2,836	-128	588	1	1	40,300	1.4	-4,799	18,313	32	46	40,378
Mississippi	796	-178	84	1	0	6,493	0.6	-333	1,525	49	10	6,552
Missouri	2,683	-3,196	631	6	4	17,908	0.6	647	6,631	51	18	17,977
Montana	411	9	-26	3	0	2,924	0.6	-285	352	18	5	2,947
Nebraska	832	273	433	1	1	3,747	0.4	19	1,100	1	4	3,752
Nevada	2,162	-96	342	0	0	20,899	1.4	-355	5,465	45	48	20,992
New Hampshire	314	-20	83	0	1	2,697	0.4	-592	802	0	3	2,700
New Jersey	7,445	-377	1,645	20	8	100,736	2.5	-4,570	22,794	231	146	101,113
New Mexico	598	-128	68	1	3	9,491	1.2	-241	2,457	62	21	9,574
New York	11,891	-3,051	111	14	16	170,499	1.9	-5,750	29,753	361	211	171,071
North Carolina	2,997	-462	342	0	0	20,552	0.4	-598	4,801	52	74	20,678
North Dakota	147	-18	-7	0	2	1,138	0.3	-87	296	22	4	1,164
Ohio	7,191	-3,425	1,231	2	8	35,215	0.7	-1,194	7,480	57	57	35,329
Oklahoma	1,191	-124	-557	8	3	9,530	0.6	21	-417	17	38	9,585
Oregon	3,464	-506	812	10	5	30,128	1.6	-2,608	10,546	69	51	30,248
Pennsylvania	8,850	-809	2,790	8	14	84,178	1.5	-10,318	24,060	250	114	84,542
Puerto Rico	1,436	15	350	3	3	16,933	1.9	-319	3,304	180	70	17,183
Rhode Island	491	-220	-121	1	1	8,567	1.8	-1,312	2,051	13	16	8,596
South Carolina	1,714	-242	-58	2	5	13,423	0.6	-26	1,856	39	42	13,504
South Dakota	129	-2	35	6	0	715	0.2	-90	202	16	0	731
Tennessee	2,157	-294	450	2	4	15,340	0.4	92	3,214	46	33	15,419
Texas	12,465	-1,393	397	28	65	128,598	1.0	-10,789	34,029	409	845	129,852
Utah	1,296	-257	354	5	4	9,719	0.6	-54	3,970	25	14	9,758
Vermont	152	-59	-37	0	0	2,020	0.7	-489	587	0	0	2,020
Virgin Islands	82	17	12	0	0	302	0.9	58	40	4	8	314
Virginia	2,118	-450	448	9	12	13,027	0.4	-65	2,731	90	89	13,206
Washington	4,663	136	1,020	2	15	49,741	1.4	-1,707	17,787	71	263	50,075
West Virginia	567	-114	30	0	0	5,863	0.9	-2	814	25	8	5,896
Wisconsin	3,060	41	-3	5	3	19,649	0.7	-1,664	3,565	35	9	19,693
Wyoming	195	-25	-23	1	0	1,170	0.4	-87	126	5	7	1,182
Totals	175,594	-15,759	23,450	272	319	1,655,850	1.1	-91,883	382,793	4,164	3,881	1,663,895

Figures appearing in columns showing over-the-week changes reflect all revisions in data for prior week submitted by state agencies.

1. The Unemployment Compensation program for Federal Employees (UCFE) and the Unemployment Compensation for Ex-servicemembers (UCX) exclude claims filed jointly under other programs to avoid duplication.
2. Rate is not seasonally adjusted. The source of U.S. total covered employment is BLS.

UNADJUSTED INITIAL CLAIMS FOR WEEK ENDED SEPTEMBER 9, 2023

STATES WITH AN INCREASE OF MORE THAN 1,000

State	Change	State Supplied Comment
IN	+2,627	No comment.

STATES WITH A DECREASE OF MORE THAN 1,000

State	Change	State Supplied Comment
OH	-3,425	Fewer layoffs in the manufacturing industry.
MO	-3,196	Fewer layoffs in the manufacturing, retail trade, and in accommodation and food services industries.
NY	-3,051	Fewer layoffs in the transportation and warehousing, health care and social assistance, and in real estate and rental and leasing industries.
CA	-1,880	No comment.
TX	-1,393	No comment.
HI	-1,094	No comment.

TECHNICAL NOTES

This news release presents the weekly unemployment insurance (UI) claims reported by each state's unemployment insurance program offices. These claims may be used for monitoring workload volume, assessing state program operations and for assessing labor market conditions. States initially report claims directly taken by the state liable for the benefit payments, regardless of where the claimant who filed the claim resided. These are the basis for the advance initial claims and continued claims reported each week. These data come from ETA 538, Advance Weekly Initial and Continued Claims Report. The following week initial claims and continued claims are revised based on a second reporting by states that reflect the claimants by state of residence. These data come from the ETA 539, Weekly Claims and Extended Benefits Trigger Data Report.

A. Initial Claims

An initial claim is a claim filed by an unemployed individual after a separation from an employer. The claimant requests a determination of basic eligibility for the UI program. When an initial claim is filed with a state, certain programmatic activities take place and these result in activity counts including the count of initial claims. The count of U.S. initial claims for unemployment insurance is a leading economic indicator because it is an indication of emerging labor market conditions in the country. However, these are weekly administrative data which are difficult to seasonally adjust, making the series subject to some volatility.

B. Continued Weeks Claimed

A person who has already filed an initial claim and who has experienced a week of unemployment then files a continued claim to claim benefits for that week of unemployment. On a weekly basis, continued claims are also referred to as insured unemployment, as continued claims reflect a good approximation of the current number of insured unemployed workers filing for UI benefits. The count of U.S. continued weeks claimed is also a good indicator of labor market conditions. While continued claims are not a leading indicator (they roughly coincide with economic cycles at their peaks and lag at cycle troughs), they provide confirming evidence of the direction of the U.S. economy.

C. Seasonal Adjustments and Annual Revisions

Over the course of a year, the weekly changes in the levels of initial claims and continued claims undergo regularly occurring fluctuations. These fluctuations may result from seasonal changes in weather, major holidays, the opening and closing of schools, or other similar events. Because these seasonal events follow a more or less regular pattern each year, their influence on the level of a series can be tempered by adjusting for regular seasonal variation. These adjustments make trend and cycle developments easier to spot. At the beginning of each calendar year, the Bureau of Labor Statistics provides the Employment and Training Administration (ETA) with a set of seasonal factors to apply to the unadjusted data during that year. Concurrent with the implementation and release of the new seasonal factors, ETA incorporates revisions to the UI claims historical series caused by updates to the unadjusted data. For further questions on the seasonal adjustment methodology, please see the [official release page for the UI claims seasonal adjustment factors](#) or contact BLS directly through the [Local Area Unemployment Statistics web contact form](#).

[Weekly Claims Archives](#)
[Weekly Claims Data](#)

U.S. Department of Labor news materials are accessible at <http://www.dol.gov>. The Department's [Reasonable Accommodation Resource Center](#) converts Departmental information and documents into alternative formats, which include Braille and large print. For alternative format requests, please contact the Department at (202) 693-7828 (voice) or (800) 877-8339 (federal relay).

U.S. Department of Labor
Employment and Training Administration
Washington, D.C. 20210
Release Number: USDL 23-2056-NAT

Program Contacts:
Lawrence Essien: (202) 693-3087
Media Contact: (202) 693-4676