



News Release

Connect with DOL at <https://blog.dol.gov>



TRANSMISSION OF MATERIALS IN THIS RELEASE IS EMBARGOED UNTIL
8:30 A.M. (Eastern) Thursday, March 23, 2023

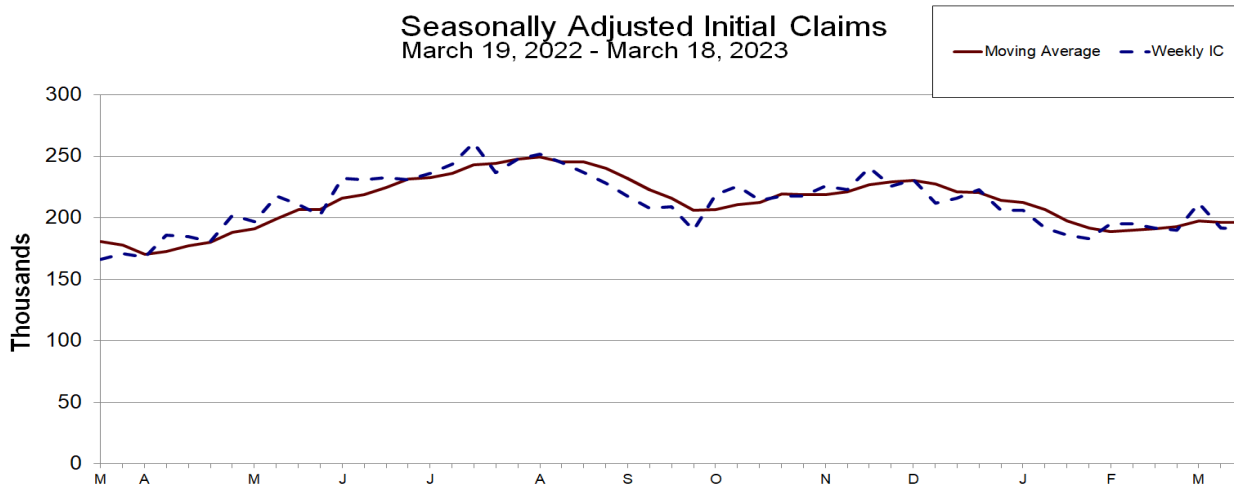
UNEMPLOYMENT INSURANCE WEEKLY CLAIMS

SEASONALLY ADJUSTED DATA

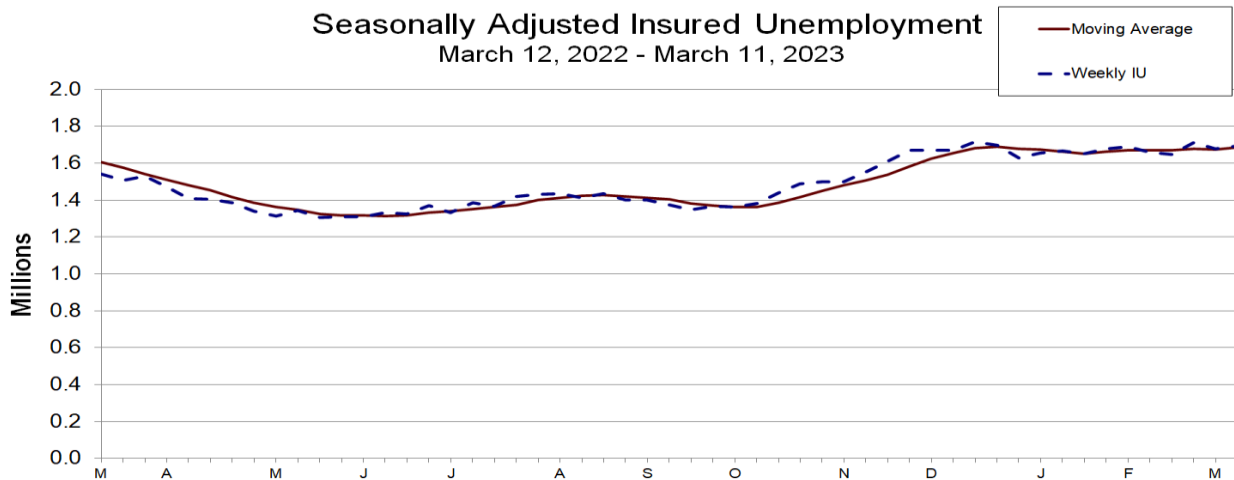
In the week ending March 18, the advance figure for seasonally adjusted **initial claims** was 191,000, a decrease of 1,000 from the previous week's unrevised level of 192,000. The 4-week moving average was 196,250, a decrease of 250 from the previous week's unrevised average of 196,500.

The advance seasonally adjusted **insured unemployment rate** was 1.2 percent for the week ending March 11, unchanged from the previous week's unrevised rate. The advance number for seasonally adjusted **insured unemployment** during the week ending March 11 was 1,694,000, an increase of 14,000 from the previous week's revised level. The previous week's level was revised down by 4,000 from 1,684,000 to 1,680,000. The 4-week moving average was 1,684,000, an increase of 8,500 from the previous week's revised average. The previous week's average was revised down by 1,000 from 1,676,500 to 1,675,500.

Seasonally Adjusted Initial Claims
March 19, 2022 - March 18, 2023



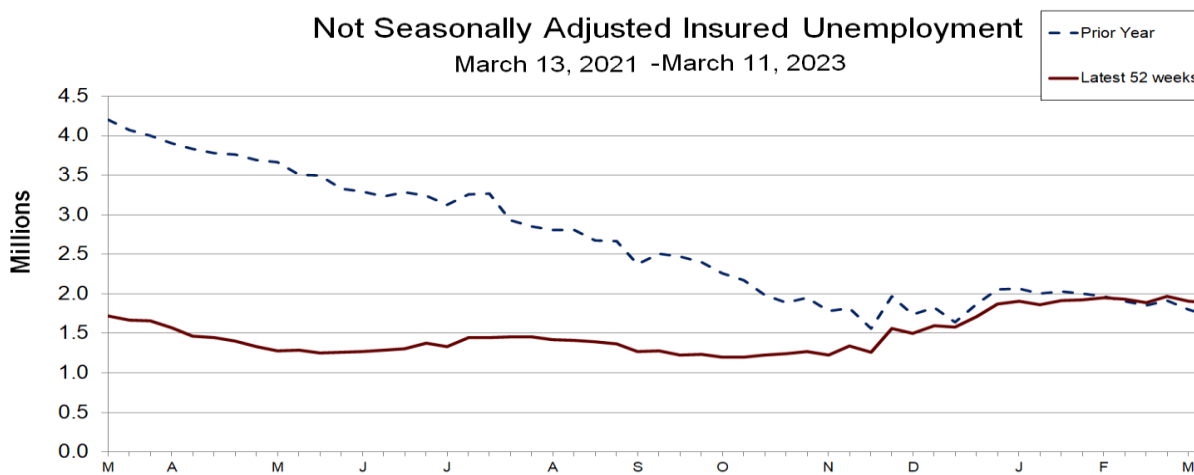
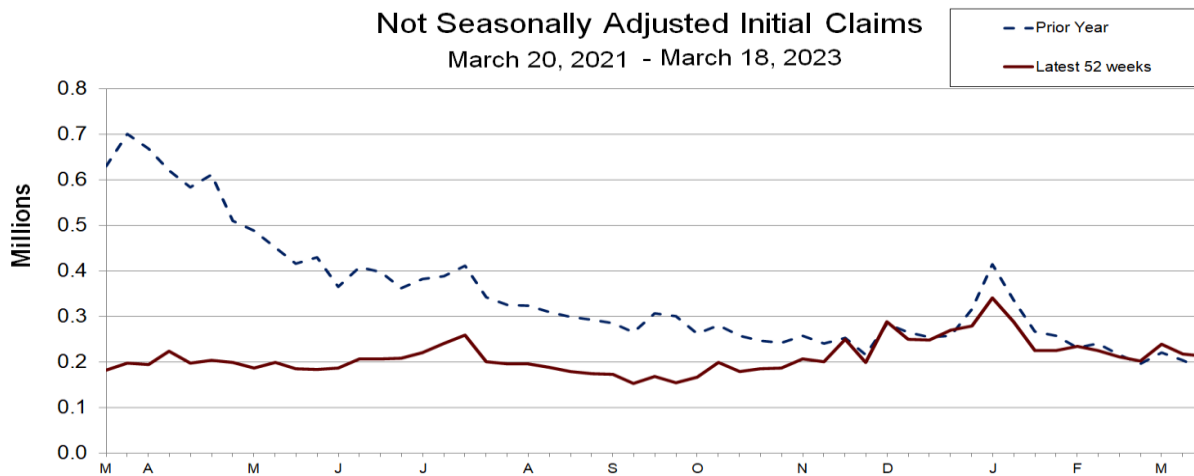
Seasonally Adjusted Insured Unemployment
March 12, 2022 - March 11, 2023



UNADJUSTED DATA

The advance number of actual initial claims under state programs, unadjusted, totaled 213,425 in the week ending March 18, a decrease of 4,659 (or -2.1 percent) from the previous week. The seasonal factors had expected a decrease of 3,269 (or -1.5 percent) from the previous week. There were 182,339 initial claims in the comparable week in 2022.

The advance unadjusted insured unemployment rate was 1.3 percent during the week ending March 11, unchanged from the prior week. The advance unadjusted level of insured unemployment in state programs totaled 1,888,410, a decrease of 21,632 (or -1.1 percent) from the preceding week. The seasonal factors had expected a decrease of 36,958 (or -1.9 percent) from the previous week. A year earlier the rate was 1.2 percent and the volume was 1,722,208.



The total number of continued weeks claimed for benefits in all programs for the week ending March 4 was 1,938,752, a decrease of 61,496 from the previous week. There were 1,857,801 weekly claims filed for benefits in all programs in the comparable week in 2022.

No state was triggered "on" the Extended Benefits program during the week ending March 4.

Initial claims for UI benefits filed by former Federal civilian employees totaled 353 in the week ending March 11, a decrease of 48 from the prior week. There were 336 initial claims filed by newly discharged veterans, a decrease of 48 from the preceding week.

There were 6,722 continued weeks claimed filed by former Federal civilian employees the week ending March 4, a decrease of 240 from the previous week. Newly discharged veterans claiming benefits totaled 4,229, unchanged from the prior week.

The highest insured unemployment rates in the week ending March 4 were in New Jersey (2.7), Rhode Island (2.5), Massachusetts (2.4), California (2.3), Minnesota (2.3), Alaska (2.0), Illinois (1.9), Montana (1.9), New York (1.9), and Puerto Rico (1.9).

The largest increases in initial claims for the week ending March 11 were in Ohio (+2,401), Indiana (+700), Illinois (+613), Florida (+596), and Oklahoma (+472), while the largest decreases were in New York (-15,436), California (-2,812), Oregon (-1,133), Minnesota (-1,042), and Georgia (-962).

UNEMPLOYMENT INSURANCE DATA FOR REGULAR STATE PROGRAMS

WEEK ENDING	March 18	March 11	Change	March 4	Prior Year¹
Initial Claims (SA)	191,000	192,000	-1,000	212,000	166,000
Initial Claims (NSA)	213,425	218,084	-4,659	238,840	182,339
4-Wk Moving Average (SA)	196,250	196,500	-250	197,250	180,750

WEEK ENDING	March 11	March 4	Change	February 25	Prior Year¹
Insured Unemployment (SA)	1,694,000	1,680,000	+14,000	1,713,000	1,542,000
Insured Unemployment (NSA)	1,888,410	1,910,042	-21,632	1,970,023	1,722,208
4-Wk Moving Average (SA)	1,684,000	1,675,500	+8,500	1,678,250	1,605,750
Insured Unemployment Rate (SA) ²	1.2%	1.2%	0.0	1.2%	1.1%
Insured Unemployment Rate (NSA) ²	1.3%	1.3%	0.0	1.4%	1.2%

INITIAL CLAIMS FILED IN FEDERAL PROGRAMS (UNADJUSTED)

WEEK ENDING	March 11	March 4	Change	Prior Year¹
Federal Employees (UCFE)	353	401	-48	488
Newly Discharged Veterans (UCX)	336	384	-48	321

CONTINUED WEEKS CLAIMED FILED FOR UI BENEFITS IN ALL PROGRAMS (UNADJUSTED)

WEEK ENDING	March 4	February 25	Change	Prior Year¹
Regular State	1,903,431	1,962,728	-59,297	1,799,782
Federal Employees	6,722	6,962	-240	9,624
Newly Discharged Veterans	4,229	4,229	0	4,258
Extended Benefits ³	1,835	1,978	-143	27,330
State Additional Benefits ⁴	2,038	2,062	-24	2,332
STC / Workshare ⁵	20,497	22,289	-1,792	14,475
TOTAL	1,938,752	2,000,248	-61,496	1,857,801

FOOTNOTES

SA - Seasonally Adjusted Data, NSA - Not Seasonally Adjusted Data Continued weeks claimed represent all weeks of benefits claimed during the week being reported, and do not represent weeks claimed by unique individuals.

1. Prior year is comparable to most recent data.
2. Most recent week used covered employment of 145,292,485 as denominator.
3. Information on the EB program can be found here: [EB Program information](#)
4. Some states maintain additional benefit programs for those claimants who exhaust regular benefits, and when applicable, extended benefits. Information on states that participate, and the extent of benefits paid, can be found starting on page 4-5 of this link: [Extensions and Special Programs PDF](#)
5. Information on STC/Worksharing can be found starting on page 4-11 of the following link: [Extensions and Special Programs PDF](#)

Advance State Claims - Not Seasonally Adjusted

STATE	Initial Claims Filed During Week Ended March 18			Insured Unemployment For Week Ended March 11		
	Advance	Prior Wk	Change	Advance	Prior Wk	Change
Alabama	1,997	2,238	-241	8,440	9,140	-700
Alaska	777	725	52	5,577	5,844	-267
Arizona	2,946	2,942	4	18,428	19,515	-1,087
Arkansas	1,212	1,347	-135	7,186	8,031	-845
California	45,232	47,643	-2,411	410,176	405,909	4,267
Colorado	2,369	2,507	-138	25,255	25,710	-455
Connecticut	3,553	3,286	267	30,107	29,587	520
Delaware	248	292	-44	4,518	4,707	-189
District of Columbia	1,126	971	155	4,820	4,760	60
Florida	4,767	5,461	-694	32,626	36,406	-3,780
Georgia	4,761	4,410	351	29,149	30,396	-1,247
Hawaii	1,042	1,137	-95	5,683	5,935	-252
Idaho	1,151	1,135	16	8,858	9,750	-892
Illinois	8,101	9,236	-1,135	115,417	111,796	3,621
Indiana	6,851	4,272	2,579	25,725	26,905	-1,180
Iowa	2,157	1,671	486	19,007	19,975	-968
Kansas	1,059	1,000	59	5,464	5,365	99
Kentucky	4,639	4,531	108	10,787	12,905	-2,118
Louisiana	1,471	1,715	-244	10,320	11,294	-974
Maine	646	782	-136	7,952	7,793	159
Maryland	1,576	1,865	-289	21,169	23,141	-1,972
Massachusetts	11,253	10,052	1,201	83,117	84,578	-1,461
Michigan	4,773	5,375	-602	64,208	65,716	-1,508
Minnesota	3,434	3,419	15	64,300	62,432	1,868
Mississippi	1,548	913	635	4,599	5,275	-676
Missouri	2,841	2,579	262	17,072	18,309	-1,237
Montana	515	550	-35	8,979	8,783	196
Nebraska	573	613	-40	5,338	5,565	-227
Nevada	2,005	2,241	-236	18,909	20,342	-1,433
New Hampshire	308	409	-101	2,865	3,557	-692
New Jersey	7,236	8,074	-838	105,472	107,734	-2,262
New Mexico	738	659	79	9,497	9,672	-175
New York	13,660	14,686	-1,026	172,324	173,671	-1,347
North Carolina	3,265	3,471	-206	17,852	18,639	-787
North Dakota	258	288	-30	5,078	4,861	217
Ohio	14,724	15,135	-411	56,655	59,185	-2,530
Oklahoma	1,274	1,311	-37	9,879	10,277	-398
Oregon	4,205	4,549	-344	32,975	33,216	-241
Pennsylvania	8,617	9,405	-788	93,657	97,806	-4,149
Puerto Rico	970	1,134	-164	13,916	16,972	-3,056
Rhode Island	850	770	80	11,378	11,582	-204
South Carolina	2,016	1,900	116	12,528	12,494	34
South Dakota	151	213	-62	2,697	2,700	-3
Tennessee	2,667	2,280	387	14,330	15,756	-1,426
Texas	13,708	14,514	-806	119,004	115,837	3,167
Utah	1,546	1,481	65	12,520	12,898	-378
Vermont	336	288	48	3,867	3,832	35
Virgin Islands	19	31	-12	200	206	-6
Virginia	1,784	1,700	84	13,131	11,837	1,294
Washington	4,844	5,133	-289	59,948	56,324	3,624
West Virginia	604	659	-55	8,962	8,528	434
Wisconsin	4,669	4,745	-76	33,656	34,047	-391
Wyoming	353	341	12	2,833	2,547	286
US Total	213,425	218,084	-4,659	1,888,410	1,910,042	-21,632

Note: Advance claims are not directly comparable to claims reported in prior weeks. Advance claims are reported by the state liable for paying the unemployment compensation, whereas previous weeks reported claims reflect claimants by state of residence. In addition, claims reported as "workshare equivalent" in the previous week are added to the advance claims as a proxy for the current week's "workshare equivalent" activity.

Seasonally Adjusted US Weekly UI Claims (in thousands)

Week Ending	Initial Claims	Change from		Insured Unemployment	Change from		IUR
		Prior Week	4-Week Average		Prior Week	4-Week Average	
March 12, 2022	177	-21	188.75	1,542	-52	1,605.75	1.1
March 19, 2022	166	-11	180.75	1,506	-36	1,576.50	1.1
March 26, 2022	171	5	178.00	1,529	23	1,542.75	1.1
April 2, 2022	168	-3	170.50	1,474	-55	1,512.75	1.1
April 9, 2022	186	18	172.75	1,407	-67	1,479.00	1.0
April 16, 2022	185	-1	177.50	1,403	-4	1,453.25	1.0
April 23, 2022	181	-4	180.00	1,387	-16	1,417.75	1.0
April 30, 2022	202	21	188.50	1,342	-45	1,384.75	1.0
May 7, 2022	197	-5	191.25	1,315	-27	1,361.75	0.9
May 14, 2022	218	21	199.50	1,343	28	1,346.75	1.0
May 21, 2022	211	-7	207.00	1,306	-37	1,326.50	0.9
May 28, 2022	202	-9	207.00	1,309	3	1,318.25	0.9
June 4, 2022	232	30	215.75	1,310	1	1,317.00	0.9
June 11, 2022	231	-1	219.00	1,331	21	1,314.00	1.0
June 18, 2022	233	2	224.50	1,324	-7	1,318.50	0.9
June 25, 2022	231	-2	231.75	1,372	48	1,334.25	1.0
July 2, 2022	236	5	232.75	1,333	-39	1,340.00	0.9
July 9, 2022	244	8	236.00	1,384	51	1,353.25	1.0
July 16, 2022	261	17	243.00	1,365	-19	1,363.50	1.0
July 23, 2022	237	-24	244.50	1,420	55	1,375.50	1.0
July 30, 2022	248	11	247.50	1,430	10	1,399.75	1.0
August 6, 2022	252	4	249.50	1,434	4	1,412.25	1.0
August 13, 2022	245	-7	245.50	1,412	-22	1,424.00	1.0
August 20, 2022	237	-8	245.50	1,437	25	1,428.25	1.0
August 27, 2022	228	-9	240.50	1,402	-35	1,421.25	1.0
September 3, 2022	218	-10	232.00	1,400	-2	1,412.75	1.0
September 10, 2022	208	-10	222.75	1,376	-24	1,403.75	1.0
September 17, 2022	209	1	215.75	1,346	-30	1,381.00	0.9
September 24, 2022	190	-19	206.25	1,365	19	1,371.75	1.0
October 1, 2022	219	29	206.50	1,364	-1	1,362.75	0.9
October 8, 2022	226	7	211.00	1,383	19	1,364.50	1.0
October 15, 2022	214	-12	212.25	1,438	55	1,387.50	1.0
October 22, 2022	218	4	219.25	1,487	49	1,418.00	1.0
October 29, 2022	218	0	219.00	1,498	11	1,451.50	1.0
November 5, 2022	226	8	219.00	1,498	0	1,480.25	1.0
November 12, 2022	223	-3	221.25	1,551	53	1,508.50	1.1
November 19, 2022	241	18	227.00	1,609	58	1,539.00	1.1
November 26, 2022	226	-15	229.00	1,670	61	1,582.00	1.2
December 3, 2022	231	5	230.25	1,669	-1	1,624.75	1.2
December 10, 2022	212	-19	227.50	1,669	0	1,654.25	1.2
December 17, 2022	216	4	221.25	1,718	49	1,681.50	1.2
December 24, 2022	223	7	220.50	1,697	-21	1,688.25	1.2
December 31, 2022	206	-17	214.25	1,630	-67	1,678.50	1.1
January 7, 2023	206	0	212.75	1,655	25	1,675.00	1.1
January 14, 2023	192	-14	206.75	1,666	11	1,662.00	1.1
January 21, 2023	186	-6	197.50	1,650	-16	1,650.25	1.1
January 28, 2023	183	-3	191.75	1,680	30	1,662.75	1.2
February 4, 2023	195	12	189.00	1,691	11	1,671.75	1.2
February 11, 2023	195	0	189.75	1,660	-31	1,670.25	1.1
February 18, 2023	192	-3	191.25	1,649	-11	1,670.00	1.1
February 25, 2023	190	-2	193.00	1,713	64	1,678.25	1.2
March 4, 2023	212	22	197.25	1,680	-33	1,675.50	1.2
March 11, 2023	192	-20	196.50	1,694	14	1,684.00	1.2
March 18, 2023	191	-1	196.25				

INITIAL CLAIMS FILED DURING WEEK ENDED
MARCH 11

INSURED UNEMPLOYMENT FOR WEEK ENDED
MARCH 4

STATE NAME	CHANGE FROM					CHANGE FROM					ALL PROGRAMS EXCLUDING RAILROAD RETIREMENT	
	STATE	LAST WEEK	YEAR AGO	UCFE ¹	UCX ¹	STATE (%) ²	LAST WEEK	YEAR AGO	UCFE ¹	UCX ¹		
Alabama	2,238	31	535	2	5	9,140	0.5	-104	4,753	26	14	9,180
Alaska	725	52	-244	2	0	5,844	2.0	-142	-854	98	13	5,955
Arizona	2,942	-179	434	1	9	19,515	0.7	-196	6,317	112	19	19,646
Arkansas	1,347	-469	322	1	0	8,031	0.7	114	-618	24	20	8,075
California	47,643	-2,812	4,031	91	58	405,909	2.3	-2,704	-7,990	1,161	879	407,949
Colorado	2,507	-170	280	3	5	25,710	0.9	-2,204	359	198	107	26,015
Connecticut	3,286	-492	722	1	3	29,587	1.8	-2,677	-734	32	30	29,649
Delaware	292	-244	-176	1	3	4,707	1.1	63	504	19	6	4,732
District of Columbia	971	328	-1,451	8	0	4,760	0.9	-1,015	-298	137	3	4,900
Florida	5,461	596	1,631	8	20	36,406	0.4	1,296	-987	85	113	36,604
Georgia	4,410	-962	-217	21	24	30,396	0.7	1,372	-51,821	119	116	30,631
Hawaii	1,137	-290	-175	1	6	5,935	1.0	-168	-1,676	40	52	6,027
Idaho	1,135	14	158	2	1	9,750	1.2	-460	1,724	154	21	9,925
Illinois	9,236	613	745	5	6	111,796	1.9	-5,707	-4,192	293	129	112,218
Indiana	4,272	700	977	10	5	26,905	0.9	879	327	39	20	26,964
Iowa	1,671	-9	295	1	2	19,975	1.3	-1,121	-1,930	18	6	19,999
Kansas	1,000	36	-2,140	2	0	5,365	0.4	-31	-1,723	24	11	5,400
Kentucky	4,531	48	-2,359	2	1	12,905	0.7	-623	-822	53	47	13,005
Louisiana	1,715	84	368	0	0	11,294	0.6	-132	-1,577	41	12	11,347
Maine	782	16	118	0	0	7,793	1.3	-178	-152	34	9	7,836
Maryland	1,865	-89	-126	2	2	23,141	0.8	749	-477	119	65	23,325
Massachusetts	10,052	-86	4,472	5	6	84,578	2.4	-6,150	7,103	102	76	84,756
Michigan	5,375	33	-2,321	2	2	65,716	1.6	-2,708	440	148	44	65,908
Minnesota	3,419	-1,042	-175	7	5	62,432	2.3	-2,073	971	98	56	62,586
Mississippi	913	103	67	0	1	5,275	0.5	-258	642	26	9	5,310
Missouri	2,579	185	-364	5	4	18,309	0.7	-2,032	-2,398	85	19	18,413
Montana	550	-215	-197	7	2	8,783	1.9	-1,035	57	378	24	9,185
Nebraska	613	-19	-142	0	3	5,565	0.6	-178	-172	7	2	5,574
Nevada	2,241	-237	360	3	2	20,342	1.4	189	4,847	128	42	20,512
New Hampshire	409	-335	-251	0	0	3,557	0.5	266	587	3	2	3,562
New Jersey	8,074	-239	-480	22	14	107,734	2.7	-1,432	18,273	265	163	108,162
New Mexico	659	-18	65	0	0	9,672	1.2	-164	140	167	20	9,859
New York	14,686	-15,436	-14,716	17	12	173,671	1.9	-15,465	-24,914	289	253	174,213
North Carolina	3,471	-107	825	2	1	18,639	0.4	-610	3,973	52	83	18,774
North Dakota	288	39	-2	1	0	4,861	1.2	-363	-912	13	7	4,881
Ohio	15,135	2,401	3,209	5	17	59,185	1.1	-1,710	2,756	66	86	59,337
Oklahoma	1,311	472	-244	3	6	10,277	0.7	-197	-1,728	29	36	10,342
Oregon	4,549	-1,133	690	19	3	33,216	1.8	-445	6,801	411	46	33,673
Pennsylvania	9,405	-114	2,285	8	11	97,806	1.7	-2,393	914	219	124	98,149
Puerto Rico	1,134	59	197	5	1	16,972	1.9	1,329	4,156	158	105	17,235
Rhode Island	770	85	-47	0	1	11,582	2.5	-1,895	-312	15	17	11,614
South Carolina	1,900	85	178	2	1	12,494	0.6	-284	2,437	30	38	12,562
South Dakota	213	-54	55	1	0	2,700	0.6	-87	-93	17	0	2,717
Tennessee	2,280	-59	344	6	3	15,756	0.5	-296	-154	37	48	15,841
Texas	14,514	331	1,176	45	65	115,837	0.9	-5,369	17,031	430	863	117,130
Utah	1,481	-137	33	7	3	12,898	0.8	-352	4,542	144	11	13,053
Vermont	288	-286	-99	0	0	3,832	1.3	-84	-294	2	1	3,835
Virgin Islands	31	0	-15	0	1	206	0.6	16	-364	2	2	210
Virginia	1,700	-186	-129	4	1	11,837	0.3	222	5,327	57	82	11,976
Washington	5,133	-820	-162	4	18	56,324	1.7	-1,385	8,063	350	253	56,927
West Virginia	659	-75	-49	0	2	8,528	1.3	-366	163	30	14	8,572
Wisconsin	4,745	-701	-626	3	1	34,047	1.2	-1,407	-3,312	90	10	34,147
Wyoming	341	-52	-67	6	0	2,547	1.0	-276	-120	48	1	2,596
Totals	218,084	-20,756	-2,402	353	336	1,910,042	1.3	-59,981	-7,417	6,722	4,229	1,920,993

Figures appearing in columns showing over-the-week changes reflect all revisions in data for prior week submitted by state agencies.

1. The Unemployment Compensation program for Federal Employees (UCFE) and the Unemployment Compensation for Ex-servicemembers (UCX) exclude claims filed jointly under other programs to avoid duplication.
2. Rate is not seasonally adjusted. The source of U.S. total covered employment is BLS.

UNADJUSTED INITIAL CLAIMS FOR WEEK ENDED MARCH 11, 2023

STATES WITH AN INCREASE OF MORE THAN 1,000

State	Change	State Supplied Comment
OH	+2,401	No comment.

STATES WITH A DECREASE OF MORE THAN 1,000

State	Change	State Supplied Comment
NY	-15,436	Fewer layoffs in the transportation and warehousing, accommodation and food services, and public administration industries.
CA	-2,812	Fewer layoffs in the service industry.
OR	-1,133	No comment.
MN	-1,042	No comment.

TECHNICAL NOTES

This news release presents the weekly unemployment insurance (UI) claims reported by each state's unemployment insurance program offices. These claims may be used for monitoring workload volume, assessing state program operations and for assessing labor market conditions. States initially report claims directly taken by the state liable for the benefit payments, regardless of where the claimant who filed the claim resided. These are the basis for the advance initial claims and continued claims reported each week. These data come from ETA 538, Advance Weekly Initial and Continued Claims Report. The following week initial claims and continued claims are revised based on a second reporting by states that reflect the claimants by state of residence. These data come from the ETA 539, Weekly Claims and Extended Benefits Trigger Data Report.

A. Initial Claims

An initial claim is a claim filed by an unemployed individual after a separation from an employer. The claimant requests a determination of basic eligibility for the UI program. When an initial claim is filed with a state, certain programmatic activities take place and these result in activity counts including the count of initial claims. The count of U.S. initial claims for unemployment insurance is a leading economic indicator because it is an indication of emerging labor market conditions in the country. However, these are weekly administrative data which are difficult to seasonally adjust, making the series subject to some volatility.

B. Continued Weeks Claimed

A person who has already filed an initial claim and who has experienced a week of unemployment then files a continued claim to claim benefits for that week of unemployment. On a weekly basis, continued claims are also referred to as insured unemployment, as continued claims reflect a good approximation of the current number of insured unemployed workers filing for UI benefits. The count of U.S. continued weeks claimed is also a good indicator of labor market conditions. While continued claims are not a leading indicator (they roughly coincide with economic cycles at their peaks and lag at cycle troughs), they provide confirming evidence of the direction of the U.S. economy.

C. Seasonal Adjustments and Annual Revisions

Over the course of a year, the weekly changes in the levels of initial claims and continued claims undergo regularly occurring fluctuations. These fluctuations may result from seasonal changes in weather, major holidays, the opening and closing of schools, or other similar events. Because these seasonal events follow a more or less regular pattern each year, their influence on the level of a series can be tempered by adjusting for regular seasonal variation. These adjustments make trend and cycle developments easier to spot. At the beginning of each calendar year, the Bureau of Labor Statistics provides the Employment and Training Administration (ETA) with a set of seasonal factors to apply to the unadjusted data during that year. Concurrent with the implementation and release of the new seasonal factors, ETA incorporates revisions to the UI claims historical series caused by updates to the unadjusted data. For further questions on the seasonal adjustment methodology, please see the [official release page for the UI claims seasonal adjustment factors](#) or contact BLS directly through the [Local Area Unemployment Statistics web contact form](#).

[Weekly Claims Archives](#)
[Weekly Claims Data](#)

U.S. Department of Labor news materials are accessible at <http://www.dol.gov>. The Department's [Reasonable Accommodation Resource Center](#) converts Departmental information and documents into alternative formats, which include Braille and large print. For alternative format requests, please contact the Department at (202) 693-7828 (voice) or (800) 877-8339 (federal relay).

U.S. Department of Labor
Employment and Training Administration
Washington, D.C. 20210
Release Number: USDL 23-569-NAT

Program Contacts:
Kevin Stapleton: (202) 693-3009
Media Contact: (202) 693-4676