



News Release

Connect with DOL at <https://blog.dol.gov>



TRANSMISSION OF MATERIALS IN THIS RELEASE IS EMBARGOED UNTIL
8:30 A.M. (Eastern) Thursday, September 1, 2022

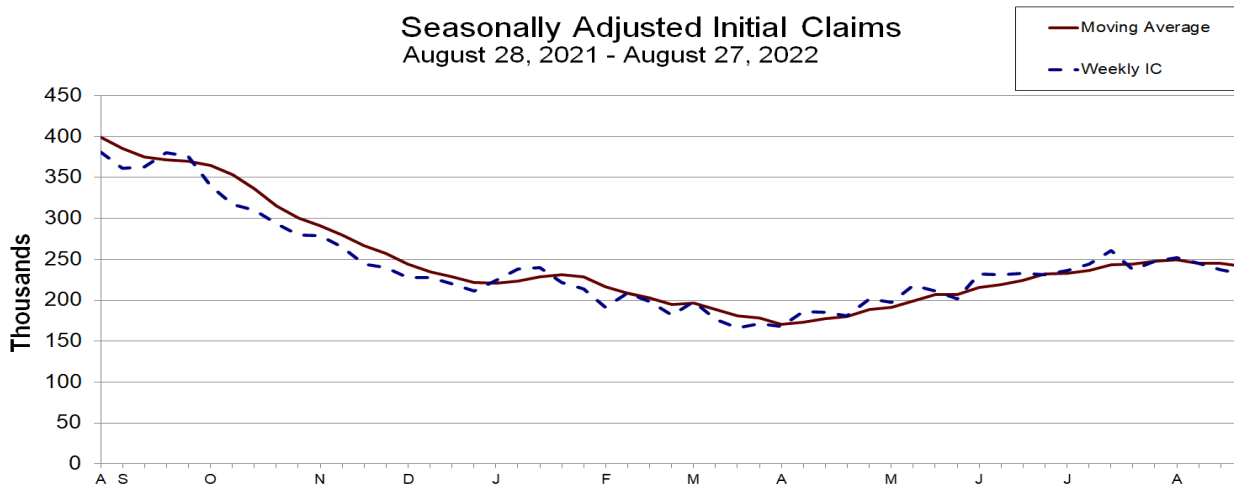
UNEMPLOYMENT INSURANCE WEEKLY CLAIMS

SEASONALLY ADJUSTED DATA

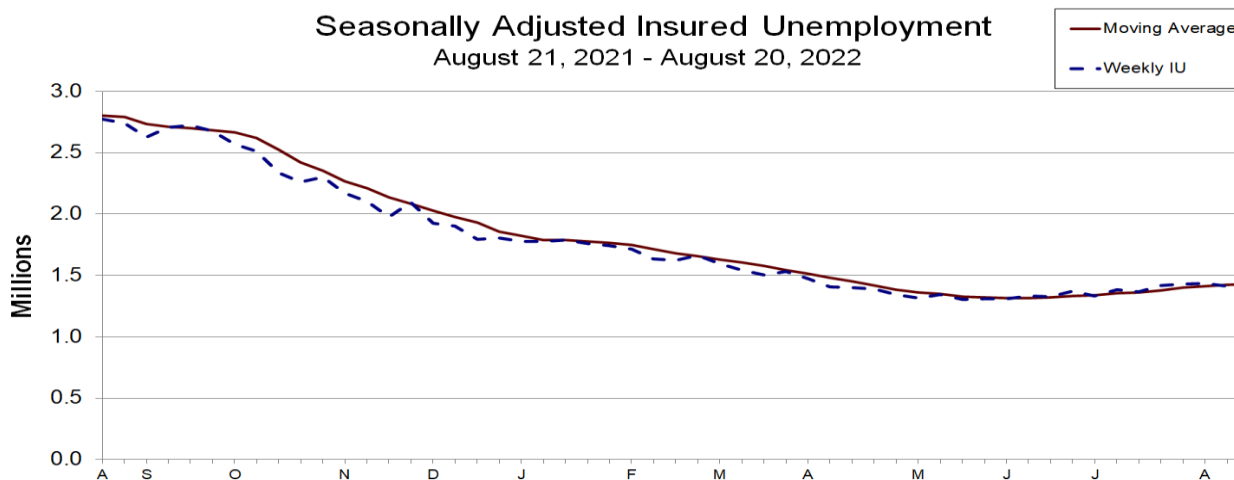
In the week ending August 27, the advance figure for seasonally adjusted **initial claims** was 232,000, a decrease of 5,000 from the previous week's revised level. The previous week's level was revised down by 6,000 from 243,000 to 237,000. The 4-week moving average was 241,500, a decrease of 4,000 from the previous week's revised average. The previous week's average was revised down by 1,500 from 247,000 to 245,500.

The advance seasonally adjusted **insured unemployment rate** was 1.0 percent for the week ending August 20, unchanged from the previous week's unrevised rate. The advance number for seasonally adjusted **insured unemployment** during the week ending August 20 was 1,438,000, an increase of 26,000 from the previous week's revised level. The previous week's level was revised down by 3,000 from 1,415,000 to 1,412,000. The 4-week moving average was 1,428,500, an increase of 4,500 from the previous week's revised average. The previous week's average was revised down by 750 from 1,424,750 to 1,424,000.

Seasonally Adjusted Initial Claims
August 28, 2021 - August 27, 2022



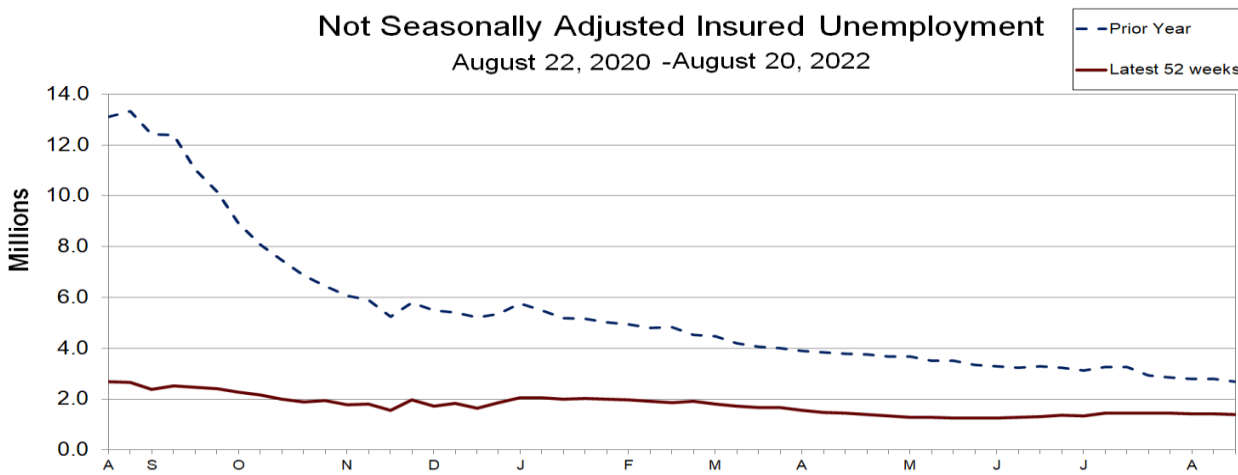
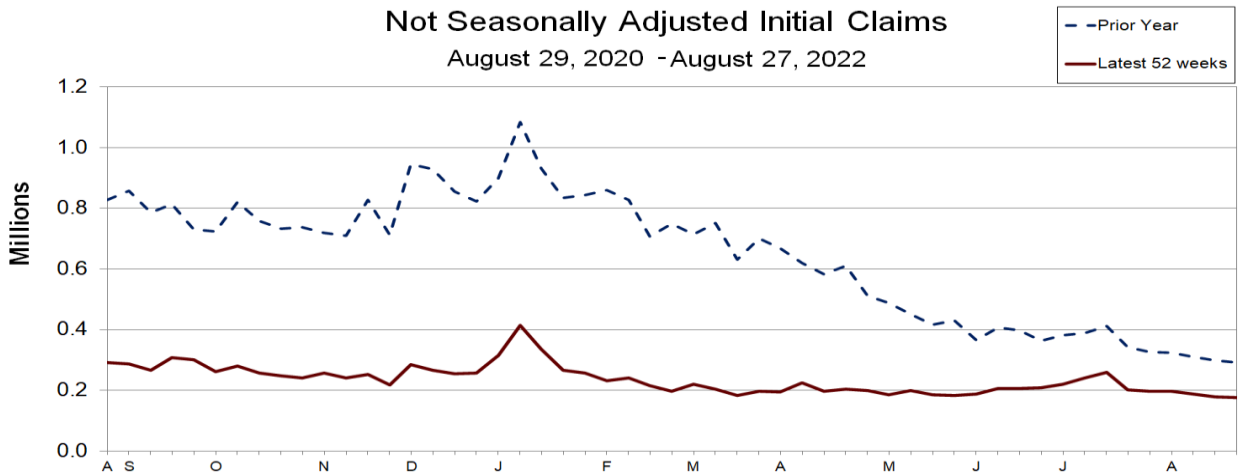
Seasonally Adjusted Insured Unemployment
August 21, 2021 - August 20, 2022



UNADJUSTED DATA

The advance number of actual initial claims under state programs, unadjusted, totaled 176,793 in the week ending August 27, a decrease of 2,492 (or -1.4 percent) from the previous week. The seasonal factors had expected an increase of 946 (or 0.5 percent) from the previous week. There were 292,292 initial claims in the comparable week in 2021.

The advance unadjusted insured unemployment rate was 1.0 percent during the week ending August 20, unchanged from the prior week. The advance unadjusted level of insured unemployment in state programs totaled 1,392,268, a decrease of 22,085 (or -1.6 percent) from the preceding week. The seasonal factors had expected a decrease of 47,992 (or -3.4 percent) from the previous week. A year earlier the rate was 2.0 percent and the volume was 2,674,769.



The total number of continued weeks claimed for benefits in all programs for the week ending August 13 was 1,438,128, a decrease of 10,407 from the previous week. There were 12,186,219 weekly claims filed for benefits in all programs in the comparable week in 2021.

No state was triggered "on" the Extended Benefits program during the week ending August 13.

Initial claims for UI benefits filed by former Federal civilian employees totaled 375 in the week ending August 20, a decrease of 4 from the prior week. There were 381 initial claims filed by newly discharged veterans, a decrease of 19 from the preceding week.

There were 6,649 continued weeks claimed filed by former Federal civilian employees the week ending August 13, a decrease of 20 from the previous week. Newly discharged veterans claiming benefits totaled 4,374, an increase of 19 from the prior week.

The highest insured unemployment rates in the week ending August 13 were in New Jersey (2.2), Puerto Rico (2.0), Connecticut (1.9), California (1.8), Rhode Island (1.8), New York (1.6), Massachusetts (1.5), Pennsylvania (1.5), Alaska (1.2), Illinois (1.2), Nevada (1.2), and Oregon (1.2).

The largest increases in initial claims for the week ending August 20 were in Arkansas (+451), Illinois (+428), Connecticut (+390), New York (+336), and Rhode Island (+219), while the largest decreases were in California (-2,130), New Jersey (-1,400), Indiana (-1,263), Oklahoma (-1,174), and Michigan (-714).

UNEMPLOYMENT INSURANCE DATA FOR REGULAR STATE PROGRAMS

WEEK ENDING	August 27	August 20	Change	August 13	Prior Year¹
Initial Claims (SA)	232,000	237,000	-5,000	245,000	381,000
Initial Claims (NSA)	176,793	179,285	-2,492	187,453	292,292
4-Wk Moving Average (SA)	241,500	245,500	-4,000	245,500	399,250

WEEK ENDING	August 20	August 13	Change	August 6	Prior Year¹
Insured Unemployment (SA)	1,438,000	1,412,000	+26,000	1,434,000	2,772,000
Insured Unemployment (NSA)	1,392,268	1,414,353	-22,085	1,423,795	2,674,769
4-Wk Moving Average (SA)	1,428,500	1,424,000	+4,500	1,412,250	2,802,250
Insured Unemployment Rate (SA) ²	1.0%	1.0%	0.0	1.0%	2.0%
Insured Unemployment Rate (NSA) ²	1.0%	1.0%	0.0	1.0%	2.0%

INITIAL CLAIMS FILED IN FEDERAL PROGRAMS (UNADJUSTED)³

WEEK ENDING	August 20	August 13	Change	Prior Year¹
Federal Employees (UCFE)	375	379	-4	618
Newly Discharged Veterans (UCX)	381	400	-19	533

CONTINUED WEEKS CLAIMED FILED FOR UI BENEFITS IN ALL PROGRAMS (UNADJUSTED)³

WEEK ENDING	August 13	August 6	Change	Prior Year¹
Regular State	1,411,524	1,420,855	-9,331	2,796,782
Federal Employees	6,649	6,669	-20	8,977
Newly Discharged Veterans	4,374	4,355	+19	6,024
Extended Benefits ⁴	4,244	5,130	-886	114,357
State Additional Benefits ⁵	1,654	1,929	-275	1,030
STC / Workshare ⁶	9,683	9,597	+86	45,811
TOTAL⁷	1,438,128	1,448,535	-10,407	12,186,219

FOOTNOTES

SA - Seasonally Adjusted Data, NSA - Not Seasonally Adjusted Data Continued weeks claimed represent all weeks of benefits claimed during the week being reported, and do not represent weeks claimed by unique individuals.

1. Prior year is comparable to most recent data.
2. Most recent week used covered employment of 141,769,719 as denominator.
3. NOTICE: Ongoing claims for PUA and PEUC are no longer included in this news release. Any ongoing claims for these programs represent activity for periods prior to the programs' expiration on September 6, 2021. Claims activity for these programs will continue to be posted online at: [Weekly Pandemic Program Claims](#)
4. Information on the EB program can be found here: [EB Program information](#)
5. Some states maintain additional benefit programs for those claimants who exhaust regular benefits, and when applicable, extended benefits. Information on states that participate, and the extent of benefits paid, can be found starting on page 4-5 of this link: [Extensions and Special Programs PDF](#)
6. Information on STC/Worksharing can be found starting on page 4-11 of the following link: [Extensions and Special Programs PDF](#)
7. Prior year total includes PUA and PEUC claims.

Advance State Claims - Not Seasonally Adjusted

STATE	Initial Claims Filed During Week Ended August 27			Insured Unemployment For Week Ended August 20		
	Advance	Prior Wk	Change	Advance	Prior Wk	Change
Alabama	2,506	2,529	-23	3,561	5,059	-1,498
Alaska	772	680	92	3,236	3,383	-147
Arizona	2,767	2,907	-140	21,273	23,860	-2,587
Arkansas	1,317	1,973	-656	7,655	8,513	-858
California	36,926	37,121	-195	320,265	309,220	11,045
Colorado	2,092	2,114	-22	17,206	17,383	-177
Connecticut	5,182	6,998	-1,816	26,382	29,915	-3,533
Delaware	247	267	-20	3,968	3,895	73
District of Columbia	294	305	-11	3,789	3,321	468
Florida	5,135	5,809	-674	36,914	40,529	-3,615
Georgia	4,864	5,933	-1,069	32,024	33,395	-1,371
Hawaii	1,229	931	298	6,043	5,727	316
Idaho	655	711	-56	3,160	3,791	-631
Illinois	6,346	6,884	-538	63,675	65,024	-1,349
Indiana	3,383	4,046	-663	18,744	18,694	50
Iowa	1,208	1,269	-61	6,935	7,099	-164
Kansas	1,078	1,163	-85	4,056	4,055	1
Kentucky	1,514	1,479	35	8,268	8,701	-433
Louisiana	1,636	1,799	-163	10,279	12,021	-1,742
Maine	356	372	-16	3,042	3,339	-297
Maryland	1,636	1,909	-273	18,197	18,721	-524
Massachusetts	4,231	1,152	3,079	51,254	51,320	-66
Michigan	6,445	5,317	1,128	30,982	32,438	-1,456
Minnesota	2,382	2,491	-109	24,283	23,595	688
Mississippi	904	1,140	-236	4,920	5,742	-822
Missouri	2,112	3,482	-1,370	14,735	16,538	-1,803
Montana	379	428	-49	2,925	3,179	-254
Nebraska	448	508	-60	2,794	3,136	-342
Nevada	2,113	2,082	31	14,972	15,559	-587
New Hampshire	271	334	-63	2,446	2,577	-131
New Jersey	6,164	6,066	98	86,541	84,003	2,538
New Mexico	584	551	33	7,159	7,408	-249
New York	18,471	13,717	4,754	145,931	140,006	5,925
North Carolina	3,016	3,274	-258	15,619	16,802	-1,183
North Dakota	155	138	17	1,220	1,338	-118
Ohio	5,962	6,316	-354	29,462	31,395	-1,933
Oklahoma	1,468	2,802	-1,334	10,267	10,851	-584
Oregon	3,292	3,176	116	20,894	21,559	-665
Pennsylvania	6,338	6,355	-17	72,534	85,764	-13,230
Puerto Rico	1,058	1,098	-40	14,302	16,902	-2,600
Rhode Island	745	740	5	8,170	8,073	97
South Carolina	2,055	1,857	198	11,766	12,399	-633
South Dakota	83	100	-17	634	673	-39
Tennessee	1,931	2,188	-257	11,807	12,708	-901
Texas	13,792	14,228	-436	102,922	103,953	-1,031
Utah	1,059	1,103	-44	5,896	5,957	-61
Vermont	306	441	-135	2,393	2,028	365
Virgin Islands	27	59	-32	322	378	-56
Virginia	2,375	2,814	-439	14,587	12,543	2,044
Washington	3,680	3,876	-196	35,645	33,342	2,303
West Virginia	698	971	-273	5,783	5,721	62
Wisconsin	2,915	3,043	-128	19,155	19,592	-437
Wyoming	191	239	-48	1,276	1,229	47
US Total	176,793	179,285	-2,492	1,392,268	1,414,353	-22,085

Note: Advance claims are not directly comparable to claims reported in prior weeks. Advance claims are reported by the state liable for paying the unemployment compensation, whereas previous weeks reported claims reflect claimants by state of residence. In addition, claims reported as "workshare equivalent" in the previous week are added to the advance claims as a proxy for the current week's "workshare equivalent" activity.

Seasonally Adjusted US Weekly UI Claims (in thousands)

Week Ending	Initial Claims	Change from		Insured Unemployment	Change from		IUR
		Prior Week	4-Week Average		Prior Week	4-Week Average	
August 21, 2021	395	-10	407.50	2,772	-32	2,802.25	2.0
August 28, 2021	381	-14	399.25	2,740	-32	2,788.75	2.0
September 4, 2021	361	-20	385.50	2,628	-112	2,736.00	1.9
September 11, 2021	363	2	375.00	2,705	77	2,711.25	2.0
September 18, 2021	380	17	371.25	2,720	15	2,698.25	2.0
September 25, 2021	376	-4	370.00	2,674	-46	2,681.75	2.0
October 2, 2021	340	-36	364.75	2,571	-103	2,667.50	1.9
October 9, 2021	317	-23	353.25	2,512	-59	2,619.25	1.9
October 16, 2021	310	-7	335.75	2,334	-178	2,522.75	1.7
October 23, 2021	294	-16	315.25	2,263	-71	2,420.00	1.7
October 30, 2021	280	-14	300.25	2,303	40	2,353.00	1.7
November 6, 2021	279	-1	290.75	2,172	-131	2,268.00	1.6
November 13, 2021	265	-14	279.50	2,100	-72	2,209.50	1.6
November 20, 2021	244	-21	267.00	1,976	-124	2,137.75	1.5
November 27, 2021	240	-4	257.00	2,098	122	2,086.50	1.6
December 4, 2021	228	-12	244.25	1,927	-171	2,025.25	1.4
December 11, 2021	228	0	235.00	1,904	-23	1,976.25	1.4
December 18, 2021	220	-8	229.00	1,793	-111	1,930.50	1.3
December 25, 2021	211	-9	221.75	1,805	12	1,857.25	1.3
January 1, 2022	224	13	220.75	1,778	-27	1,820.00	1.3
January 8, 2022	238	14	223.25	1,776	-2	1,788.00	1.3
January 15, 2022	240	2	228.25	1,787	11	1,786.50	1.3
January 22, 2022	222	-18	231.00	1,757	-30	1,774.50	1.3
January 29, 2022	214	-8	228.50	1,743	-14	1,765.75	1.3
February 5, 2022	191	-23	216.75	1,714	-29	1,750.25	1.2
February 12, 2022	209	18	209.00	1,633	-81	1,711.75	1.2
February 19, 2022	198	-11	203.00	1,623	-10	1,678.25	1.2
February 26, 2022	182	-16	195.00	1,664	41	1,658.50	1.2
March 5, 2022	198	16	196.75	1,594	-70	1,628.50	1.2
March 12, 2022	177	-21	188.75	1,542	-52	1,605.75	1.1
March 19, 2022	166	-11	180.75	1,506	-36	1,576.50	1.1
March 26, 2022	171	5	178.00	1,529	23	1,542.75	1.1
April 2, 2022	168	-3	170.50	1,474	-55	1,512.75	1.1
April 9, 2022	186	18	172.75	1,407	-67	1,479.00	1.0
April 16, 2022	185	-1	177.50	1,403	-4	1,453.25	1.0
April 23, 2022	181	-4	180.00	1,387	-16	1,417.75	1.0
April 30, 2022	202	21	188.50	1,342	-45	1,384.75	1.0
May 7, 2022	197	-5	191.25	1,315	-27	1,361.75	0.9
May 14, 2022	218	21	199.50	1,343	28	1,346.75	1.0
May 21, 2022	211	-7	207.00	1,306	-37	1,326.50	0.9
May 28, 2022	202	-9	207.00	1,309	3	1,318.25	0.9
June 4, 2022	232	30	215.75	1,310	1	1,317.00	0.9
June 11, 2022	231	-1	219.00	1,331	21	1,314.00	1.0
June 18, 2022	233	2	224.50	1,324	-7	1,318.50	0.9
June 25, 2022	231	-2	231.75	1,372	48	1,334.25	1.0
July 2, 2022	236	5	232.75	1,333	-39	1,340.00	0.9
July 9, 2022	244	8	236.00	1,384	51	1,353.25	1.0
July 16, 2022	261	17	243.00	1,365	-19	1,363.50	1.0
July 23, 2022	237	-24	244.50	1,420	55	1,375.50	1.0
July 30, 2022	248	11	247.50	1,430	10	1,399.75	1.0
August 6, 2022	252	4	249.50	1,434	4	1,412.25	1.0
August 13, 2022	245	-7	245.50	1,412	-22	1,424.00	1.0
August 20, 2022	237	-8	245.50	1,438	26	1,428.50	1.0
August 27, 2022	232	-5	241.50				

INITIAL CLAIMS FILED DURING WEEK ENDED
AUGUST 20

INSURED UNEMPLOYMENT FOR WEEK ENDED
AUGUST 13

STATE NAME	STATE	CHANGE FROM				STATE (%) ²	CHANGE FROM				ALL PROGRAMS EXCLUDING RAILROAD RETIREMENT	
		LAST WEEK	YEAR AGO	UCFE ¹	UCX ¹		LAST WEEK	YEAR AGO	UCFE ¹	UCX ¹		
Alabama	2,529	-283	-2,878	9	7	5,059	0.3	-406	-5,223	64	48	5,171
Alaska	680	-7	-1,107	2	3	3,383	1.2	-134	-2,537	30	11	3,424
Arizona	2,907	-187	-112	1	0	23,860	0.9	201	-11,893	89	48	23,997
Arkansas	1,973	451	363	2	0	8,513	0.7	-295	-8,570	24	21	8,558
California	37,121	-2,130	-26,225	87	70	309,220	1.8	-2,276	-328,585	896	774	310,890
Colorado	2,114	4	-1,254	2	2	17,383	0.7	328	-15,170	177	136	17,696
Connecticut	6,998	390	3,669	2	4	29,915	1.9	476	-16,203	49	40	30,004
Delaware	267	-58	-296	3	2	3,895	0.9	-62	-3,365	29	6	3,930
District of Columbia	305	23	-2,263	2	0	3,321	0.6	-76	-15,972	112	2	3,435
Florida	5,809	-265	-2,168	18	29	40,529	0.5	-1,038	-37,615	198	100	40,827
Georgia	5,933	104	-3,817	34	19	33,395	0.8	2,429	-45,782	355	200	33,950
Hawaii	931	-110	-1,087	2	9	5,727	1.0	-235	-7,001	41	54	5,822
Idaho	711	-12	-269	1	1	3,791	0.5	-348	-455	7	8	3,806
Illinois	6,884	428	-15,374	9	5	65,024	1.2	202	-122,083	487	98	65,609
Indiana	4,046	-1,263	-2,208	2	5	18,694	0.7	-1,967	-24,588	50	20	18,764
Iowa	1,269	88	-408	4	0	7,099	0.5	-655	-7,829	15	3	7,117
Kansas	1,163	-58	-345	0	1	4,055	0.3	-32	-4,613	25	22	4,102
Kentucky	1,479	-146	-349	0	0	8,701	0.5	-109	-6,176	31	59	8,791
Louisiana	1,799	-163	-418	2	6	12,021	0.7	-400	-25,294	67	20	12,108
Maine	372	-22	-383	1	0	3,339	0.6	34	-4,209	11	5	3,355
Maryland	1,909	-45	-5,326	10	1	18,721	0.8	277	-27,718	172	78	18,971
Massachusetts	1,152	-100	-5,532	9	7	51,320	1.5	-1,922	-16,013	135	70	51,525
Michigan	5,317	-714	-208	2	2	32,438	0.8	-611	-54,689	68	47	32,553
Minnesota	2,491	-8	-1,312	4	4	23,595	0.9	-195	-28,830	53	57	23,705
Mississippi	1,140	5	-1,030	1	2	5,742	0.5	-494	-9,075	40	8	5,790
Missouri	3,482	-236	-312	5	2	16,538	0.6	-170	-14,679	66	22	16,626
Montana	428	-26	-302	1	4	3,179	0.7	-105	-1,667	43	9	3,231
Nebraska	508	-23	-405	0	0	3,136	0.3	-358	-2,131	8	1	3,145
Nevada	2,082	121	-313	1	0	15,559	1.2	-547	-17,101	59	42	15,660
New Hampshire	334	-74	-220	2	0	2,577	0.4	74	-2,597	11	8	2,596
New Jersey	6,066	-1,400	-4,709	19	12	84,003	2.2	-131	-47,423	288	174	84,465
New Mexico	551	-68	-4,566	2	2	7,408	1.0	-207	-9,143	77	56	7,541
New York	13,717	336	-1,215	14	21	140,006	1.6	218	-117,909	466	254	140,726
North Carolina	3,274	-238	-1,932	1	2	16,802	0.4	94	-18,729	55	76	16,933
North Dakota	138	-38	-121	1	0	1,338	0.3	-126	-1,094	140	3	1,481
Ohio	6,316	68	-1,870	6	10	31,395	0.6	-1,434	-25,230	67	74	31,536
Oklahoma	2,802	-1,174	-344	2	3	10,851	0.7	-524	-16,698	62	45	10,958
Oregon	3,176	-209	-3,817	8	2	21,559	1.2	288	-20,895	135	34	21,728
Pennsylvania	6,355	-293	-3,000	18	9	85,764	1.5	5,311	-32,391	207	99	86,070
Puerto Rico	1,098	-308	-997	2	10	16,902	2.0	-1,603	-22,060	274	71	17,247
Rhode Island	740	219	-1,094	1	0	8,073	1.8	-194	-5,290	17	17	8,107
South Carolina	1,857	-138	281	5	4	12,399	0.6	-319	-18,222	42	45	12,486
South Dakota	100	-30	-76	0	0	673	0.2	-109	-907	140	1	814
Tennessee	2,188	-187	-3,216	3	4	12,708	0.4	-990	-26,113	29	41	12,778
Texas	14,228	5	-6,107	63	95	103,953	0.8	-251	-75,318	897	945	105,795
Utah	1,103	-113	-487	3	2	5,957	0.4	11	-2,056	42	15	6,014
Vermont	441	186	192	0	0	2,028	0.7	-33	-2,519	1	0	2,029
Virgin Islands	59	27	-93	0	1	378	1.1	26	-582	0	4	382
Virginia	2,814	-169	-9,109	3	5	12,543	0.3	44	-24,532	108	103	12,754
Washington	3,876	-25	-1,664	2	10	33,342	1.0	-42	-26,620	117	275	33,734
West Virginia	971	54	33	0	1	5,721	0.9	-425	-4,293	27	14	5,762
Wisconsin	3,043	-311	-3,661	4	3	19,592	0.7	-643	-29,329	45	7	19,644
Wyoming	239	-46	-45	0	0	1,229	0.5	11	-407	1	4	1,234
Totals	179,285	-8,168	-119,506	375	381	1,414,353	1.0	-9,442	-1,395,423	6,649	4,374	1,425,376

Figures appearing in columns showing over-the-week changes reflect all revisions in data for prior week submitted by state agencies.

1. The Unemployment Compensation program for Federal Employees (UCFE) and the Unemployment Compensation for Ex-servicemembers (UCX) exclude claims filed jointly under other programs to avoid duplication.
2. Rate is not seasonally adjusted. The source of U.S. total covered employment is BLS.

UNADJUSTED INITIAL CLAIMS FOR WEEK ENDED AUGUST 20, 2022

STATES WITH AN INCREASE OF MORE THAN 1,000

State	Change	State Supplied Comment
None		

STATES WITH A DECREASE OF MORE THAN 1,000

State	Change	State Supplied Comment
CA	-2,130	No comment.
NJ	-1,400	No comment.
IN	-1,263	No comment.
OK	-1,174	No comment.

TECHNICAL NOTES

This news release presents the weekly unemployment insurance (UI) claims reported by each state's unemployment insurance program offices. These claims may be used for monitoring workload volume, assessing state program operations and for assessing labor market conditions. States initially report claims directly taken by the state liable for the benefit payments, regardless of where the claimant who filed the claim resided. These are the basis for the advance initial claims and continued claims reported each week. These data come from ETA 538, Advance Weekly Initial and Continued Claims Report. The following week initial claims and continued claims are revised based on a second reporting by states that reflect the claimants by state of residence. These data come from the ETA 539, Weekly Claims and Extended Benefits Trigger Data Report.

A. Initial Claims

An initial claim is a claim filed by an unemployed individual after a separation from an employer. The claimant requests a determination of basic eligibility for the UI program. When an initial claim is filed with a state, certain programmatic activities take place and these result in activity counts including the count of initial claims. The count of U.S. initial claims for unemployment insurance is a leading economic indicator because it is an indication of emerging labor market conditions in the country. However, these are weekly administrative data which are difficult to seasonally adjust, making the series subject to some volatility.

B. Continued Weeks Claimed

A person who has already filed an initial claim and who has experienced a week of unemployment then files a continued claim to claim benefits for that week of unemployment. On a weekly basis, continued claims are also referred to as insured unemployment, as continued claims reflect a good approximation of the current number of insured unemployed workers filing for UI benefits. The count of U.S. continued weeks claimed is also a good indicator of labor market conditions. While continued claims are not a leading indicator (they roughly coincide with economic cycles at their peaks and lag at cycle troughs), they provide confirming evidence of the direction of the U.S. economy.

C. Seasonal Adjustments and Annual Revisions

Over the course of a year, the weekly changes in the levels of initial claims and continued claims undergo regularly occurring fluctuations. These fluctuations may result from seasonal changes in weather, major holidays, the opening and closing of schools, or other similar events. Because these seasonal events follow a more or less regular pattern each year, their influence on the level of a series can be tempered by adjusting for regular seasonal variation. These adjustments make trend and cycle developments easier to spot. At the beginning of each calendar year, the Bureau of Labor Statistics provides the Employment and Training Administration (ETA) with a set of seasonal factors to apply to the unadjusted data during that year. Concurrent with the implementation and release of the new seasonal factors, ETA incorporates revisions to the UI claims historical series caused by updates to the unadjusted data. For further questions on the seasonal adjustment methodology, please see the [official release page for the UI claims seasonal adjustment factors](#) or contact BLS directly through the [Local Area Unemployment Statistics web contact form](#).

[Weekly Claims Archives](#)
[Weekly Claims Data](#)

U.S. Department of Labor news materials are accessible at <http://www.dol.gov>. The Department's [Reasonable Accommodation Resource Center](#) converts Departmental information and documents into alternative formats, which include Braille and large print. For alternative format requests, please contact the Department at (202) 693-7828 (voice) or (800) 877-8339 (federal relay).

U.S. Department of Labor
Employment and Training Administration
Washington, D.C. 20210
Release Number: USDL 22-1789-NAT

Program Contacts:
Kevin Stapleton: (202) 693-3009
Media Contact: (202) 693-4676