



# News Release

Connect with DOL at  
<https://blog.dol.gov>



TRANSMISSION OF MATERIALS IN THIS RELEASE IS EMBARGOED UNTIL  
8:30 A.M. (Eastern) Thursday, April 28, 2022

## UNEMPLOYMENT INSURANCE WEEKLY CLAIMS

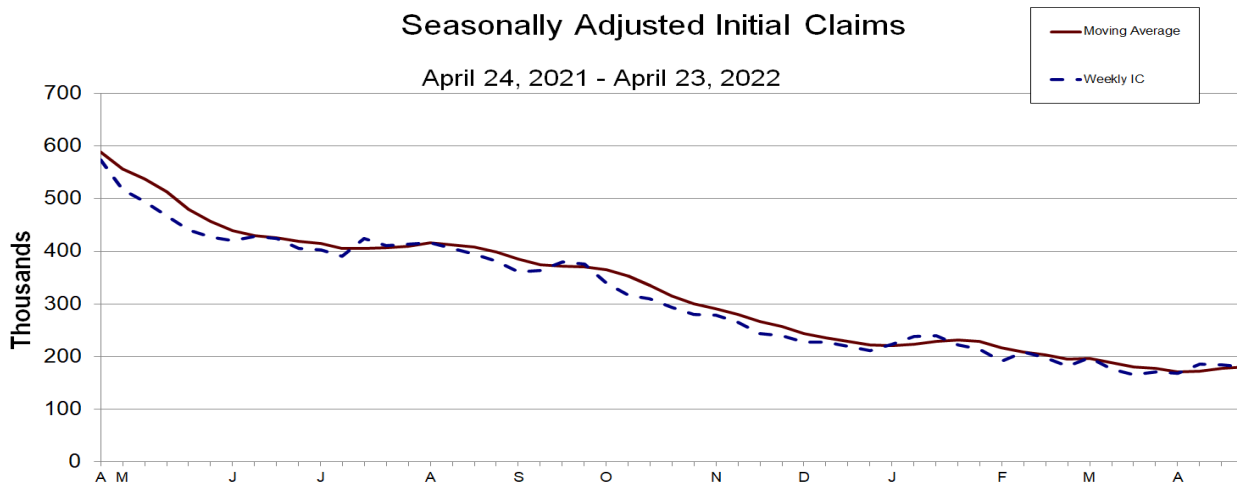
### SEASONALLY ADJUSTED DATA

In the week ending April 23, the advance figure for seasonally adjusted **initial claims** was 180,000, a decrease of 5,000 from the previous week's revised level. The previous week's level was revised up by 1,000 from 184,000 to 185,000. The 4-week moving average was 179,750, an increase of 2,250 from the previous week's revised average. The previous week's average was revised up by 250 from 177,250 to 177,500.

The advance seasonally adjusted **insured unemployment rate** was 1.0 percent for the week ending April 16, unchanged from the previous week's unrevised rate. The advance number for seasonally adjusted **insured unemployment** during the week ending April 16 was 1,408,000, a decrease of 1,000 from the previous week's revised level. This is the lowest level for insured unemployment since February 7, 1970 when it was 1,397,000. The previous week's level was revised down by 8,000 from 1,417,000 to 1,409,000. The 4-week moving average was 1,455,000, a decrease of 24,500 from the previous week's revised average. This is the lowest level for this average since March 14, 1970 when it was 1,435,250. The previous week's average was revised down by 2,250 from 1,481,750 to 1,479,500.

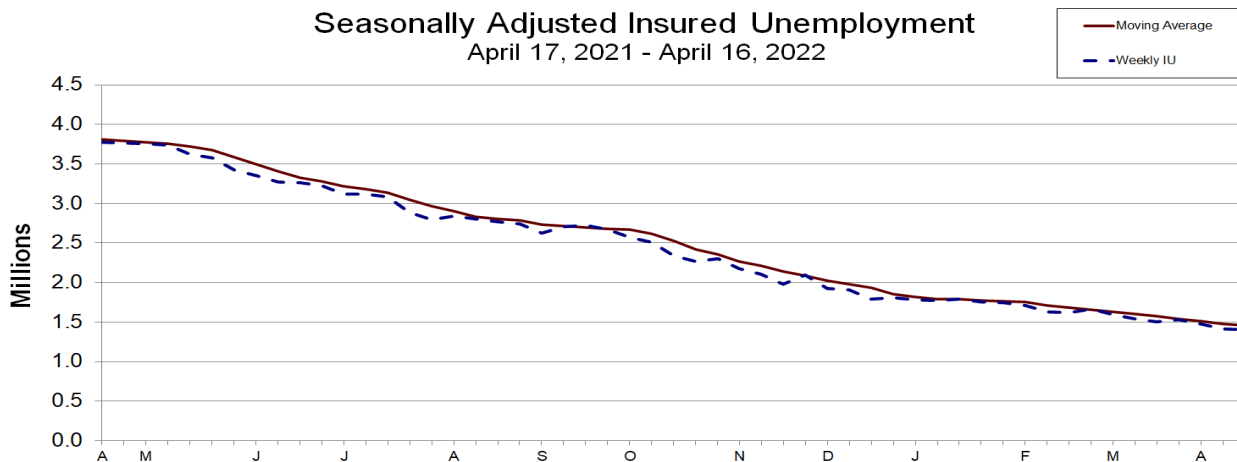
Seasonally Adjusted Initial Claims

April 24, 2021 - April 23, 2022



Seasonally Adjusted Insured Unemployment

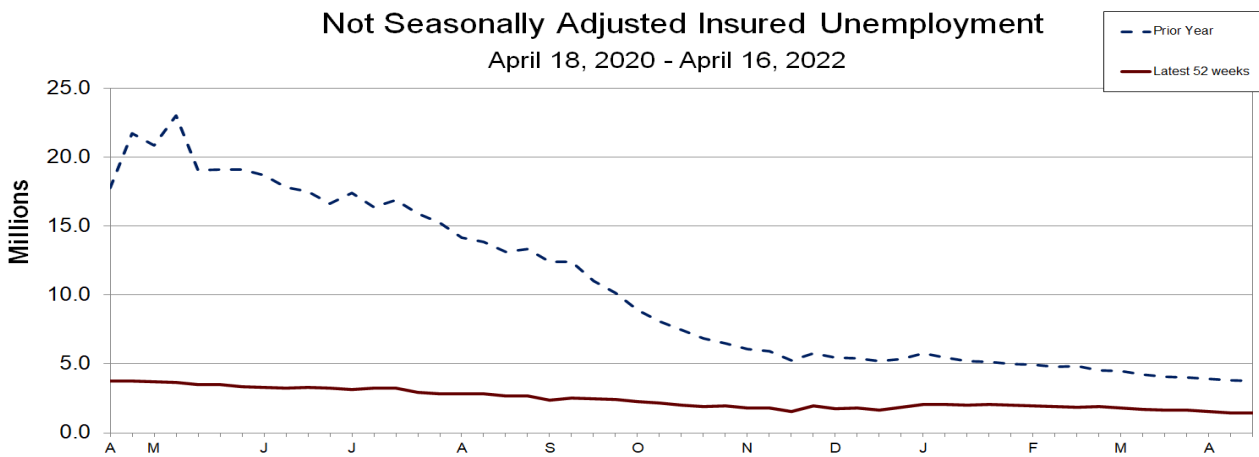
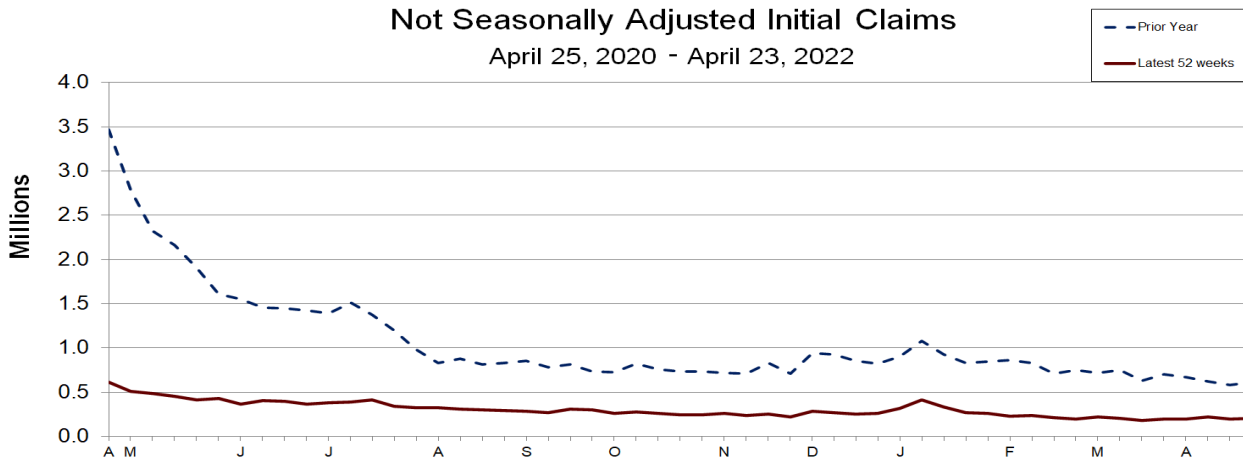
April 17, 2021 - April 16, 2022



**UNADJUSTED DATA**

The advance number of actual initial claims under state programs, unadjusted, totaled 202,983 in the week ending April 23, an increase of 5,005 (or 2.5 percent) from the previous week. The seasonal factors had expected an increase of 10,371 (or 5.2 percent) from the previous week. There were 611,236 initial claims in the comparable week in 2021.

The advance unadjusted insured unemployment rate was 1.0 percent during the week ending April 16, unchanged from the prior week. The advance unadjusted level of insured unemployment in state programs totaled 1,447,505, a decrease of 19,779 (or -1.3 percent) from the preceding week. The seasonal factors had expected a decrease of 18,323 (or -1.2 percent) from the previous week. A year earlier the rate was 2.7 percent and the volume was 3,776,395.



The total number of continued weeks claimed for benefits in all programs for the week ending April 9 was 1,515,902, a decrease of 105,322 from the previous week. There were 16,549,588 weekly claims filed for benefits in all programs in the comparable week in 2021.

During the week ending April 9, Extended Benefits were available in the following state: New Jersey.

Initial claims for UI benefits filed by former Federal civilian employees totaled 503 in the week ending April 16, a decrease of 33 from the prior week. There were 368 initial claims filed by newly discharged veterans, a decrease of 95 from the preceding week.

There were 8,131 continued weeks claimed filed by former Federal civilian employees the week ending April 9, a decrease of 174 from the previous week. Newly discharged veterans claiming benefits totaled 4,328, an increase of 70 from the prior week.

The highest insured unemployment rates in the week ending April 9 were in California (2.2), New Jersey (2.2), Alaska (1.9), Minnesota (1.8), New York (1.6), Rhode Island (1.6), Illinois (1.5), Massachusetts (1.5), Pennsylvania (1.3), and Puerto Rico (1.3).

The largest increases in initial claims for the week ending April 16 were in Connecticut (+1,391), New Jersey (+1,116), Rhode Island (+368), Montana (+340), and Maryland (+147), while the largest decreases were in Missouri (-7,498), Michigan (-3,509), New York (-2,956), Ohio (-2,902), and Texas (-2,330).

---

UNEMPLOYMENT INSURANCE DATA FOR REGULAR STATE PROGRAMS

---

<b>WEEK ENDING</b>	<b>April 23</b>	<b>April 16</b>	<b>Change</b>	<b>April 9</b>	<b>Prior Year<sup>1</sup></b>
Initial Claims (SA)	180,000	185,000	-5,000	186,000	574,000
Initial Claims (NSA)	202,983	197,978	+5,005	224,132	611,236
4-Wk Moving Average (SA)	179,750	177,500	+2,250	172,750	589,000

<b>WEEK ENDING</b>	<b>April 16</b>	<b>April 9</b>	<b>Change</b>	<b>April 2</b>	<b>Prior Year<sup>1</sup></b>
Insured Unemployment (SA)	1,408,000	1,409,000	-1,000	1,474,000	3,776,000
Insured Unemployment (NSA)	1,447,505	1,467,284	-19,779	1,570,280	3,776,395
4-Wk Moving Average (SA)	1,455,000	1,479,500	-24,500	1,512,750	3,811,000
Insured Unemployment Rate (SA) <sup>2</sup>	1.0%	1.0%	0.0	1.1%	2.7%
Insured Unemployment Rate (NSA) <sup>2</sup>	1.0%	1.0%	0.0	1.1%	2.7%

---

INITIAL CLAIMS FILED IN FEDERAL PROGRAMS (UNADJUSTED)<sup>3</sup>

---

<b>WEEK ENDING</b>	<b>April 16</b>	<b>April 9</b>	<b>Change</b>	<b>Prior Year<sup>1</sup></b>
Federal Employees (UCFE)	503	536	-33	1,105
Newly Discharged Veterans (UCX)	368	463	-95	549

---

CONTINUED WEEKS CLAIMED FILED FOR UI BENEFITS IN ALL PROGRAMS (UNADJUSTED)<sup>3</sup>

---

<b>WEEK ENDING</b>	<b>April 9</b>	<b>April 2</b>	<b>Change</b>	<b>Prior Year<sup>1</sup></b>
Regular State	1,463,827	1,566,675	-102,848	3,801,263
Federal Employees	8,131	8,305	-174	15,337
Newly Discharged Veterans	4,328	4,258	+70	7,787
Extended Benefits <sup>4</sup>	25,944	27,516	-1,572	471,216
State Additional Benefits <sup>5</sup>	2,121	2,081	+40	1,634
STC / Workshare <sup>6</sup>	11,551	12,389	-838	83,343
<b>TOTAL<sup>7</sup></b>	<b>1,515,902</b>	<b>1,621,224</b>	<b>-105,322</b>	<b>16,549,588</b>

**FOOTNOTES**

SA - Seasonally Adjusted Data, NSA - Not Seasonally Adjusted Data Continued weeks claimed represent all weeks of benefits claimed during the week being reported, and do not represent weeks claimed by unique individuals.

1. Prior year is comparable to most recent data.
2. Most recent week used covered employment of 140,025,048 as denominator.
3. NOTICE: Ongoing claims for PUA and PEUC are no longer included in this news release. Any ongoing claims for these programs represent activity for periods prior to the programs' expiration on September 6, 2021. Claims activity for these programs will continue to be posted online at: [Weekly Pandemic Program Claims](#)
4. Information on the EB program can be found here: [EB Program information](#)
5. Some states maintain additional benefit programs for those claimants who exhaust regular benefits, and when applicable, extended benefits. Information on states that participate, and the extent of benefits paid, can be found starting on page 4-5 of this link: [Extensions and Special Programs PDF](#)
6. Information on STC/Worksharing can be found starting on page 4-11 of the following link: [Extensions and Special Programs PDF](#)
7. Prior year total includes PUA and PEUC claims.

## Advance State Claims - Not Seasonally Adjusted

STATE	Initial Claims Filed During Week Ended April 23			Insured Unemployment For Week Ended April 16		
	Advance	Prior Wk	Change	Advance	Prior Wk	Change
Alabama	1,902	2,085	-183	2,824	3,567	-743
Alaska	1,053	853	200	5,303	5,371	-68
Arizona	3,427	3,888	-461	13,591	14,145	-554
Arkansas	1,259	1,195	64	5,887	6,846	-959
California	44,217	46,300	-2,083	351,190	363,461	-12,271
Colorado	2,506	2,490	16	19,376	19,053	323
Connecticut	4,783	3,743	1,040	22,042	19,331	2,711
Delaware	666	212	454	3,459	3,053	406
District of Columbia	535	636	-101	3,919	4,040	-121
Florida	5,024	5,668	-644	30,106	32,914	-2,808
Georgia	4,359	3,629	730	27,092	25,540	1,552
Hawaii	1,154	1,027	127	6,298	5,970	328
Idaho	685	819	-134	3,776	4,055	-279
Illinois	8,527	8,081	446	82,954	83,224	-270
Indiana	7,103	5,758	1,345	23,995	23,849	146
Iowa	1,249	1,153	96	9,702	11,669	-1,967
Kansas	861	890	-29	3,938	3,890	48
Kentucky	1,979	1,768	211	8,241	7,856	385
Louisiana	1,443	1,631	-188	8,741	9,667	-926
Maine	644	505	139	5,613	5,978	-365
Maryland	1,938	2,208	-270	14,641	14,166	475
Massachusetts	7,395	3,984	3,411	49,002	51,729	-2,727
Michigan	6,391	8,383	-1,992	54,147	45,643	8,504
Minnesota	2,816	3,165	-349	45,818	46,987	-1,169
Mississippi	888	910	-22	3,499	3,968	-469
Missouri	2,501	2,623	-122	11,605	13,314	-1,709
Montana	758	1,000	-242	4,964	4,722	242
Nebraska	444	516	-72	2,779	2,974	-195
Nevada	2,009	2,107	-98	12,902	13,779	-877
New Hampshire	258	241	17	1,720	2,097	-377
New Jersey	8,452	7,691	761	78,524	80,818	-2,294
New Mexico	688	700	-12	7,969	8,180	-211
New York	16,016	11,195	4,821	138,396	141,173	-2,777
North Carolina	2,495	2,292	203	12,304	12,738	-434
North Dakota	341	268	73	3,614	3,244	370
Ohio	8,159	10,903	-2,744	40,720	44,924	-4,204
Oklahoma	1,657	1,778	-121	10,289	11,419	-1,130
Oregon	3,715	3,544	171	22,172	21,431	741
Pennsylvania	9,116	9,321	-205	71,908	72,393	-485
Puerto Rico	1,163	916	247	11,358	10,686	672
Rhode Island	2,017	1,240	777	6,488	6,944	-456
South Carolina	2,295	1,759	536	9,184	8,761	423
South Dakota	117	95	22	1,284	1,481	-197
Tennessee	1,848	2,159	-311	10,924	11,527	-603
Texas	12,846	13,211	-365	94,377	91,018	3,359
Utah	1,644	1,586	58	5,672	5,097	575
Vermont	656	387	269	2,642	2,750	-108
Virgin Islands	23	25	-2	390	312	78
Virginia	2,023	1,861	162	8,101	7,030	1,071
Washington	4,091	4,526	-435	39,743	39,154	589
West Virginia	613	662	-49	6,271	5,890	381
Wisconsin	3,769	3,804	-35	23,922	25,707	-1,785
Wyoming	465	587	-122	2,129	1,749	380
US Total	202,983	197,978	5,005	1,447,505	1,467,284	-19,779

Note: Advance claims are not directly comparable to claims reported in prior weeks. Advance claims are reported by the state liable for paying the unemployment compensation, whereas previous weeks reported claims reflect claimants by state of residence. In addition, claims reported as "workshare equivalent" in the previous week are added to the advance claims as a proxy for the current week's "workshare equivalent" activity.

Seasonally Adjusted US Weekly UI Claims (in thousands)

Week Ending	Initial Claims	Change from		Insured Unemployment	Change from		IUR
		Prior Week	4-Week Average		Prior Week	4-Week Average	
April 17, 2021	566	-5	610.00	3,776	-3	3,811.00	2.7
April 24, 2021	574	8	589.00	3,767	-9	3,788.00	2.7
May 1, 2021	517	-57	557.00	3,756	-11	3,769.50	2.7
May 8, 2021	494	-23	537.75	3,737	-19	3,759.00	2.7
May 15, 2021	467	-27	513.00	3,618	-119	3,719.50	2.6
May 22, 2021	441	-26	479.75	3,575	-43	3,671.50	2.6
May 29, 2021	427	-14	457.25	3,422	-153	3,588.00	2.5
June 5, 2021	420	-7	438.75	3,352	-70	3,491.75	2.4
June 12, 2021	429	9	429.25	3,271	-81	3,405.00	2.3
June 19, 2021	424	-5	425.00	3,266	-5	3,327.75	2.3
June 26, 2021	405	-19	419.50	3,230	-36	3,279.75	2.3
July 3, 2021	403	-2	415.25	3,116	-114	3,220.75	2.3
July 10, 2021	391	-12	405.75	3,116	0	3,182.00	2.3
July 17, 2021	424	33	405.75	3,082	-34	3,136.00	2.2
July 24, 2021	411	-13	407.25	2,881	-201	3,048.75	2.1
July 31, 2021	414	3	410.00	2,794	-87	2,968.25	2.0
August 7, 2021	416	2	416.25	2,839	45	2,899.00	2.1
August 14, 2021	405	-11	411.50	2,804	-35	2,829.50	2.0
August 21, 2021	395	-10	407.50	2,772	-32	2,802.25	2.0
August 28, 2021	381	-14	399.25	2,740	-32	2,788.75	2.0
September 4, 2021	361	-20	385.50	2,628	-112	2,736.00	1.9
September 11, 2021	363	2	375.00	2,705	77	2,711.25	2.0
September 18, 2021	380	17	371.25	2,720	15	2,698.25	2.0
September 25, 2021	376	-4	370.00	2,674	-46	2,681.75	2.0
October 2, 2021	340	-36	364.75	2,571	-103	2,667.50	1.9
October 9, 2021	317	-23	353.25	2,512	-59	2,619.25	1.9
October 16, 2021	310	-7	335.75	2,334	-178	2,522.75	1.7
October 23, 2021	294	-16	315.25	2,263	-71	2,420.00	1.7
October 30, 2021	280	-14	300.25	2,303	40	2,353.00	1.7
November 6, 2021	279	-1	290.75	2,172	-131	2,268.00	1.6
November 13, 2021	265	-14	279.50	2,100	-72	2,209.50	1.6
November 20, 2021	244	-21	267.00	1,976	-124	2,137.75	1.5
November 27, 2021	240	-4	257.00	2,098	122	2,086.50	1.6
December 4, 2021	228	-12	244.25	1,927	-171	2,025.25	1.4
December 11, 2021	228	0	235.00	1,904	-23	1,976.25	1.4
December 18, 2021	220	-8	229.00	1,793	-111	1,930.50	1.3
December 25, 2021	211	-9	221.75	1,805	12	1,857.25	1.3
January 1, 2022	224	13	220.75	1,778	-27	1,820.00	1.3
January 8, 2022	238	14	223.25	1,776	-2	1,788.00	1.3
January 15, 2022	240	2	228.25	1,787	11	1,786.50	1.3
January 22, 2022	222	-18	231.00	1,757	-30	1,774.50	1.3
January 29, 2022	214	-8	228.50	1,743	-14	1,765.75	1.3
February 5, 2022	191	-23	216.75	1,714	-29	1,750.25	1.2
February 12, 2022	209	18	209.00	1,633	-81	1,711.75	1.2
February 19, 2022	198	-11	203.00	1,623	-10	1,678.25	1.2
February 26, 2022	182	-16	195.00	1,664	41	1,658.50	1.2
March 5, 2022	198	16	196.75	1,594	-70	1,628.50	1.2
March 12, 2022	177	-21	188.75	1,542	-52	1,605.75	1.1
March 19, 2022	166	-11	180.75	1,506	-36	1,576.50	1.1
March 26, 2022	171	5	178.00	1,529	23	1,542.75	1.1
April 2, 2022	168	-3	170.50	1,474	-55	1,512.75	1.1
April 9, 2022	186	18	172.75	1,409	-65	1,479.50	1.0
April 16, 2022	185	-1	177.50	1,408	-1	1,455.00	1.0
April 23, 2022	180	-5	179.75				

## Extended Benefits (EB) Continued Claims - Not Seasonally Adjusted

STATE	EB Claims Filed During Weeks Ended:		
	April 9	April 2	Change
Alabama	0	0	0
Alaska	0	0	0
Arizona	0	1	-1
Arkansas	1	1	0
California	1,170	1,134	36
Colorado	38	15	23
Connecticut	27	54	-27
Delaware	0	0	0
District of Columbia	2	0	2
Florida	47	56	-9
Georgia	0	0	0
Hawaii	0	1	-1
Idaho	0	0	0
Illinois	11	14	-3
Indiana	0	1	-1
Iowa	1	1	0
Kansas	5	0	5
Kentucky	0	0	0
Louisiana	2	1	1
Maine	1	1	0
Maryland	5	5	0
Massachusetts	0	0	0
Michigan	2	23	-21
Minnesota	0	0	0
Mississippi	0	0	0
Missouri	4	4	0
Montana	0	0	0
Nebraska	0	0	0
Nevada	2	4	-2
New Hampshire	1	1	0
New Jersey	24,240	25,765	-1,525
New Mexico	19	0	19
New York	28	90	-62
North Carolina	10	9	1
North Dakota	0	0	0
Ohio	0	0	0
Oklahoma	0	0	0
Oregon	1	3	-2
Pennsylvania	105	113	-8
Puerto Rico	129	124	5
Rhode Island	1	1	0
South Carolina	5	10	-5
South Dakota	0	0	0
Tennessee	4	3	1
Texas	56	50	6
Utah	0	0	0
Vermont	0	0	0
Virgin Islands	0	0	0
Virginia	0	0	0
Washington	0	0	0
West Virginia	1	4	-3
Wisconsin	26	27	-1
Wyoming	0	0	0
US Total	25,944	27,516	-1,572

Note: Information on the EB program can be found here: [EB Program information](#)

INITIAL CLAIMS FILED DURING WEEK ENDED  
APRIL 16

INSURED UNEMPLOYMENT FOR WEEK ENDED  
APRIL 9

STATE NAME	STATE	CHANGE FROM				STATE (%) <sup>2</sup>	CHANGE FROM				ALL PROGRAMS EXCLUDING RAILROAD RETIREMENT	
		LAST WEEK	YEAR AGO	UCFE <sup>1</sup>	UCX <sup>1</sup>		LAST WEEK	YEAR AGO	UCFE <sup>1</sup>	UCX <sup>1</sup>		
Alabama	2,085	-57	-6,898	10	3	3,567	0.2	-201	-15,957	34	21	3,622
Alaska	853	-107	-3,051	4	1	5,371	1.9	-273	-8,744	84	16	5,471
Arizona	3,888	-305	-2,420	1	2	14,145	0.5	832	-37,231	93	29	14,267
Arkansas	1,195	-81	-2,018	4	1	6,846	0.6	88	-11,466	40	9	6,895
California	46,300	-308	-26,575	123	77	363,461	2.2	-2,984	-209,793	2,024	962	366,447
Colorado	2,490	-114	-2,812	5	8	19,053	0.7	494	-24,994	200	118	19,371
Connecticut	3,743	1,391	-3,480	3	4	19,331	1.2	-2,135	-63,129	35	48	19,414
Delaware	212	-87	-3,630	3	2	3,053	0.7	-254	-7,510	17	3	3,073
District of Columbia	636	-133	-2,632	7	0	4,040	0.8	-186	-16,471	115	1	4,156
Florida	5,668	-951	-13,170	17	26	32,914	0.4	421	-90,643	172	102	33,188
Georgia	3,629	-524	-28,752	23	12	25,540	0.6	-30,075	-118,358	222	111	25,873
Hawaii	1,027	-358	-2,571	2	9	5,970	1.1	-418	-11,641	48	73	6,091
Idaho	819	37	-3,665	1	0	4,055	0.5	-443	-6,086	76	7	4,138
Illinois	8,081	-1,418	-7,167	11	5	83,224	1.5	-9,612	-156,603	515	132	83,871
Indiana	5,758	-818	-8,268	16	8	23,849	0.9	2,087	-34,484	75	42	23,966
Iowa	1,153	-118	-5,828	4	1	11,669	0.8	-2,224	-21,281	30	7	11,706
Kansas	890	-221	-1,099	3	0	3,890	0.3	-300	-4,907	25	13	3,928
Kentucky	1,768	-41	-4,190	3	0	7,856	0.4	-1,021	-7,210	61	46	7,963
Louisiana	1,631	-416	-7,198	1	2	9,667	0.5	-344	-43,031	49	14	9,730
Maine	505	-148	-1,155	0	0	5,978	1.0	-448	-8,646	26	8	6,012
Maryland	2,208	147	-5,347	12	4	14,166	0.6	-2,067	-32,626	130	45	14,341
Massachusetts	3,984	-197	-9,597	8	8	51,729	1.5	-5,256	-51,861	145	63	51,937
Michigan	8,383	-3,509	-14,387	6	5	45,643	1.1	-9,429	-57,078	132	64	45,839
Minnesota	3,165	33	-2,165	5	5	46,987	1.8	-4,383	-46,888	94	67	47,148
Mississippi	910	-241	-3,088	3	1	3,968	0.4	-159	-24,039	67	15	4,050
Missouri	2,623	-7,498	-8,638	5	1	13,314	0.5	1,150	-37,229	59	19	13,392
Montana	1,000	340	-846	4	1	4,722	1.0	-438	-6,333	262	12	4,996
Nebraska	516	-67	-1,003	0	0	2,974	0.3	-265	-5,455	9	7	2,990
Nevada	2,107	-324	-8,721	8	2	13,779	1.1	246	-61,406	112	43	13,934
New Hampshire	241	-7	-1,542	0	1	2,097	0.3	-145	-18,371	7	3	2,107
New Jersey	7,691	1,116	-2,845	18	14	80,818	2.2	-4,285	-43,089	282	180	81,280
New Mexico	700	-215	-3,475	3	0	8,180	1.1	400	-19,925	129	23	8,332
New York	11,195	-2,956	-30,460	18	17	141,173	1.6	-8,089	-259,916	384	232	141,789
North Carolina	2,292	-419	-6,419	4	0	12,738	0.3	-664	-34,345	77	89	12,904
North Dakota	268	22	-1,526	3	2	3,244	0.8	-613	-2,735	10	1	3,255
Ohio	10,903	-2,902	-11,458	5	7	44,924	0.9	-5,639	-83,343	58	106	45,088
Oklahoma	1,778	-158	-14,978	9	4	11,419	0.8	-446	-25,259	62	46	11,527
Oregon	3,544	138	-3,782	19	6	21,431	1.2	-246	-34,711	375	38	21,844
Pennsylvania	9,321	-1,048	-13,035	13	10	72,393	1.3	-8,790	-138,125	253	118	72,764
Puerto Rico	916	50	-1,253	4	2	10,686	1.3	-245	-15,000	169	93	10,948
Rhode Island	1,240	368	-4,426	2	2	6,944	1.6	-660	-10,842	31	28	7,003
South Carolina	1,759	-344	-3,294	2	3	8,761	0.4	-33	-31,049	34	39	8,834
South Dakota	95	-38	-240	11	0	1,481	0.4	-289	-1,613	35	2	1,518
Tennessee	2,159	-224	-11,741	6	4	11,527	0.3	-698	-37,217	33	20	11,580
Texas	13,211	-2,330	-33,305	61	78	91,018	0.8	269	-192,636	648	829	92,495
Utah	1,586	42	-6,826	13	0	5,097	0.3	-1,188	-6,806	98	17	5,212
Vermont	387	-37	-2,154	0	0	2,750	1.0	-198	-8,844	3	0	2,753
Virgin Islands	25	-7	-168	0	0	312	0.9	-208	-854	2	0	314
Virginia	1,861	-72	-11,890	1	1	7,030	0.2	59	-48,243	57	60	7,147
Washington	4,526	-177	-9,044	13	27	39,154	1.2	494	-44,442	258	271	39,683
West Virginia	662	-138	-4,719	1	1	5,890	0.9	-353	-11,523	45	22	5,957
Wisconsin	3,804	-860	-15,052	3	1	25,707	0.9	-3,744	-69,110	79	10	25,796
Wyoming	587	135	-1,416	2	0	1,749	0.7	-88	-2,202	51	4	1,804
Totals	197,978	-26,154	-385,419	503	368	1,467,284	1.0	-102,996	-2,361,300	8,131	4,328	1,479,743

Figures appearing in columns showing over-the-week changes reflect all revisions in data for prior week submitted by state agencies.

1. The Unemployment Compensation program for Federal Employees (UCFE) and the Unemployment Compensation for Ex-servicemembers (UCX) exclude claims filed jointly under other programs to avoid duplication.
2. Rate is not seasonally adjusted. The source of U.S. total covered employment is BLS.



---

**UNADJUSTED INITIAL CLAIMS FOR WEEK ENDED APRIL 16, 2022**

---

**STATES WITH AN INCREASE OF MORE THAN 1,000**

---

<b>State</b>	<b>Change</b>	<b>State Supplied Comment</b>
CT	+1,391	No comment.
NJ	+1,116	No comment.

**STATES WITH A DECREASE OF MORE THAN 1,000**

---

<b>State</b>	<b>Change</b>	<b>State Supplied Comment</b>
MO	-7,498	Fewer layoffs in the manufacturing and administrative and support and waste management and remediation services industries.
MI	-3,509	Fewer layoffs in the automobile industry.
NY	-2,956	Fewer layoffs in the construction, retail trade, and health care and social assistance industries.
OH	-2,902	No comment.
TX	-2,330	No comment.
IL	-1,418	No comment.
PA	-1,048	Fewer layoffs in the construction, administrative and support and waste management and remediation services, professional, scientific, and technical services industries.

## TECHNICAL NOTES

This news release presents the weekly unemployment insurance (UI) claims reported by each state's unemployment insurance program offices. These claims may be used for monitoring workload volume, assessing state program operations and for assessing labor market conditions. States initially report claims directly taken by the state liable for the benefit payments, regardless of where the claimant who filed the claim resided. These are the basis for the advance initial claims and continued claims reported each week. These data come from ETA 538, Advance Weekly Initial and Continued Claims Report. The following week initial claims and continued claims are revised based on a second reporting by states that reflect the claimants by state of residence. These data come from the ETA 539, Weekly Claims and Extended Benefits Trigger Data Report.

### A. Initial Claims

An initial claim is a claim filed by an unemployed individual after a separation from an employer. The claimant requests a determination of basic eligibility for the UI program. When an initial claim is filed with a state, certain programmatic activities take place and these result in activity counts including the count of initial claims. The count of U.S. initial claims for unemployment insurance is a leading economic indicator because it is an indication of emerging labor market conditions in the country. However, these are weekly administrative data which are difficult to seasonally adjust, making the series subject to some volatility.

### B. Continued Weeks Claimed

A person who has already filed an initial claim and who has experienced a week of unemployment then files a continued claim to claim benefits for that week of unemployment. On a weekly basis, continued claims are also referred to as insured unemployment, as continued claims reflect a good approximation of the current number of insured unemployed workers filing for UI benefits. The count of U.S. continued weeks claimed is also a good indicator of labor market conditions. While continued claims are not a leading indicator (they roughly coincide with economic cycles at their peaks and lag at cycle troughs), they provide confirming evidence of the direction of the U.S. economy.

### C. Seasonal Adjustments and Annual Revisions

Over the course of a year, the weekly changes in the levels of initial claims and continued claims undergo regularly occurring fluctuations. These fluctuations may result from seasonal changes in weather, major holidays, the opening and closing of schools, or other similar events. Because these seasonal events follow a more or less regular pattern each year, their influence on the level of a series can be tempered by adjusting for regular seasonal variation. These adjustments make trend and cycle developments easier to spot. At the beginning of each calendar year, the Bureau of Labor Statistics provides the Employment and Training Administration (ETA) with a set of seasonal factors to apply to the unadjusted data during that year. Concurrent with the implementation and release of the new seasonal factors, ETA incorporates revisions to the UI claims historical series caused by updates to the unadjusted data. For further questions on seasonal adjustment methodology, please see the [official release page for the UI claims seasonal adjustment factors](#) or contact BLS directly through the [Local Area Unemployment Statistics web contact form](#).

[Weekly Claims Archives](#)  
[Weekly Claims Data](#)

U.S. Department of Labor news materials are accessible at <http://www.dol.gov>. The Department's [Reasonable Accommodation Resource Center](#) converts Departmental information and documents into alternative formats, which include Braille and large print. For alternative format requests, please contact the Department at (202) 693-7828 (voice) or (800) 877-8339 (federal relay).

U.S. Department of Labor  
Employment and Training Administration  
Washington, D.C. 20210  
Release Number: USDL 22-769-NAT

Program Contacts:  
Kevin Stapleton: (202) 693-3009  
Media Contact: (202) 693-4676