



# News Release

Connect with DOL at <https://blog.dol.gov>



TRANSMISSION OF MATERIALS IN THIS RELEASE IS EMBARGOED UNTIL  
8:30 A.M. (Eastern) Thursday, February 17, 2022

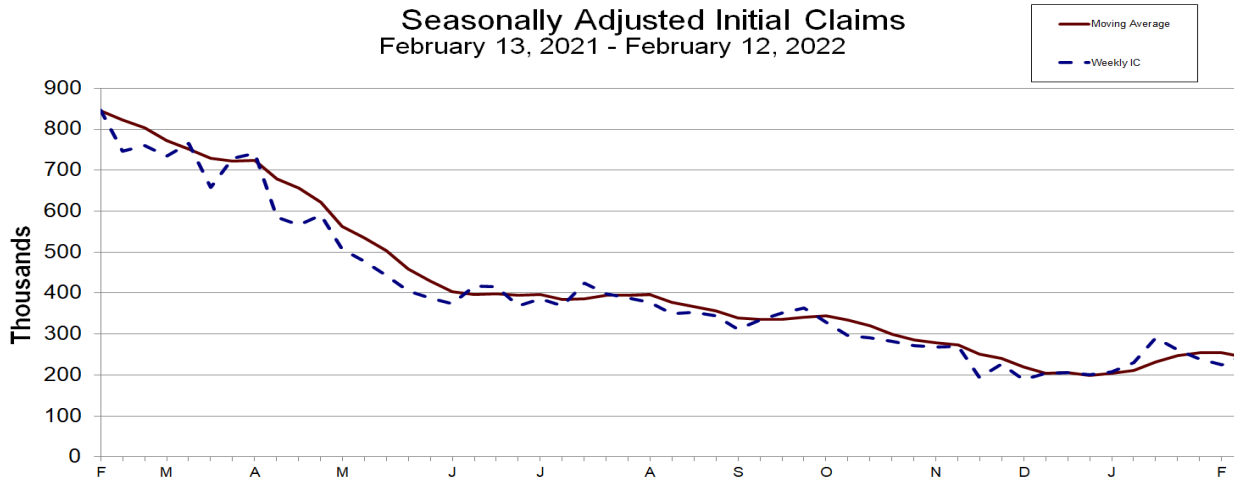
## UNEMPLOYMENT INSURANCE WEEKLY CLAIMS

### SEASONALLY ADJUSTED DATA

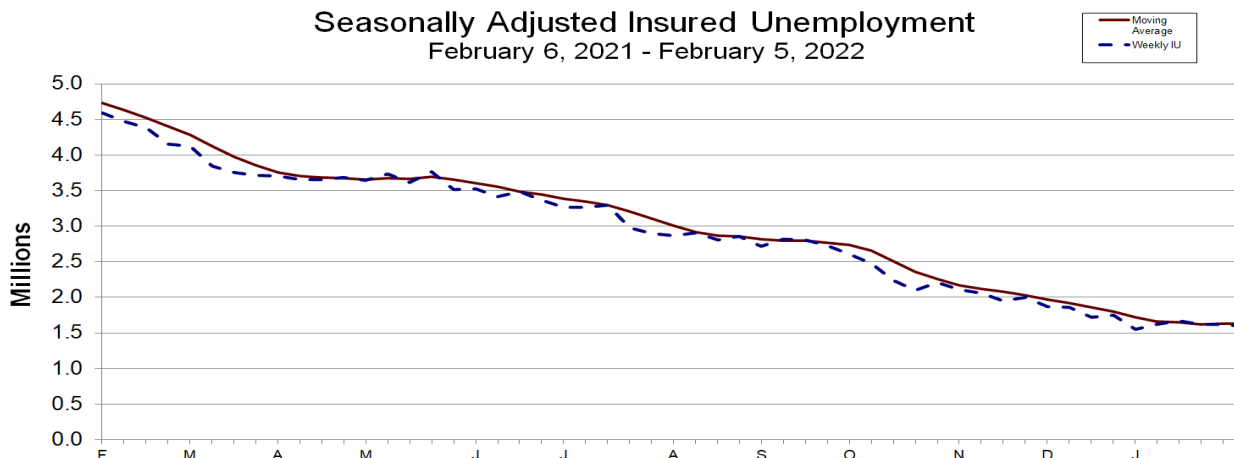
In the week ending February 12, the advance figure for seasonally adjusted **initial claims** was 248,000, an increase of 23,000 from the previous week's revised level. The previous week's level was revised up by 2,000 from 223,000 to 225,000. The 4-week moving average was 243,250, a decrease of 10,500 from the previous week's revised average. The previous week's average was revised up by 500 from 253,250 to 253,750.

The advance seasonally adjusted **insured unemployment rate** was 1.2 percent for the week ending February 5, unchanged from the previous week's unrevised rate. The advance number for seasonally adjusted **insured unemployment** during the week ending February 5 was 1,593,000, a decrease of 26,000 from the previous week's revised level. The previous week's level was revised down by 2,000 from 1,621,000 to 1,619,000. The 4-week moving average was 1,626,250, a decrease of 7,750 from the previous week's revised average. The previous week's average was revised down by 500 from 1,634,500 to 1,634,000.

Seasonally Adjusted Initial Claims  
February 13, 2021 - February 12, 2022



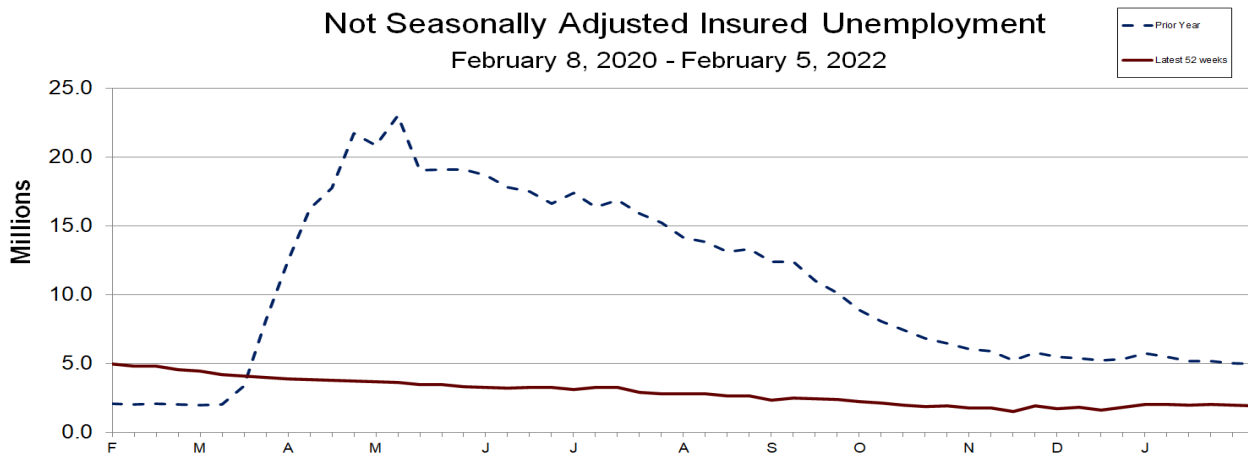
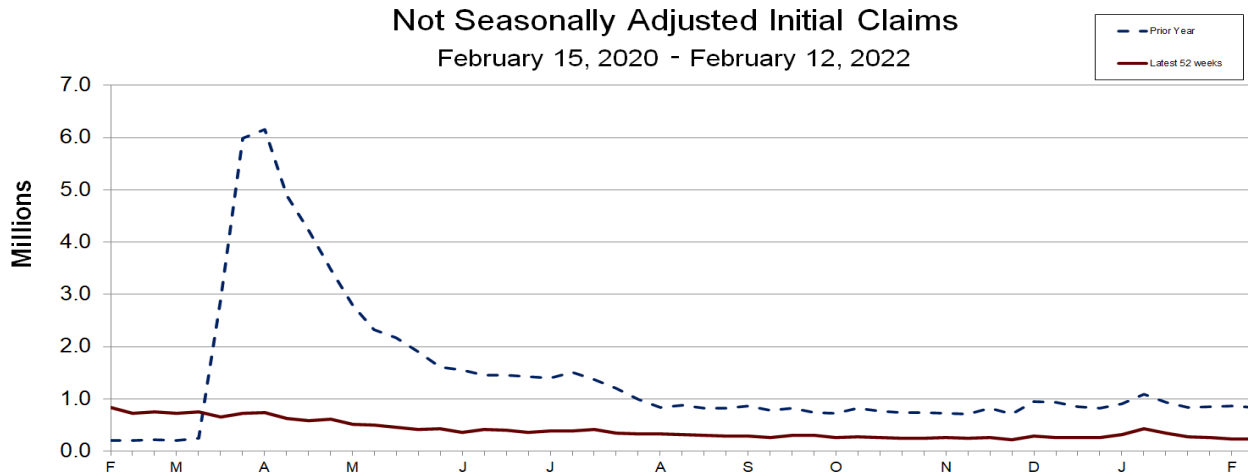
Seasonally Adjusted Insured Unemployment  
February 6, 2021 - February 5, 2022



**UNADJUSTED DATA**

The advance number of actual initial claims under state programs, unadjusted, totaled 238,482 in the week ending February 12, an increase of 7,742 (or 3.4 percent) from the previous week. The seasonal factors had expected a decrease of 14,676 (or -6.4 percent) from the previous week. There were 835,045 initial claims in the comparable week in 2021.

The advance unadjusted insured unemployment rate was 1.4 percent during the week ending February 5, unchanged from the prior week. The advance unadjusted level of insured unemployment in state programs totaled 1,975,407, a decrease of 24,033 (or -1.2 percent) from the preceding week. The seasonal factors had expected an increase of 1,997 (or 0.1 percent) from the previous week. A year earlier the rate was 3.5 percent and the volume was 4,971,328.



The total number of continued weeks claimed for benefits in all programs for the week ending January 29 was 2,063,567, a decrease of 36,295 from the previous week. There were 18,906,377 weekly claims filed for benefits in all programs in the comparable week in 2021.

During the week ending January 29, Extended Benefits were available in the following 2 states: New Jersey, and New Mexico.

Initial claims for UI benefits filed by former Federal civilian employees totaled 624 in the week ending February 5, a decrease of 27 from the prior week. There were 372 initial claims filed by newly discharged veterans, a decrease of 33 from the preceding week.

There were 10,899 continued weeks claimed filed by former Federal civilian employees the week ending January 29, an increase of 371 from the previous week. Newly discharged veterans claiming benefits totaled 4,592, a decrease of 496 from the prior week.

The highest insured unemployment rates in the week ending January 29 were in Alaska (2.7), California (2.7), New Jersey (2.6), Minnesota (2.5), Rhode Island (2.4), Massachusetts (2.3), New York (2.3), and Illinois (2.2).

The largest increases in initial claims for the week ending February 5 were in Michigan (+2,884), New Jersey (+406), Kansas (+309), Delaware (+235), and Maryland (+148), while the largest decreases were in California (-4,247), Kentucky (-3,962), Tennessee (-2,916), Illinois (-2,303), and Indiana (-1,760).

---

UNEMPLOYMENT INSURANCE DATA FOR REGULAR STATE PROGRAMS

---

| <b>WEEK ENDING</b>       | <b>February 12</b> | <b>February 5</b> | <b>Change</b> | <b>January 29</b> | <b>Prior Year<sup>1</sup></b> |
|--------------------------|--------------------|-------------------|---------------|-------------------|-------------------------------|
| Initial Claims (SA)      | 248,000            | 225,000           | +23,000       | 239,000           | 847,000                       |
| Initial Claims (NSA)     | 238,482            | 230,740           | +7,742        | 257,583           | 835,045                       |
| 4-Wk Moving Average (SA) | 243,250            | 253,750           | -10,500       | 255,250           | 845,750                       |

| <b>WEEK ENDING</b>                           | <b>February 5</b> | <b>January 29</b> | <b>Change</b> | <b>January 22</b> | <b>Prior Year<sup>1</sup></b> |
|--|-------------------|-------------------|---------------|-------------------|-------------------------------|
| Insured Unemployment (SA)                    | 1,593,000         | 1,619,000         | -26,000       | 1,621,000         | 4,592,000                     |
| Insured Unemployment (NSA)                   | 1,975,407         | 1,999,440         | -24,033       | 2,034,536         | 4,971,328                     |
| 4-Wk Moving Average (SA)                     | 1,626,250         | 1,634,000         | -7,750        | 1,618,000         | 4,729,000                     |
| Insured Unemployment Rate (SA) <sup>2</sup>  | 1.2%              | 1.2%              | 0.0           | 1.2%              | 3.2%                          |
| Insured Unemployment Rate (NSA) <sup>2</sup> | 1.4%              | 1.4%              | 0.0           | 1.5%              | 3.5%                          |

---

INITIAL CLAIMS FILED IN FEDERAL PROGRAMS (UNADJUSTED)<sup>3</sup>

---

| <b>WEEK ENDING</b>              | <b>February 5</b> | <b>January 29</b> | <b>Change</b> | <b>Prior Year<sup>1</sup></b> |
|---------------------------------|-------------------|-------------------|---------------|-------------------------------|
| Federal Employees (UCFE)        | 624               | 651               | -27           | 1,660                         |
| Newly Discharged Veterans (UCX) | 372               | 405               | -33           | 934                           |

---

CONTINUED WEEKS CLAIMED FILED FOR UI BENEFITS IN ALL PROGRAMS (UNADJUSTED)<sup>3</sup>

---

| <b>WEEK ENDING</b>                     | <b>January 29</b> | <b>January 22</b> | <b>Change</b>  | <b>Prior Year<sup>1</sup></b> |
|--|-------------------|-------------------|----------------|-------------------------------|
| Regular State                          | 1,994,737         | 2,029,981         | -35,244        | 5,003,180                     |
| Federal Employees                      | 10,899            | 10,528            | +371           | 19,429                        |
| Newly Discharged Veterans              | 4,592             | 5,088             | -496           | 8,329                         |
| Extended Benefits <sup>4</sup>         | 36,029            | 36,539            | -510           | 1,456,461                     |
| State Additional Benefits <sup>5</sup> | 2,197             | 2,251             | -54            | 1,799                         |
| STC / Workshare <sup>6</sup>           | 15,113            | 15,475            | -362           | 104,342                       |
| <b>TOTAL<sup>7</sup></b>               | <b>2,063,567</b>  | <b>2,099,862</b>  | <b>-36,295</b> | <b>18,906,377</b>             |

**FOOTNOTES**

SA - Seasonally Adjusted Data, NSA - Not Seasonally Adjusted Data Continued weeks claimed represent all weeks of benefits claimed during the week being reported, and do not represent weeks claimed by unique individuals.

1. Prior year is comparable to most recent data.
2. Most recent week used covered employment of 138,088,262 as denominator.
3. NOTICE: Ongoing claims for PUA and PEUC are no longer included in this news release. Any ongoing claims for these programs represent activity for periods prior to the programs' expiration on September 6, 2021. Claims activity for these programs will continue to be posted online at: [Weekly Pandemic Program Claims](#)
4. Information on the EB program can be found here: [EB Program information](#)
5. Some states maintain additional benefit programs for those claimants who exhaust regular benefits, and when applicable, extended benefits. Information on states that participate, and the extent of benefits paid, can be found starting on page 4-5 of this link: [Extensions and Special Programs PDF](#)
6. Information on STC/Worksharing can be found starting on page 4-11 of the following link: [Extensions and Special Programs PDF](#)
7. Prior year total includes PUA and PEUC claims.

## Advance State Claims - Not Seasonally Adjusted

| STATE                | Initial Claims Filed During Week Ended February 12 |          |        | Insured Unemployment For Week Ended February 5 |           |         |
|----------------------|--|----------|--------|--|-----------|---------|
|                      | Advance  | Prior Wk | Change | Advance  | Prior Wk  | Change  |
| Alabama              | 2,057  | 2,495    | -438   | 3,618  | 5,120     | -1,502  |
| Alaska               | 1,183  | 1,099    | 84     | 7,363  | 7,708     | -345    |
| Arizona              | 2,426  | 2,889    | -463   | 10,940   | 13,150    | -2,210  |
| Arkansas             | 1,120  | 755      | 365    | 9,765  | 5,749     | 4,016   |
| California           | 47,143   | 47,354   | -211   | 447,653  | 434,688   | 12,965  |
| Colorado             | 2,022  | 2,212    | -190   | 19,169   | 18,996    | 173     |
| Connecticut          | 2,231  | 2,988    | -757   | 30,263   | 31,059    | -796    |
| Delaware             | 354  | 650      | -296   | 5,528  | 4,769     | 759     |
| District of Columbia | 701  | 597      | 104    | 5,288  | 4,830     | 458     |
| Florida              | 5,734  | 5,925    | -191   | 37,287   | 43,603    | -6,316  |
| Georgia              | 5,575  | 5,968    | -393   | 36,732   | 54,914    | -18,182 |
| Hawaii               | 1,495  | 1,479    | 16     | 8,677  | 8,671     | 6       |
| Idaho                | 1,091  | 1,222    | -131   | 8,374  | 8,953     | -579    |
| Illinois             | 9,432  | 8,431    | 1,001  | 135,868  | 119,355   | 16,513  |
| Indiana              | 5,519  | 5,972    | -453   | 32,244   | 32,063    | 181     |
| Iowa                 | 1,847  | 2,018    | -171   | 23,735   | 23,749    | -14     |
| Kansas               | 2,159  | 1,829    | 330    | 8,014  | 7,319     | 695     |
| Kentucky             | 5,978  | 1,443    | 4,535  | 12,982   | 14,731    | -1,749  |
| Louisiana            | 1,465  | 1,720    | -255   | 13,471   | 15,008    | -1,537  |
| Maine                | 745  | 671      | 74     | 8,183  | 8,176     | 7       |
| Maryland             | 2,434  | 3,051    | -617   | 24,629   | 24,705    | -76     |
| Massachusetts        | 5,201  | 5,988    | -787   | 75,733   | 76,775    | -1,042  |
| Michigan             | 14,329   | 13,795   | 534    | 65,254   | 67,405    | -2,151  |
| Minnesota            | 3,951  | 4,413    | -462   | 69,481   | 66,536    | 2,945   |
| Mississippi          | 852  | 1,049    | -197   | 4,545  | 5,380     | -835    |
| Missouri             | 10,766   | 3,636    | 7,130  | 20,184   | 20,871    | -687    |
| Montana              | 769  | 881      | -112   | 9,242  | 8,863     | 379     |
| Nebraska             | 696  | 745      | -49    | 5,841  | 5,828     | 13      |
| Nevada               | 2,431  | 2,329    | 102    | 17,406   | 19,291    | -1,885  |
| New Hampshire        | 351  | 387      | -36    | 2,699  | 3,066     | -367    |
| New Jersey           | 8,455  | 9,528    | -1,073 | 95,943   | 96,672    | -729    |
| New Mexico           | 656  | 673      | -17    | 10,049   | 10,183    | -134    |
| New York             | 16,295   | 16,680   | -385   | 196,419  | 198,676   | -2,257  |
| North Carolina       | 2,942  | 3,007    | -65    | 14,603   | 15,634    | -1,031  |
| North Dakota         | 374  | 419      | -45    | 6,500  | 6,077     | 423     |
| Ohio                 | 15,029   | 9,727    | 5,302  | 58,783   | 57,473    | 1,310   |
| Oklahoma             | 1,512  | 1,719    | -207   | 11,340   | 12,689    | -1,349  |
| Oregon               | 3,803  | 4,277    | -474   | 29,295   | 30,096    | -801    |
| Pennsylvania         | 10,431   | 12,199   | -1,768 | 97,259   | 107,683   | -10,424 |
| Puerto Rico          | 1,073  | 1,243    | -170   | 13,814   | 16,903    | -3,089  |
| Rhode Island         | 1,026  | 849      | 177    | 13,818   | 10,669    | 3,149   |
| South Carolina       | 1,042  | 1,585    | -543   | 11,101   | 12,352    | -1,251  |
| South Dakota         | 151  | 207      | -56    | 2,772  | 2,835     | -63     |
| Tennessee            | 4,578  | 2,938    | 1,640  | 17,889   | 19,652    | -1,763  |
| Texas                | 13,581   | 14,424   | -843   | 102,509  | 107,474   | -4,965  |
| Utah                 | 824  | 933      | -109   | 9,154  | 9,572     | -418    |
| Vermont              | 396  | 427      | -31    | 4,271  | 4,131     | 140     |
| Virgin Islands       | 24   | 75       | -51    | 846  | 714       | 132     |
| Virginia             | 2,164  | 1,995    | 169    | 8,146  | 7,180     | 966     |
| Washington           | 4,745  | 4,974    | -229   | 55,338   | 53,665    | 1,673   |
| West Virginia        | 1,061  | 1,498    | -437   | 10,960   | 12,198    | -1,238  |
| Wisconsin            | 5,839  | 6,871    | -1,032 | 41,386   | 42,881    | -1,495  |
| Wyoming              | 424  | 501      | -77    | 3,044  | 2,700     | 344     |
| US Total             | 238,482  | 230,740  | 7,742  | 1,975,407                                      | 1,999,440 | -24,033 |

Note: Advance claims are not directly comparable to claims reported in prior weeks. Advance claims are reported by the state liable for paying the unemployment compensation, whereas previous weeks reported claims reflect claimants by state of residence. In addition, claims reported as "workshare equivalent" in the previous week are added to the advance claims as a proxy for the current week's "workshare equivalent" activity.

Seasonally Adjusted US Weekly UI Claims (in thousands)

| Week Ending        | Initial Claims | Change from |                | Insured Unemployment | Change from |                | IUR |
|--------------------|----------------|-------------|----------------|----------------------|-------------|----------------|-----|
|                    |                | Prior Week  | 4-Week Average |                      | Prior Week  | 4-Week Average |     |
| February 6, 2021   | 863            | 26          | 855.50         | 4,592                | -63         | 4,729.00       | 3.2 |
| February 13, 2021  | 847            | -16         | 845.75         | 4,469                | -123        | 4,626.75       | 3.1 |
| February 20, 2021  | 747            | -100        | 823.50         | 4,383                | -86         | 4,524.75       | 3.1 |
| February 27, 2021  | 761            | 14          | 804.50         | 4,157                | -226        | 4,400.25       | 2.9 |
| March 6, 2021      | 734            | -27         | 772.25         | 4,123                | -34         | 4,283.00       | 2.9 |
| March 13, 2021     | 765            | 31          | 751.75         | 3,841                | -282        | 4,126.00       | 2.7 |
| March 20, 2021     | 658            | -107        | 729.50         | 3,753                | -88         | 3,968.50       | 2.6 |
| March 27, 2021     | 729            | 71          | 721.50         | 3,717                | -36         | 3,858.50       | 2.6 |
| April 3, 2021      | 742            | 13          | 723.50         | 3,708                | -9          | 3,754.75       | 2.7 |
| April 10, 2021     | 586            | -156        | 678.75         | 3,652                | -56         | 3,707.50       | 2.6 |
| April 17, 2021     | 566            | -20         | 655.75         | 3,653                | 1           | 3,682.50       | 2.6 |
| April 24, 2021     | 590            | 24          | 621.00         | 3,680                | 27          | 3,673.25       | 2.6 |
| May 1, 2021        | 507            | -83         | 562.25         | 3,640                | -40         | 3,656.25       | 2.6 |
| May 8, 2021        | 478            | -29         | 535.25         | 3,738                | 98          | 3,677.75       | 2.7 |
| May 15, 2021       | 444            | -34         | 504.75         | 3,611                | -127        | 3,667.25       | 2.6 |
| May 22, 2021       | 405            | -39         | 458.50         | 3,769                | 158         | 3,689.50       | 2.7 |
| May 29, 2021       | 388            | -17         | 428.75         | 3,517                | -252        | 3,658.75       | 2.5 |
| June 5, 2021       | 374            | -14         | 402.75         | 3,528                | 11          | 3,606.25       | 2.5 |
| June 12, 2021      | 418            | 44          | 396.25         | 3,412                | -116        | 3,556.50       | 2.5 |
| June 19, 2021      | 416            | -2          | 399.00         | 3,484                | 72          | 3,485.25       | 2.5 |
| June 26, 2021      | 368            | -48         | 394.00         | 3,367                | -117        | 3,447.75       | 2.4 |
| July 3, 2021       | 386            | 18          | 397.00         | 3,265                | -102        | 3,382.00       | 2.4 |
| July 10, 2021      | 368            | -18         | 384.50         | 3,262                | -3          | 3,344.50       | 2.4 |
| July 17, 2021      | 424            | 56          | 386.50         | 3,296                | 34          | 3,297.50       | 2.4 |
| July 24, 2021      | 399            | -25         | 394.25         | 2,980                | -316        | 3,200.75       | 2.2 |
| July 31, 2021      | 387            | -12         | 394.50         | 2,899                | -81         | 3,109.25       | 2.1 |
| August 7, 2021     | 377            | -10         | 396.75         | 2,865                | -34         | 3,010.00       | 2.1 |
| August 14, 2021    | 349            | -28         | 378.00         | 2,908                | 43          | 2,913.00       | 2.1 |
| August 21, 2021    | 354            | 5           | 366.75         | 2,805                | -103        | 2,869.25       | 2.0 |
| August 28, 2021    | 345            | -9          | 356.25         | 2,852                | 47          | 2,857.50       | 2.1 |
| September 4, 2021  | 312            | -33         | 340.00         | 2,715                | -137        | 2,820.00       | 2.0 |
| September 11, 2021 | 335            | 23          | 336.50         | 2,820                | 105         | 2,798.00       | 2.1 |
| September 18, 2021 | 351            | 16          | 335.75         | 2,811                | -9          | 2,799.50       | 2.1 |
| September 25, 2021 | 364            | 13          | 340.50         | 2,727                | -84         | 2,768.25       | 2.0 |
| October 2, 2021    | 329            | -35         | 344.75         | 2,603                | -124        | 2,740.25       | 1.9 |
| October 9, 2021    | 296            | -33         | 335.00         | 2,480                | -123        | 2,655.25       | 1.8 |
| October 16, 2021   | 291            | -5          | 320.00         | 2,239                | -241        | 2,512.25       | 1.7 |
| October 23, 2021   | 283            | -8          | 299.75         | 2,101                | -138        | 2,355.75       | 1.6 |
| October 30, 2021   | 271            | -12         | 285.25         | 2,209                | 108         | 2,257.25       | 1.6 |
| November 6, 2021   | 269            | -2          | 278.50         | 2,109                | -100        | 2,164.50       | 1.6 |
| November 13, 2021  | 270            | 1           | 273.25         | 2,055                | -54         | 2,118.50       | 1.5 |
| November 20, 2021  | 194            | -76         | 251.00         | 1,954                | -101        | 2,081.75       | 1.4 |
| November 27, 2021  | 227            | 33          | 240.00         | 1,999                | 45          | 2,029.25       | 1.5 |
| December 4, 2021   | 188            | -39         | 219.75         | 1,867                | -132        | 1,968.75       | 1.4 |
| December 11, 2021  | 205            | 17          | 203.50         | 1,856                | -11         | 1,919.00       | 1.4 |
| December 18, 2021  | 206            | 1           | 206.50         | 1,718                | -138        | 1,860.00       | 1.3 |
| December 25, 2021  | 200            | -6          | 199.75         | 1,753                | 35          | 1,798.50       | 1.3 |
| January 1, 2022    | 207            | 7           | 204.50         | 1,555                | -198        | 1,720.50       | 1.1 |
| January 8, 2022    | 231            | 24          | 211.00         | 1,624                | 69          | 1,662.50       | 1.2 |
| January 15, 2022   | 290            | 59          | 232.00         | 1,672                | 48          | 1,651.00       | 1.2 |
| January 22, 2022   | 261            | -29         | 247.25         | 1,621                | -51         | 1,618.00       | 1.2 |
| January 29, 2022   | 239            | -22         | 255.25         | 1,619                | -2          | 1,634.00       | 1.2 |
| February 5, 2022   | 225            | -14         | 253.75         | 1,593                | -26         | 1,626.25       | 1.2 |
| February 12, 2022  | 248            | 23          | 243.25         |                      |             |                |     |

## Extended Benefits (EB) Continued Claims - Not Seasonally Adjusted

| STATE                | EB Claims Filed During Weeks Ended: |            |        |
|----------------------|-------------------------------------|------------|--------|
|                      | January 29                          | January 22 | Change |
| Alabama              | 0                                   | 0          | 0      |
| Alaska               | 0                                   | 0          | 0      |
| Arizona              | 4                                   | 20         | -16    |
| Arkansas             | 0                                   | 0          | 0      |
| California           | 1,953                               | 2,121      | -168   |
| Colorado             | 2                                   | 0          | 2      |
| Connecticut          | 88                                  | 172        | -84    |
| Delaware             | 0                                   | 0          | 0      |
| District of Columbia | 1                                   | 1          | 0      |
| Florida              | 60                                  | 86         | -26    |
| Georgia              | 0                                   | 0          | 0      |
| Hawaii               | 1                                   | 1          | 0      |
| Idaho                | 0                                   | 0          | 0      |
| Illinois             | 16                                  | 62         | -46    |
| Indiana              | 0                                   | 1          | -1     |
| Iowa                 | 2                                   | 2          | 0      |
| Kansas               | 15                                  | 21         | -6     |
| Kentucky             | 0                                   | 0          | 0      |
| Louisiana            | 1                                   | 5          | -4     |
| Maine                | 3                                   | 1          | 2      |
| Maryland             | 24                                  | 20         | 4      |
| Massachusetts        | 0                                   | 0          | 0      |
| Michigan             | 1                                   | 0          | 1      |
| Minnesota            | 0                                   | 8          | -8     |
| Mississippi          | 2                                   | 2          | 0      |
| Missouri             | 3                                   | 3          | 0      |
| Montana              | 1                                   | 1          | 0      |
| Nebraska             | 0                                   | 0          | 0      |
| Nevada               | 9                                   | 25         | -16    |
| New Hampshire        | 3                                   | 5          | -2     |
| New Jersey           | 31,119                              | 30,926     | 193    |
| New Mexico           | 2,190                               | 2,423      | -233   |
| New York             | 79                                  | 46         | 33     |
| North Carolina       | 12                                  | 29         | -17    |
| North Dakota         | 0                                   | 0          | 0      |
| Ohio                 | 0                                   | 107        | -107   |
| Oklahoma             | 0                                   | 0          | 0      |
| Oregon               | 21                                  | 18         | 3      |
| Pennsylvania         | 117                                 | 86         | 31     |
| Puerto Rico          | 61                                  | 93         | -32    |
| Rhode Island         | 1                                   | 1          | 0      |
| South Carolina       | 7                                   | 6          | 1      |
| South Dakota         | 0                                   | 0          | 0      |
| Tennessee            | 5                                   | 6          | -1     |
| Texas                | 204                                 | 221        | -17    |
| Utah                 | 0                                   | 0          | 0      |
| Vermont              | 0                                   | 0          | 0      |
| Virgin Islands       | 0                                   | 2          | -2     |
| Virginia             | 0                                   | 0          | 0      |
| Washington           | 0                                   | 0          | 0      |
| West Virginia        | 11                                  | 3          | 8      |
| Wisconsin            | 13                                  | 15         | -2     |
| Wyoming              | 0                                   | 0          | 0      |
| US Total             | 36,029                              | 36,539     | -510   |

Note: Information on the EB program can be found here: [EB Program information](#)

INITIAL CLAIMS FILED DURING WEEK ENDED  
FEBRUARY 5

INSURED UNEMPLOYMENT FOR WEEK ENDED  
JANUARY 29

| STATE NAME           | CHANGE FROM |              |             |                   |                  | CHANGE FROM            |              |             |                   |                  | ALL PROGRAMS<br>EXCLUDING<br>RAILROAD<br>RETIREMENT |           |
|----------------------|-------------|--------------|-------------|-------------------|------------------|------------------------|--------------|-------------|-------------------|------------------|---|-----------|
|                      | STATE       | LAST<br>WEEK | YEAR<br>AGO | UCFE <sup>1</sup> | UCX <sup>1</sup> | STATE (%) <sup>2</sup> | LAST<br>WEEK | YEAR<br>AGO | UCFE <sup>1</sup> | UCX <sup>1</sup> |   |           |
| Alabama              | 2,495       | -1,464       | -10,969     | 4                 | 3                | 5,120                  | 0.3          | -261        | -12,417           | 31               | 19  | 5,170     |
| Alaska               | 1,099       | -74          | -2,898      | 5                 | 0                | 7,708                  | 2.7          | -389        | -11,334           | 159              | 8   | 7,875     |
| Arizona              | 2,889       | 124          | -4,781      | 4                 | 1                | 13,150                 | 0.5          | -386        | -56,734           | 156              | 15  | 13,321    |
| Arkansas             | 755         | -642         | -3,576      | 5                 | 4                | 5,749                  | 0.5          | -4,731      | -18,495           | 56               | 22  | 5,827     |
| California           | 47,354      | -4,247       | -90,585     | 152               | 78               | 434,688                | 2.7          | -7,487      | -336,849          | 2,495            | 975   | 438,158   |
| Colorado             | 2,212       | -81          | -4,035      | 4                 | 6                | 18,996                 | 0.7          | -1,373      | -31,370           | 192              | 206   | 19,394    |
| Connecticut          | 2,988       | -308         | -4,255      | 8                 | 4                | 31,059                 | 2.0          | 1,077       | -53,470           | 60               | 49  | 31,168    |
| Delaware             | 650         | 235          | -1,692      | 2                 | 1                | 4,769                  | 1.1          | -137        | -9,017            | 11               | 9   | 4,789     |
| District of Columbia | 597         | -511         | -883        | 5                 | 1                | 4,830                  | 0.9          | -690        | -17,947           | 89               | 1   | 4,920     |
| Florida              | 5,925       | -755         | -15,785     | 17                | 20               | 43,603                 | 0.5          | -494        | -143,871          | 172              | 153   | 43,928    |
| Georgia              | 5,968       | -651         | -26,418     | 25                | 11               | 54,914                 | 1.3          | 16,643      | -102,604          | 336              | 127   | 55,377    |
| Hawaii               | 1,479       | -62          | -2,145      | 1                 | 8                | 8,671                  | 1.7          | -491        | -15,143           | 85               | 76  | 8,832     |
| Idaho                | 1,222       | -103         | -5,235      | 22                | 0                | 8,953                  | 1.2          | 68          | -5,893            | 328              | 4   | 9,285     |
| Illinois             | 8,431       | -2,303       | -25,828     | 4                 | 1                | 119,355                | 2.2          | -18,947     | -173,433          | 502              | 130   | 119,987   |
| Indiana              | 5,972       | -1,760       | -7,536      | 5                 | 1                | 32,063                 | 1.2          | -1,117      | -47,232           | 94               | 33  | 32,190    |
| Iowa                 | 2,018       | -539         | -4,102      | 2                 | 1                | 23,749                 | 1.6          | 9           | -24,279           | 28               | 16  | 23,793    |
| Kansas               | 1,829       | 309          | -3,762      | 2                 | 2                | 7,319                  | 0.6          | -842        | -16,522           | 30               | 19  | 7,368     |
| Kentucky             | 1,443       | -3,962       | -9,269      | 1                 | 0                | 14,731                 | 0.8          | 1,864       | -26,136           | 48               | 62  | 14,841    |
| Louisiana            | 1,720       | -173         | -7,290      | 4                 | 1                | 15,008                 | 0.9          | -372        | -45,703           | 40               | 24  | 15,072    |
| Maine                | 671         | -184         | -1,501      | 2                 | 0                | 8,176                  | 1.4          | 2           | -10,030           | 25               | 9   | 8,210     |
| Maryland             | 3,051       | 148          | -16,719     | 19                | 12               | 24,705                 | 1.0          | 1,028       | -49,962           | 152              | 90  | 24,947    |
| Massachusetts        | 5,988       | -83          | -14,512     | 9                 | 6                | 76,775                 | 2.3          | -292        | -90,862           | 146              | 60  | 76,981    |
| Michigan             | 13,795      | 2,884        | -6,086      | 2                 | 4                | 67,405                 | 1.7          | 609         | -119,282          | 168              | 58  | 67,631    |
| Minnesota            | 4,413       | -584         | -7,834      | 4                 | 1                | 66,536                 | 2.5          | -867        | -54,533           | 136              | 56  | 66,728    |
| Mississippi          | 1,049       | -48          | -6,489      | 6                 | 0                | 5,380                  | 0.5          | -332        | -23,429           | 43               | 10  | 5,433     |
| Missouri             | 3,636       | -624         | -8,577      | 5                 | 4                | 20,871                 | 0.8          | -1,095      | -36,721           | 78               | 19  | 20,968    |
| Montana              | 881         | 20           | -1,277      | 32                | 0                | 8,863                  | 2.0          | -250        | -8,662            | 663              | 15  | 9,541     |
| Nebraska             | 745         | -145         | -1,728      | 0                 | 0                | 5,828                  | 0.6          | -16         | -10,826           | 17               | 5   | 5,850     |
| Nevada               | 2,329       | -262         | -7,624      | 6                 | 2                | 19,291                 | 1.5          | -1,136      | -60,507           | 152              | 36  | 19,479    |
| New Hampshire        | 387         | -102         | -3,207      | 1                 | 1                | 3,066                  | 0.5          | -87         | -24,116           | 12               | 1   | 3,079     |
| New Jersey           | 9,528       | 406          | -6,677      | 20                | 12               | 96,672                 | 2.6          | 2,063       | -40,811           | 254              | 173   | 97,099    |
| New Mexico           | 673         | -63          | -3,036      | 4                 | 1                | 10,183                 | 1.4          | -94         | -28,946           | 233              | 22  | 10,438    |
| New York             | 16,680      | -1,528       | -43,303     | 28                | 8                | 198,676                | 2.3          | -5,102      | -263,709          | 478              | 269   | 199,423   |
| North Carolina       | 3,007       | -698         | -9,687      | 4                 | 2                | 15,634                 | 0.4          | -599        | -56,093           | 60               | 82  | 15,776    |
| North Dakota         | 419         | -84          | -735        | 0                 | 0                | 6,077                  | 1.6          | 11          | -3,613            | 17               | 1   | 6,095     |
| Ohio                 | 9,727       | -597         | -130,761    | 5                 | 12               | 57,473                 | 1.2          | -1,812      | -107,063          | 106              | 94  | 57,673    |
| Oklahoma             | 1,719       | -360         | -5,482      | 0                 | 4                | 12,689                 | 0.8          | -173        | -24,962           | 66               | 43  | 12,798    |
| Oregon               | 4,277       | -319         | -4,570      | 43                | 4                | 30,096                 | 1.7          | -1,243      | -51,111           | 767              | 42  | 30,905    |
| Pennsylvania         | 12,199      | -1,675       | -19,531     | 16                | 5                | 107,683                | 2.0          | 3,510       | -210,917          | 317              | 79  | 108,079   |
| Puerto Rico          | 1,243       | -343         | -166        | 7                 | 2                | 16,903                 | 2.0          | -186        | -16,041           | 255              | 94  | 17,252    |
| Rhode Island         | 849         | -151         | -16,875     | 1                 | 0                | 10,669                 | 2.4          | -363        | -17,012           | 61               | 23  | 10,753    |
| South Carolina       | 1,585       | 97           | -4,754      | 2                 | 9                | 12,352                 | 0.6          | 155         | -35,282           | 76               | 51  | 12,479    |
| South Dakota         | 207         | -15          | -439        | 2                 | 0                | 2,835                  | 0.7          | -10         | -2,744            | 60               | 2   | 2,897     |
| Tennessee            | 2,938       | -2,916       | -7,823      | 7                 | 10               | 19,652                 | 0.6          | 2           | -35,727           | 49               | 30  | 19,731    |
| Texas                | 14,424      | -1,508       | -32,598     | 56                | 102              | 107,474                | 0.9          | -7,214      | -230,173          | 673              | 901   | 109,048   |
| Utah                 | 933         | 58           | -2,335      | 32                | 1                | 9,572                  | 0.6          | -417        | -7,283            | 231              | 18  | 9,821     |
| Vermont              | 427         | -74          | -729        | 0                 | 0                | 4,131                  | 1.5          | -219        | -9,019            | 3                | 0   | 4,134     |
| Virgin Islands       | 75          | 14           | -93         | 0                 | 0                | 714                    | 2.0          | -158        | -1,724            | 0                | 6   | 720       |
| Virginia             | 1,995       | -162         | -12,208     | 5                 | 4                | 7,180                  | 0.2          | -259        | -57,911           | 28               | 38  | 7,246     |
| Washington           | 4,974       | -9           | -11,280     | 17                | 17               | 53,665                 | 1.7          | -2,291      | -104,742          | 429              | 265   | 54,359    |
| West Virginia        | 1,498       | -194         | -1,224      | 3                 | 3                | 12,198                 | 2.0          | 564         | -9,709            | 55               | 39  | 12,292    |
| Wisconsin            | 6,871       | -778         | -8,169      | 7                 | 3                | 42,881                 | 1.6          | -769        | -61,825           | 116              | 11  | 43,008    |
| Wyoming              | 501         | 3            | -396        | 7                 | 0                | 2,700                  | 1.1          | 0           | -2,954            | 61               | 2   | 2,763     |
| Totals               | 230,740     | -26,843      | -629,469    | 624               | 372              | 1,999,440              | 1.4          | -35,096     | -3,016,750        | 10,899           | 4,592   | 2,014,931 |

Figures appearing in columns showing over-the-week changes reflect all revisions in data for prior week submitted by state agencies.

1. The Unemployment Compensation program for Federal Employees (UCFE) and the Unemployment Compensation for Ex-servicemembers (UCX) exclude claims filed jointly under other programs to avoid duplication.
2. Rate is not seasonally adjusted. The source of U.S. total covered employment is BLS.



---

**UNADJUSTED INITIAL CLAIMS FOR WEEK ENDED FEBRUARY 5, 2022**

---

**STATES WITH AN INCREASE OF MORE THAN 1,000**

---

| <b>State</b> | <b>Change</b> | <b>State Supplied Comment</b>            |
|--------------|---------------|--|
| MI           | +2,884        | Layoffs in the wholesale trade industry. |

**STATES WITH A DECREASE OF MORE THAN 1,000**

---

| <b>State</b> | <b>Change</b> | <b>State Supplied Comment</b>  |
|--------------|---------------|--|
| CA           | -4,247        | No comment.  |
| KY           | -3,962        | No comment.  |
| TN           | -2,916        | No comment.  |
| IL           | -2,303        | No comment.  |
| IN           | -1,760        | No comment.  |
| PA           | -1,675        | Fewer layoffs in the construction, administrative, support, waste management, and remediation services, and accommodation and food services industries.                                    |
| NY           | -1,528        | Fewer layoffs in the construction, transportation and warehousing, and accommodation and food services industries.   |
| TX           | -1,508        | No comment.  |
| AL           | -1,464        | Fewer layoffs in the health care and social assistance, administrative, support, waste management, and remediation services, retail trade, and accommodation and food services industries. |

## TECHNICAL NOTES

This news release presents the weekly unemployment insurance (UI) claims reported by each state's unemployment insurance program offices. These claims may be used for monitoring workload volume, assessing state program operations and for assessing labor market conditions. States initially report claims directly taken by the state liable for the benefit payments, regardless of where the claimant who filed the claim resided. These are the basis for the advance initial claims and continued claims reported each week. These data come from ETA 538, Advance Weekly Initial and Continued Claims Report. The following week initial claims and continued claims are revised based on a second reporting by states that reflect the claimants by state of residence. These data come from the ETA 539, Weekly Claims and Extended Benefits Trigger Data Report.

### A. Initial Claims

An initial claim is a claim filed by an unemployed individual after a separation from an employer. The claimant requests a determination of basic eligibility for the UI program. When an initial claim is filed with a state, certain programmatic activities take place and these result in activity counts including the count of initial claims. The count of U.S. initial claims for unemployment insurance is a leading economic indicator because it is an indication of emerging labor market conditions in the country. However, these are weekly administrative data which are difficult to seasonally adjust, making the series subject to some volatility.

### B. Continued Weeks Claimed

A person who has already filed an initial claim and who has experienced a week of unemployment then files a continued claim to claim benefits for that week of unemployment. On a weekly basis, continued claims are also referred to as insured unemployment, as continued claims reflect a good approximation of the current number of insured unemployed workers filing for UI benefits. The count of U.S. continued weeks claimed is also a good indicator of labor market conditions. While continued claims are not a leading indicator (they roughly coincide with economic cycles at their peaks and lag at cycle troughs), they provide confirming evidence of the direction of the U.S. economy.

### C. Seasonal Adjustments and Annual Revisions

Over the course of a year, the weekly changes in the levels of initial claims and continued claims undergo regularly occurring fluctuations. These fluctuations may result from seasonal changes in weather, major holidays, the opening and closing of schools, or other similar events. Because these seasonal events follow a more or less regular pattern each year, their influence on the level of a series can be tempered by adjusting for regular seasonal variation. These adjustments make trend and cycle developments easier to spot. At the beginning of each calendar year, the Bureau of Labor Statistics provides the Employment and Training Administration (ETA) with a set of seasonal factors to apply to the unadjusted data during that year. Concurrent with the implementation and release of the new seasonal factors, ETA incorporates revisions to the UI claims historical series caused by updates to the unadjusted data.

[Weekly Claims Archives](#)

[Weekly Claims Data](#)

U.S. Department of Labor news materials are accessible at <http://www.dol.gov>. The Department's [Reasonable Accommodation Resource Center](#) converts Departmental information and documents into alternative formats, which include Braille and large print. For alternative format requests, please contact the Department at (202) 693-7828 (voice) or (800) 877-8339 (federal relay).

U.S. Department of Labor  
Employment and Training Administration  
Washington, D.C. 20210  
Release Number: USDL 22-280-NAT

Program Contacts:  
Kevin Stapleton: (202) 693-3009  
Media Contact: (202) 693-4676