



News Release

Connect with DOL at <https://blog.dol.gov>



TRANSMISSION OF MATERIALS IN THIS RELEASE IS EMBARGOED UNTIL
8:30 A.M. (Eastern) Thursday, February 3, 2022

UNEMPLOYMENT INSURANCE WEEKLY CLAIMS

SEASONALLY ADJUSTED DATA

In the week ending January 29, the advance figure for seasonally adjusted **initial claims** was 238,000, a decrease of 23,000 from the previous week's revised level. The previous week's level was revised up by 1,000 from 260,000 to 261,000. The 4-week moving average was 255,000, an increase of 7,750 from the previous week's revised average. The previous week's average was revised up by 250 from 247,000 to 247,250.

The advance seasonally adjusted **insured unemployment rate** was 1.2 percent for the week ending January 22, unchanged from the previous week's unrevised rate. The advance number for seasonally adjusted **insured unemployment** during the week ending January 22 was 1,628,000, a decrease of 44,000 from the previous week's revised level. The previous week's level was revised down by 3,000 from 1,675,000 to 1,672,000. The 4-week moving average was 1,619,750, a decrease of 31,250 from the previous week's revised average. This is the lowest level for this average since August 4, 1973 when it was 1,608,750. The previous week's average was revised down by 750 from 1,651,750 to 1,651,000.

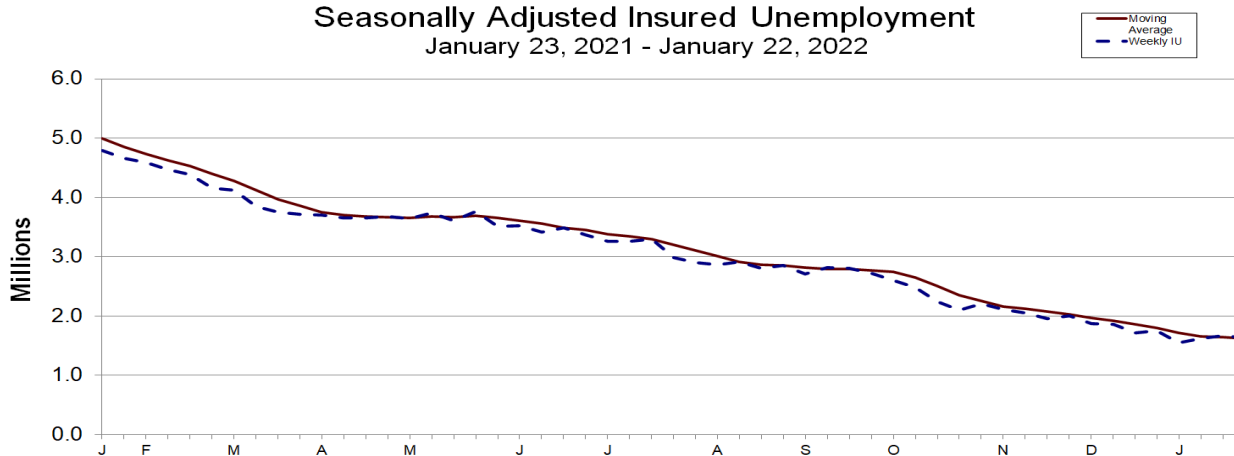
Seasonally Adjusted Initial Claims

January 30, 2021 - January 29, 2022



Seasonally Adjusted Insured Unemployment

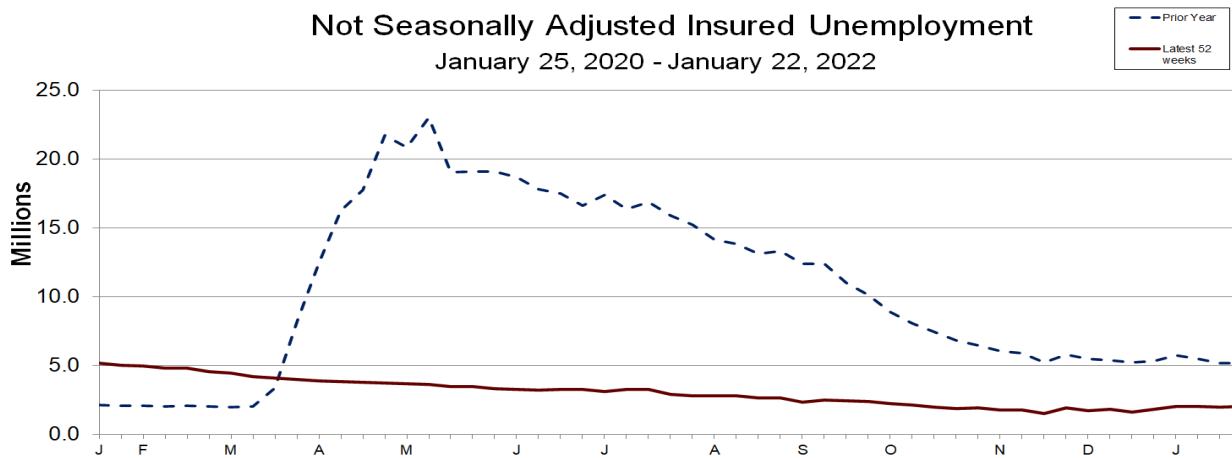
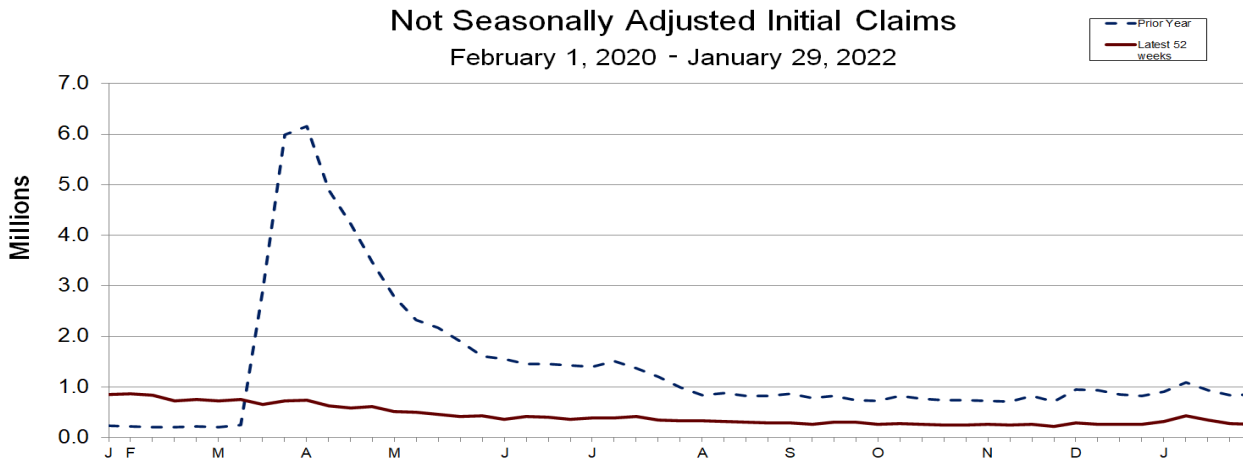
January 23, 2021 - January 22, 2022



UNADJUSTED DATA

The advance number of actual initial claims under state programs, unadjusted, totaled 257,002 in the week ending January 29, a decrease of 11,728 (or -4.4 percent) from the previous week. The seasonal factors had expected an increase of 11,183 (or 4.2 percent) from the previous week. There were 849,650 initial claims in the comparable week in 2021.

The advance unadjusted insured unemployment rate was 1.5 percent during the week ending January 22, an increase of 0.1 percentage point from the prior week. The advance unadjusted level of insured unemployment in state programs totaled 2,040,548, an increase of 39,320 (or 2.0 percent) from the preceding week. The seasonal factors had expected an increase of 83,384 (or 4.2 percent) from the previous week. A year earlier the rate was 3.7 percent and the volume was 5,193,816.



The total number of continued weeks claimed for benefits in all programs for the week ending January 15 was 2,067,781, a decrease of 73,205 from the previous week. There were 18,521,105 weekly claims filed for benefits in all programs in the comparable week in 2021.

During the week ending January 15, Extended Benefits were available in the following 2 states: New Jersey, and New Mexico.

Initial claims for UI benefits filed by former Federal civilian employees totaled 684 in the week ending January 22, a decrease of 255 from the prior week. There were 362 initial claims filed by newly discharged veterans, a decrease of 77 from the preceding week.

There were 10,911 continued weeks claimed filed by former Federal civilian employees the week ending January 15, an increase of 781 from the previous week. Newly discharged veterans claiming benefits totaled 4,714, a decrease of 332 from the prior week.

The highest insured unemployment rates in the week ending January 15 were in Alaska (3.0), the Virgin Islands (3.0), New Jersey (2.6), California (2.5), Minnesota (2.5), New York (2.4), Rhode Island (2.4), Illinois (2.3), Kentucky (2.3), and Massachusetts (2.3).

The only increase in initial claims for the week ending January 22 was in Alabama (+628), while the largest decreases were in California (-8,078), Pennsylvania (-7,967), New York (-5,722), New Jersey (-4,818), and Kentucky (-4,049).

UNEMPLOYMENT INSURANCE DATA FOR REGULAR STATE PROGRAMS

WEEK ENDING	January 29	January 22	Change	January 15	Prior Year¹
Initial Claims (SA)	238,000	261,000	-23,000	290,000	837,000
Initial Claims (NSA)	257,002	268,730	-11,728	340,930	849,650
4-Wk Moving Average (SA)	255,000	247,250	+7,750	232,000	865,750

WEEK ENDING	January 22	January 15	Change	January 8	Prior Year¹
Insured Unemployment (SA)	1,628,000	1,672,000	-44,000	1,624,000	4,791,000
Insured Unemployment (NSA)	2,040,548	2,001,228	+39,320	2,064,943	5,193,816
4-Wk Moving Average (SA)	1,619,750	1,651,000	-31,250	1,662,500	4,992,500
Insured Unemployment Rate (SA) ²	1.2%	1.2%	0.0	1.2%	3.4%
Insured Unemployment Rate (NSA) ²	1.5%	1.4%	+0.1	1.5%	3.7%

INITIAL CLAIMS FILED IN FEDERAL PROGRAMS (UNADJUSTED)³

WEEK ENDING	January 22	January 15	Change	Prior Year¹
Federal Employees (UCFE)	684	939	-255	1,914
Newly Discharged Veterans (UCX)	362	439	-77	1,168

CONTINUED WEEKS CLAIMED FILED FOR UI BENEFITS IN ALL PROGRAMS (UNADJUSTED)³

WEEK ENDING	January 15	January 8	Change	Prior Year¹
Regular State	1,996,626	2,060,087	-63,461	5,184,284
Federal Employees	10,911	10,130	+781	19,242
Newly Discharged Veterans	4,714	5,046	-332	8,613
Extended Benefits ⁴	38,085	48,096	-10,011	1,702,647
State Additional Benefits ⁵	2,170	2,167	+3	1,778
STC / Workshare ⁶	15,275	15,460	-185	94,293
TOTAL⁷	2,067,781	2,140,986	-73,205	18,521,105

FOOTNOTES

SA - Seasonally Adjusted Data, NSA - Not Seasonally Adjusted Data Continued weeks claimed represent all weeks of benefits claimed during the week being reported, and do not represent weeks claimed by unique individuals.

1. Prior year is comparable to most recent data.
2. Most recent week used covered employment of 138,088,262 as denominator.
3. NOTICE: Ongoing claims for PUA and PEUC are no longer included in this news release. Any ongoing claims for these programs represent activity for periods prior to the programs' expiration on September 6, 2021. Claims activity for these programs will continue to be posted online at: [Weekly Pandemic Program Claims](#)
4. Information on the EB program can be found here: [EB Program information](#)
5. Some states maintain additional benefit programs for those claimants who exhaust regular benefits, and when applicable, extended benefits. Information on states that participate, and the extent of benefits paid, can be found starting on page 4-4 of this link: [Extensions and Special Programs PDF](#)
6. Information on STC/Worksharing can be found starting on page 9-10 of the following link: [Extensions and Special Programs PDF](#)
7. Prior year total includes PUA and PEUC claims.

Advance State Claims - Not Seasonally Adjusted

STATE	Initial Claims Filed During Week Ended January 29			Insured Unemployment For Week Ended January 22		
	Advance	Prior Wk	Change	Advance	Prior Wk	Change
Alabama	3,728	5,302	-1,574	4,144	5,384	-1,240
Alaska	1,261	1,168	93	7,982	8,385	-403
Arizona	2,636	2,672	-36	11,328	13,244	-1,916
Arkansas	1,188	1,399	-211	9,374	10,434	-1,060
California	55,288	54,196	1,092	453,235	410,294	42,941
Colorado	2,358	2,399	-41	20,856	19,662	1,194
Connecticut	3,301	3,805	-504	31,909	28,509	3,400
Delaware	401	467	-66	5,417	4,913	504
District of Columbia	1,005	1,208	-203	5,377	5,865	-488
Florida	6,081	7,346	-1,265	40,893	47,128	-6,235
Georgia	6,036	5,068	968	37,673	35,109	2,564
Hawaii	1,556	1,677	-121	9,285	8,877	408
Idaho	1,350	1,334	16	8,549	8,771	-222
Illinois	9,711	11,817	-2,106	139,419	123,648	15,771
Indiana	7,922	6,793	1,129	33,500	31,318	2,182
Iowa	2,745	2,370	375	24,084	22,478	1,606
Kansas	1,528	2,503	-975	8,281	6,935	1,346
Kentucky	5,393	7,723	-2,330	12,700	43,075	-30,375
Louisiana	1,671	1,922	-251	13,968	16,331	-2,363
Maine	825	904	-79	8,096	8,013	83
Maryland	2,691	3,054	-363	23,304	23,238	66
Massachusetts	5,977	7,392	-1,415	76,406	76,234	172
Michigan	11,118	9,673	1,445	65,970	68,545	-2,575
Minnesota	5,107	5,320	-213	72,504	67,216	5,288
Mississippi	992	1,204	-212	4,843	5,968	-1,125
Missouri	4,009	4,122	-113	21,228	21,681	-453
Montana	872	936	-64	9,528	8,928	600
Nebraska	892	1,168	-276	5,869	5,649	220
Nevada	2,664	2,464	200	18,994	20,621	-1,627
New Hampshire	405	471	-66	2,882	3,204	-322
New Jersey	8,901	10,064	-1,163	96,192	96,702	-510
New Mexico	729	729	0	10,218	10,259	-41
New York	18,085	17,533	552	205,828	202,237	3,591
North Carolina	3,581	3,415	166	15,530	15,596	-66
North Dakota	550	595	-45	6,547	5,709	838
Ohio	10,078	15,171	-5,093	59,086	59,237	-151
Oklahoma	1,801	2,141	-340	11,730	13,097	-1,367
Oregon	4,560	5,037	-477	31,827	31,639	188
Pennsylvania	13,793	11,139	2,654	103,415	96,235	7,180
Puerto Rico	1,483	1,371	112	15,535	16,342	-807
Rhode Island	993	1,247	-254	11,230	10,766	464
South Carolina	1,474	1,147	327	11,582	12,063	-481
South Dakota	206	268	-62	2,831	2,705	126
Tennessee	5,707	6,128	-421	18,689	18,777	-88
Texas	15,314	15,147	167	111,628	112,375	-747
Utah	1,387	2,745	-1,358	8,211	10,358	-2,147
Vermont	488	511	-23	4,600	3,963	637
Virgin Islands	22	44	-22	896	1,036	-140
Virginia	2,378	1,940	438	8,289	7,543	746
Washington	4,976	4,859	117	59,759	57,959	1,800
West Virginia	1,626	1,381	245	11,889	9,410	2,479
Wisconsin	7,682	7,832	-150	44,349	44,861	-512
Wyoming	477	409	68	3,089	2,702	387
US Total	257,002	268,730	-11,728	2,040,548	2,001,228	39,320

Note: Advance claims are not directly comparable to claims reported in prior weeks. Advance claims are reported by the state liable for paying the unemployment compensation, whereas previous weeks reported claims reflect claimants by state of residence. In addition, claims reported as "workshare equivalent" in the previous week are added to the advance claims as a proxy for the current week's "workshare equivalent" activity.

Seasonally Adjusted US Weekly UI Claims (in thousands)

Week Ending	Initial Claims	Change from		Insured Unemployment	Change from		IUR
		Prior Week	4-Week Average		Prior Week	4-Week Average	
January 23, 2021	836	-50	851.75	4,791	-87	4,992.50	3.4
January 30, 2021	837	1	865.75	4,655	-136	4,846.25	3.3
February 6, 2021	863	26	855.50	4,592	-63	4,729.00	3.2
February 13, 2021	847	-16	845.75	4,469	-123	4,626.75	3.1
February 20, 2021	747	-100	823.50	4,383	-86	4,524.75	3.1
February 27, 2021	761	14	804.50	4,157	-226	4,400.25	2.9
March 6, 2021	734	-27	772.25	4,123	-34	4,283.00	2.9
March 13, 2021	765	31	751.75	3,841	-282	4,126.00	2.7
March 20, 2021	658	-107	729.50	3,753	-88	3,968.50	2.6
March 27, 2021	729	71	721.50	3,717	-36	3,858.50	2.6
April 3, 2021	742	13	723.50	3,708	-9	3,754.75	2.7
April 10, 2021	586	-156	678.75	3,652	-56	3,707.50	2.6
April 17, 2021	566	-20	655.75	3,653	1	3,682.50	2.6
April 24, 2021	590	24	621.00	3,680	27	3,673.25	2.6
May 1, 2021	507	-83	562.25	3,640	-40	3,656.25	2.6
May 8, 2021	478	-29	535.25	3,738	98	3,677.75	2.7
May 15, 2021	444	-34	504.75	3,611	-127	3,667.25	2.6
May 22, 2021	405	-39	458.50	3,769	158	3,689.50	2.7
May 29, 2021	388	-17	428.75	3,517	-252	3,658.75	2.5
June 5, 2021	374	-14	402.75	3,528	11	3,606.25	2.5
June 12, 2021	418	44	396.25	3,412	-116	3,556.50	2.5
June 19, 2021	416	-2	399.00	3,484	72	3,485.25	2.5
June 26, 2021	368	-48	394.00	3,367	-117	3,447.75	2.4
July 3, 2021	386	18	397.00	3,265	-102	3,382.00	2.4
July 10, 2021	368	-18	384.50	3,262	-3	3,344.50	2.4
July 17, 2021	424	56	386.50	3,296	34	3,297.50	2.4
July 24, 2021	399	-25	394.25	2,980	-316	3,200.75	2.2
July 31, 2021	387	-12	394.50	2,899	-81	3,109.25	2.1
August 7, 2021	377	-10	396.75	2,865	-34	3,010.00	2.1
August 14, 2021	349	-28	378.00	2,908	43	2,913.00	2.1
August 21, 2021	354	5	366.75	2,805	-103	2,869.25	2.0
August 28, 2021	345	-9	356.25	2,852	47	2,857.50	2.1
September 4, 2021	312	-33	340.00	2,715	-137	2,820.00	2.0
September 11, 2021	335	23	336.50	2,820	105	2,798.00	2.1
September 18, 2021	351	16	335.75	2,811	-9	2,799.50	2.1
September 25, 2021	364	13	340.50	2,727	-84	2,768.25	2.0
October 2, 2021	329	-35	344.75	2,603	-124	2,740.25	1.9
October 9, 2021	296	-33	335.00	2,480	-123	2,655.25	1.8
October 16, 2021	291	-5	320.00	2,239	-241	2,512.25	1.7
October 23, 2021	283	-8	299.75	2,101	-138	2,355.75	1.6
October 30, 2021	271	-12	285.25	2,209	108	2,257.25	1.6
November 6, 2021	269	-2	278.50	2,109	-100	2,164.50	1.6
November 13, 2021	270	1	273.25	2,055	-54	2,118.50	1.5
November 20, 2021	194	-76	251.00	1,954	-101	2,081.75	1.4
November 27, 2021	227	33	240.00	1,999	45	2,029.25	1.5
December 4, 2021	188	-39	219.75	1,867	-132	1,968.75	1.4
December 11, 2021	205	17	203.50	1,856	-11	1,919.00	1.4
December 18, 2021	206	1	206.50	1,718	-138	1,860.00	1.3
December 25, 2021	200	-6	199.75	1,753	35	1,798.50	1.3
January 1, 2022	207	7	204.50	1,555	-198	1,720.50	1.1
January 8, 2022	231	24	211.00	1,624	69	1,662.50	1.2
January 15, 2022	290	59	232.00	1,672	48	1,651.00	1.2
January 22, 2022	261	-29	247.25	1,628	-44	1,619.75	1.2
January 29, 2022	238	-23	255.00				

Extended Benefits (EB) Continued Claims - Not Seasonally Adjusted

STATE	EB Claims Filed During Weeks Ended:		
	January 15	January 8	Change
Alabama	0	0	0
Alaska	0	0	0
Arizona	31	7	24
Arkansas	0	0	0
California	2,566	2,408	158
Colorado	1	1	0
Connecticut	189	4,899	-4,710
Delaware	0	0	0
District of Columbia	1	1	0
Florida	78	90	-12
Georgia	0	0	0
Hawaii	1	1	0
Idaho	0	1	-1
Illinois	31	67	-36
Indiana	3	2	1
Iowa	2	4	-2
Kansas	11	2	9
Kentucky	0	0	0
Louisiana	0	5	-5
Maine	2	3	-1
Maryland	30	10	20
Massachusetts	0	0	0
Michigan	21	6	15
Minnesota	0	4	-4
Mississippi	6	8	-2
Missouri	6	4	2
Montana	1	7	-6
Nebraska	0	0	0
Nevada	6	6	0
New Hampshire	3	4	-1
New Jersey	31,908	37,105	-5,197
New Mexico	2,643	2,789	-146
New York	93	41	52
North Carolina	17	16	1
North Dakota	0	0	0
Ohio	34	47	-13
Oklahoma	0	0	0
Oregon	16	7	9
Pennsylvania	86	123	-37
Puerto Rico	66	114	-48
Rhode Island	1	3	-2
South Carolina	20	12	8
South Dakota	0	0	0
Tennessee	7	13	-6
Texas	170	253	-83
Utah	0	0	0
Vermont	8	12	-4
Virgin Islands	0	0	0
Virginia	0	0	0
Washington	0	0	0
West Virginia	4	3	1
Wisconsin	23	18	5
Wyoming	0	0	0
US Total	38,085	48,096	-10,011

Note: Information on the EB program can be found here: [EB Program information](#)

INITIAL CLAIMS FILED DURING WEEK ENDED
JANUARY 22

INSURED UNEMPLOYMENT FOR WEEK ENDED
JANUARY 15

STATE NAME	CHANGE FROM					CHANGE FROM					ALL PROGRAMS EXCLUDING RAILROAD RETIREMENT	
	STATE	LAST WEEK	YEAR AGO	UCFE ¹	UCX ¹	STATE (%) ²	LAST WEEK	YEAR AGO	UCFE ¹	UCX ¹		
Alabama	5,302	628	-6,313	10	2	5,384	0.3	-420	-11,174	30	23	5,437
Alaska	1,168	-74	-2,807	6	1	8,385	3.0	-429	-10,585	164	7	8,556
Arizona	2,672	-396	-10,362	3	0	13,244	0.5	-46	-57,564	199	19	13,462
Arkansas	1,399	-274	-2,502	2	0	10,434	0.9	-202	-12,128	83	13	10,530
California	54,196	-8,078	-4,030	178	77	410,294	2.5	-5,165	-406,324	2,419	939	413,652
Colorado	2,399	-302	-2,076	5	5	19,662	0.8	-378	-36,881	288	157	20,107
Connecticut	3,805	-1,568	-6,720	12	3	28,509	1.9	-3,404	-56,971	51	47	28,607
Delaware	467	-228	-2,105	5	3	4,913	1.2	-237	-8,964	11	13	4,937
District of Columbia	1,208	-897	-84	10	0	5,865	1.1	-893	-18,474	83	3	5,951
Florida	7,346	-1,247	-55,472	17	27	47,128	0.6	1,676	-108,705	185	185	47,498
Georgia	5,068	-2,252	-22,948	20	12	35,109	0.8	-4,737	-116,462	216	148	35,473
Hawaii	1,677	-546	-2,221	2	8	8,877	1.7	-1,045	-15,995	66	64	9,007
Idaho	1,334	-281	-2,955	13	1	8,771	1.2	-328	-5,457	299	6	9,076
Illinois	11,817	-3,333	-83,664	5	3	123,648	2.3	-15,275	-205,209	485	117	124,250
Indiana	6,793	-2,230	-6,561	6	3	31,318	1.2	-1,121	-63,740	100	37	31,455
Iowa	2,370	-636	-2,881	5	5	22,478	1.5	-2,014	-23,825	48	18	22,544
Kansas	2,503	-231	-23,923	1	0	6,935	0.5	46	-65,361	29	16	6,980
Kentucky	7,723	-4,049	-184	4	1	43,075	2.3	926	-416	75	116	43,266
Louisiana	1,922	-628	-10,082	2	1	16,331	0.9	97	-48,585	55	18	16,404
Maine	904	-312	-1,941	3	0	8,013	1.4	52	-9,711	27	9	8,049
Maryland	3,054	-635	-30,415	8	6	23,238	1.0	-224	-56,368	150	82	23,470
Massachusetts	7,392	-2,118	-14,793	21	5	76,234	2.3	1,223	-95,795	138	71	76,443
Michigan	9,673	-2,805	-8,773	1	5	68,545	1.7	-1,451	-119,672	172	50	68,767
Minnesota	5,320	-1,251	-6,499	7	2	67,216	2.5	-2,302	-58,627	143	68	67,427
Mississippi	1,204	-303	-5,645	0	1	5,968	0.6	-564	-24,626	39	8	6,015
Missouri	4,122	-1,365	-6,445	4	3	21,681	0.8	-2,410	-32,367	73	20	21,774
Montana	936	-181	-1,247	39	1	8,928	2.0	-341	-8,931	686	27	9,641
Nebraska	1,168	-277	-1,853	0	2	5,649	0.6	-25	-10,997	19	4	5,672
Nevada	2,464	-688	-7,641	10	4	20,621	1.6	75	-60,306	156	37	20,814
New Hampshire	471	-126	-3,293	4	1	3,204	0.5	30	-25,332	10	1	3,215
New Jersey	10,064	-4,818	-6,781	20	11	96,702	2.6	-3,274	-44,981	226	285	97,213
New Mexico	729	-210	-3,879	3	0	10,259	1.4	-341	-32,268	257	20	10,536
New York	17,533	-5,722	-48,717	29	17	202,237	2.4	-3,806	-237,554	516	286	203,039
North Carolina	3,415	-817	-10,103	4	1	15,596	0.4	-264	-51,876	71	92	15,759
North Dakota	595	-149	-671	3	0	5,709	1.5	-208	-3,585	9	2	5,720
Ohio	15,171	-241	-34,831	7	11	59,237	1.2	-187	-148,985	100	121	59,458
Oklahoma	2,141	-99	-4,113	13	6	13,097	0.9	77	-25,177	97	44	13,238
Oregon	5,037	-349	-3,878	48	6	31,639	1.7	-3,232	-48,991	770	61	32,470
Pennsylvania	11,139	-7,967	-15,441	23	8	96,235	1.8	800	-224,688	288	74	96,597
Puerto Rico	1,371	-178	-62	0	1	16,342	2.0	-945	-24,291	177	50	16,569
Rhode Island	1,247	-771	-10,448	0	1	10,766	2.4	-104	-12,965	44	26	10,836
South Carolina	1,147	-965	-3,666	7	4	12,063	0.6	-2,071	-35,443	32	45	12,140
South Dakota	268	-37	-312	6	0	2,705	0.7	-19	-2,211	66	3	2,774
Tennessee	6,128	-1,017	-7,174	6	1	18,777	0.6	-758	-33,540	61	18	18,856
Texas	15,147	-3,917	-38,701	39	78	112,375	0.9	-5,044	-230,882	766	921	114,062
Utah	2,745	-3,053	-179	32	4	10,358	0.7	-414	-6,206	268	12	10,638
Vermont	511	-199	-948	0	0	3,963	1.4	-260	-8,945	4	0	3,967
Virgin Islands	44	-1	-16	0	0	1,036	3.0	422	-670	0	0	1,036
Virginia	1,940	-909	-16,372	1	3	7,543	0.2	484	-59,755	35	34	7,612
Washington	4,859	-718	-12,469	19	24	57,959	1.8	-4,091	-104,897	401	259	58,619
West Virginia	1,381	-460	-1,527	1	1	9,410	1.5	-1,122	-12,103	48	21	9,479
Wisconsin	7,832	-2,405	-7,639	11	3	44,861	1.6	-472	-59,588	115	15	44,991
Wyoming	409	-160	-612	9	0	2,702	1.1	0	-2,741	61	2	2,765
Totals	268,730	-71,845	-564,974	684	362	2,001,228	1.4	-63,715	-3,187,894	10,911	4,714	2,016,853

Figures appearing in columns showing over-the-week changes reflect all revisions in data for prior week submitted by state agencies.

1. The Unemployment Compensation program for Federal Employees (UCFE) and the Unemployment Compensation for Ex-servicemembers (UCX) exclude claims filed jointly under other programs to avoid duplication.
2. Rate is not seasonally adjusted. The source of U.S. total covered employment is BLS.

UNADJUSTED INITIAL CLAIMS FOR WEEK ENDED JANUARY 22, 2022

STATES WITH AN INCREASE OF MORE THAN 1,000

State	Change	State Supplied Comment
None		

STATES WITH A DECREASE OF MORE THAN 1,000

State	Change	State Supplied Comment
CA	-8,078	No comment.
PA	-7,967	No comment.
NY	-5,722	No comment.
NJ	-4,818	Fewer layoffs in the accommodation and food services industry.
KY	-4,049	No comment.
TX	-3,917	No comment.
IL	-3,333	No comment.
UT	-3,053	No comment.
MI	-2,805	No comment.
WI	-2,405	Fewer layoffs in the construction and transportation and warehousing industries.
GA	-2,252	Fewer layoffs in the manufacturing, accommodation and food services, administrative, support, waste management, and remediation services, and information industries.
IN	-2,230	No comment.
MA	-2,118	No comment.
CT	-1,568	No comment.
MO	-1,365	Fewer layoffs in the manufacturing, accommodation and food services, and construction industries.
MN	-1,251	No comment.
FL	-1,247	No comment.
TN	-1,017	No comment.

TECHNICAL NOTES

This news release presents the weekly unemployment insurance (UI) claims reported by each state's unemployment insurance program offices. These claims may be used for monitoring workload volume, assessing state program operations and for assessing labor market conditions. States initially report claims directly taken by the state liable for the benefit payments, regardless of where the claimant who filed the claim resided. These are the basis for the advance initial claims and continued claims reported each week. These data come from ETA 538, Advance Weekly Initial and Continued Claims Report. The following week initial claims and continued claims are revised based on a second reporting by states that reflect the claimants by state of residence. These data come from the ETA 539, Weekly Claims and Extended Benefits Trigger Data Report.

A. Initial Claims

An initial claim is a claim filed by an unemployed individual after a separation from an employer. The claimant requests a determination of basic eligibility for the UI program. When an initial claim is filed with a state, certain programmatic activities take place and these result in activity counts including the count of initial claims. The count of U.S. initial claims for unemployment insurance is a leading economic indicator because it is an indication of emerging labor market conditions in the country. However, these are weekly administrative data which are difficult to seasonally adjust, making the series subject to some volatility.

B. Continued Weeks Claimed

A person who has already filed an initial claim and who has experienced a week of unemployment then files a continued claim to claim benefits for that week of unemployment. On a weekly basis, continued claims are also referred to as insured unemployment, as continued claims reflect a good approximation of the current number of insured unemployed workers filing for UI benefits. The count of U.S. continued weeks claimed is also a good indicator of labor market conditions. While continued claims are not a leading indicator (they roughly coincide with economic cycles at their peaks and lag at cycle troughs), they provide confirming evidence of the direction of the U.S. economy.

C. Seasonal Adjustments and Annual Revisions

Over the course of a year, the weekly changes in the levels of initial claims and continued claims undergo regularly occurring fluctuations. These fluctuations may result from seasonal changes in weather, major holidays, the opening and closing of schools, or other similar events. Because these seasonal events follow a more or less regular pattern each year, their influence on the level of a series can be tempered by adjusting for regular seasonal variation. These adjustments make trend and cycle developments easier to spot. At the beginning of each calendar year, the Bureau of Labor Statistics provides the Employment and Training Administration (ETA) with a set of seasonal factors to apply to the unadjusted data during that year. Concurrent with the implementation and release of the new seasonal factors, ETA incorporates revisions to the UI claims historical series caused by updates to the unadjusted data.

[Weekly Claims Archives](#)

[Weekly Claims Data](#)

U.S. Department of Labor news materials are accessible at <http://www.dol.gov>. The Department's [Reasonable Accommodation Resource Center](#) converts Departmental information and documents into alternative formats, which include Braille and large print. For alternative format requests, please contact the Department at (202) 693-7828 (voice) or (800) 877-8339 (federal relay).

U.S. Department of Labor
Employment and Training Administration
Washington, D.C. 20210
Release Number: USDL 22-173-NAT

Program Contacts:
Kevin Stapleton: (202) 693-3009
Media Contact: (202) 693-4676