



News Release

Connect with DOL at <https://blog.dol.gov>



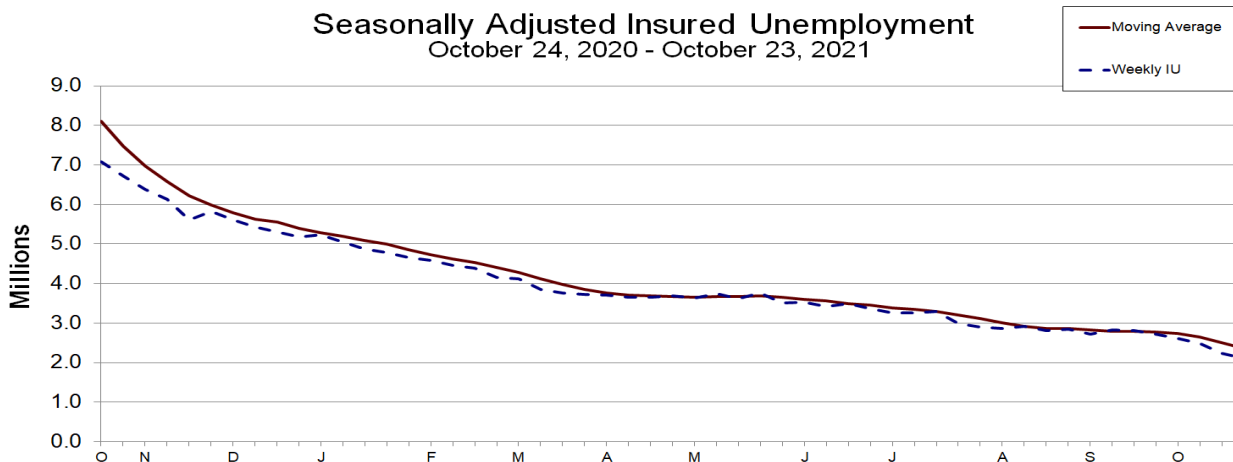
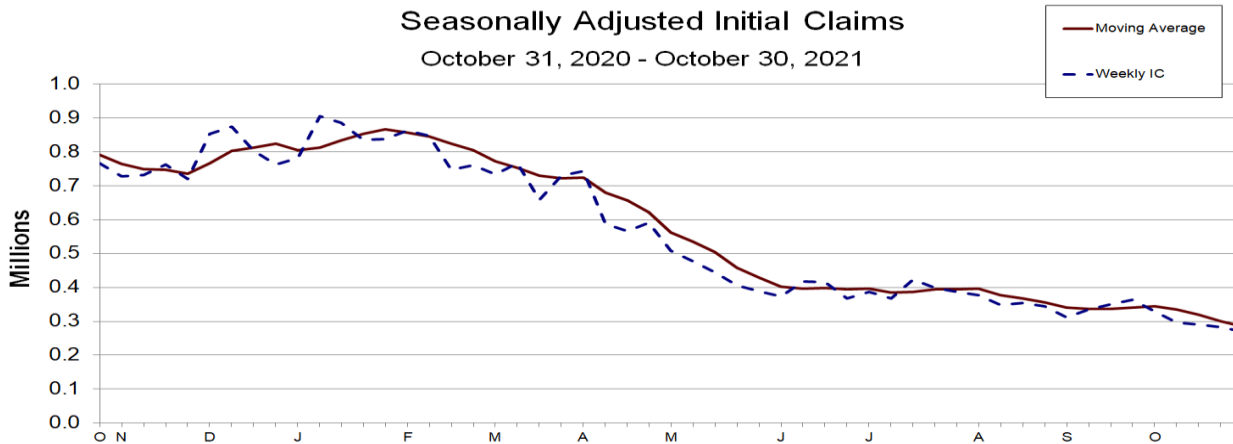
TRANSMISSION OF MATERIALS IN THIS RELEASE IS EMBARGOED UNTIL
8:30 A.M. (Eastern) Thursday, November 4, 2021

UNEMPLOYMENT INSURANCE WEEKLY CLAIMS

SEASONALLY ADJUSTED DATA

In the week ending October 30, the advance figure for seasonally adjusted **initial claims** was 269,000, a decrease of 14,000 from the previous week's revised level. This is the lowest level for initial claims since March 14, 2020 when it was 256,000. The previous week's level was revised up by 2,000 from 281,000 to 283,000. The 4-week moving average was 284,750, a decrease of 15,000 from the previous week's revised average. This is the lowest level for this average since March 14, 2020 when it was 225,500. The previous week's average was revised up by 500 from 299,250 to 299,750.

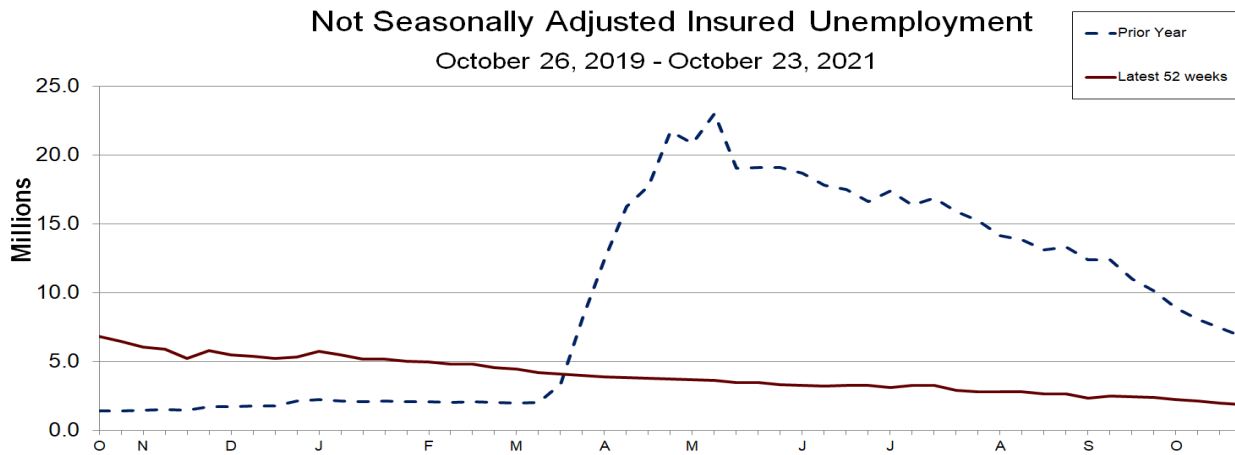
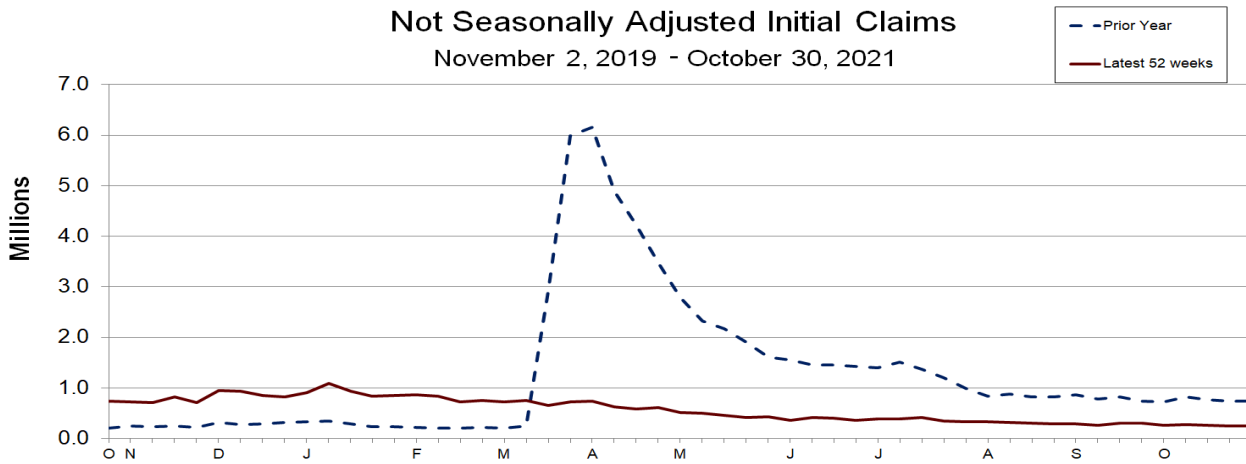
The advance seasonally adjusted **insured unemployment rate** was 1.6 percent for the week ending October 23, a decrease of 0.1 percentage point from the previous week's unrevised rate. The advance number for seasonally adjusted **insured unemployment** during the week ending October 23 was 2,105,000, a decrease of 134,000 from the previous week's revised level. This is the lowest level for insured unemployment since March 14, 2020 when it was 1,770,000. The previous week's level was revised down by 4,000 from 2,243,000 to 2,239,000. The 4-week moving average was 2,356,750, a decrease of 155,500 from the previous week's revised average. This is the lowest level for this average since March 21, 2020 when it was 2,071,750. The previous week's average was revised down by 1,000 from 2,513,250 to 2,512,250.



UNADJUSTED DATA

The advance number of actual initial claims under state programs, unadjusted, totaled 240,216 in the week ending October 30, a decrease of 7,114 (or -2.9 percent) from the previous week. The seasonal factors had expected an increase of 6,872 (or 2.8 percent) from the previous week. There were 737,503 initial claims in the comparable week in 2020. In addition, for the week ending October 30, 35 states reported 2,195 initial claims for Pandemic Unemployment Assistance.

The advance unadjusted insured unemployment rate was 1.4 percent during the week ending October 23, a decrease of 0.1 percentage point from the prior week. The advance unadjusted level of insured unemployment in state programs totaled 1,889,228, a decrease of 97,398 (or -4.9 percent) from the preceding week. The seasonal factors had expected an increase of 36,031 (or 1.8 percent) from the previous week. A year earlier the rate was 4.7 percent and the volume was 6,857,323.



The total number of continued weeks claimed for benefits in all programs for the week ending October 16 was 2,672,948, a decrease of 157,731 from the previous week. There were 22,013,937 weekly claims filed for benefits in all programs in the comparable week in 2020.

During the week ending October 16, Extended Benefits were available in the following 4 states: Alaska, Connecticut, New Jersey, and New Mexico.

Initial claims for UI benefits filed by former Federal civilian employees totaled 742 in the week ending October 23, a decrease of 76 from the prior week. There were 407 initial claims filed by newly discharged veterans, a decrease of 79 from the preceding week.

There were 7,985 continued weeks claimed filed by former Federal civilian employees the week ending October 16, an increase of 273 from the previous week. Newly discharged veterans claiming benefits totaled 5,428, an increase of 225 from the prior week.

During the week ending October 16, 42 states reported 277,109 continued weekly claims for Pandemic Unemployment Assistance benefits and 45 states reported 233,684 continued claims for Pandemic Emergency Unemployment Compensation benefits.

The highest insured unemployment rates in the week ending October 16 were in Puerto Rico (4.2), California (2.9), Hawaii (2.8), Illinois (2.8), New Jersey (2.5), the Virgin Islands (2.5), Alaska (2.4), District of Columbia (2.3), Nevada (2.3), and Pennsylvania (2.0).

The largest increases in initial claims for the week ending October 23 were in District of Columbia (+3,875), Kentucky (+2,940), Missouri (+2,048), Florida (+1,307), and Oklahoma (+1,256), while the largest decreases were in California (-13,138), Georgia (-4,107), Michigan (-2,505), Pennsylvania (-1,245), and Tennessee (-794).

UNEMPLOYMENT INSURANCE DATA FOR REGULAR STATE PROGRAMS

WEEK ENDING	October 30	October 23	Change	October 16	Prior Year¹
Initial Claims (SA)	269,000	283,000	-14,000	291,000	765,000
Initial Claims (NSA)	240,216	247,330	-7,114	257,215	737,503
4-Wk Moving Average (SA)	284,750	299,750	-15,000	320,000	791,000

WEEK ENDING	October 23	October 16	Change	October 9	Prior Year¹
Insured Unemployment (SA)	2,105,000	2,239,000	-134,000	2,480,000	7,076,000
Insured Unemployment (NSA)	1,889,228	1,986,626	-97,398	2,168,231	6,857,323
4-Wk Moving Average (SA)	2,356,750	2,512,250	-155,500	2,655,250	8,104,500
Insured Unemployment Rate (SA) ²	1.6%	1.7%	-0.1	1.8%	4.8%
Insured Unemployment Rate (NSA) ²	1.4%	1.5%	-0.1	1.6%	4.7%

INITIAL CLAIMS FILED IN FEDERAL PROGRAMS (UNADJUSTED)

WEEK ENDING	October 30	October 23	Change	October 16	Prior Year¹
Pandemic Unemployment Assistance	2,195	2,821	-626	2,565	359,496

WEEK ENDING	October 23	October 16	Change	Prior Year¹
Federal Employees (UCFE)	742	818	-76	2,176
Newly Discharged Veterans (UCX)	407	486	-79	909

CONTINUED WEEKS CLAIMED FILED FOR UI BENEFITS IN ALL PROGRAMS (UNADJUSTED)

WEEK ENDING	October 16	October 9	Change	Prior Year¹
Regular State	1,980,615	2,161,098	-180,483	7,405,128
Federal Employees	7,985	7,712	+273	12,102
Newly Discharged Veterans	5,428	5,203	+225	12,398
Pandemic Unemployment Assistance ³	277,109	270,013	+7,096	9,522,295
Pandemic Emergency UC ⁴	233,684	244,379	-10,695	4,301,105
Extended Benefits ⁵	144,319	117,559	+26,760	579,659
State Additional Benefits ⁶	2,933	2,445	+488	2,806
STC / Workshare ⁷	20,875	22,270	-1,395	178,444
TOTAL⁸	2,672,948	2,830,679	-157,731	22,013,937

FOOTNOTES

SA - Seasonally Adjusted Data, NSA - Not Seasonally Adjusted Data Continued weeks claimed represent all weeks of benefits claimed during the week being reported, and do not represent weeks claimed by unique individuals.

1. Prior year is comparable to most recent data.
2. Most recent week used covered employment of 135,015,266 as denominator.
3. Information on the Pandemic Unemployment Assistance (PUA) program can be found in UIPL 16-20: [PUA Program information](#)
4. Information on the Pandemic Emergency Unemployment Compensation (PEUC) program can be found in Unemployment Insurance Program Letter (UIPL) 17-20: [PEUC Program information](#)
5. Information on the EB program can be found here: [EB Program information](#)
6. Some states maintain additional benefit programs for those claimants who exhaust regular benefits, and when applicable, extended benefits. Information on states that participate, and the extent of benefits paid, can be found starting on page 4-4 of this link: [Extensions and Special Programs PDF](#)
7. Information on STC/Worksharing can be found starting on page 9-10 of the following link: [Extensions and Special Programs PDF](#)
8. Totals include PUA Unemployment for the appropriate corresponding week.

Advance State Claims - Not Seasonally Adjusted

STATE	Initial Claims Filed During Week Ended October 30			Insured Unemployment For Week Ended October 23		
	Advance	Prior Wk	Change	Advance	Prior Wk	Change
Alabama	3,552	3,327	225	4,352	5,610	-1,258
Alaska	1,560	1,338	222	6,462	6,624	-162
Arizona	2,551	2,845	-294	16,781	19,846	-3,065
Arkansas	1,034	1,335	-301	10,258	11,018	-760
California	62,266	59,747	2,519	459,890	461,609	-1,719
Colorado	1,983	2,032	-49	23,581	22,956	625
Connecticut	2,419	2,354	65	23,860	25,081	-1,221
Delaware	327	303	24	4,483	4,229	254
District of Columbia	5,236	6,443	-1,207	12,690	11,789	901
Florida	5,958	8,788	-2,830	51,928	54,019	-2,091
Georgia	3,899	4,471	-572	36,709	40,289	-3,580
Hawaii	1,712	1,863	-151	11,936	13,975	-2,039
Idaho	968	922	46	2,716	2,837	-121
Illinois	8,417	7,719	698	122,494	150,920	-28,426
Indiana	3,279	3,137	142	27,936	28,577	-641
Iowa	2,172	2,030	142	9,034	8,935	99
Kansas	994	856	138	5,416	5,583	-167
Kentucky	7,235	4,373	2,862	12,554	11,504	1,050
Louisiana	2,783	2,102	681	23,317	26,314	-2,997
Maine	804	697	107	4,504	4,526	-22
Maryland	2,794	3,243	-449	28,063	29,738	-1,675
Massachusetts	5,807	5,681	126	52,167	52,295	-128
Michigan	11,234	12,125	-891	43,072	50,937	-7,865
Minnesota	4,952	3,909	1,043	44,349	42,174	2,175
Mississippi	1,009	1,223	-214	6,302	7,329	-1,027
Missouri	3,265	6,282	-3,017	15,514	15,815	-301
Montana	1,041	1,003	38	3,585	3,609	-24
Nebraska	750	1,411	-661	3,558	3,369	189
Nevada	2,434	2,551	-117	25,527	28,192	-2,665
New Hampshire	394	462	-68	2,373	2,681	-308
New Jersey	7,486	7,236	250	91,542	91,712	-170
New Mexico	2,265	3,147	-882	11,944	12,415	-471
New York	13,332	13,586	-254	151,625	157,565	-5,940
North Carolina	3,621	3,520	101	23,744	26,079	-2,335
North Dakota	329	269	60	1,350	1,299	51
Ohio	7,104	7,060	44	37,976	41,016	-3,040
Oklahoma	1,761	3,442	-1,681	14,477	16,938	-2,461
Oregon	4,315	4,409	-94	35,211	34,449	762
Pennsylvania	8,208	9,369	-1,161	92,774	105,946	-13,172
Puerto Rico	749	1,000	-251	29,559	34,151	-4,592
Rhode Island	1,121	946	175	8,196	8,231	-35
South Carolina	1,130	1,247	-117	14,114	16,249	-2,135
South Dakota	181	180	1	728	724	4
Tennessee	5,442	4,786	656	21,164	20,728	436
Texas	15,069	16,036	-967	129,790	129,462	328
Utah	1,215	1,157	58	5,786	5,963	-177
Vermont	404	364	40	2,227	2,254	-27
Virgin Islands	46	93	-47	900	866	34
Virginia	1,184	2,570	-1,386	32,986	44,840	-11,854
Washington	5,599	5,777	-178	52,608	49,002	3,606
West Virginia	751	842	-91	6,614	6,378	236
Wisconsin	5,570	5,227	343	26,839	26,524	315
Wyoming	505	495	10	1,663	1,455	208
US Total	240,216	247,330	-7,114	1,889,228	1,986,626	-97,398

Note: Advance claims are not directly comparable to claims reported in prior weeks. Advance claims are reported by the state liable for paying the unemployment compensation, whereas previous weeks reported claims reflect claimants by state of residence. In addition, claims reported as "workshare equivalent" in the previous week are added to the advance claims as a proxy for the current week's "workshare equivalent" activity.

Seasonally Adjusted US Weekly UI Claims (in thousands)

Week Ending	Initial Claims	Change from		Insured Unemployment	Change from		IUR
		Prior Week	4-Week Average		Prior Week	4-Week Average	
October 24, 2020	768	-30	795.25	7,076	-623	8,104.50	4.8
October 31, 2020	765	-3	791.00	6,724	-352	7,470.75	4.6
November 7, 2020	728	-37	764.75	6,389	-335	6,972.00	4.4
November 14, 2020	732	4	748.25	6,138	-251	6,581.75	4.2
November 21, 2020	762	30	746.75	5,606	-532	6,214.25	3.8
November 28, 2020	719	-43	735.25	5,829	223	5,990.50	4.0
December 5, 2020	853	134	766.50	5,614	-215	5,796.75	3.8
December 12, 2020	873	20	801.75	5,433	-181	5,620.50	3.7
December 19, 2020	803	-70	812.00	5,311	-122	5,546.75	3.6
December 26, 2020	763	-40	823.00	5,180	-131	5,384.50	3.5
January 2, 2021	781	18	805.00	5,240	60	5,291.00	3.7
January 9, 2021	904	123	812.75	5,061	-179	5,198.00	3.6
January 16, 2021	886	-18	833.50	4,878	-183	5,089.75	3.4
January 23, 2021	836	-50	851.75	4,791	-87	4,992.50	3.4
January 30, 2021	837	1	865.75	4,655	-136	4,846.25	3.3
February 6, 2021	863	26	855.50	4,592	-63	4,729.00	3.2
February 13, 2021	847	-16	845.75	4,469	-123	4,626.75	3.1
February 20, 2021	747	-100	823.50	4,383	-86	4,524.75	3.1
February 27, 2021	761	14	804.50	4,157	-226	4,400.25	2.9
March 6, 2021	734	-27	772.25	4,123	-34	4,283.00	2.9
March 13, 2021	765	31	751.75	3,841	-282	4,126.00	2.7
March 20, 2021	658	-107	729.50	3,753	-88	3,968.50	2.6
March 27, 2021	729	71	721.50	3,717	-36	3,858.50	2.6
April 3, 2021	742	13	723.50	3,708	-9	3,754.75	2.7
April 10, 2021	586	-156	678.75	3,652	-56	3,707.50	2.6
April 17, 2021	566	-20	655.75	3,653	1	3,682.50	2.6
April 24, 2021	590	24	621.00	3,680	27	3,673.25	2.6
May 1, 2021	507	-83	562.25	3,640	-40	3,656.25	2.6
May 8, 2021	478	-29	535.25	3,738	98	3,677.75	2.7
May 15, 2021	444	-34	504.75	3,611	-127	3,667.25	2.6
May 22, 2021	405	-39	458.50	3,769	158	3,689.50	2.7
May 29, 2021	388	-17	428.75	3,517	-252	3,658.75	2.5
June 5, 2021	374	-14	402.75	3,528	11	3,606.25	2.5
June 12, 2021	418	44	396.25	3,412	-116	3,556.50	2.5
June 19, 2021	416	-2	399.00	3,484	72	3,485.25	2.5
June 26, 2021	368	-48	394.00	3,367	-117	3,447.75	2.4
July 3, 2021	386	18	397.00	3,265	-102	3,382.00	2.4
July 10, 2021	368	-18	384.50	3,262	-3	3,344.50	2.4
July 17, 2021	424	56	386.50	3,296	34	3,297.50	2.4
July 24, 2021	399	-25	394.25	2,980	-316	3,200.75	2.2
July 31, 2021	387	-12	394.50	2,899	-81	3,109.25	2.1
August 7, 2021	377	-10	396.75	2,865	-34	3,010.00	2.1
August 14, 2021	349	-28	378.00	2,908	43	2,913.00	2.1
August 21, 2021	354	5	366.75	2,805	-103	2,869.25	2.0
August 28, 2021	345	-9	356.25	2,852	47	2,857.50	2.1
September 4, 2021	312	-33	340.00	2,715	-137	2,820.00	2.0
September 11, 2021	335	23	336.50	2,820	105	2,798.00	2.1
September 18, 2021	351	16	335.75	2,811	-9	2,799.50	2.1
September 25, 2021	364	13	340.50	2,727	-84	2,768.25	2.0
October 2, 2021	329	-35	344.75	2,603	-124	2,740.25	1.9
October 9, 2021	296	-33	335.00	2,480	-123	2,655.25	1.8
October 16, 2021	291	-5	320.00	2,239	-241	2,512.25	1.7
October 23, 2021	283	-8	299.75	2,105	-134	2,356.75	1.6
October 30, 2021	269	-14	284.75				

Pandemic Unemployment Assistance Claims - Not Seasonally Adjusted

STATE	PUA Initial Claims Filed During Week Ended October 30			PUA Continued Claims For Week Ended Oct 16		
	Advance	Prior Wk	Change	Oct 16	Oct 9	Change
Alabama	0	0	0	0	0	0
Alaska	0	0	0	33	617	-584
Arizona	0	1	-1	1,735	1,735	0
Arkansas	0	0	0	43	108	-65
California	148	167	-19	138,880	160,503	-21,623
Colorado	0	0	0	100	106	-6
Connecticut	19	22	-3	229	211	18
Delaware	2	4	-2	191	164	27
District of Columbia	31	25	6	1,706	1,112	594
Florida	0	0	0	0	0	0
Georgia	129	188	-59	5,333	4,750	583
Hawaii	0	0	0	1,723	1,796	-73
Idaho	4	4	0	0	48	-48
Illinois	2	2	0	2,109	2,108	1
Indiana	246	543	-297	831	991	-160
Iowa	33	24	9	27	10	17
Kansas	2	0	2	355	426	-71
Kentucky	404	380	24	3,388	3,329	59
Louisiana	9	10	-1	33	92	-59
Maine	37	61	-24	14	56	-42
Maryland	18	18	0	7,662	7,830	-168
Massachusetts	1	1	0	7,771	10,496	-2,725
Michigan	48	338	-290	1,227	1,603	-376
Minnesota	0	0	0	214	96	118
Mississippi	0	0	0	3	0	3
Missouri	29	25	4	1,377	1,376	1
Montana	3	1	2	57	131	-74
Nebraska	0	0	0	19	0	19
Nevada	0	0	0	0	0	0
New Hampshire	71	106	-35	28	22	6
New Jersey	57	47	10	17,995	19,308	-1,313
New Mexico	0	3	-3	224	334	-110
New York	57	49	8	32,069	19,084	12,985
North Carolina	3	1	2	834	928	-94
North Dakota	2	0	2	0	0	0
Ohio	8	21	-13	27,185	5,059	22,126
Oklahoma	0	0	0	0	0	0
Oregon	63	80	-17	1,885	5,059	-3,174
Pennsylvania	0	0	0	5,087	2,273	2,814
Puerto Rico	3	0	3	12,261	14,619	-2,358
Rhode Island	34	34	0	56	102	-46
South Carolina	2	2	0	162	73	89
South Dakota	0	0	0	0	0	0
Tennessee	29	24	5	62	36	26
Texas	48	191	-143	877	410	467
Utah	0	0	0	0	0	0
Vermont	0	2	-2	0	4	-4
Virgin Islands	0	0	0	0	0	0
Virginia	205	203	2	0	0	0
Washington	426	226	200	1,517	1,405	112
West Virginia	1	0	1	61	5	56
Wisconsin	20	18	2	1,745	1,593	152
Wyoming	1	0	1	1	5	-4
US Total	2,195	2,821	-626	277,109	270,013	7,096

Note: Information on the Pandemic Unemployment Assistance (PUA) program can be found in UIPL 16-20: [PUA Program information](#). Backdated claims may be included in these figures.

Pandemic Emergency Unemployment Compensation Continued Claims - Not Seasonally Adjusted

STATE	PEUC Claims Filed During Weeks Ended:				
	October 16	October 9	Change	October 2	September 25
Alabama	0	0	0	0	0
Alaska	53	23	30	74	31
Arizona	127	138	-11	282	334
Arkansas	186	201	-15	330	457
California	76,286	98,070	-21,784	168,898	278,068
Colorado	1,060	505	555	415	539
Connecticut	395	365	30	640	770
Delaware	485	441	44	431	407
District of Columbia	38	88	-50	27	44
Florida	0	0	0	0	0
Georgia	0	0	0	0	0
Hawaii	486	658	-172	471	978
Idaho	4	2	2	3	63
Illinois	1,190	927	263	1,499	2,019
Indiana	113	209	-96	446	2,024
Iowa	531	624	-93	754	846
Kansas	1,485	1,248	237	1,109	2,446
Kentucky	1,843	1,752	91	2,889	1,745
Louisiana	16	29	-13	39	76
Maine	7	48	-41	38	54
Maryland	4,005	3,994	11	3,824	4,430
Massachusetts	491	459	32	742	751
Michigan	246	681	-435	1,431	3,201
Minnesota	510	563	-53	415	1,876
Mississippi	0	0	0	1	2
Missouri	308	380	-72	662	1,272
Montana	21	14	7	41	23
Nebraska	8	22	-14	18	29
Nevada	0	0	0	0	0
New Hampshire	28	11	17	38	27
New Jersey	28,797	26,436	2,361	33,736	33,784
New Mexico	36	18	18	44	69
New York	63,890	63,601	289	68,766	68,888
North Carolina	329	506	-177	488	1,047
North Dakota	26	1	25	9	0
Ohio	1,631	1,079	552	3,113	2,669
Oklahoma	0	0	0	0	0
Oregon	689	1,079	-390	2,273	2,389
Pennsylvania	4,906	4,494	412	6,431	10,001
Puerto Rico	7,172	5,534	1,638	7,687	6,894
Rhode Island	35	78	-43	90	132
South Carolina	23	17	6	0	102
South Dakota	0	0	0	0	0
Tennessee	44	100	-56	83	59
Texas	754	645	109	658	658
Utah	0	0	0	0	0
Vermont	161	132	29	190	380
Virgin Islands	25	11	14	11	10
Virginia	33,087	26,744	6,343	17,825	4,246
Washington	342	54	288	268	373
West Virginia	55	8	47	4	99
Wisconsin	1,747	2,382	-635	4,366	6,114
Wyoming	13	8	5	8	9
US Total	233,684	244,379	-10,695	331,567	440,435

Note: Information on the Pandemic Emergency Unemployment Compensation (PEUC) program can be found in Unemployment Insurance Program Letter (UIPL) 17-20: [PEUC Program information](#)

Extended Benefits (EB) Continued Claims - Not Seasonally Adjusted

STATE	EB Claims Filed During Weeks Ended:		
	October 16	October 9	Change
Alabama	0	0	0
Alaska	2,197	2,237	-40
Arizona	12	14	-2
Arkansas	2	2	0
California	9,298	15,550	-6,252
Colorado	0	8	-8
Connecticut	21,821	1,168	20,653
Delaware	0	1	-1
District of Columbia	2	3	-1
Florida	243	228	15
Georgia	0	0	0
Hawaii	3	5	-2
Idaho	4	7	-3
Illinois	260	471	-211
Indiana	1	0	1
Iowa	5	6	-1
Kansas	18	7	11
Kentucky	0	0	0
Louisiana	15	9	6
Maine	6	5	1
Maryland	36	40	-4
Massachusetts	3	1	2
Michigan	23	13	10
Minnesota	21	6	15
Mississippi	5	3	2
Missouri	6	8	-2
Montana	1	1	0
Nebraska	0	0	0
Nevada	32	56	-24
New Hampshire	8	9	-1
New Jersey	100,767	88,451	12,316
New Mexico	6,773	6,571	202
New York	143	167	-24
North Carolina	70	62	8
North Dakota	0	0	0
Ohio	81	73	8
Oklahoma	0	0	0
Oregon	7	37	-30
Pennsylvania	233	148	85
Puerto Rico	232	256	-24
Rhode Island	14	29	-15
South Carolina	32	46	-14
South Dakota	0	0	0
Tennessee	0	14	-14
Texas	1,376	1,524	-148
Utah	0	0	0
Vermont	4	2	2
Virgin Islands	1	1	0
Virginia	409	260	149
Washington	0	5	-5
West Virginia	0	0	0
Wisconsin	154	54	100
Wyoming	1	1	0
US Total	144,319	117,559	26,760

Note: Information on the EB program can be found here: [EB Program information](#)

INITIAL CLAIMS FILED DURING WEEK ENDED
OCTOBER 23

INSURED UNEMPLOYMENT FOR WEEK ENDED
OCTOBER 16

STATE NAME	STATE	CHANGE FROM				STATE (%) ²	CHANGE FROM				ALL PROGRAMS EXCLUDING RAILROAD RETIREMENT	
		LAST WEEK	YEAR AGO	UCFE ¹	UCX ¹		LAST WEEK	YEAR AGO	UCFE ¹	UCX ¹		
Alabama	3,327	-168	-3,799	5	13	5,610	0.3	-217	-29,934	27	17	5,654
Alaska	1,338	27	-3,050	14	0	6,624	2.4	120	-12,350	86	11	6,721
Arizona	2,845	-160	-3,968	7	3	19,846	0.7	-563	-106,006	110	54	20,010
Arkansas	1,335	-158	-2,684	3	0	11,018	1.0	-736	-15,293	41	18	11,077
California	59,747	-13,138	-92,429	125	32	461,609	2.9	-42,828	-1,191,636	1,793	1,135	464,537
Colorado	2,032	-147	-4,039	8	9	22,956	0.9	-1,945	-82,803	173	90	23,219
Connecticut	2,354	101	-3,662	9	5	25,081	1.7	1,754	-76,029	78	37	25,196
Delaware	303	-84	-1,354	4	2	4,229	1.0	-57	-13,120	19	8	4,256
District of Columbia	6,443	3,875	4,970	10	0	11,789	2.3	-26,037	-29,628	191	3	11,983
Florida	8,788	1,307	-24,754	23	26	54,019	0.7	-4,476	-228,242	239	206	54,464
Georgia	4,471	-4,107	-39,224	18	18	40,289	1.0	-71,478	-296,449	344	127	40,760
Hawaii	1,863	49	-3,043	1	8	13,975	2.8	1,079	-56,526	89	71	14,135
Idaho	922	103	-2,941	11	2	2,837	0.4	-26	-5,187	24	5	2,866
Illinois	7,719	305	-45,419	8	4	150,920	2.8	4,501	-229,032	551	178	151,649
Indiana	3,137	-185	-10,270	5	4	28,577	1.0	-2,140	-75,400	118	38	28,733
Iowa	2,030	234	-2,321	1	5	8,935	0.6	297	-30,890	41	20	8,996
Kansas	856	-283	-9,213	2	2	5,583	0.4	-45	-27,717	30	25	5,638
Kentucky	4,373	2,940	-952	2	0	11,504	0.6	-1,664	-50,363	22	66	11,592
Louisiana	2,102	-702	-7,841	7	3	26,314	1.5	-4,991	-102,064	51	13	26,378
Maine	697	106	-782	0	0	4,526	0.8	-310	-10,760	17	7	4,550
Maryland	3,243	-234	-7,500	17	6	29,738	1.3	-1,020	-53,502	223	110	30,071
Massachusetts	5,681	973	-42,206	12	11	52,295	1.6	-927	-196,710	113	74	52,482
Michigan	12,125	-2,505	-5,957	11	11	50,937	1.3	-1,233	-184,319	45	48	51,030
Minnesota	3,909	-87	-7,772	11	6	42,174	1.6	-779	-74,682	122	79	42,375
Mississippi	1,223	-60	-2,008	2	0	7,329	0.7	-310	-39,119	48	13	7,390
Missouri	6,282	2,048	-1,520	5	0	15,815	0.6	-2,392	-40,577	91	26	15,932
Montana	1,003	-25	-2,178	51	0	3,609	0.8	352	-11,387	53	9	3,671
Nebraska	1,411	628	-137	2	2	3,369	0.4	-111	-10,369	16	6	3,391
Nevada	2,551	-303	-6,485	1	2	28,192	2.3	-1,424	-99,481	93	47	28,332
New Hampshire	462	70	-1,566	0	1	2,681	0.4	-10	-23,472	2	1	2,684
New Jersey	7,236	312	-19,967	27	17	91,712	2.5	1,408	-111,951	233	273	92,218
New Mexico	3,147	410	-671	14	1	12,415	1.7	-299	-40,131	175	29	12,619
New York	13,586	323	-38,013	22	12	157,565	1.9	-6,458	-422,559	195	260	158,020
North Carolina	3,520	-365	-6,383	3	1	26,079	0.6	-2,255	-70,840	74	104	26,257
North Dakota	269	-21	-954	2	1	1,299	0.3	16	-5,998	7	1	1,307
Ohio	7,060	-519	-10,527	12	17	41,016	0.8	-3,220	-128,768	106	110	41,232
Oklahoma	3,442	1,256	-1,573	11	6	16,938	1.1	211	-50,923	97	52	17,087
Oregon	4,409	230	-120	58	9	34,449	1.9	-1,687	-61,365	333	119	34,901
Pennsylvania	9,369	-1,245	-10,605	33	17	105,946	2.0	3,454	-228,423	221	76	106,243
Puerto Rico	1,000	80	-200	8	4	34,151	4.2	4,526	-31,347	325	114	34,590
Rhode Island	946	144	-2,181	5	6	8,231	1.9	-129	-9,716	48	56	8,335
South Carolina	1,247	187	-2,428	5	5	16,249	0.8	-1,512	-45,151	34	62	16,345
South Dakota	180	6	-302	3	1	724	0.2	69	-3,815	7	1	732
Tennessee	4,786	-794	-3,327	13	5	20,728	0.6	-1,393	-59,340	45	14	20,787
Texas	16,036	-789	-19,159	63	93	129,462	1.1	1,691	-478,193	652	1,094	131,208
Utah	1,157	-294	-1,214	31	2	5,963	0.4	85	-11,511	61	12	6,036
Vermont	364	-25	-342	0	0	2,254	0.8	61	-10,281	0	0	2,254
Virgin Islands	93	-16	-34	0	0	866	2.5	36	-2,720	0	0	866
Virginia	2,570	603	-9,782	5	4	44,840	1.3	-13,581	-82,781	197	180	45,217
Washington	5,777	863	-12,248	27	22	49,002	1.6	-3,614	-116,662	208	289	49,499
West Virginia	842	30	-1,249	4	3	6,378	1.1	73	-18,107	35	15	6,428
Wisconsin	5,227	-636	-8,313	12	6	26,524	1.0	-1,581	-73,914	68	22	26,614
Wyoming	495	-45	-634	9	0	1,455	0.6	110	-4,338	14	3	1,472
Totals	247,330	-9,885	-484,330	742	407	1,986,626	1.5	-181,605	-5,471,881	7,985	5,428	2,000,039

Figures appearing in columns showing over-the-week changes reflect all revisions in data for prior week submitted by state agencies.

1. The Unemployment Compensation program for Federal Employees (UCFE) and the Unemployment Compensation for Ex-servicemembers (UCX) exclude claims filed jointly under other programs to avoid duplication.
2. Rate is not seasonally adjusted. The source of U.S. total covered employment is BLS.

UNADJUSTED INITIAL CLAIMS FOR WEEK ENDED OCTOBER 23, 2021

STATES WITH AN INCREASE OF MORE THAN 1,000

State	Change	State Supplied Comment
DC	+3,875	No comment.
KY	+2,940	No comment.
MO	+2,048	No comment.
FL	+1,307	No comment.
OK	+1,256	No comment.

STATES WITH A DECREASE OF MORE THAN 1,000

State	Change	State Supplied Comment
CA	-13,138	Fewer layoffs in the service industry.
GA	-4,107	Fewer layoffs in the construction, manufacturing, and administrative and support and waste management and remediation services industries.
MI	-2,505	Fewer layoffs in the wholesale trade industry.
PA	-1,245	Fewer layoffs in the transportation and warehousing, other services, wholesale trade, and management of companies and enterprises industries.

TECHNICAL NOTES

This news release presents the weekly unemployment insurance (UI) claims reported by each state's unemployment insurance program offices. These claims may be used for monitoring workload volume, assessing state program operations and for assessing labor market conditions. States initially report claims directly taken by the state liable for the benefit payments, regardless of where the claimant who filed the claim resided. These are the basis for the advance initial claims and continued claims reported each week. These data come from ETA 538, Advance Weekly Initial and Continued Claims Report. The following week initial claims and continued claims are revised based on a second reporting by states that reflect the claimants by state of residence. These data come from the ETA 539, Weekly Claims and Extended Benefits Trigger Data Report.

A. Initial Claims

An initial claim is a claim filed by an unemployed individual after a separation from an employer. The claimant requests a determination of basic eligibility for the UI program. When an initial claim is filed with a state, certain programmatic activities take place and these result in activity counts including the count of initial claims. The count of U.S. initial claims for unemployment insurance is a leading economic indicator because it is an indication of emerging labor market conditions in the country. However, these are weekly administrative data which are difficult to seasonally adjust, making the series subject to some volatility.

B. Continued Weeks Claimed

A person who has already filed an initial claim and who has experienced a week of unemployment then files a continued claim to claim benefits for that week of unemployment. On a weekly basis, continued claims are also referred to as insured unemployment, as continued claims reflect a good approximation of the current number of insured unemployed workers filing for UI benefits. The count of U.S. continued weeks claimed is also a good indicator of labor market conditions. While continued claims are not a leading indicator (they roughly coincide with economic cycles at their peaks and lag at cycle troughs), they provide confirming evidence of the direction of the U.S. economy.

C. Seasonal Adjustments and Annual Revisions

Over the course of a year, the weekly changes in the levels of initial claims and continued claims undergo regularly occurring fluctuations. These fluctuations may result from seasonal changes in weather, major holidays, the opening and closing of schools, or other similar events. Because these seasonal events follow a more or less regular pattern each year, their influence on the level of a series can be tempered by adjusting for regular seasonal variation. These adjustments make trend and cycle developments easier to spot. At the beginning of each calendar year, the Bureau of Labor Statistics provides the Employment and Training Administration (ETA) with a set of seasonal factors to apply to the unadjusted data during that year. Concurrent with the implementation and release of the new seasonal factors, ETA incorporates revisions to the UI claims historical series caused by updates to the unadjusted data.

[Weekly Claims Archives](#)

[Weekly Claims Data](#)

U.S. Department of Labor news materials are accessible at <http://www.dol.gov>. The Department's [Reasonable Accommodation Resource Center](#) converts Departmental information and documents into alternative formats, which include Braille and large print. For alternative format requests, please contact the Department at (202) 693-7828 (voice) or (800) 877-8339 (federal relay).

U.S. Department of Labor
Employment and Training Administration
Washington, D.C. 20210
Release Number: USDL 21-1957-NAT

Program Contacts:
Thomas Stengle: (202) 693-2991
Media Contact: (202) 693-4676