



# News Release

Connect with DOL at <https://blog.dol.gov>



TRANSMISSION OF MATERIALS IN THIS RELEASE IS EMBARGOED UNTIL  
8:30 A.M. (Eastern) Thursday, March 11, 2021

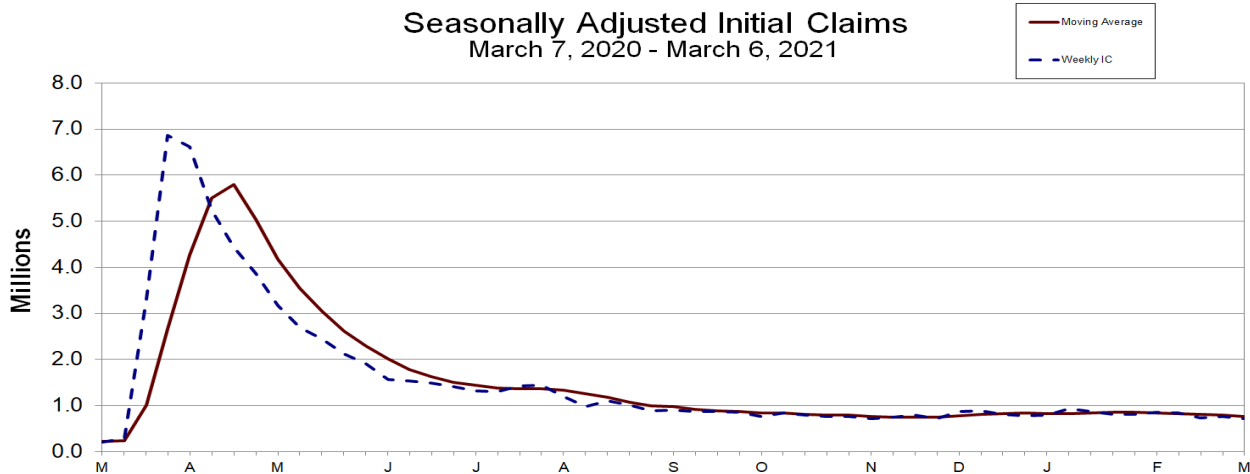
## UNEMPLOYMENT INSURANCE WEEKLY CLAIMS

### SEASONALLY ADJUSTED DATA

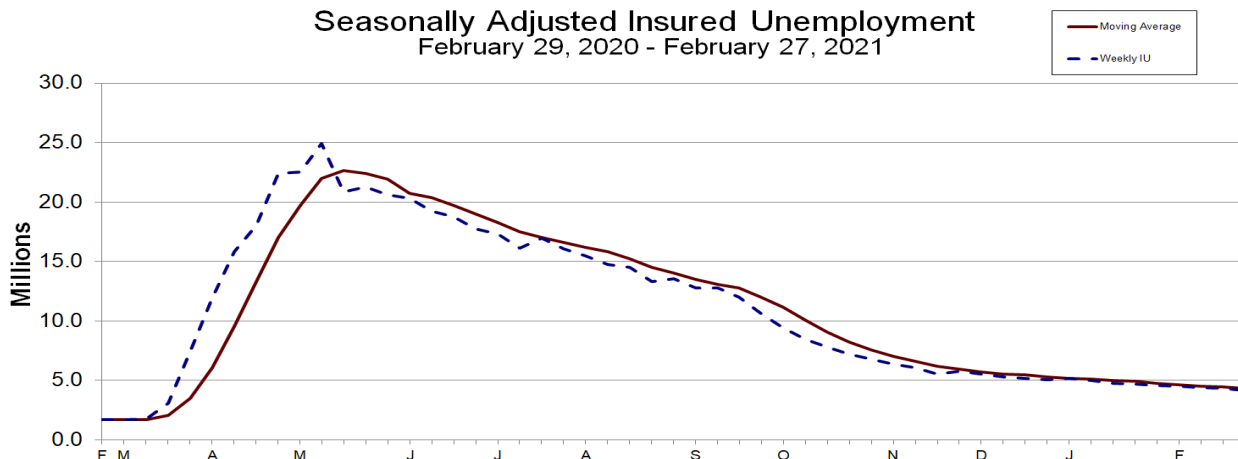
In the week ending March 6, the advance figure for seasonally adjusted **initial claims** was 712,000, a decrease of 42,000 from the previous week's revised level. The previous week's level was revised up by 9,000 from 745,000 to 754,000. The 4-week moving average was 759,000, a decrease of 34,000 from the previous week's revised average. The previous week's average was revised up by 2,250 from 790,750 to 793,000.

The advance seasonally adjusted **insured unemployment rate** was 2.9 percent for the week ending February 27, a decrease of 0.2 percentage point from the previous week's revised rate. The previous week's rate was revised up by 0.1 from 3. to 3.1 percent. The advance number for seasonally adjusted **insured unemployment** during the week ending February 27 was 4,144,000, a decrease of 193,000 from the previous week's revised level. The previous week's level was revised up 42,000 from 4,295,000 to 4,337,000. The 4-week moving average was 4,355,000, a decrease of 103,500 from the previous week's revised average. The previous week's average was revised up by 10,500 from 4,448,000 to 4,458,500.

Seasonally Adjusted Initial Claims  
March 7, 2020 - March 6, 2021



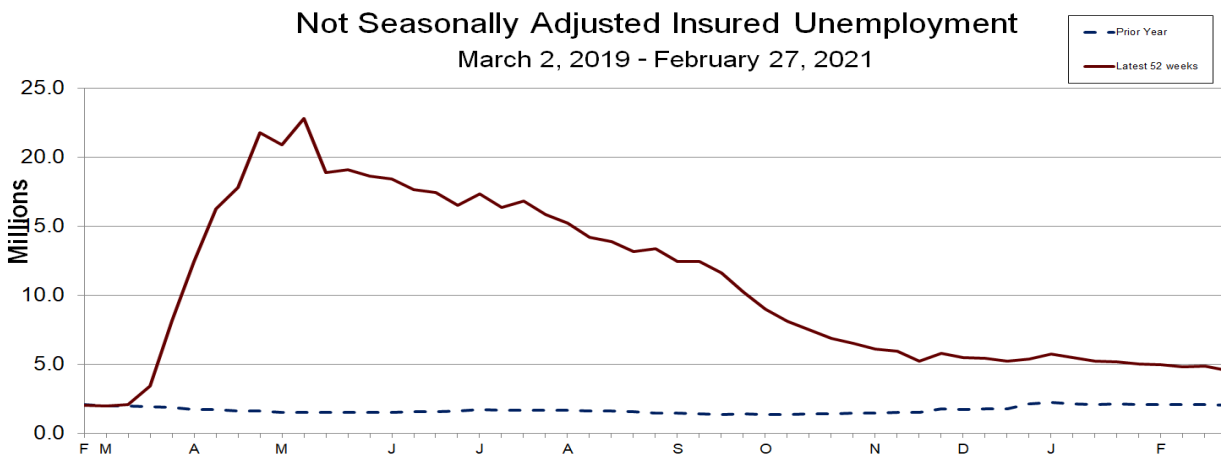
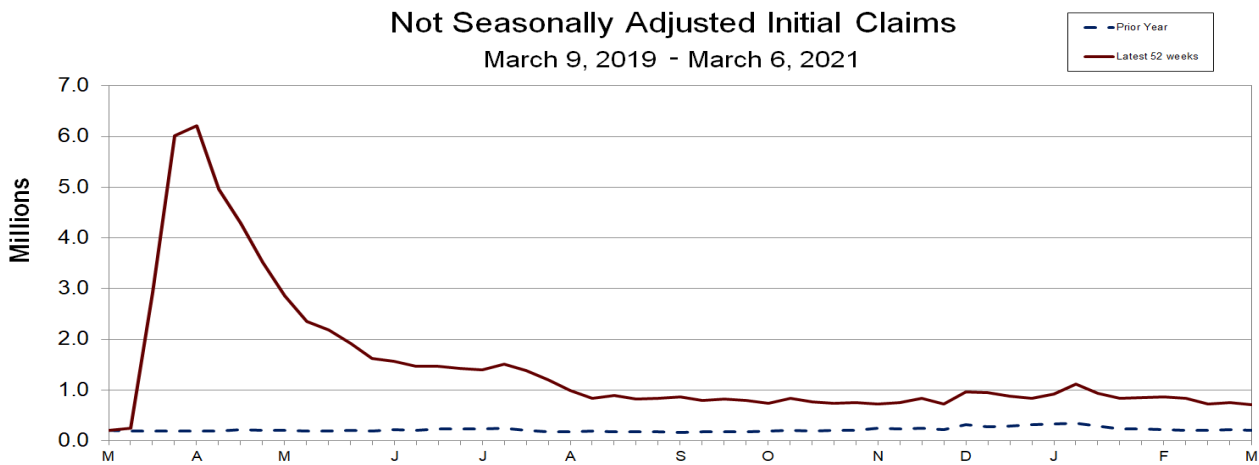
Seasonally Adjusted Insured Unemployment  
February 29, 2020 - February 27, 2021



**UNADJUSTED DATA**

The advance number of actual initial claims under state programs, unadjusted, totaled 709,458 in the week ending March 6, a decrease of 47,170 (or -6.2 percent) from the previous week. The seasonal factors had expected a decrease of 5,529 (or -0.7 percent) from the previous week. There were 200,382 initial claims in the comparable week in 2020. In addition, for the week ending March 6, 53 states reported 478,001 initial claims for Pandemic Unemployment Assistance.

The advance unadjusted insured unemployment rate was 3.2 percent during the week ending February 27, a decrease of 0.2 percentage point from the prior week. The advance unadjusted level of insured unemployment in state programs totaled 4,584,706, a decrease of 263,642 (or -5.4 percent) from the preceding week. The seasonal factors had expected a decrease of 70,936 (or -1.5 percent) from the previous week. A year earlier the rate was 1.4 percent and the volume was 2,057,280.



The total number of continued weeks claimed for benefits in all programs for the week ending February 20 was 20,116,302, an increase of 2,087,376 from the previous week. There were 2,136,741 weekly claims filed for benefits in all programs in the comparable week in 2020.

During the week ending February 20, Extended Benefits were available in the following 18 states: Alaska, California, Colorado, Connecticut, District of Columbia, Illinois, Massachusetts, Michigan, Nevada, New Jersey, New Mexico, New York, Pennsylvania, Puerto Rico, Rhode Island, Texas, the Virgin Islands, and Washington.

Initial claims for UI benefits filed by former Federal civilian employees totaled 1,384 in the week ending February 27, an increase of 178 from the prior week. There were 728 initial claims filed by newly discharged veterans, an increase of 109 from the preceding week.

There were 19,937 continued weeks claimed filed by former Federal civilian employees the week ending February 20, an increase of 506 from the previous week. Newly discharged veterans claiming benefits totaled 8,540, a decrease of 146 from the prior week.

During the week ending February 20, 51 states reported 8,387,194 continued weekly claims for Pandemic Unemployment Assistance benefits and 51 states reported 5,454,740 continued claims for Pandemic Emergency Unemployment Compensation benefits.

The highest insured unemployment rates in the week ending February 20 were in Pennsylvania (6.2), Alaska (5.9), Nevada (5.5), Connecticut (5.4), Massachusetts (5.1), New York (4.9), Rhode Island (4.9), the Virgin Islands (4.7), California (4.5), and Illinois (4.5).

The largest increases in initial claims for the week ending February 27 were in Texas (+19,897), Ohio (+18,644), New York (+12,316), Mississippi (+8,324), and West Virginia (+4,998), while the largest decreases were in Missouri (-9,878), Wisconsin (-2,940), Michigan (-2,879), Rhode Island (-2,473), and Minnesota (-2,003).

---

**UNEMPLOYMENT INSURANCE DATA FOR REGULAR STATE PROGRAMS**


---

<b>WEEK ENDING</b>	<b>March 6</b>	<b>February 27</b>	<b>Change</b>	<b>February 20</b>	<b>Prior Year<sup>1</sup></b>
Initial Claims (SA)	712,000	754,000	-42,000	736,000	211,000
Initial Claims (NSA)	709,458	756,628	-47,170	716,559	200,382
4-Wk Moving Average (SA)	759,000	793,000	-34,000	807,500	215,750

<b>WEEK ENDING</b>	<b>February 27</b>	<b>February 20</b>	<b>Change</b>	<b>February 13</b>	<b>Prior Year<sup>1</sup></b>
Insured Unemployment (SA)	4,144,000	4,337,000	-193,000	4,419,000	1,699,000
Insured Unemployment (NSA)	4,584,706	4,848,348	-263,642	4,828,679	2,057,280
4-Wk Moving Average (SA)	4,355,000	4,458,500	-103,500	4,547,000	1,710,250
Insured Unemployment Rate (SA) <sup>2</sup>	2.9%	3.1%	-0.2	3.1%	1.2%
Insured Unemployment Rate (NSA) <sup>2</sup>	3.2%	3.4%	-0.2	3.4%	1.4%

---

**INITIAL CLAIMS FILED IN FEDERAL PROGRAMS (UNADJUSTED)**


---

<b>WEEK ENDING</b>	<b>March 6</b>	<b>February 27</b>	<b>Change</b>	<b>February 20</b>
Pandemic Unemployment Assistance	478,001	436,138	+41,863	427,450

<b>WEEK ENDING</b>	<b>February 27</b>	<b>February 20</b>	<b>Change</b>	<b>Prior Year<sup>1</sup></b>
Federal Employees (UCFE)	1,384	1,206	+178	576
Newly Discharged Veterans (UCX)	728	619	+109	427

---

**CONTINUED WEEKS CLAIMED FILED FOR UI BENEFITS IN ALL PROGRAMS (UNADJUSTED)**


---

<b>WEEK ENDING</b>	<b>February 20</b>	<b>February 13</b>	<b>Change</b>	<b>Prior Year<sup>1</sup></b>
Regular State	4,808,572	4,794,195	+14,377	2,101,301
Federal Employees	19,937	19,431	+506	10,259
Newly Discharged Veterans	8,540	8,686	-146	5,567
Pandemic Unemployment Assistance <sup>3</sup>	8,387,194	7,329,172	+1,058,022	NA
Pandemic Emergency UC <sup>4</sup>	5,454,740	4,468,389	+986,351	NA
Extended Benefits <sup>5</sup>	1,320,674	1,305,204	+15,470	0
State Additional Benefits <sup>6</sup>	1,909	1,649	+260	5,628
STC / Workshare <sup>7</sup>	114,736	102,200	+12,536	13,986
<b>TOTAL<sup>8</sup></b>	<b>20,116,302</b>	<b>18,028,926</b>	<b>+2,087,376</b>	<b>2,136,741</b>

**FOOTNOTES**

SA - Seasonally Adjusted Data, NSA - Not Seasonally Adjusted Data Continued weeks claimed represent all weeks of benefits claimed during the week being reported, and do not represent weeks claimed by unique individuals.

1. Prior year is comparable to most recent data.
2. Most recent week used covered employment of 142,133,208 as denominator.
3. Information on the Pandemic Unemployment Assistance (PUA) program can be found in UIPL 16-20: [PUA Program information](#)
4. Information on the Pandemic Emergency Unemployment Compensation (PEUC) program can be found in Unemployment Insurance Program Letter (UIPL) 17-20: [PEUC Program information](#)
5. Information on the EB program can be found here: [EB Program information](#)
6. Some states maintain additional benefit programs for those claimants who exhaust regular benefits, and when applicable, extended benefits. Information on states that participate, and the extent of benefits paid, can be found starting on page 4-4 of this link: [Extensions and Special Programs PDF](#)
7. Information on STC/Worksharing can be found starting on page 4-8 of the following link: [Extensions and Special Programs PDF](#)
8. Totals include PUA Unemployment for the appropriate corresponding week.

## Advance State Claims - Not Seasonally Adjusted

STATE	Initial Claims Filed During Week Ended March 6			Insured Unemployment For Week Ended February 27		
	Advance	Prior Wk	Change	Advance	Prior Wk	Change
Alabama	12,910	11,624	1,286	14,410	18,937	-4,527
Alaska	3,532	3,781	-249	16,398	17,466	-1,068
Arizona	3,648	4,091	-443	61,984	62,964	-980
Arkansas	3,282	6,064	-2,782	22,937	27,675	-4,738
California	105,861	88,978	16,883	715,363	765,925	-50,562
Colorado	12,370	13,072	-702	93,315	75,534	17,781
Connecticut	4,916	5,780	-864	80,252	85,369	-5,117
Delaware	1,667	1,806	-139	13,352	13,969	-617
District of Columbia	1,080	1,036	44	18,978	20,609	-1,631
Florida	16,005	19,020	-3,015	128,971	156,495	-27,524
Georgia	22,540	28,387	-5,847	136,579	146,180	-9,601
Hawaii	2,434	2,668	-234	18,793	21,123	-2,330
Idaho	3,919	5,013	-1,094	13,349	15,307	-1,958
Illinois	61,624	68,111	-6,487	251,735	260,091	-8,356
Indiana	12,126	10,081	2,045	69,061	72,770	-3,709
Iowa	5,531	4,216	1,315	44,827	48,389	-3,562
Kansas	1,956	3,560	-1,604	22,259	15,520	6,739
Kentucky	9,128	13,857	-4,729	44,147	38,708	5,439
Louisiana	5,015	6,981	-1,966	45,699	53,212	-7,513
Maine	1,394	1,677	-283	15,813	17,239	-1,426
Maryland	6,781	7,879	-1,098	54,872	62,508	-7,636
Massachusetts	15,956	14,770	1,186	142,268	174,019	-31,751
Michigan	10,284	11,497	-1,213	152,795	178,216	-25,421
Minnesota	8,062	8,806	-744	110,727	111,807	-1,080
Mississippi	7,015	17,952	-10,937	29,155	47,365	-18,210
Missouri	6,578	9,288	-2,710	52,407	69,683	-17,276
Montana	1,329	1,433	-104	16,333	16,841	-508
Nebraska	1,548	1,718	-170	14,766	15,735	-969
Nevada	11,125	9,208	1,917	69,821	72,547	-2,726
New Hampshire	2,482	2,447	35	24,819	25,207	-388
New Jersey	8,711	10,385	-1,674	127,101	132,451	-5,350
New Mexico	3,631	3,150	481	32,757	34,974	-2,217
New York	47,162	60,130	-12,968	430,744	443,907	-13,163
North Carolina	7,325	7,971	-646	56,118	63,209	-7,091
North Dakota	599	638	-39	10,003	9,762	241
Ohio	126,894	120,506	6,388	181,870	192,240	-10,370
Oklahoma	5,558	7,193	-1,635	27,555	35,394	-7,839
Oregon	6,814	8,165	-1,351	76,251	72,949	3,302
Pennsylvania	20,214	24,106	-3,892	305,153	308,232	-3,079
Puerto Rico	1,186	1,279	-93	26,304	32,678	-6,374
Rhode Island	4,680	5,787	-1,107	20,771	22,155	-1,384
South Carolina	6,302	3,903	2,399	41,987	43,518	-1,531
South Dakota	248	441	-193	5,707	5,966	-259
Tennessee	7,407	10,778	-3,371	48,824	58,673	-9,849
Texas	45,284	56,298	-11,014	325,261	318,548	6,713
Utah	2,457	2,222	235	15,039	15,885	-846
Vermont	917	1,003	-86	12,529	12,087	442
Virgin Islands	106	131	-25	1,978	1,740	238
Virginia	19,605	12,155	7,450	63,875	63,998	-123
Washington	12,212	13,502	-1,290	147,036	139,141	7,895
West Virginia	7,304	7,793	-489	23,613	23,519	94
Wisconsin	11,998	13,310	-1,312	102,186	104,274	-2,088
Wyoming	746	981	-235	5,859	5,638	221
US Total	709,458	756,628	-47,170	4,584,706	4,848,348	-263,642

Note: Advance claims are not directly comparable to claims reported in prior weeks. Advance claims are reported by the state liable for paying the unemployment compensation, whereas previous weeks reported claims reflect claimants by state of residence. In addition, claims reported as "workshare equivalent" in the previous week are added to the advance claims as a proxy for the current week's "workshare equivalent" activity.

## Seasonally Adjusted US Weekly UI Claims (in thousands)

Week Ending	Change from			Insured Unemployment	Change from		IUR
	Initial Claims	Prior Week	4-Week Average		Prior Week	4-Week Average	
February 29, 2020	217	-3	214.00	1,699	-21	1,710.25	1.2
March 7, 2020	211	-6	215.75	1,702	3	1,703.50	1.2
March 14, 2020	282	71	232.50	1,784	82	1,726.25	1.2
March 21, 2020	3,307	3,025	1,004.25	3,059	1,275	2,061.00	2.1
March 28, 2020	6,867	3,560	2,666.75	7,446	4,387	3,497.75	5.1
April 4, 2020	6,615	-252	4,267.75	11,914	4,468	6,050.75	8.2
April 11, 2020	5,237	-1,378	5,506.50	15,819	3,905	9,559.50	10.9
April 18, 2020	4,442	-795	5,790.25	18,011	2,192	13,297.50	12.4
April 25, 2020	3,867	-575	5,040.25	22,377	4,366	17,030.25	15.4
May 2, 2020	3,176	-691	4,180.50	22,548	171	19,688.75	15.5
May 9, 2020	2,687	-489	3,543.00	24,912	2,364	21,962.00	17.1
May 16, 2020	2,446	-241	3,044.00	20,841	-4,071	22,669.50	14.3
May 23, 2020	2,123	-323	2,608.00	21,268	427	22,392.25	14.6
May 30, 2020	1,897	-226	2,288.25	20,606	-662	21,906.75	14.1
June 6, 2020	1,566	-331	2,008.00	20,289	-317	20,751.00	13.9
June 13, 2020	1,540	-26	1,781.50	19,231	-1,058	20,348.50	13.2
June 20, 2020	1,482	-58	1,621.25	18,760	-471	19,721.50	12.9
June 27, 2020	1,408	-74	1,499.00	17,760	-1,000	19,010.00	12.2
July 4, 2020	1,310	-98	1,435.00	17,304	-456	18,263.75	11.8
July 11, 2020	1,308	-2	1,377.00	16,151	-1,153	17,493.75	11.1
July 18, 2020	1,422	114	1,362.00	16,951	800	17,041.50	11.6
July 25, 2020	1,435	13	1,368.75	16,090	-861	16,624.00	11.0
August 1, 2020	1,191	-244	1,339.00	15,480	-610	16,168.00	10.6
August 8, 2020	971	-220	1,254.75	14,759	-721	15,820.00	10.1
August 15, 2020	1,104	133	1,175.25	14,492	-267	15,205.25	9.9
August 22, 2020	1,011	-93	1,069.25	13,292	-1,200	14,505.75	9.1
August 29, 2020	884	-127	992.50	13,544	252	14,021.75	9.3
September 5, 2020	893	9	973.00	12,747	-797	13,518.75	8.7
September 12, 2020	866	-27	913.50	12,747	0	13,082.50	8.7
September 19, 2020	873	7	879.00	11,979	-768	12,754.25	8.2
September 26, 2020	849	-24	870.25	10,594	-1,385	12,016.75	7.2
October 3, 2020	767	-82	838.75	9,398	-1,196	11,179.50	6.4
October 10, 2020	842	75	832.75	8,472	-926	10,110.75	5.8
October 17, 2020	797	-45	813.75	7,823	-649	9,071.75	5.3
October 24, 2020	758	-39	791.00	7,222	-601	8,228.75	4.9
October 31, 2020	757	-1	788.50	6,798	-424	7,578.75	4.6
November 7, 2020	711	-46	755.75	6,370	-428	7,053.25	4.3
November 14, 2020	748	37	743.50	6,089	-281	6,619.75	4.2
November 21, 2020	787	39	750.75	5,527	-562	6,196.00	3.8
November 28, 2020	716	-71	740.50	5,781	254	5,941.75	3.9
December 5, 2020	862	146	778.25	5,507	-274	5,726.00	3.8
December 12, 2020	892	30	814.25	5,322	-185	5,534.25	3.6
December 19, 2020	806	-86	819.00	5,198	-124	5,452.00	3.5
December 26, 2020	782	-24	835.50	5,072	-126	5,274.75	3.5
January 2, 2021	784	2	816.00	5,175	103	5,191.75	3.6
January 9, 2021	927	143	824.75	4,975	-200	5,105.00	3.5
January 16, 2021	875	-52	842.00	4,785	-190	5,001.75	3.4
January 23, 2021	812	-63	849.50	4,691	-94	4,906.50	3.3
January 30, 2021	812	0	856.50	4,558	-133	4,752.25	3.2
February 6, 2021	848	36	836.75	4,520	-38	4,638.50	3.2
February 13, 2021	834	-14	826.50	4,419	-101	4,547.00	3.1
February 20, 2021	736	-98	807.50	4,337	-82	4,458.50	3.1
February 27, 2021	754	18	793.00	4,144	-193	4,355.00	2.9
March 6, 2021	712	-42	759.00				

## Pandemic Unemployment Assistance Claims - Not Seasonally Adjusted

STATE	PUA Initial Claims Filed During Week Ended March 6			PUA Continued Claims For Week Ended Feb 20		
	Advance	Prior Wk	Change	Feb 20	Feb 13	Change
Alabama	2,373	1,846	527	29,749	29,030	719
Alaska	483	519	-36	9,840	10,490	-650
Arizona	1,228	847	381	84,027	84,560	-533
Arkansas	913	899	14	57,298	41,556	15,742
California	36,756	27,062	9,694	1,938,650	1,043,343	895,307
Colorado	1,454	9,916	-8,462	47,789	32,427	15,362
Connecticut	449	474	-25	38,552	37,973	579
Delaware	65	67	-2	5,031	5,031	0
District of Columbia	104	161	-57	15,519	15,265	254
Florida	2,925	2,262	663	0	0	0
Georgia	2,459	2,365	94	177,602	183,272	-5,670
Hawaii	622	775	-153	61,953	42,894	19,059
Idaho	27	111	-84	6,973	7,743	-770
Illinois	15,561	13,677	1,884	205,319	205,149	170
Indiana	20,487	14,948	5,539	203,892	174,867	29,025
Iowa	656	694	-38	12,641	14,298	-1,657
Kansas	522	766	-244	21,842	28,256	-6,414
Kentucky	14,128	10,005	4,123	25,900	25,473	427
Louisiana	1,175	769	406	111,705	113,825	-2,120
Maine	126	200	-74	13,697	13,279	418
Maryland	5,010	3,364	1,646	208,455	195,106	13,349
Massachusetts	3,572	4,849	-1,277	456,752	281,090	175,662
Michigan	3,723	4,046	-323	221,061	499,826	-278,765
Minnesota	4	1	3	41,964	43,593	-1,629
Mississippi	754	865	-111	31,649	32,361	-712
Missouri	1,085	1,259	-174	41,280	41,056	224
Montana	549	852	-303	18,864	17,148	1,716
Nebraska	69	82	-13	3,339	3,418	-79
Nevada	5,152	6,740	-1,588	79,600	89,282	-9,682
New Hampshire	58	41	17	10,894	10,442	452
New Jersey	4,544	5,409	-865	356,264	353,360	2,904
New Mexico	1,397	1,185	212	38,380	40,349	-1,969
New York	46,990	42,301	4,689	1,255,245	1,243,020	12,225
North Carolina	3,495	3,813	-318	97,809	97,494	315
North Dakota	247	262	-15	3,546	4,388	-842
Ohio	261,694	245,796	15,898	727,159	719,612	7,547
Oklahoma	475	548	-73	18,542	19,039	-497
Oregon	12,857	6,951	5,906	146,556	102,837	43,719
Pennsylvania	5,324	789	4,535	399,591	365,885	33,706
Puerto Rico	1,995	2,122	-127	199,275	203,806	-4,531
Rhode Island	3,042	3,407	-365	40,901	41,450	-549
South Carolina	1,813	2,033	-220	53,344	53,633	-289
South Dakota	12	18	-6	527	446	81
Tennessee	1,451	455	996	65,642	71,367	-5,725
Texas	4,202	4,826	-624	490,054	384,839	105,215
Utah	434	483	-49	2,387	2,619	-232
Vermont	58	56	2	8,761	8,650	111
Virgin Islands	19	31	-12	0	0	0
Virginia	1,434	1,469	-35	172,540	167,657	4,883
Washington	2,360	2,312	48	104,174	103,735	439
West Virginia	523	134	389	10,358	10,523	-165
Wisconsin	989	969	20	12,666	12,407	259
Wyoming	157	307	-150	1,636	3	1,633
US Total	478,001	436,138	41,863	8,387,194	7,329,172	1,058,022

Note: Information on the Pandemic Unemployment Assistance (PUA) program can be found in UIPL 16-20: [PUA Program information](#). Backdated claims may be included in these figures.

## Pandemic Emergency Unemployment Compensation Continued Claims - Not Seasonally Adjusted

STATE	PEUC Claims Filed During Weeks Ended:				
	February 20	February 13	Change	February 6	January 30
Alabama	62,895	61,730	1,165	61,142	59,958
Alaska	15,289	13,777	1,512	12,321	6,515
Arizona	75,982	71,918	4,064	71,540	69,093
Arkansas	23,792	16,859	6,933	23,653	26,860
California	1,793,290	813,651	979,639	1,504,898	648,806
Colorado	74,893	21,652	53,241	25,767	39,657
Connecticut	80,858	71,767	9,091	74,410	74,061
Delaware	13,063	12,569	494	12,603	12,452
District of Columbia	10,110	10,926	-816	12,829	13,730
Florida	0	0	0	0	0
Georgia	0	0	0	0	0
Hawaii	60,347	55,428	4,919	27,512	27,708
Idaho	7,992	7,122	870	6,943	5,720
Illinois	250,834	251,700	-866	236,759	246,696
Indiana	80,427	79,817	610	80,829	86,086
Iowa	72,604	46,909	25,695	8,584	9,750
Kansas	5,470	1,664	3,806	268	326
Kentucky	36,783	39,672	-2,889	37,114	38,284
Louisiana	80,650	78,092	2,558	78,033	74,267
Maine	19,647	19,292	355	19,185	18,810
Maryland	80,169	80,310	-141	79,391	79,507
Massachusetts	83,638	86,831	-3,193	88,654	97,474
Michigan	128,905	237,242	-108,337	96,516	138,935
Minnesota	140,119	139,207	912	140,100	133,717
Mississippi	30,035	30,781	-746	35,044	28,712
Missouri	24,226	22,519	1,707	23,619	25,007
Montana	9,519	9,089	430	9,257	8,991
Nebraska	5,504	5,156	348	4,932	3,523
Nevada	56,295	56,507	-212	59,448	62,347
New Hampshire	11,390	11,118	272	10,901	10,593
New Jersey	213,885	255,935	-42,050	362,036	99,708
New Mexico	24,025	23,087	938	16,572	15,399
New York	775,548	754,700	20,848	762,088	757,368
North Carolina	198,159	193,528	4,631	193,039	189,576
North Dakota	8,079	8,220	-141	8,607	9,445
Ohio	136,221	131,907	4,314	134,240	136,890
Oklahoma	48,365	49,336	-971	48,556	47,902
Oregon	83,270	76,994	6,276	75,271	73,647
Pennsylvania	258,073	264,750	-6,677	244,796	240,354
Puerto Rico	80,800	64,351	16,449	87,091	93,376
Rhode Island	18,029	17,417	612	17,248	16,639
South Carolina	85,691	86,981	-1,290	87,667	90,528
South Dakota	1,409	1,162	247	1,219	1,136
Tennessee	61,083	59,696	1,387	60,185	57,795
Texas	10,947	10,394	553	7,466	14,133
Utah	12,931	12,690	241	12,447	12,290
Vermont	13,881	13,376	505	13,567	13,249
Virgin Islands	20	96	-76	27	42
Virginia	35,203	37,021	-1,818	38,033	89,523
Washington	3,133	3,153	-20	3,542	3,991
West Virginia	22,370	21,709	661	22,084	22,033
Wisconsin	23,538	23,458	80	24,603	25,623
Wyoming	5,354	5,123	231	4,887	3,957
US Total	5,454,740	4,468,389	986,351	5,067,523	4,062,189

Note: Information on the Pandemic Emergency Unemployment Compensation (PEUC) program can be found in Unemployment Insurance Program Letter (UIPL) 17-20: [PEUC Program information](#)



## Extended Benefits (EB) Continued Claims - Not Seasonally Adjusted

STATE	EB Claims Filed During Weeks Ended:		
	February 20	February 13	Change
Alabama	0	0	0
Alaska	770	938	-168
Arizona	9,784	10,661	-877
Arkansas	87	84	3
California	380,193	419,067	-38,874
Colorado	288	782	-494
Connecticut	13,833	13,162	671
Delaware	3	7	-4
District of Columbia	19	37	-18
Florida	0	0	0
Georgia	0	0	0
Hawaii	107	100	7
Idaho	69	59	10
Illinois	65,832	61,635	4,197
Indiana	37	6	31
Iowa	58	61	-3
Kansas	905	555	350
Kentucky	0	0	0
Louisiana	88	101	-13
Maine	84	107	-23
Maryland	1	1,109	-1,108
Massachusetts	60,546	62,134	-1,588
Michigan	89,314	96,002	-6,688
Minnesota	10	1	9
Mississippi	247	232	15
Missouri	470	101	369
Montana	46	36	10
Nebraska	0	0	0
Nevada	78,221	76,143	2,078
New Hampshire	200	248	-48
New Jersey	75,184	72,382	2,802
New Mexico	21,088	21,581	-493
New York	221,960	187,227	34,733
North Carolina	1,216	1,531	-315
North Dakota	4	11	-7
Ohio	179	100	79
Oklahoma	0	0	0
Oregon	15,646	16,533	-887
Pennsylvania	52,170	74,619	-22,449
Puerto Rico	29,246	11,415	17,831
Rhode Island	7,324	7,669	-345
South Carolina	162	139	23
South Dakota	0	0	0
Tennessee	121	156	-35
Texas	169,005	139,940	29,065
Utah	0	0	0
Vermont	29	40	-11
Virgin Islands	26	48	-22
Virginia	743	977	-234
Washington	24,106	26,182	-2,076
West Virginia	14	18	-4
Wisconsin	1,231	1,252	-21
Wyoming	8	16	-8
US Total	1,320,674	1,305,204	15,470

Note: Information on the EB program can be found here: [EB Program information](#)

INITIAL CLAIMS FILED DURING WEEK ENDED  
FEBRUARY 27

INSURED UNEMPLOYMENT FOR WEEK ENDED  
FEBRUARY 20

STATE NAME	STATE	CHANGE FROM				STATE (%) <sup>2</sup>	CHANGE FROM				ALL PROGRAMS EXCLUDING RAILROAD RETIREMENT	
		LAST WEEK	YEAR AGO	UCFE <sup>1</sup>	UCX <sup>1</sup>		LAST WEEK	YEAR AGO	UCFE <sup>1</sup>	UCX <sup>1</sup>		
Alabama	11,624	229	10,049	17	12	18,937	1.0	2,313	4,216	89	31	19,057
Alaska	3,781	-213	2,907	10	2	17,466	5.9	488	8,528	277	29	17,772
Arizona	4,091	-17	1,005	11	3	62,964	2.2	-1,849	44,827	288	136	63,388
Arkansas	6,064	4,175	4,646	5	2	27,675	2.4	8,697	15,431	162	44	27,881
California	88,978	-1,487	47,300	261	101	765,925	4.5	-26,195	395,937	4,482	1,584	771,991
Colorado	13,072	-1,930	11,391	1	3	75,534	2.9	3,583	53,125	259	177	75,970
Connecticut	5,780	-972	2,937	18	10	85,369	5.4	7,650	43,201	313	76	85,758
Delaware	1,806	73	1,282	4	4	13,969	3.1	640	7,227	59	41	14,069
District of Columbia	1,036	65	584	51	0	20,609	3.7	-50	13,589	855	10	21,474
Florida	19,020	390	14,167	48	74	156,495	1.8	-5,386	123,074	464	341	157,300
Georgia	28,387	2,940	22,849	84	37	146,180	3.4	10,117	119,222	647	327	147,154
Hawaii	2,668	-178	1,619	10	6	21,123	3.6	533	15,172	188	91	21,402
Idaho	5,013	-1,097	4,015	16	2	15,307	2.1	-56	4,720	340	12	15,659
Illinois	68,111	-272	59,131	13	11	260,091	4.5	-8,831	127,968	768	220	261,079
Indiana	10,081	346	7,805	28	9	72,770	2.5	-898	49,776	256	126	73,152
Iowa	4,216	-976	1,976	6	4	48,389	3.2	-369	17,873	125	35	48,549
Kansas	3,560	-852	2,043	0	0	15,520	1.2	-14,168	4,015	44	14	15,578
Kentucky	13,857	-282	11,634	2	3	38,708	2.1	-3,093	14,975	74	129	38,911
Louisiana	6,981	534	5,472	12	10	53,212	2.9	491	37,923	102	20	53,334
Maine	1,677	-521	815	3	0	17,239	2.9	103	8,232	63	16	17,318
Maryland	7,879	-541	5,253	16	2	62,508	2.6	-945	34,096	313	45	62,866
Massachusetts	14,770	-1,548	9,905	21	8	174,019	5.1	17,491	90,799	393	104	174,516
Michigan	11,497	-2,879	6,078	1	0	178,216	4.3	9,387	99,646	249	76	178,541
Minnesota	8,806	-2,003	5,396	11	8	111,807	4.0	-5,652	50,111	209	90	112,106
Mississippi	17,952	8,324	17,208	7	2	47,365	4.4	19,684	39,523	152	24	47,541
Missouri	9,288	-9,878	6,556	6	1	69,683	2.6	10,387	42,734	141	25	69,849
Montana	1,433	-186	738	37	1	16,841	3.7	-427	5,545	570	19	17,430
Nebraska	1,718	-255	1,216	1	0	15,735	1.6	95	9,449	23	10	15,768
Nevada	9,208	1,699	6,884	4	6	72,547	5.5	913	52,503	186	110	72,843
New Hampshire	2,447	-486	1,553	5	3	25,207	4.0	-391	21,159	39	5	25,251
New Jersey	10,385	-383	2,612	17	9	132,451	3.4	532	21,549	473	229	133,153
New Mexico	3,150	7	2,469	2	1	34,974	4.4	-1,052	24,935	440	71	35,485
New York	60,130	12,316	28,922	37	25	443,907	4.9	5,568	261,216	399	430	444,736
North Carolina	7,971	-503	6,204	24	40	63,209	1.5	-3,012	42,021	256	247	63,712
North Dakota	638	-220	275	4	1	9,762	2.4	-111	2,967	13	8	9,783
Ohio	120,506	18,644	110,590	17	26	192,240	3.6	453	121,585	295	200	192,735
Oklahoma	7,193	1,212	5,735	9	4	35,394	2.3	276	18,465	143	50	35,587
Oregon	8,165	719	4,229	38	14	72,949	3.9	2,140	42,784	1,000	117	74,066
Pennsylvania	24,106	-945	12,061	120	35	308,232	6.2	-7,822	173,137	1,199	383	309,814
Puerto Rico	1,279	4	-17	1	0	32,678	3.9	3,751	13,198	434	64	33,176
Rhode Island	5,787	-2,473	4,913	1	1	22,155	4.9	-998	9,771	90	22	22,267
South Carolina	3,903	378	1,926	6	8	43,518	2.1	844	27,739	46	74	43,638
South Dakota	441	-55	282	4	0	5,966	1.4	467	2,850	96	2	6,064
Tennessee	10,778	-1,805	8,764	14	9	58,673	1.8	7,529	38,260	94	57	58,824
Texas	56,298	19,897	43,606	312	199	318,548	2.6	-7,740	185,301	1,004	1,694	321,246
Utah	2,222	-305	1,337	16	3	15,885	1.1	-169	4,434	216	24	16,125
Vermont	1,003	226	140	1	0	12,087	4.2	-208	7,048	24	0	12,111
Virgin Islands	131	0	94	0	0	1,740	4.7	-60	1,178	0	0	1,740
Virginia	12,155	211	8,888	7	3	63,998	1.7	-577	41,795	312	229	64,539
Washington	13,502	-1,129	7,732	17	24	139,141	4.2	-2,835	80,555	723	559	140,423
West Virginia	7,793	4,998	6,685	4	1	23,519	3.7	2,323	6,722	222	30	23,771
Wisconsin	13,310	-2,940	7,652	16	1	104,274	3.8	-3,942	60,700	226	79	104,579
Wyoming	981	13	510	8	0	5,638	2.2	50	2,095	102	4	5,744
Totals	756,628	40,069	540,023	1,384	728	4,848,348	3.4	19,669	2,744,901	19,937	8,540	4,876,825

Figures appearing in columns showing over-the-week changes reflect all revisions in data for prior week submitted by state agencies.

1. The Unemployment Compensation program for Federal Employees (UCFE) and the Unemployment Compensation for Ex-servicemembers (UCX) exclude claims filed jointly under other programs to avoid duplication.
2. Rate is not seasonally adjusted. The source of U.S. total covered employment is BLS.

**UNADJUSTED INITIAL CLAIMS FOR WEEK ENDED FEBRUARY 27, 2021**

---

**STATES WITH AN INCREASE OF MORE THAN 1,000**

---

<b>State</b>	<b>Change</b>	<b>State Supplied Comment</b>
TX	+19,897	Layoffs in the manufacturing, accommodation and food services, transportation and warehousing, and healthcare and social assistance industries.
OH	+18,644	No comment.
NY	+12,316	Layoffs in the transportation and warehousing, accommodation and food services, and educational services industries.
MS	+8,324	No comment.
WV	+4,998	Layoffs in the information and management of companies and enterprises industries.
AR	+4,175	No comment.
GA	+2,940	Layoffs in the manufacturing and retail trade industries.
NV	+1,699	No comment.
OK	+1,212	No comment.

**STATES WITH A DECREASE OF MORE THAN 1,000**

---

<b>State</b>	<b>Change</b>	<b>State Supplied Comment</b>
MO	-9,878	Fewer layoffs in the manufacturing, construction and transportation and warehousing industries.
WI	-2,940	Fewer layoffs in the construction and manufacturing industries.
MI	-2,879	Fewer layoffs in the wholesale trade industry.
RI	-2,473	No comment.
MN	-2,003	No comment.
CO	-1,930	No comment.
TN	-1,805	No comment.
MA	-1,548	No comment.
CA	-1,487	No comment.
WA	-1,129	No comment.
ID	-1,097	No comment.

## TECHNICAL NOTES

This news release presents the weekly unemployment insurance (UI) claims reported by each state's unemployment insurance program offices. These claims may be used for monitoring workload volume, assessing state program operations and for assessing labor market conditions. States initially report claims directly taken by the state liable for the benefit payments, regardless of where the claimant who filed the claim resided. These are the basis for the advance initial claims and continued claims reported each week. These data come from ETA 538, Advance Weekly Initial and Continued Claims Report. The following week initial claims and continued claims are revised based on a second reporting by states that reflect the claimants by state of residence. These data come from the ETA 539, Weekly Claims and Extended Benefits Trigger Data Report.

### A. Initial Claims

An initial claim is a claim filed by an unemployed individual after a separation from an employer. The claimant requests a determination of basic eligibility for the UI program. When an initial claim is filed with a state, certain programmatic activities take place and these result in activity counts including the count of initial claims. The count of U.S. initial claims for unemployment insurance is a leading economic indicator because it is an indication of emerging labor market conditions in the country. However, these are weekly administrative data which are difficult to seasonally adjust, making the series subject to some volatility.

### B. Continued Weeks Claimed

A person who has already filed an initial claim and who has experienced a week of unemployment then files a continued claim to claim benefits for that week of unemployment. On a weekly basis, continued claims are also referred to as insured unemployment, as continued claims reflect a good approximation of the current number of insured unemployed workers filing for UI benefits. The count of U.S. continued weeks claimed is also a good indicator of labor market conditions. While continued claims are not a leading indicator (they roughly coincide with economic cycles at their peaks and lag at cycle troughs), they provide confirming evidence of the direction of the U.S. economy.

### C. Seasonal Adjustments and Annual Revisions

Over the course of a year, the weekly changes in the levels of initial claims and continued claims undergo regularly occurring fluctuations. These fluctuations may result from seasonal changes in weather, major holidays, the opening and closing of schools, or other similar events. Because these seasonal events follow a more or less regular pattern each year, their influence on the level of a series can be tempered by adjusting for regular seasonal variation. These adjustments make trend and cycle developments easier to spot. At the beginning of each calendar year, the Bureau of Labor Statistics provides the Employment and Training Administration (ETA) with a set of seasonal factors to apply to the unadjusted data during that year. Concurrent with the implementation and release of the new seasonal factors, ETA incorporates revisions to the UI claims historical series caused by updates to the unadjusted data.

[Weekly Claims Archives](#)

[Weekly Claims Data](#)

U.S. Department of Labor news materials are accessible at <http://www.dol.gov>. The Department's [Reasonable Accommodation Resource Center](#) converts Departmental information and documents into alternative formats, which include Braille and large print. For alternative format requests, please contact the Department at (202) 693-7828 (voice) or (800) 877-8339 (federal relay).

U.S. Department of Labor  
Employment and Training Administration  
Washington, D.C. 20210  
Release Number: USDL 21-420-NAT

Program Contacts:  
Thomas Stengle: (202) 693-2991  
Media Contact: (202) 693-4676