



News Release

Connect with DOL at
<https://blog.dol.gov>



TRANSMISSION OF MATERIALS IN THIS RELEASE IS EMBARGOED
UNTIL 8:30 A.M. (Eastern) Thursday, February 18, 2021

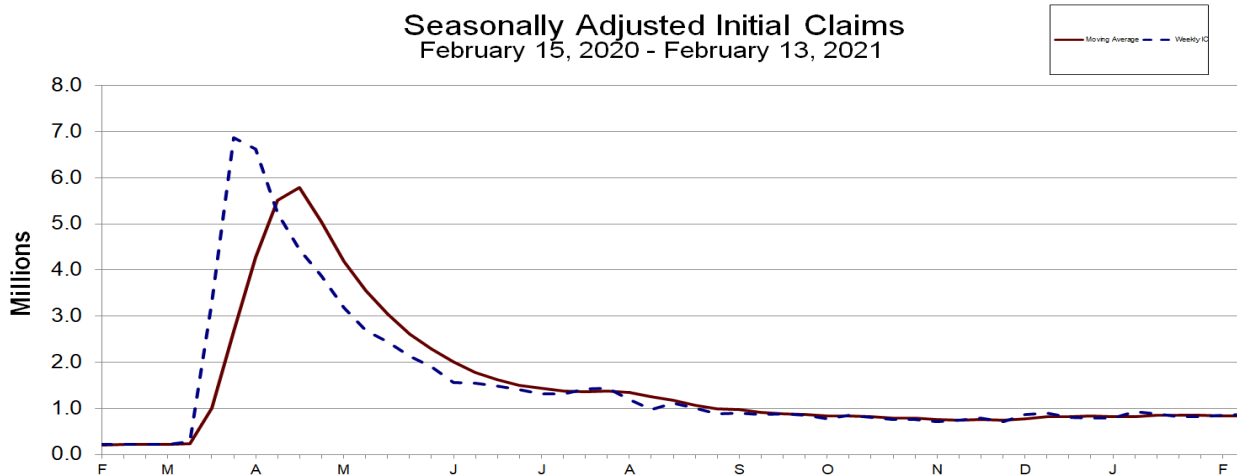
UNEMPLOYMENT INSURANCE WEEKLY CLAIMS

SEASONALLY ADJUSTED DATA

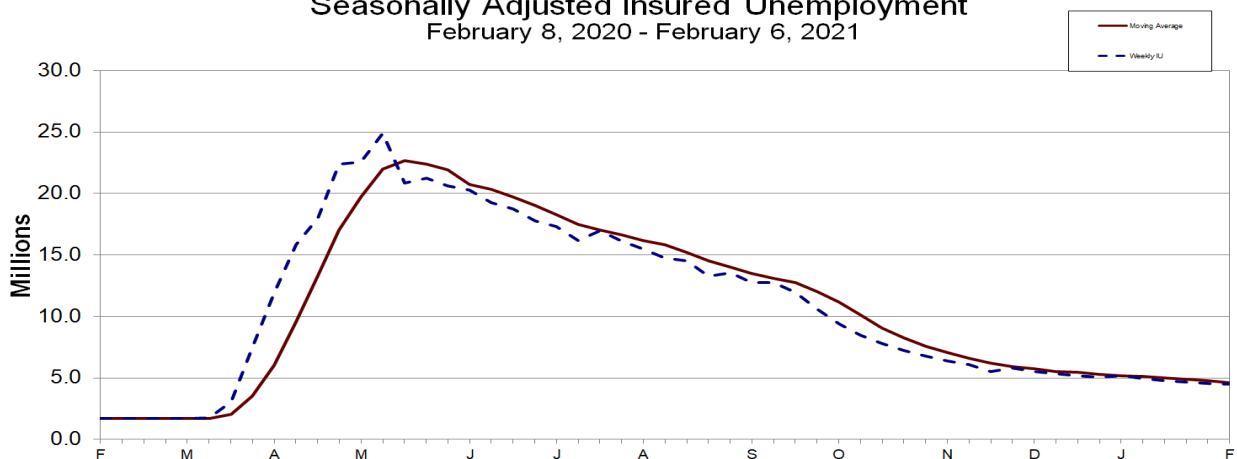
In the week ending February 13, the advance figure for seasonally adjusted **initial claims** was 861,000, an increase of 13,000 from the previous week's revised level. The previous week's level was revised up by 55,000 from 793,000 to 848,000. The 4-week moving average was 833,250, a decrease of 3,500 from the previous week's revised average. The previous week's average was revised up by 13,750 from 823,000 to 836,750.

The advance seasonally adjusted **insured unemployment rate** was 3.2 percent for the week ending February 6, unchanged from the previous week's unrevised rate. The advance number for seasonally adjusted **insured unemployment** during the week ending February 6 was 4,494,000, a decrease of 64,000 from the previous week's revised level. The previous week's level was revised up 13,000 from 4,545,000 to 4,558,000. The 4-week moving average was 4,632,000, a decrease of 120,250 from the previous week's revised average. The previous week's average was revised up by 3,500 from 4,748,750 to 4,752,250.

Seasonally Adjusted Initial Claims
February 15, 2020 - February 13, 2021



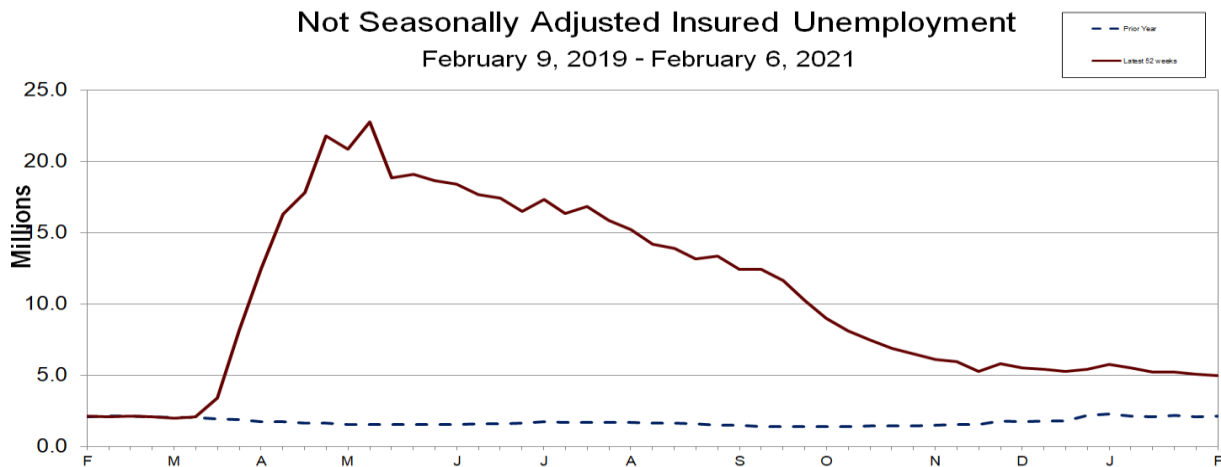
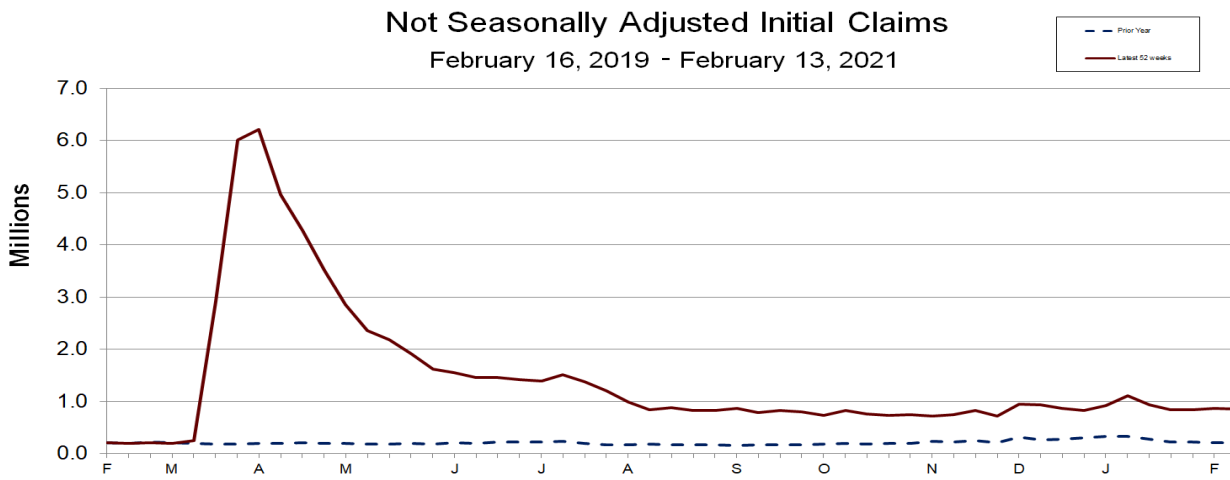
Seasonally Adjusted Insured Unemployment
February 8, 2020 - February 6, 2021



UNADJUSTED DATA

The advance number of actual initial claims under state programs, unadjusted, totaled 862,351 in the week ending February 13, a decrease of 5,702 (or -0.7 percent) from the previous week. The seasonal factors had expected a decrease of 18,432 (or -2.1 percent) from the previous week. There were 209,336 initial claims in the comparable week in 2020. In addition, for the week ending February 13, 50 states reported 516,299 initial claims for Pandemic Unemployment Assistance.

The advance unadjusted insured unemployment rate was 3.5 percent during the week ending February 6, unchanged from the prior week. The advance unadjusted level of insured unemployment in state programs totaled 4,945,014, a decrease of 93,576 (or -1.9 percent) from the preceding week. The seasonal factors had expected a decrease of 29,048 (or -0.6 percent) from the previous week. A year earlier the rate was 1.4 percent and the volume was 2,099,073.



The total number of continued weeks claimed for benefits in all programs for the week ending January 30 was 18,340,161, a decrease of 1,325,567 from the previous week. There were 2,118,115 weekly claims filed for benefits in all programs in the comparable week in 2020.

During the week ending January 30, Extended Benefits were available in the following 20 states: Alaska, California, Connecticut, District of Columbia, Hawaii, Illinois, Massachusetts, Michigan, Nevada, New Jersey, New Mexico, New York, North Carolina, Oregon, Pennsylvania, Puerto Rico, Rhode Island, Texas, the Virgin Islands, and Washington.

Initial claims for UI benefits filed by former Federal civilian employees totaled 1,660 in the week ending February 6, a decrease of 3,330 from the prior week. There were 934 initial claims filed by newly discharged veterans, a decrease of 122 from the preceding week.

There were 19,429 continued weeks claimed filed by former Federal civilian employees the week ending January 30, an increase of 258 from the previous week. Newly discharged veterans claiming benefits totaled 8,329, a decrease of 842 from the prior week.

During the week ending January 30, 51 states reported 7,685,389 continued weekly claims for Pandemic Unemployment Assistance benefits and 51 states reported 4,061,305 continued claims for Pandemic Emergency Unemployment Compensation benefits.

The highest insured unemployment rates in the week ending January 30 were in the Virgin Islands (6.6), Alaska (6.4), Pennsylvania (6.4), Rhode Island (6.1), Nevada (6.0), Connecticut (5.3), Illinois (5.1), New York (5.1), New Mexico (5.0), and Massachusetts (4.9).

The largest increases in initial claims for the week ending February 6 were in Ohio (+92,667), California (+28,688), Georgia (+5,171), Mississippi (+3,796), and Colorado (+3,045), while the largest decreases were in Florida (-47,430), New York (-17,407), Maryland (-16,585), Kansas (-12,376), and Arizona (-7,478).

UNEMPLOYMENT INSURANCE DATA FOR REGULAR STATE PROGRAMS

WEEK ENDING	February 13	February 6	Change	January 30	Prior Year ¹
Initial Claims (SA)	861,000	848,000	+13,000	812,000	215,000
Initial Claims (NSA)	862,351	868,053	-5,702	849,650	209,336
4-Wk Moving Average (SA)	833,250	836,750	-3,500	856,500	208,000

WEEK ENDING	February 6	January 30	Change	January 23	Prior Year ¹
Insured Unemployment (SA)	4,494,000	4,558,000	-64,000	4,691,000	1,729,000
Insured Unemployment (NSA)	4,945,014	5,038,590	-93,576	5,193,812	2,099,073
4-Wk Moving Average (SA)	4,632,000	4,752,250	-120,250	4,906,500	1,716,000
Insured Unemployment Rate (SA) ²	3.2%	3.2%	0.0	3.3%	1.2%
Insured Unemployment Rate (NSA) ²	3.5%	3.5%	0.0	3.7%	1.4%

INITIAL CLAIMS FILED IN FEDERAL PROGRAMS (UNADJUSTED)

WEEK ENDING	February 13	February 6	Change	January 30
Pandemic Unemployment Assistance	516,299	341,872	+174,427	368,972

WEEK ENDING	February 6	January 30	Change	Prior Year ¹
Federal Employees (UCFE)	1,660	4,990	-3,330	663
Newly Discharged Veterans (UCX)	934	1,056	-122	532

CONTINUED WEEKS CLAIMED FILED FOR UI BENEFITS IN ALL PROGRAMS (UNADJUSTED)

WEEK ENDING	January 30	January 23	Change	Prior Year ¹
Regular State	5,003,107	5,156,985	-153,878	2,084,231
Federal Employees	19,429	19,171	+258	11,456
Newly Discharged Veterans	8,329	9,171	-842	5,493
Pandemic Unemployment Assistance ³	7,685,389	7,943,448	-258,059	NA
Pandemic Emergency UC ⁴	4,061,305	4,779,341	-718,036	NA
Extended Benefits ⁵	1,456,461	1,653,350	-196,889	0
State Additional Benefits ⁶	1,799	1,670	+129	5,606
STC / Workshare ⁷	104,342	102,592	+1,750	11,329
TOTAL ⁸	18,340,161	19,665,728	-1,325,567	2,118,115

FOOTNOTES

SA - Seasonally Adjusted Data, NSA - Not Seasonally Adjusted Data Continued weeks claimed represent all weeks of benefits claimed during the week being reported, and do not represent weeks claimed by unique individuals.

1. Prior year is comparable to most recent data.
2. Most recent week used covered employment of 142,133,208 as denominator.
3. Information on the Pandemic Unemployment Assistance (PUA) program can be found in UIPL 16-20: [PUA Program information](#)
4. Information on the Pandemic Emergency Unemployment Compensation (PEUC) program can be found in Unemployment Insurance Program Letter (UIPL) 17-20: [PEUC Program information](#)
5. Information on the EB program can be found here: [EB Program information](#)
6. Some states maintain additional benefit programs for those claimants who exhaust regular benefits, and when applicable, extended benefits. Information on states that participate, and the extent of benefits paid, can be found starting on page 4-4 of this link: [Extensions and Special Programs PDF](#)
7. Information on STC/Worksharing can be found starting on page 4-8 of the following link: [Extensions and Special Programs PDF](#)
8. Totals include PUA Unemployment for the appropriate corresponding week.

Advance State Claims - Not Seasonally Adjusted

STATE	Initial Claims Filed During Week Ended February 13			Insured Unemployment For Week Ended February 6		
	Advance	Prior Wk	Change	Advance	Prior Wk	Change
Alabama	11,542	13,464	-1,922	14,253	17,537	-3,284
Alaska	3,697	3,997	-300	17,402	19,042	-1,640
Arizona	3,507	7,670	-4,163	98,967	69,884	29,083
Arkansas	2,694	4,331	-1,637	20,147	24,244	-4,097
California*	158,596	137,939	20,657	702,798	771,537	-68,739
Colorado	12,974	14,091	-1,117	71,287	72,839	-1,552
Connecticut	6,150	7,243	-1,093	82,050	84,529	-2,479
Delaware	1,934	2,342	-408	14,586	13,786	800
District of Columbia	1,168	1,480	-312	21,658	22,777	-1,119
Florida	18,982	21,710	-2,728	204,030	187,474	16,556
Georgia	26,504	32,386	-5,882	141,436	157,518	-16,082
Hawaii	3,894	3,624	270	22,524	23,741	-1,217
Idaho	10,924	6,457	4,467	14,275	14,846	-571
Illinois	67,750	34,259	33,491	279,648	292,788	-13,140
Indiana	12,970	13,508	-538	76,455	79,295	-2,840
Iowa	6,320	6,120	200	47,614	48,028	-414
Kansas	6,685	5,591	1,094	14,911	23,841	-8,930
Kentucky	11,844	10,712	1,132	46,006	40,867	5,139
Louisiana	6,246	9,010	-2,764	53,055	60,711	-7,656
Maine	1,955	2,172	-217	16,705	18,206	-1,501
Maryland	18,146	19,770	-1,624	61,000	74,667	-13,667
Massachusetts	17,153	20,500	-3,347	155,074	167,637	-12,563
Michigan	15,507	19,881	-4,374	186,485	186,687	-202
Minnesota	11,697	12,247	-550	121,375	121,069	306
Mississippi	6,001	7,538	-1,537	26,505	28,809	-2,304
Missouri	12,825	12,213	612	53,430	57,592	-4,162
Montana	1,961	2,158	-197	17,247	17,525	-278
Nebraska	2,281	2,473	-192	15,453	16,654	-1,201
Nevada	8,257	9,953	-1,696	73,861	79,798	-5,937
New Hampshire	3,777	3,594	183	26,374	27,182	-808
New Jersey	10,962	16,205	-5,243	140,945	137,483	3,462
New Mexico	4,153	3,709	444	37,317	39,129	-1,812
New York	57,547	59,983	-2,436	458,060	462,385	-4,325
North Carolina	8,642	12,694	-4,052	65,775	71,727	-5,952
North Dakota	1,061	1,154	-93	10,621	9,690	931
Ohio	146,426	140,488	5,938	172,258	164,536	7,722
Oklahoma	4,859	7,201	-2,342	28,178	37,651	-9,473
Oregon	7,527	8,847	-1,320	82,027	81,207	820
Pennsylvania	28,121	31,730	-3,609	326,512	318,600	7,912
Puerto Rico *	1,304	1,409	-105	40,353	32,944	7,409
Rhode Island	11,455	17,724	-6,269	28,232	27,681	551
South Carolina	4,475	6,339	-1,864	43,982	47,634	-3,652
South Dakota	542	646	-104	5,640	5,579	61
Tennessee	8,116	10,761	-2,645	51,070	55,379	-4,309
Texas	34,594	47,022	-12,428	355,321	337,647	17,674
Utah	2,799	3,268	-469	16,443	16,855	-412
Vermont	941	1,156	-215	13,096	13,150	-54
Virgin Islands	111	168	-57	2,362	2,438	-76
Virginia *	21,267	14,203	7,064	67,332	65,091	2,241
Washington	14,080	16,254	-2,174	165,341	158,407	6,934
West Virginia	2,296	2,722	-426	24,643	21,907	2,736
Wisconsin	16,217	15,040	1,177	106,815	104,706	2,109
Wyoming	915	897	18	6,080	5,654	426
US Total	862,351	868,053	-5,702	4,945,014	5,038,590	-93,576

Note: Advance claims are not directly comparable to claims reported in prior weeks. Advance claims are reported by the state liable for paying the unemployment compensation, whereas previous weeks reported claims reflect claimants by state of residence. In addition, claims reported as "workshare equivalent" in the previous week are added to the advance claims as a proxy for the current week's "workshare equivalent" activity.

*Denotes state estimate.

Seasonally Adjusted US Weekly UI Claims (in thousands)

Week Ending	Change from			Insured Unemployment	Change from		IUR
	Initial Claims	Prior Week	4-Week Average		Prior Week	4-Week Average	
February 8, 2020	204	3	209.25	1,729	51	1,716.00	1.2
February 15, 2020	215	11	208.00	1,693	-36	1,713.25	1.2
February 22, 2020	220	5	210.00	1,720	27	1,705.00	1.2
February 29, 2020	217	-3	214.00	1,699	-21	1,710.25	1.2
March 7, 2020	211	-6	215.75	1,702	3	1,703.50	1.2
March 14, 2020	282	71	232.50	1,784	82	1,726.25	1.2
March 21, 2020	3,307	3,025	1,004.25	3,059	1,275	2,061.00	2.1
March 28, 2020	6,867	3,560	2,666.75	7,446	4,387	3,497.75	5.1
April 4, 2020	6,615	-252	4,267.75	11,914	4,468	6,050.75	8.2
April 11, 2020	5,237	-1,378	5,506.50	15,819	3,905	9,559.50	10.9
April 18, 2020	4,442	-795	5,790.25	18,011	2,192	13,297.50	12.4
April 25, 2020	3,867	-575	5,040.25	22,377	4,366	17,030.25	15.4
May 2, 2020	3,176	-691	4,180.50	22,548	171	19,688.75	15.5
May 9, 2020	2,687	-489	3,543.00	24,912	2,364	21,962.00	17.1
May 16, 2020	2,446	-241	3,044.00	20,841	-4,071	22,669.50	14.3
May 23, 2020	2,123	-323	2,608.00	21,268	427	22,392.25	14.6
May 30, 2020	1,897	-226	2,288.25	20,606	-662	21,906.75	14.1
June 6, 2020	1,566	-331	2,008.00	20,289	-317	20,751.00	13.9
June 13, 2020	1,540	-26	1,781.50	19,231	-1,058	20,348.50	13.2
June 20, 2020	1,482	-58	1,621.25	18,760	-471	19,721.50	12.9
June 27, 2020	1,408	-74	1,499.00	17,760	-1,000	19,010.00	12.2
July 4, 2020	1,310	-98	1,435.00	17,304	-456	18,263.75	11.8
July 11, 2020	1,308	-2	1,377.00	16,151	-1,153	17,493.75	11.1
July 18, 2020	1,422	114	1,362.00	16,951	800	17,041.50	11.6
July 25, 2020	1,435	13	1,368.75	16,090	-861	16,624.00	11.0
August 1, 2020	1,191	-244	1,339.00	15,480	-610	16,168.00	10.6
August 8, 2020	971	-220	1,254.75	14,759	-721	15,820.00	10.1
August 15, 2020	1,104	133	1,175.25	14,492	-267	15,205.25	9.9
August 22, 2020	1,011	-93	1,069.25	13,292	-1,200	14,505.75	9.1
August 29, 2020	884	-127	992.50	13,544	252	14,021.75	9.3
September 5, 2020	893	9	973.00	12,747	-797	13,518.75	8.7
September 12, 2020	866	-27	913.50	12,747	0	13,082.50	8.7
September 19, 2020	873	7	879.00	11,979	-768	12,754.25	8.2
September 26, 2020	849	-24	870.25	10,594	-1,385	12,016.75	7.2
October 3, 2020	767	-82	838.75	9,398	-1,196	11,179.50	6.4
October 10, 2020	842	75	832.75	8,472	-926	10,110.75	5.8
October 17, 2020	797	-45	813.75	7,823	-649	9,071.75	5.3
October 24, 2020	758	-39	791.00	7,222	-601	8,228.75	4.9
October 31, 2020	757	-1	788.50	6,798	-424	7,578.75	4.6
November 7, 2020	711	-46	755.75	6,370	-428	7,053.25	4.3
November 14, 2020	748	37	743.50	6,089	-281	6,619.75	4.2
November 21, 2020	787	39	750.75	5,527	-562	6,196.00	3.8
November 28, 2020	716	-71	740.50	5,781	254	5,941.75	3.9
December 5, 2020	862	146	778.25	5,507	-274	5,726.00	3.8
December 12, 2020	892	30	814.25	5,322	-185	5,534.25	3.6
December 19, 2020	806	-86	819.00	5,198	-124	5,452.00	3.5
December 26, 2020	782	-24	835.50	5,072	-126	5,274.75	3.5
January 2, 2021	784	2	816.00	5,175	103	5,191.75	3.6
January 9, 2021	927	143	824.75	4,975	-200	5,105.00	3.5
January 16, 2021	875	-52	842.00	4,785	-190	5,001.75	3.4
January 23, 2021	812	-63	849.50	4,691	-94	4,906.50	3.3
January 30, 2021	812	0	856.50	4,558	-133	4,752.25	3.2
February 6, 2021	848	36	836.75	4,494	-64	4,632.00	3.2
February 13, 2021	861	13	833.25				

Pandemic Unemployment Assistance Claims - Not Seasonally Adjusted

STATE	PUA Initial Claims Filed During Week Ended February 13			PUA Continued Claims For Week Ended Jan 30		
	Advance	Prior Wk	Change	Jan 30	Jan 23	Change
Alabama	2,241	2,032	209	29,558	28,991	567
Alaska	524	488	36	12,532	14,957	-2,425
Arizona	1,949	2,492	-543	83,679	82,784	895
Arkansas	1,135	1,708	-573	77,294	20,731	56,563
California	38,052	35,956	2,096	988,681	1,884,207	-895,526
Colorado	0	30,659	-30,659	35,758	0	35,758
Connecticut	525	544	-19	36,932	36,532	400
Delaware	76	97	-21	5,579	5,292	287
District of Columbia	163	175	-12	15,755	15,281	474
Florida	3,705	6,982	-3,277	0	0	0
Georgia	2,522	2,583	-61	416,070	95,158	320,912
Hawaii	653	807	-154	45,845	50,408	-4,563
Idaho	72	94	-22	9,592	11,326	-1,734
Illinois	14,822	6,038	8,784	197,770	154,043	43,727
Indiana	9,123	7,492	1,631	258,801	240,697	18,104
Iowa	782	938	-156	14,534	14,435	99
Kansas	2,411	3,573	-1,162	40,546	30,057	10,489
Kentucky	71,529	63,999	7,530	18,217	16,298	1,919
Louisiana	2,416	2,979	-563	115,315	117,825	-2,510
Maine	454	265	189	13,094	13,138	-44
Maryland	8,876	5,130	3,746	258,122	224,274	33,848
Massachusetts	3,358	4,257	-899	305,230	314,419	-9,189
Michigan	6,151	8,397	-2,246	558,646	157,710	400,936
Minnesota	0	4	-4	46,612	43,246	3,366
Mississippi	1,217	885	332	31,994	32,137	-143
Missouri	1,296	1,339	-43	42,524	44,419	-1,895
Montana	531	1,667	-1,136	17,944	18,513	-569
Nebraska	140	147	-7	3,360	3,005	355
Nevada	12,432	35,460	-23,028	118,806	118,708	98
New Hampshire	283	289	-6	12,891	13,076	-185
New Jersey	5,534	5,046	488	374,632	357,517	17,115
New Mexico	1,231	1,282	-51	25,528	24,527	1,001
New York	36,713	41,926	-5,213	1,280,228	1,390,139	-109,911
North Carolina	4,670	5,807	-1,137	100,128	98,490	1,638
North Dakota	709	15	694	5,996	2,809	3,187
Ohio	232,016	10,156	221,860	481,052	497,905	-16,853
Oklahoma	527	536	-9	17,231	17,761	-530
Oregon	1,535	403	1,132	88,165	101,711	-13,546
Pennsylvania	17,612	18,629	-1,017	410,529	454,905	-44,376
Puerto Rico	4,276	3,883	393	267,257	241,314	25,943
Rhode Island	4,817	5,953	-1,136	41,633	41,604	29
South Carolina	2,573	3,041	-468	51,723	60,203	-8,480
South Dakota	6	6	0	503	197	306
Tennessee	2,494	3,103	-609	73,201	73,084	117
Texas	4,669	4,961	-292	345,008	450,868	-105,860
Utah	565	773	-208	3,199	3,563	-364
Vermont	57	59	-2	8,739	8,713	26
Virgin Islands	27	32	-5	0	0	0
Virginia	3,553	2,779	774	166,840	175,511	-8,671
Washington	2,642	3,156	-514	106,609	112,692	-6,083
West Virginia	1,295	1,360	-65	10,844	11,764	-920
Wisconsin	1,340	1,490	-150	14,649	16,489	-1,840
Wyoming	0	0	0	14	15	-1
US Total	516,299	341,872	174,427	7,685,389	7,943,448	-258,059

Note: Information on the Pandemic Unemployment Assistance (PUA) program can be found in UIPL 16-20: [PUA Program information](#). Backdated claims may be included in these figures.

Pandemic Emergency Unemployment Compensation Continued Claims - Not Seasonally Adjusted

STATE	PEUC Claims Filed During Weeks Ended:				
	January 30	January 23	Change	January 16	January 9
Alabama	59,958	58,687	1,271	57,017	56,610
Alaska	6,515	6,218	297	6,151	6,460
Arizona	69,093	68,070	1,023	69,834	68,262
Arkansas	26,860	27,610	-750	18,710	2,820
California	648,806	1,598,317	-949,511	518,616	1,082,797
Colorado	39,657	0	39,657	0	0
Connecticut	74,061	71,434	2,627	68,073	61,863
Delaware	12,452	12,102	350	10,771	10,208
District of Columbia	13,730	14,556	-826	17,427	17,670
Florida	0	0	0	0	0
Georgia	0	0	0	0	0
Hawaii	27,708	32,758	-5,050	28,412	38,908
Idaho	5,720	4,446	1,274	3,884	3,685
Illinois	246,696	158,051	88,645	168,674	192,069
Indiana	86,086	121,526	-35,440	159,518	13,950
Iowa	9,750	11,713	-1,963	13,200	14,751
Kansas	326	480	-154	411	953
Kentucky	38,284	35,635	2,649	34,089	31,635
Louisiana	74,267	69,954	4,313	61,499	55,020
Maine	18,810	18,572	238	18,144	17,850
Maryland	79,507	78,644	863	77,309	74,356
Massachusetts	97,474	103,695	-6,221	110,905	120,621
Michigan	138,935	106,443	32,492	238,351	95,654
Minnesota	133,717	134,915	-1,198	136,100	127,336
Mississippi	28,712	29,026	-314	27,513	33,124
Missouri	25,007	24,507	500	22,699	25,372
Montana	8,991	8,897	94	8,127	7,644
Nebraska	3,523	2,626	897	2,118	1,635
Nevada	62,347	65,308	-2,961	69,128	74,167
New Hampshire	10,593	10,009	584	9,595	9,089
New Jersey	99,708	108,941	-9,233	114,746	127,219
New Mexico	15,399	15,368	31	13,462	15,307
New York	757,368	717,842	39,526	685,738	668,401
North Carolina	189,576	183,121	6,455	118,591	106,703
North Dakota	9,445	12,785	-3,340	6,413	3,925
Ohio	136,890	117,154	19,736	55,460	58,645
Oklahoma	47,018	47,613	-595	47,218	45,747
Oregon	73,647	68,809	4,838	61,431	42,435
Pennsylvania	240,354	245,231	-4,877	170,998	179,183
Puerto Rico	93,376	39,874	53,502	42,321	51,577
Rhode Island	16,639	16,483	156	15,705	15,712
South Carolina	90,528	95,596	-5,068	79,183	72,522
South Dakota	1,136	1,115	21	982	702
Tennessee	57,795	53,415	4,380	49,571	63,520
Texas	14,133	15,879	-1,746	26,226	17,256
Utah	12,290	11,938	352	10,694	9,383
Vermont	13,249	12,721	528	12,428	12,761
Virgin Islands	42	36	6	49	35
Virginia	89,523	87,459	2,064	87,600	105,850
Washington	3,991	4,245	-254	4,159	4,735
West Virginia	22,033	21,647	386	20,506	19,632
Wisconsin	25,623	24,150	1,473	25,122	27,183
Wyoming	3,957	3,720	237	16	66
US Total	4,061,305	4,779,341	-718,036	3,604,894	3,893,008

Note: Information on the Pandemic Emergency Unemployment Compensation (PEUC) program can be found in Unemployment Insurance Program Letter (UIPL) 17-20: [PEUC Program information](#)

Extended Benefits (EB) Continued Claims - Not Seasonally Adjusted

STATE	EB Claims Filed During Weeks Ended:		
	January 30	January 23	Change
Alabama	0	0	0
Alaska	2,919	2,653	266
Arizona	12,124	12,474	-350
Arkansas	87	95	-8
California	440,886	418,005	22,881
Colorado	330	254	76
Connecticut	15,672	17,080	-1,408
Delaware	17	14	3
District of Columbia	23	21	2
Florida	0	0	0
Georgia	0	0	0
Hawaii	114	103	11
Idaho	62	72	-10
Illinois	60,067	142,635	-82,568
Indiana	95	82	13
Iowa	90	129	-39
Kansas	657	529	128
Kentucky	0	0	0
Louisiana	232	4,369	-4,137
Maine	101	197	-96
Maryland	1,038	4	1,034
Massachusetts	117,745	117,745	0
Michigan	107,278	144,743	-37,465
Minnesota	7	4	3
Mississippi	229	251	-22
Missouri	146	481	-335
Montana	56	60	-4
Nebraska	26	17	9
Nevada	70,327	66,066	4,261
New Hampshire	269	449	-180
New Jersey	79,007	81,955	-2,948
New Mexico	29,361	28,895	466
New York	195,010	198,104	-3,094
North Carolina	7,252	11,883	-4,631
North Dakota	5	6	-1
Ohio	309	321	-12
Oklahoma	0	0	0
Oregon	18,421	20,519	-2,098
Pennsylvania	80,477	90,856	-10,379
Puerto Rico	5,784	5,565	219
Rhode Island	8,348	8,580	-232
South Carolina	169	223	-54
South Dakota	0	0	0
Tennessee	141	169	-28
Texas	168,785	238,717	-69,932
Utah	0	0	0
Vermont	52	64	-12
Virgin Islands	1	0	1
Virginia	1,035	990	45
Washington	30,095	35,643	-5,548
West Virginia	22	17	5
Wisconsin	1,569	2,294	-725
Wyoming	21	17	4
US Total	1,456,461	1,653,350	-196,889

Note: Information on the EB program can be found here: [EB Program information](#)

STATE NAME	INITIAL CLAIMS FILED DURING WEEK ENDED FEBRUARY 6							INSURED UNEMPLOYMENT FOR WEEK ENDED JANUARY 30					ALL PROGRAMS EXCLUDING RAILROAD RETIREMENT
	STATE	CHANGE FROM		UCFE ¹	UCX ¹	STATE (%) ²	LAST WEEK	YEAR AGO	UCFE ¹	UCX ¹			
		LAST WEEK	YEAR AGO										
Alabama	13,464	800	11,288	44	16	17,537	0.9	918	792	77	43	17,657	
Alaska	3,997	-193	3,017	12	3	19,042	6.4	106	9,881	272	26	19,340	
Arizona	7,670	-7,478	4,034	9	1	69,884	2.4	-1,560	51,423	293	146	70,323	
Arkansas	4,331	-476	2,607	1	0	24,244	2.1	-299	11,280	169	23	24,436	
California	137,939	28,688	97,547	344	104	771,537	4.6	-6,919	412,381	3,371	1,378	776,286	
Colorado	14,091	3,045	11,609	10	3	72,839	2.8	2,368	49,958	308	180	73,327	
Connecticut	7,243	-2,801	4,299	13	2	84,529	5.3	-1,830	42,896	314	70	84,913	
Delaware	2,342	-242	1,734	3	4	13,786	3.0	-913	7,898	44	14	13,844	
District of Columbia	1,480	-19	972	116	0	22,777	4.0	-1,568	15,621	600	12	23,389	
Florida	21,710	-47,430	16,105	45	28	187,474	2.2	13,555	154,298	537	298	188,309	
Georgia	32,386	5,171	26,809	74	24	157,518	3.6	9,273	130,534	660	428	158,606	
Hawaii	3,624	-185	2,487	5	8	23,741	4.0	-1,002	17,536	211	125	24,077	
Idaho	6,457	1,598	5,014	22	1	14,846	2.0	219	3,457	381	13	15,240	
Illinois	34,259	-5,749	24,465	8	12	292,788	5.1	-20,751	161,888	770	213	293,771	
Indiana	13,508	969	10,783	20	11	79,295	2.7	-2,575	57,083	256	96	79,647	
Iowa	6,120	342	3,741	6	1	48,028	3.2	2,225	17,239	138	42	48,208	
Kansas	5,591	-12,376	3,484	0	1	23,841	1.8	-57,451	12,032	11	5	23,857	
Kentucky	10,712	-307	7,776	6	1	40,867	2.2	-354	17,930	112	101	41,080	
Louisiana	9,010	-1,366	7,205	23	12	60,711	3.3	-4,938	45,660	104	24	60,839	
Maine	2,172	-541	1,470	7	1	18,206	3.1	45	9,397	65	13	18,284	
Maryland	19,770	-16,585	16,620	37	2	74,667	3.1	-6,070	45,325	278	90	75,035	
Massachusetts	20,500	8	14,622	29	20	167,637	4.9	-14,937	91,145	386	156	168,179	
Michigan	19,881	1,280	13,254	7	0	186,687	4.6	-20,949	106,854	285	61	187,033	
Minnesota	12,247	511	8,139	15	6	121,069	4.4	-509	56,964	254	98	121,421	
Mississippi	7,538	3,796	6,570	5	3	28,809	2.7	-2,375	20,548	137	27	28,973	
Missouri	12,213	308	8,543	3	4	57,592	2.2	1,094	29,686	167	29	57,788	
Montana	2,158	-108	1,223	45	3	17,525	3.9	-131	6,036	569	23	18,117	
Nebraska	2,473	-226	1,798	3	5	16,654	1.7	-255	10,961	30	14	16,698	
Nevada	9,953	132	7,159	5	5	79,798	6.0	-1,093	60,573	208	94	80,100	
New Hampshire	3,594	290	3,087	2	2	27,182	4.3	-726	23,132	50	7	27,239	
New Jersey	16,205	1,516	6,917	30	29	137,483	3.5	-5,290	27,552	426	227	138,136	
New Mexico	3,709	-818	2,836	3	2	39,129	5.0	-1,842	29,164	445	67	39,641	
New York	59,983	-17,407	44,973	27	25	462,385	5.1	4,473	298,992	386	444	463,215	
North Carolina	12,694	-658	9,368	39	53	71,727	1.7	775	49,683	358	287	72,372	
North Dakota	1,154	-150	628	2	4	9,690	2.4	136	2,852	22	7	9,719	
Ohio	140,488	92,667	133,663	13	36	164,536	3.1	3,496	93,094	276	245	165,057	
Oklahoma	7,201	-466	5,486	16	3	37,651	2.4	1,287	19,894	130	67	37,848	
Oregon	8,847	-429	3,894	61	17	81,207	4.3	-3,167	49,549	1,018	114	82,339	
Pennsylvania	31,730	1,306	17,305	164	60	318,600	6.4	-23,003	176,596	1,493	432	320,525	
Puerto Rico	1,409	351	-361	8	4	32,944	3.9	-3,997	9,787	415	17	33,376	
Rhode Island	17,724	1,345	16,765	0	5	27,681	6.1	2,198	16,630	63	27	27,771	
South Carolina	6,339	1,886	4,285	13	16	47,634	2.3	-2,316	30,965	42	88	47,764	
South Dakota	646	35	423	2	1	5,579	1.4	223	2,462	104	3	5,686	
Tennessee	10,761	-736	8,600	26	15	55,379	1.7	1,099	34,709	84	47	55,510	
Texas	47,022	-5,555	33,153	219	333	337,647	2.8	-3,728	208,981	1,375	1,576	340,598	
Utah	3,268	203	1,965	40	7	16,855	1.1	37	4,668	275	16	17,146	
Vermont	1,156	-120	681	0	0	13,150	4.5	-91	8,326	25	1	13,176	
Virgin Islands	168	-59	123	0	0	2,438	6.6	436	1,916	0	4	2,442	
Virginia	14,203	-3,974	11,106	17	5	65,091	1.8	-2,246	43,042	201	127	65,419	
Washington	16,254	-511	9,093	27	26	158,407	4.8	-3,632	94,263	687	577	159,671	
West Virginia	2,722	-198	1,516	1	3	21,907	3.4	-350	5,319	206	32	22,145	
Wisconsin	15,040	-599	8,461	22	7	104,706	3.8	-2,257	60,229	224	68	104,998	
Wyoming	897	-82	308	11	0	5,654	2.2	-61	2,147	117	7	5,778	
Totals	868,053	18,403	648,649	1,660	934	5,038,590	3.5	-155,222	2,951,228	19,429	8,329	5,066,348	

Figures appearing in columns showing over-the-week changes reflect all revisions in data for prior week submitted by state agencies.

1. The Unemployment Compensation program for Federal Employees (UCFE) and the Unemployment Compensation for Ex-servicemembers (UCX) exclude claims filed jointly under other programs to avoid duplication.
2. Rate is not seasonally adjusted. The source of U.S. total covered employment is BLS.

UNADJUSTED INITIAL CLAIMS FOR WEEK ENDED February 6, 2021

STATES WITH AN INCREASE OF MORE THAN 1,000

State	Change	State Supplied Comment
OH	+92,667	No comment.
CA	+28,688	Layoffs in the service industry.
GA	+5,171	No comment.
MS	+3,796	No comment.
CO	+3,045	No comment.
SC	+1,886	No comment.
ID	+1,598	No comment.
NJ	+1,516	No comment.
RI	+1,345	Layoffs in the health care and social assistance, educational services, retail trade, finance and insurance, and manufacturing industries.
PA	+1,306	No comment.
MI	+1,280	No comment.

STATES WITH A DECREASE OF MORE THAN 1,000

State	Change	State Supplied Comment
FL	-47,430	No comment.
NY	-17,407	Fewer layoffs in the health care and social assistance, accommodation and food services, and retail trade industries.
MD	-16,585	No comment.
KS	-12,376	No comment.
AZ	-7,478	No comment.
IL	-5,749	No comment.
TX	-5,555	No comment.
VA	-3,974	No comment.
CT	-2,801	No comment.
LA	-1,366	No comment.

TECHNICAL NOTES

This news release presents the weekly unemployment insurance (UI) claims reported by each state's unemployment insurance program offices. These claims may be used for monitoring workload volume, assessing state program operations and for assessing labor market conditions. States initially report claims directly taken by the state liable for the benefit payments, regardless of where the claimant who filed the claim resided. These are the basis for the advance initial claims and continued claims reported each week. These data come from ETA 538, Advance Weekly Initial and Continued Claims Report. The following week initial claims and continued claims are revised based on a second reporting by states that reflect the claimants by state of residence. These data come from the ETA 539, Weekly Claims and Extended Benefits Trigger Data Report.

A. Initial Claims

An initial claim is a claim filed by an unemployed individual after a separation from an employer. The claimant requests a determination of basic eligibility for the UI program. When an initial claim is filed with a state, certain programmatic activities take place and these result in activity counts including the count of initial claims. The count of U.S. initial claims for unemployment insurance is a leading economic indicator because it is an indication of emerging labor market conditions in the country. However, these are weekly administrative data which are difficult to seasonally adjust, making the series subject to some volatility.

B. Continued Weeks Claimed

A person who has already filed an initial claim and who has experienced a week of unemployment then files a continued claim to claim benefits for that week of unemployment. On a weekly basis, continued claims are also referred to as insured unemployment, as continued claims reflect a good approximation of the current number of insured unemployed workers filing for UI benefits. The count of U.S. continued weeks claimed is also a good indicator of labor market conditions. While continued claims are not a leading indicator (they roughly coincide with economic cycles at their peaks and lag at cycle troughs), they provide confirming evidence of the direction of the U.S. economy.

C. Seasonal Adjustments and Annual Revisions

Over the course of a year, the weekly changes in the levels of initial claims and continued claims undergo regularly occurring fluctuations. These fluctuations may result from seasonal changes in weather, major holidays, the opening and closing of schools, or other similar events. Because these seasonal events follow a more or less regular pattern each year, their influence on the level of a series can be tempered by adjusting for regular seasonal variation. These adjustments make trend and cycle developments easier to spot. At the beginning of each calendar year, the Bureau of Labor Statistics provides the Employment and Training Administration (ETA) with a set of seasonal factors to apply to the unadjusted data during that year. Concurrent with the implementation and release of the new seasonal factors, ETA incorporates revisions to the UI claims historical series caused by updates to the unadjusted data.

[Weekly Claims Archives](#)

[Weekly Claims Data](#)

U.S. Department of Labor news materials are accessible at <http://www.dol.gov>. The Department's [Reasonable Accommodation Resource Center](#) converts Departmental information and documents into alternative formats, which include Braille and large print. For alternative format requests, please contact the Department at (202) 693-7828 (voice) or (800) 877-8339 (federal relay).

U.S. Department of Labor
Employment and Training Administration
Washington, D.C. 20210
Release Number: USDL 21-298-NAT

Program Contacts:
Thomas Stengle: (202) 693-2991
Media Contact: (202) 693-4676