



# News Release

Connect with DOL at <http://blog.dol.gov>



TRANSMISSION OF MATERIALS IN THIS RELEASE IS EMBARGOED UNTIL  
8:30 A.M. (Eastern) Thursday, September 28, 2017

## UNEMPLOYMENT INSURANCE WEEKLY CLAIMS

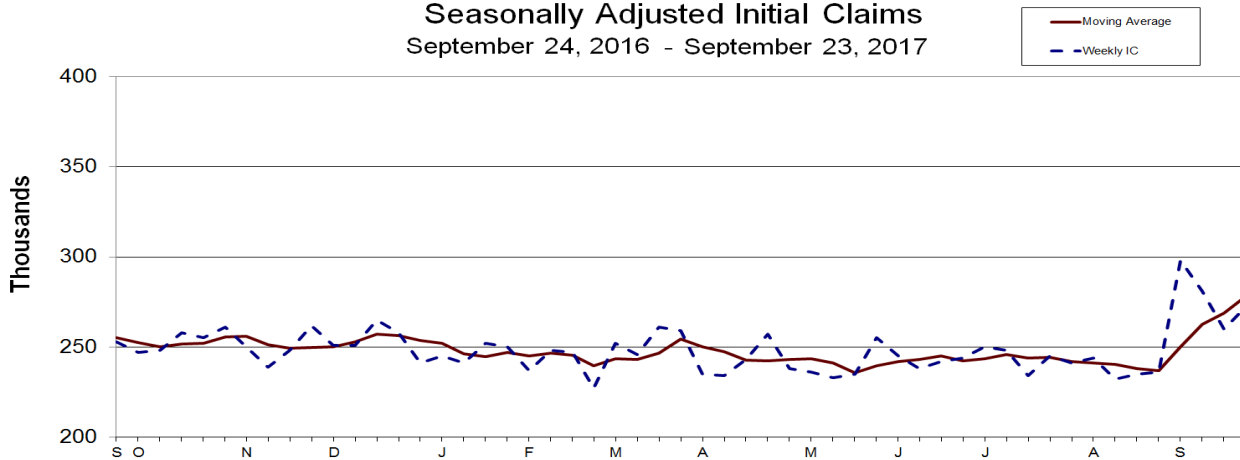
### SEASONALLY ADJUSTED DATA

In the week ending September 23, the advance figure for seasonally adjusted **initial claims** was 272,000, an increase of 12,000 from the previous week's revised level. The previous week's level was revised up by 1,000 from 259,000 to 260,000. The 4-week moving average was 277,750, an increase of 9,000 from the previous week's unrevised average of 268,750. This is the highest level for this average since February 6, 2016 when it was 277,750.

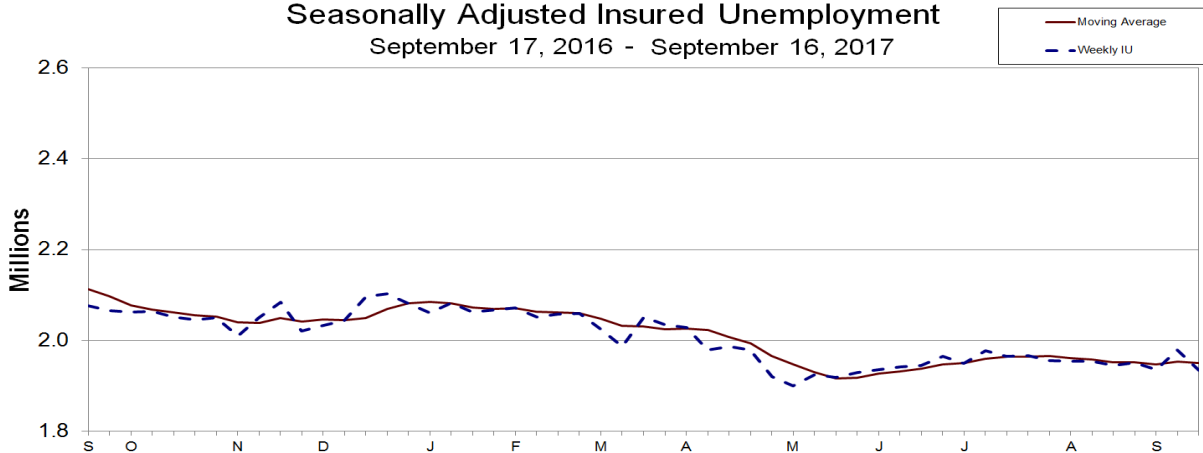
Hurricanes Harvey and Irma impacted this week's claims.

The advance seasonally adjusted **insured unemployment rate** was 1.4 percent for the week ending September 16, unchanged from the previous week's unrevised rate. The advance number for seasonally adjusted **insured unemployment** during the week ending September 16 was 1,934,000, a decrease of 45,000 from the previous week's revised level. The previous week's level was revised down by 1,000 from 1,980,000 to 1,979,000. The 4-week moving average was 1,949,750, a decrease of 2,750 from the previous week's revised average. The previous week's average was revised down by 500 from 1,953,000 to 1,952,500.

Seasonally Adjusted Initial Claims  
September 24, 2016 - September 23, 2017



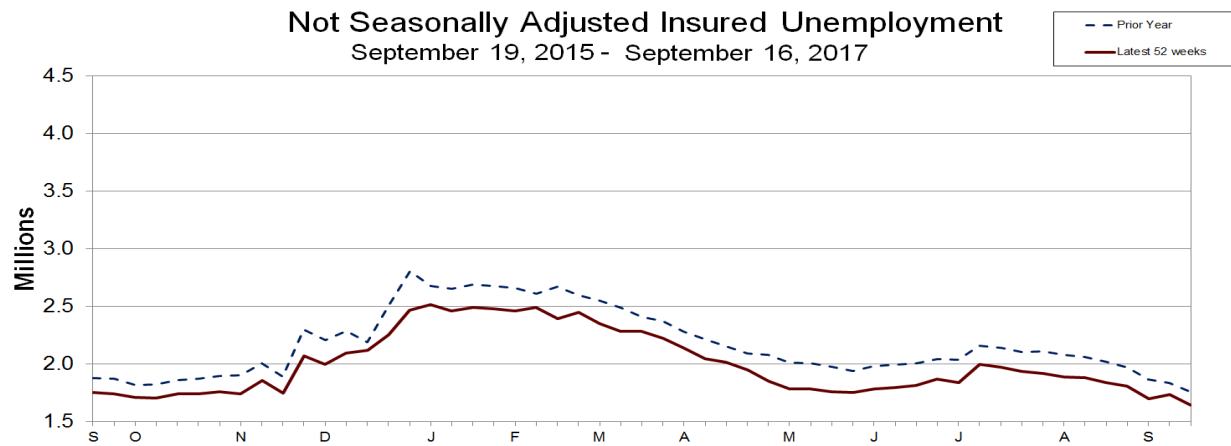
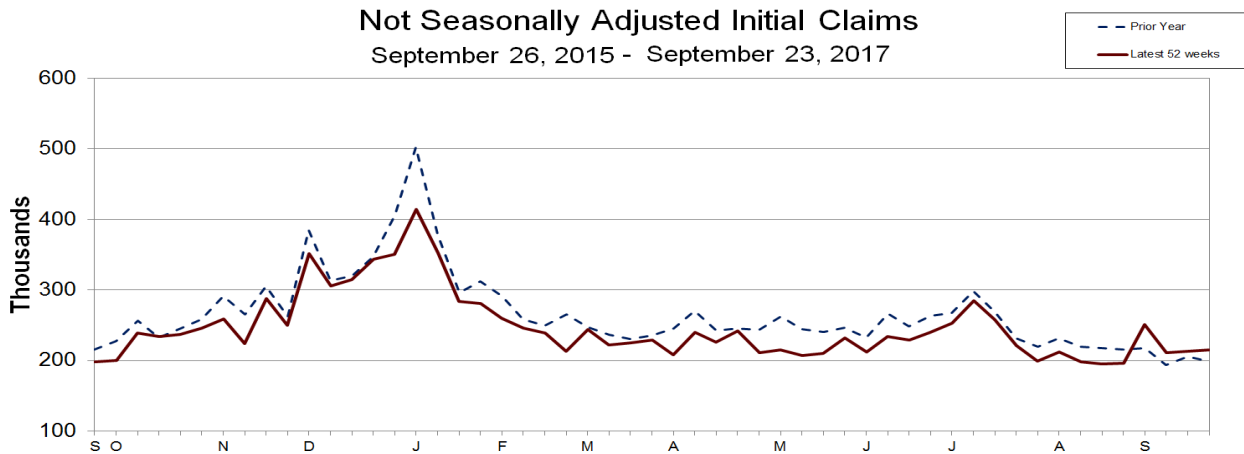
Seasonally Adjusted Insured Unemployment  
September 17, 2016 - September 16, 2017



## UNADJUSTED DATA

The advance number of actual initial claims under state programs, unadjusted, totaled 215,024 in the week ending September 23, an increase of 2,062 (or 1.0 percent) from the previous week. The seasonal factors had expected a decrease of 7,541 (or -3.5 percent) from the previous week. There were 198,455 initial claims in the comparable week in 2016.

The advance unadjusted insured unemployment rate was 1.2 percent during the week ending September 16, unchanged from the prior week. The advance unadjusted number for persons claiming UI benefits in state programs totaled 1,642,371, a decrease of 93,485 (or -5.4 percent) from the preceding week. The seasonal factors had expected a decrease of 55,421 (or -3.2 percent) from the previous week. A year earlier the rate was 1.3 percent and the volume was 1,756,097.



The total number of people claiming benefits in all programs for the week ending September 9 was 1,765,477, an increase of 37,410 from the previous week. There were 1,874,794 persons claiming benefits in all programs in the comparable week in 2016.

No state was triggered "on" the Extended Benefits program during the week ending September 9.

Initial claims for UI benefits filed by former Federal civilian employees totaled 649 in the week ending September 16, a decrease of 11 from the prior week. There were 708 initial claims filed by newly discharged veterans, an increase of 53 from the preceding week.

There were 8,022 former Federal civilian employees claiming UI benefits for the week ending September 9, a decrease of 47 from the previous week. Newly discharged veterans claiming benefits totaled 9,390, an increase of 310 from the prior week.

The highest insured unemployment rates in the week ending September 9 were in Puerto Rico (3.3), New Jersey (2.3), Alaska (2.1), California (1.9), Connecticut (1.9), Pennsylvania (1.8), Texas (1.7), Illinois (1.6), Nevada (1.6), the District of Columbia (1.5), Massachusetts (1.5), and New York (1.5).

The largest increases in initial claims for the week ending September 16 were in California (+9,497), Florida (+5,279), Ohio (+4,068), Puerto Rico (+2,133), and South Carolina (+1,533), while the largest decreases were in Texas (-23,637), Iowa (-665), Oklahoma (-368), Michigan (-308), and Nevada (-305).

---

UNEMPLOYMENT INSURANCE DATA FOR REGULAR STATE PROGRAMS

---

<b>WEEK ENDING</b>	<b>September 23</b>	<b>September 16</b>	<b>Change</b>	<b>September 9</b>	<b><u>Prior Year</u><sup>1</sup></b>
Initial Claims (SA)	272,000	260,000	+12,000	281,000	253,000
Initial Claims (NSA)	215,024	212,962	+2,062	211,366	198,455
4-Wk Moving Average (SA)	277,750	268,750	+9,000	262,500	255,000
<b>WEEK ENDING</b>	<b>September 16</b>	<b>September 9</b>	<b>Change</b>	<b>September 2</b>	<b><u>Prior Year</u><sup>1</sup></b>
Insured Unemployment (SA)	1,934,000	1,979,000	-45,000	1,935,000	2,076,000
Insured Unemployment (NSA)	1,642,371	1,735,856	-93,485	1,699,014	1,756,097
4-Wk Moving Average (SA)	1,949,750	1,952,500	-2,750	1,946,250	2,113,250
<a href="#"><u>Insured Unemployment Rate (SA)</u></a> <sup>2</sup>	1.4%	1.4%	0.0	1.4%	1.5%
<a href="#"><u>Insured Unemployment Rate (NSA)</u></a> <sup>2</sup>	1.2%	1.2%	0.0	1.2%	1.3%

---

INITIAL CLAIMS FILED IN FEDERAL PROGRAMS (UNADJUSTED)

---

<b>WEEK ENDING</b>	<b>September 16</b>	<b>September 9</b>	<b>Change</b>	<b><u>Prior Year</u><sup>1</sup></b>
Federal Employees (UCFE)	649	660	-11	752
Newly Discharged Veterans (UCX)	708	655	+53	1,066

---

PERSONS CLAIMING UI BENEFITS IN ALL PROGRAMS (UNADJUSTED)

---

<b>WEEK ENDING</b>	<b>September 9</b>	<b>September 2</b>	<b>Change</b>	<b><u>Prior Year</u><sup>1</sup></b>
Regular State	1,732,987	1,695,976	+37,011	1,831,036
Federal Employees	8,022	8,069	-47	8,174
Newly Discharged Veterans	9,390	9,080	+310	13,223
<a href="#"><u>Extended Benefits</u></a> <sup>3</sup>	0	0	0	0
<a href="#"><u>State Additional Benefits</u></a> <sup>4</sup>	5,876	5,742	+134	6,822
<a href="#"><u>STC / Workshare</u></a> <sup>5</sup>	9,202	9,200	+2	15,539
<b><u>TOTAL</u></b>	<b>1,765,477</b>	<b>1,728,067</b>	<b>+37,410</b>	<b>1,874,794</b>

**FOOTNOTES**

SA - Seasonally Adjusted Data, NSA - Not Seasonally Adjusted Data

1. Prior year is comparable to most recent data.
2. Most recent week used covered employment of 139,989,708 as denominator.
3. Information on the EB program can be found here: [EB Program information](#)
4. Some states maintain additional benefit programs for those claimants who exhaust regular, extended and emergency benefits. Information on states that participate, and the extent of benefits paid, can be found starting on page 4-5 of this link: [Extensions and Special Programs PDF](#)
5. Information on STC/Worksharing can be found starting on page 4-9 of the following link: [Extensions and Special Programs PDF](#)

## Advance State Claims - Not Seasonally Adjusted

STATE	Initial Claims Filed During Week Ended September 23			Insured Unemployment For Week Ended September 16		
	Advance	Prior Wk	Change	Advance	Prior Wk	Change
Alabama	2,105	2,206	-101	16,460	16,664	-204
Alaska	1,301	951	350	6,328	6,669	-341
Arizona	3,562	3,800	-238	25,810	29,534	-3,724
Arkansas	1,178	1,418	-240	11,067	12,516	-1,449
California	39,822	39,899	-77	318,090	313,472	4,618
Colorado	1,609	1,613	-4	19,517	19,955	-438
Connecticut	2,741	2,665	76	31,589	31,192	397
Delaware	423	474	-51	4,419	4,319	100
District of Columbia	562	310	252	7,666	8,436	-770
Florida <sup>I</sup>	18,212	10,052	8,160	42,783	43,730	-947
Georgia <sup>I</sup>	7,917	4,760	3,157	26,642	26,967	-325
Hawaii	1,112	1,148	-36	7,518	7,531	-13
Idaho	811	844	-33	3,713	4,030	-317
Illinois	7,561	7,806	-245	89,306	91,760	-2,454
Indiana	2,191	2,043	148	13,855	14,200	-345
Iowa	1,882	1,579	303	14,207	14,410	-203
Kansas	4,719	1,522	3,197	9,382	9,573	-191
Kentucky	1,745	1,830	-85	15,694	19,544	-3,850
Louisiana	2,015	2,232	-217	17,801	20,375	-2,574
Maine	427	474	-47	3,566	3,911	-345
Maryland	2,777	3,068	-291	27,133	30,944	-3,811
Massachusetts	4,621	4,258	363	52,999	52,138	861
Michigan	8,749	5,235	3,514	39,488	45,485	-5,997
Minnesota	2,480	2,764	-284	25,820	26,214	-394
Mississippi	868	1,200	-332	8,849	9,779	-930
Missouri	3,725	2,925	800	19,522	20,589	-1,067
Montana	849	838	11	4,122	4,420	-298
Nebraska	648	630	18	4,141	4,119	22
Nevada	2,313	2,168	145	17,750	20,204	-2,454
New Hampshire	388	449	-61	3,213	3,606	-393
New Jersey	7,618	7,766	-148	82,322	91,320	-8,998
New Mexico	763	853	-90	9,119	9,393	-274
New York	12,090	14,548	-2,458	121,941	137,429	-15,488
North Carolina	2,994	2,724	270	19,106	21,349	-2,243
North Dakota	331	221	110	2,339	1,941	398
Ohio	5,484	9,214	-3,730	48,183	45,536	2,647
Oklahoma	827	1,157	-330	13,848	14,533	-685
Oregon	3,313	4,006	-693	23,217	23,966	-749
Pennsylvania	10,691	11,039	-348	95,914	102,457	-6,543
Puerto Rico <sup>*I</sup>	2,248	2,416	-168	27,530	28,814	-1,284
Rhode Island	806	837	-31	6,529	6,386	143
South Carolina	2,430	2,779	-349	15,643	13,922	1,721
South Dakota	147	176	-29	968	893	75
Tennessee	2,009	2,156	-147	17,187	17,938	-751
Texas <sup>H</sup>	20,169	28,387	-8,218	159,355	193,355	-34,000
Utah	935	1,016	-81	6,813	6,822	-9
Vermont	287	294	-7	2,392	2,331	61
Virgin Islands <sup>I</sup>	210	82	128	473*	452*	21
Virginia	2,883	2,513	370	23,875	22,989	886
Washington	5,302	5,221	81	45,524	44,149	1,375
West Virginia	532	696	-164	8,569	8,470	99
Wisconsin	3,331	3,444	-113	21,065	22,843	-1,778
Wyoming	311	256	55	2,009	2,282	-273
US Total	215,024	212,962	2,062	1,642,371	1,735,856	-93,485

Note: Advance Claims are not directly comparable to claims reported in prior weeks. Advance claims are reported by the state liable for paying the unemployment compensation, whereas previous weeks reported reflect claimants by state of residence. In addition, claims reported as "workshare equivalent" in the previous week are added to the advance claims as a proxy for the current week's "workshare equivalent" activity.

\*Denotes OUI staff estimate.

<sup>H</sup>Affected by Hurricane Harvey.

<sup>I</sup>Affected by Hurricane Irma.

## Seasonally Adjusted US Weekly UI Claims (in thousands)

Week Ending	Change from			Insured Unemployment	Change from		IUR
	Initial Claims	Prior Week	4-Week Average		Prior Week	4-Week Average	
September 17, 2016	252	-6	256.75	2,076	-29	2,113.25	1.5
September 24, 2016	253	1	255.00	2,066	-10	2,096.50	1.5
October 1, 2016	247	-6	252.50	2,063	-3	2,077.50	1.5
October 8, 2016	248	1	250.00	2,064	1	2,067.25	1.5
October 15, 2016	258	10	251.50	2,052	-12	2,061.25	1.5
October 22, 2016	255	-3	252.00	2,045	-7	2,056.00	1.5
October 29, 2016	261	6	255.50	2,050	5	2,052.75	1.5
November 5, 2016	250	-11	256.00	2,010	-40	2,039.25	1.5
November 12, 2016	239	-11	251.25	2,050	40	2,038.75	1.5
November 19, 2016	248	9	249.50	2,084	34	2,048.50	1.5
November 26, 2016	262	14	249.75	2,020	-64	2,041.00	1.5
December 3, 2016	251	-11	250.00	2,033	13	2,046.75	1.5
December 10, 2016	251	0	253.00	2,044	11	2,045.25	1.5
December 17, 2016	265	14	257.25	2,097	53	2,048.50	1.5
December 24, 2016	258	-7	256.25	2,102	5	2,069.00	1.5
December 31, 2016	241	-17	253.75	2,081	-21	2,081.00	1.5
January 7, 2017	245	4	252.25	2,061	-20	2,085.25	1.5
January 14, 2017	241	-4	246.25	2,083	22	2,081.75	1.5
January 21, 2017	252	11	244.75	2,063	-20	2,072.00	1.5
January 28, 2017	250	-2	247.00	2,067	4	2,068.50	1.5
February 4, 2017	237	-13	245.00	2,071	4	2,071.00	1.5
February 11, 2017	248	11	246.75	2,052	-19	2,063.25	1.5
February 18, 2017	247	-1	245.50	2,057	5	2,061.75	1.5
February 25, 2017	227	-20	239.75	2,059	2	2,059.75	1.5
March 4, 2017	252	25	243.50	2,025	-34	2,048.25	1.5
March 11, 2017	246	-6	243.00	1,987	-38	2,032.00	1.4
March 18, 2017	261	15	246.50	2,052	65	2,030.75	1.5
March 25, 2017	259	-2	254.50	2,035	-17	2,024.75	1.5
April 1, 2017	235	-24	250.25	2,028	-7	2,025.50	1.5
April 8, 2017	234	-1	247.25	1,978	-50	2,023.25	1.4
April 15, 2017	243	9	242.75	1,987	9	2,007.00	1.4
April 22, 2017	257	14	242.25	1,979	-8	1,993.00	1.4
April 29, 2017	238	-19	243.00	1,920	-59	1,966.00	1.4
May 6, 2017	236	-2	243.50	1,899	-21	1,946.25	1.4
May 13, 2017	233	-3	241.00	1,924	25	1,930.50	1.4
May 20, 2017	235	2	235.50	1,919	-5	1,915.50	1.4
May 27, 2017	255	20	239.75	1,929	10	1,917.75	1.4
June 3, 2017	245	-10	242.00	1,936	7	1,927.00	1.4
June 10, 2017	238	-7	243.25	1,942	6	1,931.50	1.4
June 17, 2017	242	4	245.00	1,945	3	1,938.00	1.4
June 24, 2017	244	2	242.25	1,965	20	1,947.00	1.4
July 1, 2017	250	6	243.50	1,949	-16	1,950.25	1.4
July 8, 2017	248	-2	246.00	1,977	28	1,959.00	1.4
July 15, 2017	234	-14	244.00	1,965	-12	1,964.00	1.4
July 22, 2017	245	11	244.25	1,967	2	1,964.50	1.4
July 29, 2017	241	-4	242.00	1,956	-11	1,966.25	1.4
August 5, 2017	244	3	241.00	1,954	-2	1,960.50	1.4
August 12, 2017	232	-12	240.50	1,954	0	1,957.75	1.4
August 19, 2017	235	3	238.00	1,945	-9	1,952.25	1.4
August 26, 2017	236	1	236.75	1,951	6	1,951.00	1.4
September 2, 2017	298	62	250.25	1,935	-16	1,946.25	1.4
September 9, 2017	281	-17	262.50	1,979	44	1,952.50	1.4
September 16, 2017	260	-21	268.75	1,934	-45	1,949.75	1.4
September 23, 2017	272	12	277.75				

Initial Claims Filed During Week Ended September 16 INITIAL CLAIMS							Insured Unemployment For Week Ended September 9 INSURED UNEMPLOYMENT					
STATE	STATE	CHANGE FROM				STATE	CHANGE FROM	STATE	STATE	ALL PROGRAMS EXCLUDING RAILROAD RETIREMENT		
		LAST WEEK	YEAR AGO	UCFE <sub>1</sub>	UCX <sub>1</sub>					LAST WEEK	YEAR AGO	
						(%) <sub>2</sub>						
Alabama	2206	121	-197	7	6	16664	0.9	85	-3698	52	92	16808
Alaska	951	94	-279	4	2	6669	2.1	359	-1575	57	22	6748
Arizona	3800	389	-256	4	3	29534	1.1	-842	-2922	95	89	29718
Arkansas	1418	-2	-414	4	3	12516	1.1	79	-1811	47	80	12643
California	39899	9497	1134	135	152	313472	1.9	16211	-8813	1601	2055	317128
Colorado	1613	83	-303	6	15	19955	0.8	667	-4098	108	302	20365
Connecticut	2665	85	-56	11	9	31192	1.9	-2527	-2978	67	74	31333
Delaware	474	35	-22	0	2	4319	1.0	-400	-526	17	13	4349
District of Columbia	310	31	32	7	0	8436	1.5	-65	310	440	17	8893
Florida	10052	5279	2449	19	34	43730	0.5	-2421	-9017	156	188	44074
Georgia	4760	-139	-1592	8	26	26967	0.6	-378	-4010	141	249	27357
Hawaii	1148	40	-99	2	12	7531	1.2	374	203	67	117	7715
Idaho	844	77	-105	0	2	4030	0.6	-210	-1397	20	6	4056
Illinois	7806	149	-472	10	15	91760	1.6	587	-15604	382	212	92354
Indiana	2043	27	-583	5	5	14200	0.5	-1873	-5417	37	43	14280
Iowa	1579	-665	-281	3	3	14410	0.9	491	-791	40	46	14496
Kansas	1522	149	-394	7	3	9573	0.7	-90	-2034	68	42	9683
Kentucky	1830	47	-146	6	3	19544	1.1	2874	-553	129	130	19803
Louisiana	2232	-143	-170	4	5	20375	1.1	-346	-6815	51	30	20456
Maine	474	5	-127	1	0	3911	0.7	42	-348	9	21	3941
Maryland	3068	170	-26	31	12	30944	1.2	-3029	-2232	311	171	31426
Massachusetts	4258	207	-234	8	16	52138	1.5	-7828	-5041	138	190	52466
Michigan	5235	-308	-949	7	16	45485	1.1	250	1861	93	128	45706
Minnesota	2764	141	-577	3	7	26214	0.9	-724	-2009	46	93	26353
Mississippi	1200	-1	-274	0	1	9779	0.9	-442	-1877	20	40	9839
Missouri	2925	412	-495	31	4	20589	0.8	-392	-4024	285	43	20917
Montana	838	160	99	10	1	4420	1.0	182	-225	40	28	4488
Nebraska	630	-74	-31	2	3	4119	0.4	79	409	11	9	4139
Nevada	2168	-305	-76	4	8	20204	1.6	55	-1032	50	73	20327
New Hampshire	449	35	-7	1	0	3606	0.6	-202	-227	4	3	3613
New Jersey	7766	311	-1087	13	19	91320	2.3	-8679	1108	204	324	91848
New Mexico	853	106	-89	4	4	9393	1.2	116	-1853	65	69	9527
New York	14548	713	14	29	35	137429	1.5	-15779	-2092	331	477	138237
North Carolina	2724	342	-468	12	15	21349	0.5	211	-3217	81	163	21593
North Dakota	221	-67	-151	2	0	1941	0.5	-191	-922	18	5	1964
Ohio	9214	4068	2737	13	21	45536	0.9	-498	-4729	94	226	45856
Oklahoma	1157	-368	-414	8	6	14533	1.0	-312	-6671	71	94	14698
Oregon	4006	741	623	15	13	23966	1.3	-268	-202	85	128	24179
Pennsylvania	11039	-44	-2071	62	42	102457	1.8	-4294	-11650	432	357	103246
Puerto Rico	2416	2133	883	2	7	28814	3.3	5028	6352	104	77	28995
Rhode Island	837	109	31	5	2	6386	1.4	-1062	-685	30	21	6437
South Carolina	2779	1533	426	7	13	13922	0.7	6	-1643	118	12	14052
South Dakota	176	37	-16	3	1	893	0.2	-26	-253	23	5	921
Tennessee	2156	-47	-127	9	2	17938	0.6	17	126	396	59	18393
Texas	28387	-23637	13570	68	104	193355	1.7	64859	24007	719	1556	195630
Utah	1016	242	38	28	3	6822	0.5	-204	-1072	165	26	7013
Vermont	294	-12	-56	1	1	2331	0.8	-115	-333	7	2	2340
Virgin Islands	82	42	0	10	4	452	1.2	18	-340	0	0	452
Virginia	2513	-22	-528	7	22	22989	0.6	40	-1883	228	403	23620
Washington	5221	6	-24	5	18	44149	1.4	-311	4187	172	703	45024
West Virginia	696	-13	-238	2	1	8470	1.3	-76	-4347	34	35	8539
Wisconsin	3444	-176	-1162	3	6	22843	0.8	-2258	-5440	45	28	22916
Wyoming	256	3	-127	1	1	2282	0.9	54	-2220	18	14	2314
Totals	212962	1596	7313	649	708	1735856	1.2	36842	-100063	8022	9390	1753268

Figures Appearing In columns showing Over-The-Week Changes reflect all revisions in data for prior week submitted by State agencies.

1. The Unemployment Compensation program for Federal Employees (UCFE) and the Unemployment Compensation for Ex-servicemembers (UCX) exclude claims filed jointly under other programs to avoid duplication.
2. Rate is not seasonally adjusted. The source of US total covered employment is BLS.

---

**UNADJUSTED INITIAL CLAIMS FOR WEEK ENDED SEPTEMBER 16, 2017**

---

**STATES WITH AN INCREASE OF MORE THAN 1,000**

---

<b>State</b>	<b>Change</b>	<b>State Supplied Comment</b>
CA	+9,497	Layoffs in the service industry.
FL	+5,279	No comment.
OH	+4,068	Layoffs in the manufacturing and transportation and warehousing industries.
PR	+2,133	No comment.
SC	+1,533	No comment.

**STATES WITH A DECREASE OF MORE THAN 1,000**

---

<b>State</b>	<b>Change</b>	<b>State Supplied Comment</b>
TX	-23,637	No comment.

---



## TECHNICAL NOTES

This news release presents the weekly unemployment insurance (UI) claims reported by each state's unemployment insurance program offices. These claims may be used for monitoring workload volume, assessing state program operations and for assessing labor market conditions. States initially report claims directly taken by the state liable for the benefit payments, regardless of where the claimant who filed the claim resided. These are the basis for the advance initial claims and continued claims reported each week. These data come from ETA 538, Advance Weekly Initial and Continued Claims Report. The following week initial claims and continued claims are revised based on a second reporting by states that reflect the claimants by state of residence. These data come from the ETA 539, Weekly Claims and Extended Benefits Trigger Data Report.

### A. Initial Claims

An initial claim is a claim filed by an unemployed individual after a separation from an employer. The claimant requests a determination of basic eligibility for the UI program. When an initial claim is filed with a state, certain programmatic activities take place and these result in activity counts including the count of initial claims. The count of U.S. initial claims for unemployment insurance is a leading economic indicator because it is an indication of emerging labor market conditions in the country. However, these are weekly administrative data which are difficult to seasonally adjust, making the series subject to some volatility.

### B. Continued Weeks Claimed

A person who has already filed an initial claim and who has experienced a week of unemployment then files a continued claim to claim benefits for that week of unemployment. Continued claims are also referred to as insured unemployment. The count of U.S. continued weeks claimed is also a good indicator of labor market conditions. Continued claims reflect the current number of insured unemployed workers filing for UI benefits in the nation. While continued claims are not a leading indicator (they roughly coincide with economic cycles at their peaks and lag at cycle troughs), they provide confirming evidence of the direction of the U.S. economy.

### C. Seasonal Adjustments and Annual Revisions

Over the course of a year, the weekly changes in the levels of initial claims and continued claims undergo regularly occurring fluctuations. These fluctuations may result from seasonal changes in weather, major holidays, the opening and closing of schools, or other similar events. Because these seasonal events follow a more or less regular pattern each year, their influence on the level of a series can be tempered by adjusting for regular seasonal variation. These adjustments make trend and cycle developments easier to spot. At the beginning of each calendar year, the Bureau of Labor Statistics provides the Employment and Training Administration (ETA) with a set of seasonal factors to apply to the unadjusted data during that year. Concurrent with the implementation and release of the new seasonal factors, ETA incorporates revisions to the UI claims historical series caused by updates to the unadjusted data.

[Weekly Claims Archives](#)

[Weekly Claims Data](#)

U.S. Department of Labor news materials are accessible at <http://www.dol.gov>. The Department's [Reasonable Accommodation Resource Center](#) converts Departmental information and documents into alternative formats, which include Braille and large print. For alternative format requests, please contact the Department at (202) 693-7828 (voice) or (800) 877-8339 (federal relay).

U.S. Department of Labor  
Employment and Training Administration  
Washington, D.C. 20210  
Release Number: USDL 17-1342-NAT

Program Contacts:  
Brenda Loya (202) 693-3760  
Tony Sznoluch (202) 693-3176  
Media Contact: (202) 693-4676