



News Release

Connect with DOL at
<http://blog.dol.gov>



TRANSMISSION OF MATERIALS IN THIS RELEASE IS EMBARGOED UNTIL
8:30 A.M. (Eastern) Thursday, June 2, 2016

UNEMPLOYMENT INSURANCE WEEKLY CLAIMS

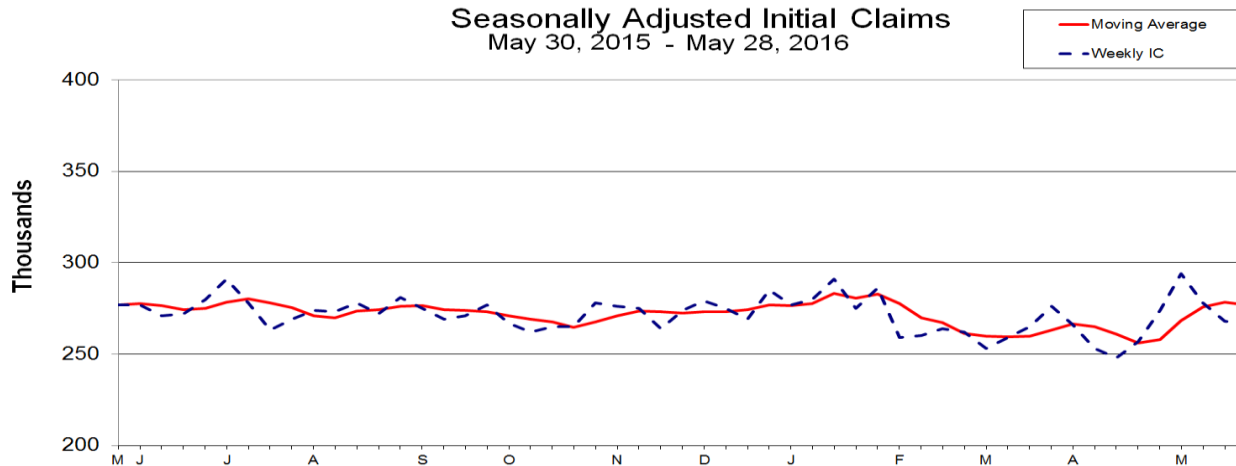
SEASONALLY ADJUSTED DATA

In the week ending May 28, the advance figure for seasonally adjusted **initial claims** was 267,000, a decrease of 1,000 from the previous week's unrevised level of 268,000. The 4-week moving average was 276,750, a decrease of 1,750 from the previous week's unrevised average of 278,500.

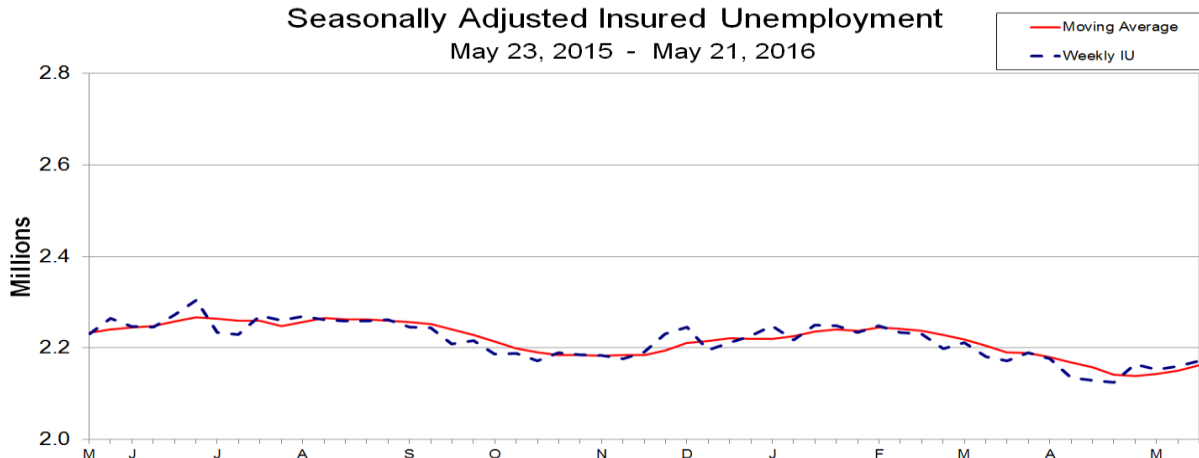
There were no special factors impacting this week's initial claims. This marks 65 consecutive weeks of initial claims below 300,000, the longest streak since 1973.

The advance seasonally adjusted **insured unemployment rate** was 1.6 percent for the week ending May 21, unchanged from the previous week's unrevised rate. The advance number for seasonally adjusted **insured unemployment** during the week ending May 21 was 2,172,000, an increase of 12,000 from the previous week's revised level. The previous week's level was revised down by 3,000 from 2,163,000 to 2,160,000. The 4-week moving average was 2,162,500, an increase of 12,000 from the previous week's revised average. The previous week's average was revised down by 750 from 2,151,250 to 2,150,500.

Seasonally Adjusted Initial Claims
May 30, 2015 - May 28, 2016



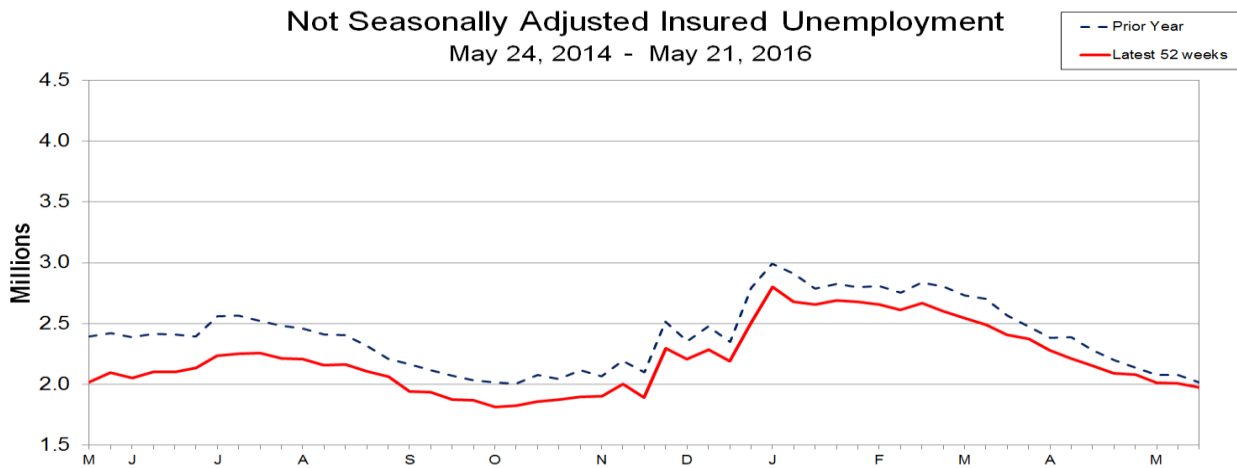
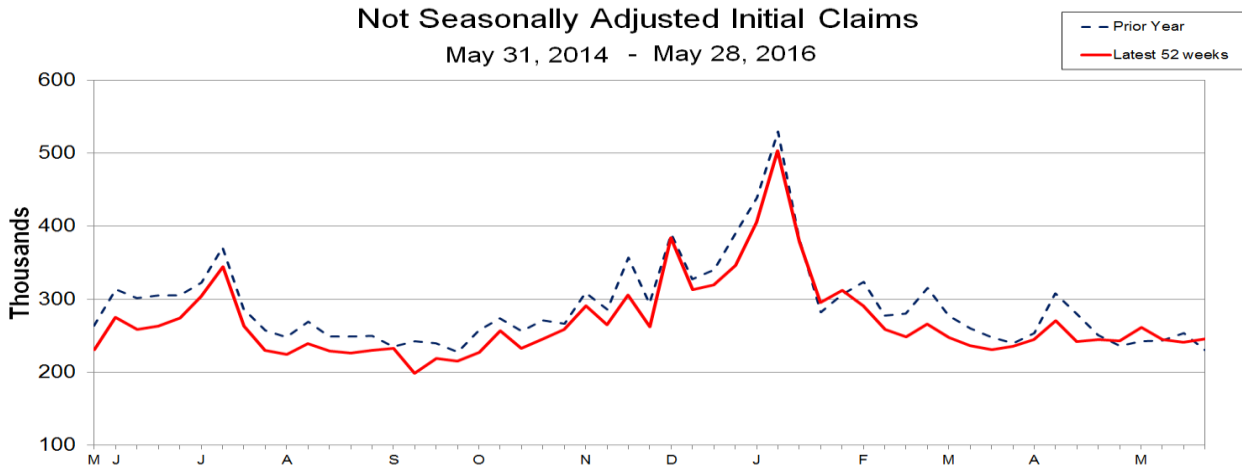
Seasonally Adjusted Insured Unemployment
May 23, 2015 - May 21, 2016



UNADJUSTED DATA

The advance number of actual initial claims under state programs, unadjusted, totaled 245,830 in the week ending May 28, an increase of 5,032 (or 2.1 percent) from the previous week. The seasonal factors had expected an increase of 5,893 (or 2.4 percent) from the previous week. There were 230,676 initial claims in the comparable week in 2015.

The advance unadjusted insured unemployment rate was 1.4 percent during the week ending May 21, a decrease of 0.1 percentage point from the prior week. The advance unadjusted number for persons claiming UI benefits in state programs totaled 1,976,932, a decrease of 32,311 (or -1.6 percent) from the preceding week. The seasonal factors had expected a decrease of 43,210 (or -2.2 percent) from the previous week. A year earlier the rate was 1.5 percent and the volume was 2,018,773.



The total number of people claiming benefits in all programs for the week ending May 14 was 2,049,518, a decrease of 6,372 from the previous week. There were 2,127,150 persons claiming benefits in all programs in the comparable week in 2015.

No state was triggered "on" the Extended Benefits program during the week ending May 14.

Initial claims for UI benefits filed by former Federal civilian employees totaled 718 in the week ending May 21, an increase of 71 from the prior week. There were 1,032 initial claims filed by newly discharged veterans, a decrease of 15 from the preceding week.

There were 7,712 former Federal civilian employees claiming UI benefits for the week ending May 14, a decrease of 42 from the previous week. Newly discharged veterans claiming benefits totaled 13,526, a decrease of 30 from the prior week.

The highest insured unemployment rates in the week ending May 14 were in Alaska (3.6), Wyoming (2.8), West Virginia (2.6), New Jersey (2.4), Puerto Rico (2.4), California (2.3), Pennsylvania (2.3), Connecticut (2.1), Illinois (1.9), Massachusetts (1.9), and Nevada (1.9).

The largest increases in initial claims for the week ending May 21 were in Tennessee (+2,426), Oregon (+1,882), Illinois (+859), Maryland (+565), and Mississippi (+552), while the largest decreases were in Michigan (-3,075), California (-2,952), Missouri (-2,352), Pennsylvania (-2,016), and New York (-1,570).

UNEMPLOYMENT INSURANCE DATA FOR REGULAR STATE PROGRAMS

WEEK ENDING	May 28	May 21	Change	May 14	Prior Year¹
Initial Claims (SA)	267,000	268,000	-1,000	278,000	277,000
Initial Claims (NSA)	245,830	240,798	+5,032	244,869	230,676
4-Wk Moving Average (SA)	276,750	278,500	-1,750	275,750	276,750
WEEK ENDING	May 21	May 14	Change	May 7	Prior Year¹
Insured Unemployment (SA)	2,172,000	2,160,000	+12,000	2,153,000	2,231,000
Insured Unemployment (NSA)	1,976,932	2,009,243	-32,311	2,014,816	2,018,773
4-Wk Moving Average (SA)	2,162,500	2,150,500	+12,000	2,142,750	2,233,500
Insured Unemployment Rate (SA)²	1.6%	1.6%	0.0	1.6%	1.7%
Insured Unemployment Rate (NSA)²	1.4%	1.5%	-0.1	1.5%	1.5%

INITIAL CLAIMS FILED IN FEDERAL PROGRAMS (UNADJUSTED)

WEEK ENDING	May 21	May 14	Change	Prior Year¹
Federal Employees (UCFE)	718	647	+71	884
Newly Discharged Veterans (UCX)	1,032	1,047	-15	1,278

PERSONS CLAIMING UI BENEFITS IN ALL PROGRAMS (UNADJUSTED)

WEEK ENDING	May 14	May 7	Change	Prior Year¹
Regular State	2,004,299	2,009,530	-5,231	2,074,596
Federal Employees	7,712	7,754	-42	10,179
Newly Discharged Veterans	13,526	13,556	-30	19,411
Extended Benefits³	0	0	0	0
State Additional Benefits⁴	7,925	7,714	+211	7,852
STC / Workshare⁵	16,056	17,336	-1,280	15,112
TOTAL	2,049,518	2,055,890	-6,372	2,127,150

FOOTNOTES

SA - Seasonally Adjusted Data, NSA - Not Seasonally Adjusted Data

1. Prior year is comparable to most recent data.
2. Most recent week used covered employment of 136,969,042 as denominator.
3. Information on the EB program can be found here: [EB Program information](#)
4. Some states maintain additional benefit programs for those claimants who exhaust regular, extended and emergency benefits. Information on states that participate, and the extent of benefits paid, can be found starting on page 4-5 of this link: [Extensions and Special Programs PDF](#)
5. Information on STC/Worksharing can be found starting on page 4-9 of the following link: [Extensions and Special Programs PDF](#)

Advance State Claims - Not Seasonally Adjusted

STATE	Initial Claims Filed During Week Ended May 28			Insured Unemployment For Week Ended May 21		
	Advance	Prior Wk	Change	Advance	Prior Wk	Change
Alabama	3,228	3,193	35	19,692	20,357	-665
Alaska	1,280	1,135	145	11,126	11,393	-267
Arizona	4,823	4,400	423	29,356	33,215	-3,859
Arkansas	2,406	2,927	-521	16,432	16,540	-108
California	44,505	40,546	3,959	357,296	359,256	-1,960
Colorado	2,567	2,578	-11	28,855	29,373	-518
Connecticut	2,991	3,209	-218	36,790	35,223	1,567
Delaware	573	594	-21	5,806	5,596	210
District of Columbia	572	348	224	7,058	7,093	-35
Florida	8,117	8,071	46	40,540	46,839	-6,299
Georgia	7,641	6,069	1,572	31,338	30,948	390
**Hawaii	1,238	1,241	-3	6,964	7,008	-44
Idaho	932	978	-46	5,705	6,571	-866
Illinois	11,806	10,482	1,324	111,675	111,134	541
Indiana	3,812	3,072	740	21,886	22,010	-124
Iowa	2,892	3,092	-200	19,290	17,903	1,387
Kansas	3,256	2,704	552	13,574	12,786	788
Kentucky	2,999	2,788	211	21,442	21,576	-134
Louisiana	2,945	3,165	-220	24,079	23,394	685
Maine	564	658	-94	6,100	6,658	-558
Maryland	3,374	4,080	-706	32,083	34,753	-2,670
Massachusetts	4,969	5,504	-535	63,951	64,694	-743
Michigan	5,291	5,704	-413	48,421	61,991	-13,570
Minnesota	3,548	3,821	-273	36,180	35,317	863
Mississippi	2,526	2,692	-166	11,927	12,407	-480
Missouri	6,005	5,975	30	21,953	25,719	-3,766
Montana	942	883	59	6,293	7,463	-1,170
Nebraska	1,261	892	369	4,300	4,282	18
Nevada	2,505	2,539	-34	20,770	23,048	-2,278
New Hampshire	497	537	-40	4,055	4,382	-327
New Jersey	8,561	8,233	328	90,417	91,440	-1,023
New Mexico	1,455	1,352	103	13,028	13,195	-167
New York	16,057	15,555	502	146,505	145,549	956
North Carolina	3,661	4,150	-489	25,108	25,933	-825
North Dakota	784	481	303	7,371	4,753	2,618
Ohio	7,729	7,073	656	56,918	57,939	-1,021
Oklahoma	2,227	2,175	52	23,355	23,686	-331
Oregon	3,512	5,223	-1,711	27,533	27,076	457
Pennsylvania	15,294	15,866	-572	127,376	129,315	-1,939
*Puerto Rico	1,667	1,834	-167	21,547	20,979	568
Rhode Island	871	876	-5	8,152	8,170	-18
South Carolina	2,825	2,906	-81	14,307	14,534	-227
South Dakota	268	261	7	1,209	1,281	-72
*Tennessee	3,833	3,981	-148	16,736	18,162	-1,426
Texas	17,381	17,421	-40	183,611	182,079	1,532
Utah	1,301	1,219	82	9,597	9,651	-54
Vermont	475	777	-302	4,456	4,354	102
Virgin Islands	36	38	-2	548	590	-42
*Virginia	4,238	4,055	183	30,104	28,540	1,564
Washington	6,241	5,964	277	47,323	46,587	736
West Virginia	1,357	1,387	-30	18,040	17,275	765
Wisconsin	5,288	5,520	-232	31,144	31,431	-287
*Wyoming	704	574	130	7,610	7,795	-185
US Total	245,830	240,798	5,032	1,976,932	2,009,243	-32,311

Note: Advance Claims are not directly comparable to claims reported in prior weeks. Advance claims are reported by the state liable for paying the unemployment compensation, whereas previous weeks reported reflect claimants by state of residence. In addition, claims reported as "workshare equivalent" in the previous week are added to the advance claims as a proxy for the current week's "workshare equivalent" activity.

*Denotes state staff estimate.

**Denotes OUI staff estimate.

Seasonally Adjusted US Weekly UI Claims (in thousands)

Week Ending	Initial Claims	Change from Prior Week	4-Week Average	Insured Unemployment	Change from Prior Week	4-Week Average	IUR
May 23, 2015	281	5	274.25	2,231	-2	2,233.50	1.7
May 30, 2015	277	-4	276.75	2,265	34	2,240.50	1.7
June 6, 2015	277	0	277.75	2,247	-18	2,244.00	1.7
June 13, 2015	271	-6	276.50	2,246	-1	2,247.25	1.7
June 20, 2015	272	1	274.25	2,272	26	2,257.50	1.7
June 27, 2015	280	8	275.00	2,304	32	2,267.25	1.7
July 4, 2015	291	11	278.50	2,233	-71	2,263.75	1.7
July 11, 2015	278	-13	280.25	2,229	-4	2,259.50	1.7
July 18, 2015	263	-15	278.00	2,270	41	2,259.00	1.7
July 25, 2015	269	6	275.25	2,260	-10	2,248.00	1.7
August 1, 2015	274	5	271.00	2,269	9	2,257.00	1.7
August 8, 2015	273	-1	269.75	2,261	-8	2,265.00	1.7
August 15, 2015	278	5	273.50	2,259	-2	2,262.25	1.7
August 22, 2015	272	-6	274.25	2,259	0	2,262.00	1.7
August 29, 2015	281	9	276.00	2,261	2	2,260.00	1.7
September 5, 2015	275	-6	276.50	2,246	-15	2,256.25	1.7
September 12, 2015	269	-6	274.25	2,244	-2	2,252.50	1.7
September 19, 2015	271	2	274.00	2,208	-36	2,239.75	1.6
September 26, 2015	277	6	273.00	2,216	8	2,228.50	1.6
October 3, 2015	267	-10	271.00	2,186	-30	2,213.50	1.6
October 10, 2015	262	-5	269.25	2,188	2	2,199.50	1.6
October 17, 2015	265	3	267.75	2,171	-17	2,190.25	1.6
October 24, 2015	265	0	264.75	2,190	19	2,183.75	1.6
October 31, 2015	278	13	267.50	2,185	-5	2,183.50	1.6
November 7, 2015	276	-2	271.00	2,183	-2	2,182.25	1.6
November 14, 2015	275	-1	273.50	2,176	-7	2,183.50	1.6
November 21, 2015	264	-11	273.25	2,191	15	2,183.75	1.6
November 28, 2015	274	10	272.25	2,230	39	2,195.00	1.6
December 5, 2015	279	5	273.00	2,245	15	2,210.50	1.7
December 12, 2015	275	-4	273.00	2,195	-50	2,215.25	1.6
December 19, 2015	269	-6	274.25	2,212	17	2,220.50	1.6
December 26, 2015	285	16	277.00	2,226	14	2,219.50	1.6
January 2, 2016	277	-8	276.50	2,248	22	2,220.25	1.6
January 9, 2016	280	3	277.75	2,217	-31	2,225.75	1.6
January 16, 2016	291	11	283.25	2,250	33	2,235.25	1.7
January 23, 2016	275	-16	280.75	2,248	-2	2,240.75	1.6
January 30, 2016	286	11	283.00	2,234	-14	2,237.25	1.6
February 6, 2016	259	-27	277.75	2,249	15	2,245.25	1.7
February 13, 2016	260	1	270.00	2,233	-16	2,241.00	1.6
February 20, 2016	264	4	267.25	2,231	-2	2,236.75	1.6
February 27, 2016	262	-2	261.25	2,198	-33	2,227.75	1.6
March 5, 2016	253	-9	259.75	2,212	14	2,218.50	1.6
March 12, 2016	259	6	259.50	2,180	-32	2,205.25	1.6
March 19, 2016	265	6	259.75	2,172	-8	2,190.50	1.6
March 26, 2016	276	11	263.25	2,189	17	2,188.25	1.6
April 2, 2016	266	-10	266.50	2,176	-13	2,179.25	1.6
April 9, 2016	253	-13	265.00	2,135	-41	2,168.00	1.6
April 16, 2016	248	-5	260.75	2,129	-6	2,157.25	1.6
April 23, 2016	257	9	256.00	2,124	-5	2,141.00	1.6
April 30, 2016	274	17	258.00	2,165	41	2,138.25	1.6
May 7, 2016	294	20	268.25	2,153	-12	2,142.75	1.6
May 14, 2016	278	-16	275.75	2,160	7	2,150.50	1.6
May 21, 2016	268	-10	278.50	2,172	12	2,162.50	1.6
May 28, 2016	267	-1	276.75				

Initial Claims Filed During Week Ended May
21

Insured Unemployment For Week Ended May 14
INSURED UNEMPLOYMENT

STATE	INITIAL CLAIMS CHANGE FROM							CHANGE FROM				ALL PROGRAMS EXCLUDING RAILROAD RETIREMENT
	STATE	LAST WEEK	YEAR AGO	UCFE 1	UCX 1	STATE	(%) 2	LAST WEEK	YEAR AGO	UCFE 1	UCX 1	
Alabama	3193	31	-525	9	16	20357	1.1	678	-2631	60	136	20553
Alaska	1135	40	-249	3	6	11393	3.6	208	1445	82	38	11513
Arizona	4400	-1	-9	19	16	33215	1.3	521	-849	122	148	33485
Arkansas	2927	445	-321	7	4	16540	1.4	321	-4490	71	111	16722
California	40546	-2952	-2132	145	157	359256	2.3	-5377	-16662	1863	2673	363792
Colorado	2578	303	-404	10	30	29373	1.2	468	-2997	150	541	30064
Connecticut	3209	-111	0	4	6	35223	2.1	-299	-1462	52	138	35413
Delaware	594	-85	-21	1	3	5596	1.3	-85	-145	16	26	5638
District of Columbia	348	-40	-32	2	3	7093	1.3	-280	-615	247	9	7349
Florida	8071	22	-1641	15	59	46839	0.6	1699	-13128	146	300	47285
Georgia	6069	-702	-560	33	59	30948	0.8	-750	-5471	207	429	31584
Hawaii	1241	-8	6	2	21	7008	1.2	324	-851	57	114	7179
Idaho	978	18	-155	1	7	6571	1.0	-232	-1225	43	39	6653
Illinois	10482	859	630	14	16	111134	1.9	-2102	1128	341	370	111845
Indiana	3072	-270	-218	8	8	22010	0.8	-206	-824	65	94	22169
Iowa	3092	530	770	7	5	17903	1.2	445	1055	43	74	18020
Kansas	2704	375	-1985	21	5	12786	1.0	-1828	-2079	39	93	12918
Kentucky	2788	-77	-1196	11	10	21576	1.2	-378	219	93	271	21940
Louisiana	3165	196	-1	4	5	23394	1.2	607	-122	43	36	23473
Maine	658	-66	-195	1	2	6658	1.1	-629	-1396	29	26	6713
Maryland	4080	565	307	16	10	34753	1.4	-636	-3341	237	216	35206
Massachusetts	5504	68	-117	7	14	64694	1.9	-1841	-318	130	297	65121
Michigan	5704	-3075	68	10	17	61991	1.5	4041	9965	118	183	62292
Minnesota	3821	292	-386	8	4	35317	1.3	-1392	1100	74	123	35514
Mississippi	2692	552	-382	4	3	12407	1.1	325	-1031	92	49	12548
Missouri	5975	-2352	-1062	17	9	25719	1.0	3341	-4160	86	89	25894
Montana	883	-49	45	1	2	7463	1.7	106	672	64	46	7573
Nebraska	892	3	-362	1	3	4282	0.5	133	-1635	21	20	4323
Nevada	2539	-45	-420	5	2	23048	1.9	160	-2377	93	120	23261
New Hampshire	537	-18	-180	2	0	4382	0.7	-95	-518	3	19	4404
New Jersey	8233	-801	127	11	21	91440	2.4	-808	-1921	203	355	91998
New Mexico	1352	308	43	1	1	13195	1.7	-267	-60	117	77	13389
New York	15555	-1570	-675	27	45	145549	1.6	-4199	-5911	357	627	146533
North Carolina	4150	94	-659	8	35	25933	0.6	568	-8114	109	300	26342
North Dakota	481	-14	-16	1	1	4753	1.1	-234	1346	12	0	4765
Ohio	7073	-537	3	7	26	57939	1.1	-3356	183	75	346	58360
Oklahoma	2175	170	157	5	9	23686	1.5	73	1305	71	144	23901
Oregon	5223	1882	637	70	23	27076	1.6	-195	-4209	221	180	27477
Pennsylvania	15866	-2016	-97	60	50	129315	2.3	4896	7803	494	440	130249
Puerto Rico	1834	342	-658	1	5	20979	2.4	-797	-5419	52	166	21197
Rhode Island	876	17	-12	2	1	8170	1.8	-455	-359	23	21	8214
South Carolina	2906	-134	-40	4	14	14534	0.8	456	-470	58	130	14722
South Dakota	261	18	-3	42	0	1281	0.3	-99	-88	24	7	1312
Tennessee	3981	2426	60	9	9	18162	0.7	-2985	-6314	90	138	18390
Texas	17421	75	-174	31	171	182079	1.6	6340	12179	460	2294	184833
Utah	1219	111	-148	12	6	9651	0.7	-145	-1136	52	31	9734
Vermont	777	221	283	2	0	4354	1.5	-427	-155	24	5	4383
Virgin Islands	38	-7	-16	0	1	590	1.6	54	-152	10	8	608
Virginia	4055	329	274	7	19	28540	0.8	200	318	237	469	29246
Washington	5964	-61	-125	23	83	46587	1.5	-696	-3096	186	810	47583
West Virginia	1387	194	-83	3	4	17275	2.6	-35	3473	38	57	17370
Wisconsin	5520	372	-850	3	4	31431	1.1	-497	-8536	60	65	31556
Wyoming	574	62	43	1	2	7795	2.8	-212	2128	52	28	7875
Totals	240798	-4071	-12656	718	1032	2009243	1.5	-5573	-69948	7712	13526	2030481

Figures Appearing In columns showing Over-The-Week Changes reflect all revisions in data for prior week submitted by State agencies.

1. The Unemployment Compensation program for Federal Employees (UCFE) and the Unemployment Compensation for Ex-servicemembers (UCX) exclude claims filed jointly under other programs to avoid duplication.
2. Rate is not seasonally adjusted. The source of US total covered employment is BLS.

UNADJUSTED INITIAL CLAIMS FOR WEEK ENDED MAY 21, 2016

STATES WITH AN INCREASE OF MORE THAN 1,000

State	Change	State Supplied Comment
TN	+2,426	No comment.
OR	+1,882	No comment.

STATES WITH A DECREASE OF MORE THAN 1,000

State	Change	State Supplied Comment
MI	-3,075	Fewer layoffs in the manufacturing industry.
CA	-2,952	Fewer layoffs in the service industry.
MO	-2,352	Fewer layoffs in the manufacturing, other service, and administrative, support, waste management and remediation service industries.
PA	-2,016	Fewer layoffs in the accommodation and food service, construction, and manufacturing industries.
NY	-1,570	Fewer layoffs in the construction, information, and transportation and warehousing industries.

TECHNICAL NOTES

This news release presents the weekly unemployment insurance (UI) claims reported by each state's unemployment insurance program offices. These claims may be used for monitoring workload volume, assessing state program operations and for assessing labor market conditions. States initially report claims directly taken by the state liable for the benefit payments, regardless of where the claimant who filed the claim resided. These are the basis for the advance initial claims and continued claims reported each week. These data come from ETA 538, Advance Weekly Initial and Continued Claims Report. The following week initial claims and continued claims are revised based on a second reporting by states that reflect the claimants by state of residence. These data come from the ETA 539, Weekly Claims and Extended Benefits Trigger Data Report.

A. Initial Claims

An initial claim is a claim filed by an unemployed individual after a separation from an employer. The claimant requests a determination of basic eligibility for the UI program. When an initial claim is filed with a state, certain programmatic activities take place and these result in activity counts including the count of initial claims. The count of U.S. initial claims for unemployment insurance is a leading economic indicator because it is an indication of emerging labor market conditions in the country. However, these are weekly administrative data which are difficult to seasonally adjust, making the series subject to some volatility.

B. Continued Weeks Claimed

A person who has already filed an initial claim and who has experienced a week of unemployment then files a continued claim to claim benefits for that week of unemployment. Continued claims are also referred to as insured unemployment. The count of U.S. continued weeks claimed is also a good indicator of labor market conditions. Continued claims reflect the current number of insured unemployed workers filing for UI benefits in the nation. While continued claims are not a leading indicator (they roughly coincide with economic cycles at their peaks and lag at cycle troughs), they provide confirming evidence of the direction of the U.S. economy.

C. Seasonal Adjustments and Annual Revisions

Over the course of a year, the weekly changes in the levels of initial claims and continued claims undergo regularly occurring fluctuations. These fluctuations may result from seasonal changes in weather, major holidays, the opening and closing of schools, or other similar events. Because these seasonal events follow a more or less regular pattern each year, their influence on the level of a series can be tempered by adjusting for regular seasonal variation. These adjustments make trend and cycle developments easier to spot. At the beginning of each calendar year, the Bureau of Labor Statistics provides the Employment and Training Administration (ETA) with a set of seasonal factors to apply to the unadjusted data during that year. Concurrent with the implementation and release of the new seasonal factors, ETA incorporates revisions to the UI claims historical series caused by updates to the unadjusted data.

[Weekly Claims Archives](#)
[Weekly Claims Data](#)

U.S. Department of Labor news materials are accessible at <http://www.dol.gov>. The Departments [Reasonable Accommodation Resource Center](#) converts Departmental information and documents into alternative formats, which include Braille and large print. For alternative format requests, please contact the Department at (202) 693-7828 (voice) or (800) 877-8339 (federal relay).

U.S. Department of Labor
Employment and Training Administration
Washington, D.C. 20210
Release Number: USDL 16-1119-NAT

Program Contacts:
Brenda Loya (202) 693-3760
Tony Sznoluch (202) 693-3176
Media Contact: (202) 693-4676