



News Release

Connect with DOL at <http://blog.dol.gov>



TRANSMISSION OF MATERIALS IN THIS RELEASE IS EMBARGOED UNTIL
8:30 A.M. (Eastern) Thursday, September 10, 2015

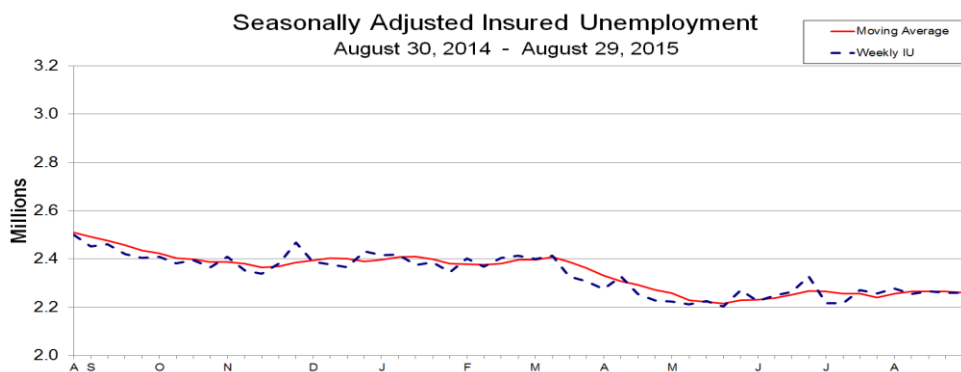
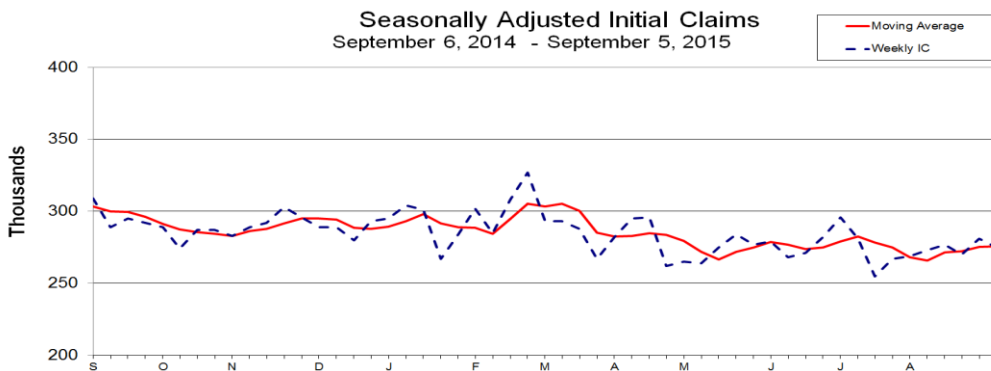
UNEMPLOYMENT INSURANCE WEEKLY CLAIMS

SEASONALLY ADJUSTED DATA

In the week ending September 5, the advance figure for seasonally adjusted **initial claims** was 275,000, a decrease of 6,000 from the previous week's revised level. The previous week's level was revised down by 1,000 from 282,000 to 281,000. The 4-week moving average was 275,750, an increase of 500 from the previous week's revised average. The previous week's average was revised down by 250 from 275,500 to 275,250.

There were no special factors impacting this week's initial claims.

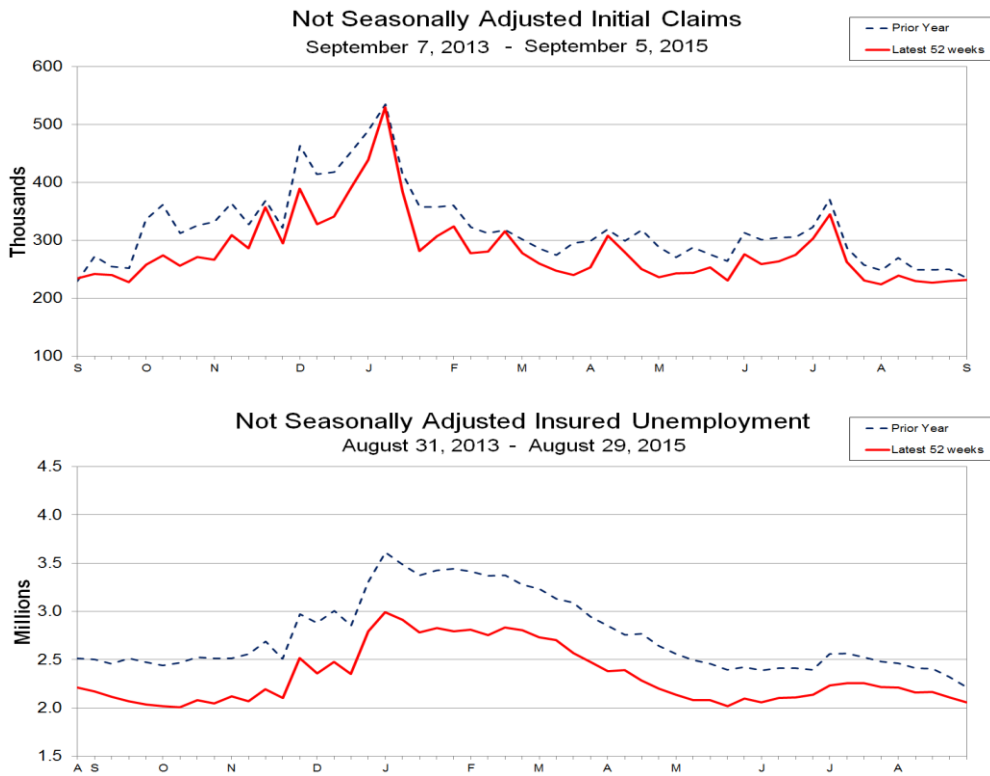
The advance seasonally adjusted **insured unemployment rate** was 1.7 percent for the week ending August 29, unchanged from the previous week's unrevised rate. The advance number for seasonally adjusted **insured unemployment** during the week ending August 29 was 2,260,000, an increase of 1,000 from the previous week's revised level. The previous week's level was revised up 2,000 from 2,257,000 to 2,259,000. The 4-week moving average was 2,260,250, a decrease of 4,500 from the previous week's revised average. The previous week's average was revised up by 500 from 2,264,250 to 2,264,750.



UNADJUSTED DATA

The advance number of actual initial claims under state programs, unadjusted, totaled 231,972 in the week ending September 5, an increase of 1,893 (or 0.8 percent) from the previous week. The seasonal factors had expected an increase of 7,594 (or 3.3 percent) from the previous week. There were 234,755 initial claims in the comparable week in 2014.

The advance unadjusted insured unemployment rate was 1.5 percent during the week ending August 29, a decrease of 0.1 percentage point from the prior week. The advance unadjusted number for persons claiming UI benefits in state programs totaled 2,059,145, a decrease of 48,953 (or -2.3 percent) from the preceding week. The seasonal factors had expected a decrease of 49,709 (or -2.4 percent) from the previous week. A year earlier the rate was 1.7 percent and the volume was 2,212,896.



The total number of people claiming benefits in all programs for the week ending August 22 was 2,153,629, a decrease of 56,574 from the previous week. There were 2,374,314 persons claiming benefits in all programs in the comparable week in 2014.

No state was triggered "on" the Extended Benefits program during the week ending August 22.

Initial claims for UI benefits filed by former Federal civilian employees totaled 1,825 in the week ending August 29, an increase of 931 from the prior week. There were 1,378 initial claims filed by newly discharged veterans, a decrease of 55 from the preceding week.

There were 10,267 former Federal civilian employees claiming UI benefits for the week ending August 22, a decrease of 186 from the previous week. Newly discharged veterans claiming benefits totaled 18,271, a decrease of 124 from the prior week.

The highest insured unemployment rates in the week ending August 22 were in Puerto Rico (3.4), New Jersey (2.9), Connecticut (2.7), Pennsylvania (2.4), Alaska (2.3), California (2.3), Nevada (2.2), Rhode Island (2.2), Massachusetts (2.1), and the Virgin Islands (2.1).

The largest increases in initial claims for the week ending August 29 were in New York (+4,642), Ohio (+1,027), Indiana (+824), Oregon (+809), and Illinois (+586), while the largest decreases were in Pennsylvania (-1,549), California (-1,301), Michigan (-703), Puerto Rico (-636), and New Jersey (-545).

UNEMPLOYMENT INSURANCE DATA FOR REGULAR STATE PROGRAMS

WEEK ENDING	September 5	August 29	Change	August 22	<u>Prior Year</u>¹
Initial Claims (SA)	275,000	281,000	-6,000	270,000	309,000
Initial Claims (NSA)	231,972	230,079	+1,893	226,649	234,755
4-Wk Moving Average (SA)	275,750	275,250	+500	272,250	303,500
WEEK ENDING	August 29	August 22	Change	August 15	<u>Prior Year</u>¹
Insured Unemployment (SA)	2,260,000	2,259,000	+1,000	2,266,000	2,500,000
Insured Unemployment (NSA)	2,059,145	2,108,098	-48,953	2,163,706	2,212,896
4-Wk Moving Average (SA)	2,260,250	2,264,750	-4,500	2,264,500	2,509,250
<u>Insured Unemployment Rate (SA)</u> ²	1.7%	1.7%	0.0	1.7%	1.9%
<u>Insured Unemployment Rate (NSA)</u> ²	1.5%	1.6%	-0.1	1.6%	1.7%

INITIAL CLAIMS FILED IN FEDERAL PROGRAMS (UNADJUSTED)

WEEK ENDING	August 29	August 22	Change	<u>Prior Year</u>¹
Federal Employees (UCFE)	1,825	894	+931	1,176
Newly Discharged Veterans (UCX)	1,378	1,433	-55	1,882

PERSONS CLAIMING UI BENEFITS IN ALL PROGRAMS (UNADJUSTED)

WEEK ENDING	August 22	August 15	Change	<u>Prior Year</u>¹
Regular State	2,103,702	2,158,594	-54,892	2,314,948
Federal Employees	10,267	10,453	-186	15,250
Newly Discharged Veterans	18,271	18,395	-124	24,440
<u>Extended Benefits</u> ³	0	0	0	10
<u>State Additional Benefits</u> ⁴	6,361	6,298	+63	4,754
<u>STC / Workshare</u> ⁵	15,028	16,463	-1,435	14,912
<u>TOTAL</u>	2,153,629	2,210,203	-56,574	2,374,314

FOOTNOTES

SA - Seasonally Adjusted Data, NSA - Not Seasonally Adjusted Data

1. Prior year is comparable to most recent data.
2. Most recent week used covered employment of 134,803,907 as denominator.
3. Information on the EB program can be found here: [EB Program information](#)
4. Some states maintain additional benefit programs for those claimants who exhaust regular, extended and emergency benefits. Information on states that participate, and the extent of benefits paid, can be found starting on page 4-5 of this link: [Extensions and Special Programs PDF](#)
5. Information on STC/Worksharing can be found starting on page 4-9 of the following link: [Extensions and Special Programs PDF](#)

Advance State Claims - Not Seasonally Adjusted

STATE	Initial Claims Filed During Week Ended September 5			Insured Unemployment For Week Ended August 29		
	Advance	Prior Wk	Change	Advance	Prior Wk	Change
Alabama	2,775	3,178	-403	21,188	22,646	-1,458
Alaska	1,303	991	312	6,942	7,187	-245
Arizona	3,843	3,797	46	32,276	37,297	-5,021
Arkansas	2,102	2,397	-295	18,826	19,692	-866
California	42,283	41,597	686	355,398	355,479	-81
Colorado	2,573	2,259	314	25,795	26,134	-339
Connecticut	2,947	2,948	-1	41,544	43,958	-2,414
Delaware	569	609	-40	6,598	6,777	-179
District of Columbia	263	347	-84	8,579	9,100	-521
Florida	8,218	8,712	-494	59,722	67,085	-7,363
Georgia	5,951	6,003	-52	34,173	36,922	-2,749
* Hawaii	1,393	1,384	9	7,045	7,275	-230
Idaho	1,065	892	173	5,194	6,417	-1,223
Illinois	10,478	9,574	904	109,512	109,812	-300
Indiana	3,222	3,675	-453	21,490	21,586	-96
Iowa	2,791	2,120	671	17,545	17,922	-377
Kansas	2,124	1,854	270	13,188	12,051	1,137
Kentucky	2,423	2,601	-178	20,157	20,955	-798
Louisiana	2,146	2,442	-296	23,175	25,353	-2,178
Maine	629	615	14	5,057	5,613	-556
Maryland	3,573	3,354	219	34,713	40,832	-6,119
Massachusetts	5,048	4,826	222	65,454	68,898	-3,444
Michigan	5,490	5,214	276	46,115	53,663	-7,548
Minnesota	3,364	3,326	38	32,035	30,583	1,452
Mississippi	1,381	1,661	-280	12,692	14,831	-2,139
Missouri	3,876	4,033	-157	25,552	29,753	-4,201
Montana	777	792	-15	4,924	5,560	-636
Nebraska	718	712	6	5,274	5,428	-154
Nevada	3,079	2,983	96	24,315	25,742	-1,427
New Hampshire	597	561	36	4,665	5,273	-608
New Jersey	7,877	7,401	476	112,501	111,544	957
New Mexico	930	1,020	-90	11,171	11,626	-455
New York	17,096	20,966	-3,870	171,379	171,158	221
North Carolina	4,086	3,771	315	29,317	31,615	-2,298
North Dakota	646	301	345	5,374	2,728	2,646
Ohio	7,566	7,677	-111	53,194	54,079	-885
Oklahoma	2,023	1,996	27	21,345	21,803	-458
Oregon	3,661	4,707	-1,046	29,943	29,688	255
Pennsylvania	15,350	14,931	419	140,540	134,854	5,686
Puerto Rico	2,146	1,394	752	27,293	30,644	-3,351
Rhode Island	939	901	38	9,543	10,146	-603
South Carolina	2,476	2,577	-101	15,699	17,105	-1,406
South Dakota	164	186	-22	1,108	1,260	-152
Tennessee	2,741	3,346	-605	23,121	25,281	-2,160
Texas	17,268	15,925	1,343	175,807	173,055	2,752
Utah	1,204	1,158	46	8,275	9,070	-795
Vermont	330	347	-17	3,320	3,776	-456
Virgin Islands	69	61	8	914	792	122
Virginia	3,526	3,086	440	30,128	27,206	2,922
Washington	7,524	5,761	1,763	44,796	43,922	874
West Virginia	1,068	1,187	-119	13,750	13,794	-44
Wisconsin	5,888	5,577	311	37,360	38,904	-1,544
Wyoming	393	346	47	4,124	4,224	-100
US Total	231,972	230,079	1,893	2,059,145	2,108,098	-48,953

Note: Advance Claims are not directly comparable to claims reported in prior weeks. Advance claims are reported by the state liable for paying the unemployment compensation, whereas previous weeks reported reflect claimants by state of residence. In addition, claims reported as "workshare equivalent" in the previous week are added to the advance claims as a proxy for the current week's "workshare equivalent" activity.

*Denotes estimate by ETA staff.

Seasonally Adjusted US Weekly UI Claims (in thousands)

Week Ending	Change from			Insured Unemployment	Change from			IUR
	Initial Claims	Prior Week	4-Week Average		Prior Week	4-Week Average		
August 30, 2014	305	8	303.25	2,500	9	2,509.25	1.9	
September 6, 2014	309	4	303.50	2,452	-48	2,492.75	1.9	
September 13, 2014	289	-20	300.00	2,460	8	2,475.75	1.9	
September 20, 2014	295	6	299.50	2,421	-39	2,458.25	1.8	
September 27, 2014	292	-3	296.25	2,404	-17	2,434.25	1.8	
October 4, 2014	289	-3	291.25	2,409	5	2,423.50	1.8	
October 11, 2014	274	-15	287.50	2,383	-26	2,404.25	1.8	
October 18, 2014	287	13	285.50	2,395	12	2,397.75	1.8	
October 25, 2014	287	0	284.25	2,365	-30	2,388.00	1.8	
November 1, 2014	283	-4	282.75	2,408	43	2,387.75	1.8	
November 8, 2014	289	6	286.50	2,352	-56	2,380.00	1.8	
November 15, 2014	292	3	287.75	2,339	-13	2,366.00	1.8	
November 22, 2014	303	11	291.75	2,383	44	2,370.50	1.8	
November 29, 2014	296	-7	295.00	2,469	86	2,385.75	1.9	
December 6, 2014	289	-7	295.00	2,388	-81	2,394.75	1.8	
December 13, 2014	289	0	294.25	2,377	-11	2,404.25	1.8	
December 20, 2014	280	-9	288.50	2,366	-11	2,400.00	1.8	
December 27, 2014	293	13	287.75	2,431	65	2,390.50	1.8	
January 3, 2015	295	2	289.25	2,415	-16	2,397.25	1.8	
January 10, 2015	304	9	293.00	2,418	3	2,407.50	1.8	
January 17, 2015	301	-3	298.25	2,376	-42	2,410.00	1.8	
January 24, 2015	267	-34	291.75	2,386	10	2,398.75	1.8	
January 31, 2015	284	17	289.00	2,346	-40	2,381.50	1.8	
February 7, 2015	302	18	288.50	2,402	56	2,377.50	1.8	
February 14, 2015	285	-17	284.50	2,369	-33	2,375.75	1.8	
February 21, 2015	308	23	294.75	2,405	36	2,380.50	1.8	
February 28, 2015	327	19	305.50	2,414	9	2,397.50	1.8	
March 7, 2015	293	-34	303.25	2,399	-15	2,396.75	1.8	
March 14, 2015	293	0	305.25	2,413	14	2,407.75	1.8	
March 21, 2015	288	-5	300.25	2,327	-86	2,388.25	1.7	
March 28, 2015	267	-21	285.25	2,308	-19	2,361.75	1.7	
April 4, 2015	282	15	282.50	2,275	-33	2,330.75	1.7	
April 11, 2015	295	13	283.00	2,327	52	2,309.25	1.7	
April 18, 2015	296	1	285.00	2,256	-71	2,291.50	1.7	
April 25, 2015	262	-34	283.75	2,229	-27	2,271.75	1.7	
May 2, 2015	265	3	279.50	2,223	-6	2,258.75	1.7	
May 9, 2015	264	-1	271.75	2,212	-11	2,230.00	1.6	
May 16, 2015	275	11	266.50	2,226	14	2,222.50	1.7	
May 23, 2015	284	9	272.00	2,204	-22	2,216.25	1.6	
May 30, 2015	277	-7	275.00	2,272	68	2,228.50	1.7	
June 6, 2015	279	2	278.75	2,225	-47	2,231.75	1.7	
June 13, 2015	268	-11	277.00	2,249	24	2,237.50	1.7	
June 20, 2015	271	3	273.75	2,265	16	2,252.75	1.7	
June 27, 2015	282	11	275.00	2,327	62	2,266.50	1.7	
July 4, 2015	296	14	279.25	2,216	-111	2,264.25	1.6	
July 11, 2015	281	-15	282.50	2,216	0	2,256.00	1.6	
July 18, 2015	255	-26	278.50	2,270	54	2,257.25	1.7	
July 25, 2015	267	12	274.75	2,258	-12	2,240.00	1.7	
August 1, 2015	269	2	268.00	2,278	20	2,255.50	1.7	
August 8, 2015	273	4	266.00	2,256	-22	2,265.50	1.7	
August 15, 2015	277	4	271.50	2,266	10	2,264.50	1.7	
August 22, 2015	270	-7	272.25	2,259	-7	2,264.75	1.7	
August 29, 2015	281	11	275.25	2,260	1	2,260.25	1.7	
September 5, 2015	275	-6	275.75					

Initial Claims Filed During Week Ended August 29
INITIAL CLAIMS

Insured Unemployment For Week Ended August 22
INSURED UNEMPLOYMENT

STATE	CHANGE FROM						CHANGE FROM					ALL PROGRAMS EXCLUDING RAILROAD RETIREMENT
	STATE	LAST WEEK	YEAR AGO	UCFE ¹	UCX ¹	STATE	LAST WEEK	YEAR AGO	UCFE ¹	UCX ¹		
Alabama	3178	297	124	7	15	22646	1.3	-656	-3448	115	177	22938
Alaska	991	24	-191	2	0	7187	2.3	-192	-1870	75	60	7322
Arizona	3797	-66	-424	8	12	37297	1.5	-700	-3141	153	224	37674
Arkansas	2397	194	177	6	7	19692	1.7	-1101	-1353	104	172	19968
California	41597	-1301	-7105	186	218	355479	2.3	-7620	-35033	1987	3679	361145
Colorado	2259	95	-26	37	46	26134	1.1	-148	-2246	164	718	27016
Connecticut	2948	-286	-30	6	14	43958	2.7	-178	-5495	101	149	44208
Delaware	609	-51	-24	1	0	6777	1.6	-167	-1739	14	35	6826
District of Columbia	347	12	-14	7	1	9100	1.7	-221	-1761	341	19	9460
Florida	8712	-480	-4384	110	92	67085	0.9	-4077	-25280	182	430	67697
Georgia	6003	-26	-761	27	47	36922	0.9	-430	-7469	271	658	37851
Hawaii	1384	427	0	7	19	7275	1.2	222	-1851	95	159	7529
Idaho	892	-214	-128	3	5	6417	1.0	-99	-1533	28	37	6482
Illinois	9574	586	730	10	25	109812	1.9	-6164	-11069	431	509	110752
Indiana	3675	824	-396	38	14	21586	0.8	569	-2959	89	125	21800
Iowa	2120	-263	-354	4	6	17922	1.2	-234	1706	72	106	18100
Kansas	1854	90	-236	3	11	12051	0.9	-2185	-2917	64	153	12268
Kentucky	2601	58	72	80	13	20955	1.2	-543	-2208	371	321	21647
Louisiana	2442	28	205	3	8	25353	1.3	-297	3890	32	82	25467
Maine	615	-217	-160	1	0	5613	1.0	-463	-1788	19	32	5664
Maryland	3354	-168	-366	67	18	40832	1.7	-728	-9037	318	309	41459
Massachusetts	4826	-384	-580	15	29	68898	2.1	-112	-13065	209	385	69492
Michigan	5214	-703	-4483	17	14	53663	1.3	4058	-8872	122	301	54086
Minnesota	3326	362	516	6	10	30583	1.1	-441	-1369	71	155	30809
Mississippi	1661	-31	82	3	3	14831	1.4	-887	-3996	74	60	14965
Missouri	4033	-168	-407	216	12	29753	1.1	-3683	-4426	408	152	30313
Montana	792	36	46	4	5	5560	1.3	-322	-360	44	61	5665
Nebraska	712	-93	-256	2	4	5428	0.6	-926	-961	39	27	5494
Nevada	2983	419	-198	4	8	25742	2.2	-133	904	65	165	25972
New Hampshire	561	-22	-100	0	4	5273	0.9	-35	-2076	11	7	5291
New Jersey	7401	-545	-245	23	37	111544	2.9	-1715	-12681	232	530	112306
New Mexico	1020	-3	-93	6	11	11626	1.5	-534	-1621	83	95	11804
New York	20966	4642	-4	102	71	171158	2.0	4877	-17203	531	908	172597
North Carolina	3771	128	-1102	12	47	31615	0.8	-1869	-17824	132	393	32140
North Dakota	301	10	137	1	2	2728	0.6	-538	1118	45	9	2782
Ohio	7677	1027	967	94	50	54079	1.1	-2100	-4631	115	446	54640
Oklahoma	1996	217	536	6	16	21803	1.4	-357	6175	89	161	22053
Oregon	4707	809	236	50	34	29688	1.7	370	-2770	187	300	30175
Pennsylvania	14931	-1549	-130	208	74	134854	2.4	-9436	-10477	652	593	136099
Puerto Rico	1394	-636	-758	53	11	30644	3.4	-2146	-4839	66	227	30937
Rhode Island	901	-102	-123	1	3	10146	2.2	-190	-1146	21	50	10217
South Carolina	2577	-119	-500	5	21	17105	0.9	-887	-2453	54	137	17296
South Dakota	186	29	0	1	0	1260	0.3	-62	28	96	7	1363
Tennessee	3346	-213	31	25	29	25281	0.9	-820	-5069	139	196	25616
Texas	15925	558	1836	159	163	173055	1.5	-8382	30743	816	2789	176660
Utah	1158	-33	-49	73	9	9070	0.7	-184	-1004	269	60	9399
Vermont	347	-17	-29	5	0	3776	1.3	-168	-259	9	9	3794
Virgin Islands	61	15	-7	0	0	792	2.1	-14	-96	2	18	812
Virginia	3086	51	-772	36	35	27206	0.8	-1528	-6508	240	664	28110
Washington	5761	5	-318	80	89	43922	1.5	-937	-3328	221	1027	45170
West Virginia	1187	11	163	0	6	13794	2.0	189	1063	82	70	13946
Wisconsin	5577	219	-855	4	8	38904	1.4	-981	-9301	97	91	39092
Wyoming	346	-53	49	1	2	4224	1.5	-303	1765	20	24	4268
Totals	230079	3430	-19701	1825	1378	2108098	1.6	-55608	-211140	10267	18271	2136636

Figures Appearing In columns showing Over-The-Week Changes reflect all revisions in data for prior week submitted by State agencies.

1. The Unemployment Compensation program for Federal Employees (UCFE) and the Unemployment Compensation for Ex-servicemembers (UCX) exclude claims filed jointly under other programs to avoid duplication.
2. Rate is not seasonally adjusted. The source of US total covered employment is BLS.

UNADJUSTED INITIAL CLAIMS FOR WEEK ENDED AUGUST 29, 2015

STATES WITH AN INCREASE OF MORE THAN 1,000

State	Change	State Supplied Comment
NY	+4,642	Layoffs in the transportation and warehousing, educational service and manufacturing industries.
OH	+1,027	No comment.

STATES WITH A DECREASE OF MORE THAN 1,000

State	Change	State Supplied Comment
PA	-1,549	Layoffs in the manufacturing, transportation and warehousing, and accommodation and food service industries.
CA	-1,301	No comment.

TECHNICAL NOTES

This news release presents the weekly unemployment insurance (UI) claims reported by each state's unemployment insurance program offices. These claims may be used for monitoring workload volume, assessing state program operations and for assessing labor market conditions. States initially report claims directly taken by the state liable for the benefit payments, regardless of where the claimant who filed the claim resided. These are the basis for the advance initial claims and continued claims reported each week. These data come from ETA 538, Advance Weekly Initial and Continued Claims Report. The following week initial claims and continued claims are revised based on a second reporting by states that reflect the claimants by state of residence. These data come from the ETA 539, Weekly Claims and Extended Benefits Trigger Data Report.

A. Initial Claims

An initial claim is a claim filed by an unemployed individual after a separation from an employer. The claimant requests a determination of basic eligibility for the UI program. When an initial claim is filed with a state, certain programmatic activities take place and these result in activity counts including the count of initial claims. The count of U.S. initial claims for unemployment insurance is a leading economic indicator because it is an indication of emerging labor market conditions in the country. However, these are weekly administrative data which are difficult to seasonally adjust, making the series subject to some volatility.

B. Continued Weeks Claimed

A person who has already filed an initial claim and who has experienced a week of unemployment then files a continued claim to claim benefits for that week of unemployment. Continued claims are also referred to as insured unemployment. The count of U.S. continued weeks claimed is also a good indicator of labor market conditions. Continued claims reflect the current number of insured unemployed workers filing for UI benefits in the nation. While continued claims are not a leading indicator (they roughly coincide with economic cycles at their peaks and lag at cycle troughs), they provide confirming evidence of the direction of the U.S. economy.

C. Seasonal Adjustments and Annual Revisions

Over the course of a year, the weekly changes in the levels of initial claims and continued claims undergo regularly occurring fluctuations. These fluctuations may result from seasonal changes in weather, major holidays, the opening and closing of schools, or other similar events. Because these seasonal events follow a more or less regular pattern each year, their influence on the level of a series can be tempered by adjusting for regular seasonal variation. These adjustments make trend and cycle developments easier to spot. At the beginning of each calendar year, the Bureau of Labor Statistics provides the Employment and Training Administration (ETA) with a set of seasonal factors to apply to the unadjusted data during that year. Concurrent with the implementation and release of the new seasonal factors, ETA incorporates revisions to the UI claims historical series caused by updates to the unadjusted data.

[Weekly Claims Archives](#)

[Weekly Claims Data](#)

U.S. Department of Labor news materials are accessible at <http://www.dol.gov>. The Department's [Reasonable Accommodation Resource Center](#) converts Departmental information and documents into alternative formats, which include Braille and large print. For alternative format requests, please contact the Department at (202) 693-7828 (voice) or (800) 877-8339 (federal relay).

U.S. Department of Labor
Employment and Training Administration
Washington, D.C. 20210
Release Number: USDL 15-1760-NAT

Program Contacts:
Brenda Loya (202) 693-3760
Tony Sznoluch (202) 693-3176
Media Contact: (202) 693-4676