



Transmission of material in this release is embargoed until
8:30 a.m. (ET) Tuesday, August 13, 2024

USDL 24-1661

Technical information: (202) 691-7705 • ppi-info@bls.gov • www.bls.gov/ppi
 Media contact: (202) 691-5902 • PressOffice@bls.gov

PRODUCER PRICE INDEXES – JULY 2024

The Producer Price Index for final demand increased 0.1 percent in July, seasonally adjusted, the U.S. Bureau of Labor Statistics reported today. Final demand prices rose 0.2 percent in June and were unchanged in May. (See table A.) On an unadjusted basis, the index for final demand advanced 2.2 percent for the 12 months ended in July.

The July rise in the index for final demand can be attributed to prices for final demand goods, which moved up 0.6 percent. In contrast, the index for final demand services fell 0.2 percent.

Prices for final demand less foods, energy, and trade services advanced 0.3 percent in July after increasing 0.1 percent in June. For the 12 months ended in July, the index for final demand less foods, energy, and trade services moved up 3.3 percent.

Chart 1. One-month percent changes in selected PPI final demand price indexes, seasonally adjusted

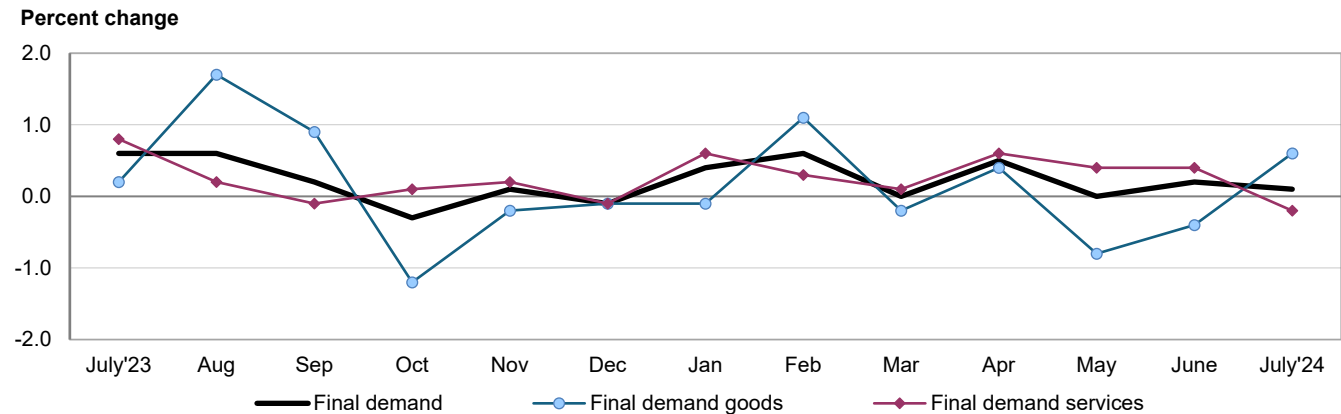
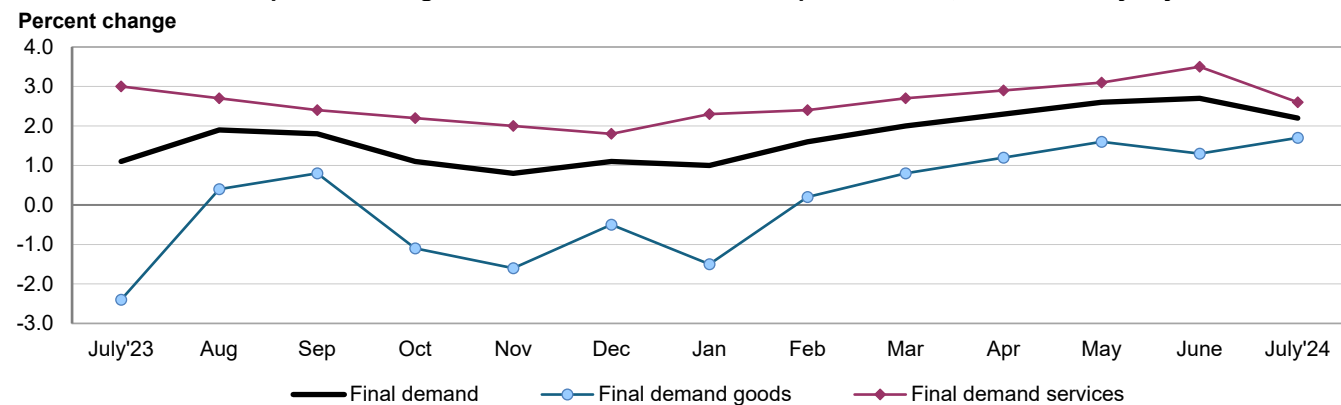


Chart 2. Twelve-month percent changes in selected PPI final demand price indexes, not seasonally adjusted



Final Demand

Final demand goods: Prices for final demand goods rose 0.6 percent in July, the largest advance since a 1.1-percent jump in February. Nearly 60 percent of the broad-based increase in July can be traced to the index for final demand energy, which moved up 1.9 percent. Prices for final demand goods less foods and energy and for final demand foods also rose, 0.2 percent and 0.6 percent, respectively.

Product detail: A quarter of the July rise in the index for final demand goods is attributable to a 2.8-percent advance in prices for gasoline. The indexes for diesel fuel, meats, jet fuel, fresh fruits and melons, and basic organic chemicals also increased. Conversely, prices for electric power decreased 1.1 percent. The indexes for fresh and dry vegetables and for steel mill products also moved down. (See table 2.)

Final demand services: Prices for final demand services fell 0.2 percent in July, the largest decrease since moving down 0.2 percent in March 2023. The July decline can be traced to the index for final demand trade services, which dropped 1.3 percent. (Trade indexes measure changes in margins received by wholesalers and retailers.) In contrast, prices for final demand services less trade, transportation, and warehousing and for final demand transportation and warehousing services rose 0.3 percent and 0.4 percent, respectively.

Product detail: Leading the July decline in prices for final demand services, margins for machinery and vehicle wholesaling decreased 4.1 percent. The indexes for food and alcohol retailing, automobiles retailing (partial), automotive fuels and lubricants retailing, desktop and portable device application software publishing, and physician care also fell. Conversely, prices for portfolio management advanced 2.3 percent. The indexes for chemicals and allied products wholesaling and for truck transportation of freight also rose.

Table A. Monthly and 12-month percent changes in selected final demand price indexes, seasonally adjusted

Month	Total final demand	Final demand less foods, energy, and trade	Final demand goods				Final demand services				Change in final demand from 12 months ago (unadj.)	Change in final demand less foods, energy, and trade from 12 mo. ago (unadj.)
			Total	Foods	Energy	Less foods and energy	Total	Trade	Transportation and warehousing	Other		
2023												
July....	0.6	0.2	0.2	0.3	0.8	0.0	0.8	1.7	0.2	0.4	1.1	2.9
Aug....	0.6	0.2	1.7	-0.4	8.9	0.1	0.2	-0.1	0.0	0.3	1.9	2.9
Sept...	0.2	0.3	0.9	0.4	3.2	0.3	-0.1	-1.1	0.4	0.3	1.8	2.9
Oct....	-0.3	0.1	-1.2	0.2	-6.4	0.1	0.1	0.0	0.5	0.1	1.1	2.8
Nov....	0.1	0.1	-0.2	0.7	-2.0	0.1	0.2	0.4	-0.2	0.1	0.8	2.5
Dec....	-0.1	0.3	-0.1	0.0	-0.8	0.1	-0.1	-1.2	-0.2	0.5	1.1	2.7
2024												
Jan.. ..	0.4	0.6	-0.1	-0.3	-1.1	0.3	0.6	0.1	-0.2	0.9	1.0	2.7
Feb.. ..	0.6	0.4	1.1	1.0	3.9	0.3	0.3	0.3	1.2	0.3	1.6	2.8
Mar. ¹ ..	0.0	0.2	-0.2	0.3	-1.2	0.0	0.1	-0.4	0.2	0.3	2.0	2.9
Apr. ¹ ..	0.5	0.5	0.4	-0.7	1.8	0.3	0.6	0.5	-0.5	0.7	2.3	3.2
May ¹ ..	0.0	0.2	-0.8	-0.1	-4.6	0.2	0.4	0.7	-0.8	0.4	2.6	3.4
June ¹ ..	0.2	0.1	-0.4	0.1	-2.1	0.0	0.4	1.4	-0.1	0.1	2.7	3.2
July....	0.1	0.3	0.6	0.6	1.9	0.2	-0.2	-1.3	0.4	0.3	2.2	3.3

¹ Some of the figures shown above and elsewhere in this release may differ from those previously reported because data for March 2024 through June 2024 have been revised to reflect the availability of late reports and corrections by respondents.

Intermediate Demand by Commodity Type

Within intermediate demand in July, prices for processed goods advanced 0.7 percent, the index for unprocessed goods increased 3.6 percent, and prices for services rose 0.3 percent. (See tables B and C.)

Processed goods for intermediate demand: The index for processed goods for intermediate demand rose 0.7 percent in July, the largest advance since moving up 1.4 percent in February. Over 70 percent of the broad-based increase in July is attributable to a 2.8-percent jump in prices for processed energy goods. The indexes for processed foods and feeds and for processed materials less foods and energy also advanced, 1.3 percent and 0.1 percent, respectively. For the 12 months ended in July, prices for processed goods for intermediate demand moved up 0.8 percent, the first increase since a 2.1-percent rise for the 12 months ended February 2023.

Product detail: Over 60 percent of the July increase in prices for processed goods for intermediate demand can be traced to a 12.9-percent jump in the diesel fuel index. Prices for basic organic chemicals, meats, gasoline, jet fuel, and utility natural gas also moved higher. In contrast, the index for commercial electric power fell 1.2 percent. Prices for cold rolled steel sheet and strip and for processed poultry also declined.

Unprocessed goods for intermediate demand: The index for unprocessed goods for intermediate demand moved up 3.6 percent in July, the largest advance since rising 4.6 percent in August 2022. Nearly two-thirds of the broad-based increase in July is attributable to a 6.2-percent jump in prices for unprocessed energy materials. The indexes for unprocessed foodstuffs and feedstuffs and for unprocessed nonfood materials less energy also advanced, 2.9 percent and 0.7 percent, respectively. For the 12 months ended in July, prices for unprocessed goods for intermediate demand moved up 3.2 percent, the largest increase since rising 10.7 percent for the 12 months ended December 2022.

Product detail: Over 40 percent of the July advance in the index for unprocessed goods for intermediate demand can be traced to a 5.5-percent increase in crude petroleum prices. The indexes for natural gas, slaughter poultry, raw milk, slaughter cattle, and carbon steel scrap also moved higher. Conversely, corn prices decreased 5.4 percent. The indexes for wheat and for raw cotton also declined.

Table B. Monthly and 12-month percent changes in selected intermediate demand price indexes for goods by commodity type, seasonally adjusted

Month	Processed goods for intermediate demand					Unprocessed goods for intermediate demand				
	Total	Foods and feeds	Energy goods	Less foods and energy	Total, change from 12 months ago (unadj.)	Total	Food-stuffs and feed-stuffs	Energy materials	Nonfood materials less energy	Total, change from 12 months ago (unadj.)
2023										
July.....	-0.3	1.0	-0.2	-0.5	-7.6	2.5	-0.8	10.1	-2.9	-24.1
Aug.....	2.0	0.6	11.2	-0.2	-4.4	2.1	-0.1	6.0	-0.2	-26.2
Sept.....	0.5	0.7	2.1	0.0	-3.7	2.9	1.2	6.8	-0.4	-21.5
Oct.....	-1.0	-0.2	-4.3	-0.1	-4.6	-1.6	-2.1	-2.1	0.0	-14.8
Nov.....	-0.7	-0.5	-2.6	-0.3	-4.6	-2.1	-0.4	-5.3	0.7	-14.0
Dec.....	-0.4	0.1	-2.9	0.2	-2.8	-4.1	-3.3	-7.6	0.3	-18.7
2024										
Jan.....	-0.1	-1.7	-1.0	0.3	-3.7	1.6	-1.5	6.4	-1.3	-13.5
Feb.....	1.4	0.3	5.5	0.5	-2.0	-0.3	1.6	-1.1	-1.7	-9.3
Mar. ¹	-0.6	0.2	-1.0	-0.5	-1.8	-1.4	1.6	-5.4	0.5	-6.3
Apr. ¹	0.6	-0.2	1.8	0.3	-0.6	2.1	-0.6	6.0	0.5	-5.0
May ¹	-1.4	0.2	-7.5	0.1	-0.7	0.1	2.8	-3.9	1.9	-0.1
June ¹	-0.2	0.7	-0.9	-0.1	-0.3	0.8	-1.2	3.8	-0.5	1.9
July.....	0.7	1.3	2.8	0.1	0.8	3.6	2.9	6.2	0.7	3.2

¹ Some of the figures shown above and elsewhere in this release may differ from those previously reported because data for March 2024 through June 2024 have been revised to reflect the availability of late reports and corrections by respondents.

Services for intermediate demand: The index for services for intermediate demand moved up 0.3 percent in July, the fifth consecutive increase. A major factor in the broad-based July advance was a 0.3-percent rise in prices for services less trade, transportation, and warehousing. The indexes for trade services for intermediate demand and for transportation and warehousing services for intermediate demand each inched up 0.1 percent. For the 12 months ended in July, prices for services for intermediate demand increased 3.3 percent.

Product detail: Over 40 percent of the July advance in the index for services for intermediate demand can be traced to a 1.5-percent rise in prices for nonresidential real estate services. The indexes for securities brokerage, dealing, investment advice, and related services; machinery and equipment parts and supplies wholesaling; portfolio management; chemicals and allied products wholesaling; and truck transportation of freight also moved higher. In contrast, prices for business loans (partial) fell 2.0 percent. The indexes for automotive fuels and lubricants retailing and for arrangement of freight and cargo transportation also declined.

Table C. Monthly and 12-month percent changes in selected intermediate demand price indexes for services by commodity type, seasonally adjusted

Month	Services for intermediate demand				Total, change from 12 months ago (unadj.)
	Total	Trade	Transportation and warehousing	Other	
2023					
July.....	0.7	2.1	0.9	0.2	4.7
Aug.....	-0.1	-0.6	-0.7	0.1	4.2
Sept.....	0.3	-0.4	0.8	0.4	4.0
Oct.....	0.0	1.5	0.4	-0.5	3.5
Nov.....	0.5	1.5	-0.2	0.4	3.2
Dec.....	0.5	-0.3	1.0	0.6	3.7
2024					
Jan.....	0.9	1.1	-0.1	1.0	3.6
Feb.....	0.0	-1.7	1.0	0.3	3.3
Mar. ¹	0.2	0.1	0.0	0.3	3.8
Apr. ¹	0.3	-0.4	0.5	0.4	3.4
May ¹	0.3	0.6	0.6	0.1	3.6
June ¹	0.2	0.0	-0.3	0.3	3.7
July.....	0.3	0.1	0.1	0.3	3.3

¹ Some of the figures shown above and elsewhere in this release may differ from those previously reported because data for March 2024 through June 2024 have been revised to reflect the availability of late reports and corrections by respondents.

Intermediate Demand by Production Flow

Stage 4 intermediate demand: Prices for stage 4 intermediate demand rose 0.4 percent in July after no change in June. In July, the index for total services inputs to stage 4 intermediate demand advanced 0.5 percent, and prices for total goods inputs moved up 0.2 percent. (See table D.) Increases in the indexes for nonresidential real estate services; securities brokerage, dealing, investment advice, and related services; machinery and equipment parts and supplies wholesaling; portfolio management; diesel fuel; and meats outweighed declining prices for business loans (partial), commercial electric power, and steel mill products. For the 12 months ended in July, the index for stage 4 intermediate demand rose 2.4 percent, the largest advance since moving up 2.4 percent for the 12 months ended August 2023.

Stage 3 intermediate demand: Prices for stage 3 intermediate demand rose 0.8 percent in July, the largest increase since a 1.0-percent advance in February. In July, the index for total goods inputs to stage 3 intermediate demand jumped 1.7 percent, and prices for total services inputs inched up 0.1 percent. Increases in the indexes for diesel fuel, raw milk, slaughter poultry, jet fuel, slaughter cattle, and nonresidential real estate services outweighed declining prices for steel mill products, corn, and business loans (partial). For the 12 months ended in July, the index for stage 3 intermediate demand moved up 2.2 percent, the largest advance since rising 2.4 percent for the 12 months ended February 2023.

Stage 2 intermediate demand: The index for stage 2 intermediate demand rose 1.1 percent in July following an increase of 0.7 percent in June. In July, prices for total goods inputs to stage 2 intermediate demand advanced 2.8 percent. In contrast, the index for total services inputs edged down 0.1 percent. Increasing prices for crude petroleum, natural gas, basic organic chemicals, carbon steel scrap, commissions from sales of insurance, and legal services outweighed decreases in the indexes for business loans (partial), automotive fuels and lubricants retailing, and oilseeds. For the 12 months ended in July, prices for stage 2 intermediate demand rose 2.8 percent.

Stage 1 intermediate demand: Prices for stage 1 intermediate demand advanced 0.7 percent in July after no change in June. In July, the index for total goods inputs to stage 1 intermediate demand rose 0.8 percent, and prices for total services inputs moved up 0.5 percent. Increases in the indexes for diesel fuel; basic organic chemicals; nonresidential real estate services; securities brokerage, dealing, investment advice, and related services; carbon steel scrap; and chemicals and allied products wholesaling outweighed falling prices for steel mill products, corn, and guestroom rental. For the 12 months ended in July, the index for stage 1 intermediate demand rose 1.6 percent, the largest increase since advancing 3.8 percent for the 12 months ended February 2023.

Table D. Monthly percent changes in selected intermediate demand price indexes by production flow, seasonally adjusted

Month	Stage 4 intermediate demand			Stage 3 intermediate demand			Stage 2 intermediate demand			Stage 1 intermediate demand		
	Total	Goods inputs	Services inputs	Total	Goods inputs	Services inputs	Total	Goods inputs	Services inputs	Total	Goods inputs	Services inputs
2023												
July.....	0.4	-0.1	0.8	-0.3	-1.3	0.6	1.9	3.9	0.6	0.1	-0.7	0.9
Aug.....	0.4	0.6	0.3	1.0	3.1	-0.6	0.7	2.2	-0.4	1.3	2.4	0.2
Sept.....	0.3	0.3	0.3	0.5	0.9	0.3	1.2	3.0	-0.1	0.3	0.3	0.2
Oct.....	-0.3	-0.5	-0.2	-0.5	-1.7	0.4	-0.3	-1.1	0.4	-0.4	-0.8	-0.1
Nov.....	0.2	-0.3	0.5	-0.2	-1.1	0.6	-1.0	-2.5	0.2	-0.2	-0.9	0.6
Dec.....	0.2	0.0	0.4	-0.3	-1.6	0.7	-1.1	-3.4	0.5	-0.2	-0.7	0.3
2024												
Jan.....	0.6	-0.1	1.2	0.3	0.0	0.6	1.2	1.7	0.8	0.4	-0.2	1.0
Feb.....	0.1	0.5	-0.2	1.0	2.5	-0.2	0.1	-0.7	0.7	0.4	1.3	-0.5
Mar. ¹	0.1	-0.3	0.4	-0.1	-0.3	0.0	-0.9	-2.5	0.1	-0.3	-0.9	0.3
Apr. ¹	0.4	0.4	0.4	0.2	0.2	0.2	1.4	2.8	0.3	0.3	0.5	0.1
May ¹	-0.1	-0.3	0.1	-0.3	-1.3	0.5	-0.3	-1.3	0.5	-0.7	-1.6	0.2
June ¹	0.0	-0.2	0.1	-0.2	-0.4	-0.1	0.7	1.4	0.3	0.0	-0.3	0.3
July.....	0.4	0.2	0.5	0.8	1.7	0.1	1.1	2.8	-0.1	0.7	0.8	0.5

¹ Some of the figures shown above and elsewhere in this release may differ from those previously reported because data for March 2024 through June 2024 have been revised to reflect the availability of late reports and corrections by respondents.

The Producer Price Index for August 2024 is scheduled to be released on Thursday, September 12, 2024, at 8:30 a.m. (ET).

Technical Note

Brief Explanation of Producer Price Indexes

The Producer Price Index (PPI) of the Bureau of Labor Statistics (BLS) is a family of indexes that measures the average change over time in prices received (price changes) by producers for domestically produced goods, services, and construction. PPIs measure price change from the perspective of the seller. This contrasts with other measures, such as the Consumer Price Index (CPI). CPIs measure price change from the purchaser's perspective.

More than 10,000 PPIs for individual products and groups of products are released each month. PPIs are available for the products of virtually every industry in the mining and manufacturing sectors. Over time, new PPIs have been introduced for products of industries in the services and construction sectors of the U.S. economy. As of January 2023, the PPI covered 69 percent of services as measured by 2017 Census revenue, and 17 percent of construction.

More than 64,000 price quotations per month are organized into three sets of PPIs: (1) Final demand-Intermediate demand (FD-ID) indexes, (2) commodity indexes, and (3) indexes for the net output of industries and their products. The FD-ID structure organizes products by class of buyer and degree of fabrication as well as by stage of production. The commodity structure organizes products by similarity of end use or product type. The entire output of various industries is sampled to derive price indexes for the net output of industries and their products.

Final Demand–Intermediate Demand Indexes

The PPI FD-ID structure measures price change for goods, services, and construction sold to final demand and to intermediate demand. The FD-ID system replaced the PPI stage-of-processing (SOP) system as PPI's primary aggregation model with the release of data for January 2014. The FD-ID model expands coverage beyond that of the SOP system through the addition of services, construction, exports, and government purchases.

Compared with finished goods under the SOP system, the PPI for final demand goods includes nearly a 50 percent expansion of coverage. This increase can be traced to the addition of government purchases and exports. For overall final demand, expansion to include final demand services represents an even larger increase in coverage. In December 2022, final demand goods were about 30.7 percent of overall final demand, final demand services were roughly 66.6 percent, and final demand construction was about 2.7 percent of final demand. Within intermediate demand, coverage of services for intermediate demand resulted in about a 45 percent increase in coverage of the intermediate demand portion of the economy.

FD-ID indexes are constructed from commodity-based producer output price indexes. Commodities are allocated to aggregate indexes primarily based on the type of buyer. The main source of data used to determine the type of buyer is the "Use of commodities by industries, before redefinition," table

from the Benchmark Input-Output Accounts of the U.S. In many cases, the same commodity is purchased by different types of buyers. As a result, commodities are often included in several FD-ID indexes. For example, regular gasoline is purchased for personal consumption, export, government use, and business use. The PPI program publishes only one commodity index for regular gasoline (wpu057104), reflecting sales to all types of buyers, and this index is used in all aggregations regardless of whether the gasoline is sold for personal consumption, as an export, to government, or to businesses. Proportions based on BEA "Use of Commodities" data are used to allocate the correct portion of the total weight of gasoline to each use category. In cases when buyer type is an important price determining characteristic, indexes are created based on specific buyer type. For example, within the PPI category for loan services, separate indexes for consumer loans and business loans were constructed. For more information relating to the FD-ID structure, see "A new, experimental system of indexes from the PPI program" in the February 2011 *Monthly Labor Review*.

Final Demand: The final demand portion of the FD-ID structure measures price change for commodities sold for personal consumption, capital investment, government, and export. The system is composed of six main price indexes: final demand goods; final demand trade services; final demand transportation and warehousing services; final demand services less trade, transportation, and warehousing; final demand construction; and overall final demand.

The final demand goods index measures price change for both unprocessed and processed goods sold to final demand. Fresh fruits sold to consumers and computers sold for capital investment are examples of transactions included in the final demand goods price index. The final demand trade services index measures price change for the retailing and wholesaling of merchandise sold to final demand, generally without transformation. (Trade indexes measure changes in margins received by wholesalers and retailers.) The final demand transportation and warehousing services index tracks price change for transportation of passengers, as well as, transportation of cargo sold to final demand, and also includes prices for warehousing and storage of goods sold to final demand. The final demand services less trade, transportation, and warehousing index measures price change for all services other than trade and transportation sold to final demand. Publishing, banking, lodging, and health care are examples of these services. The final demand construction index tracks price change for new construction, as well as maintenance and repair construction sold to final demand. Construction of office buildings is an example of a commodity that would be included in the final demand construction index. Lastly, the overall final demand index tracks price change for all types of commodities sold to final demand by combining the five final demand component indexes described above.

Intermediate Demand: The intermediate demand portion of the FD-ID system tracks price change for goods, services, and construction products sold to businesses as inputs to

production, excluding capital investment. The system includes two parallel treatments of intermediate demand. The first treatment organizes intermediate demand commodities by type. The second organizes intermediate demand commodities into production stages, with the explicit goal of developing a forward-flow model of production and price change.

The intermediate demand by commodity type portion of the system organizes commodities by similarity of product. The system is composed of six main price indexes: unprocessed goods for intermediate demand; processed goods for intermediate demand; intermediate demand trade services; intermediate demand transportation and warehousing services; intermediate demand services less trade, transportation, and warehousing; and intermediate demand construction.

The unprocessed goods for intermediate demand price index measures price change for goods sold to businesses as inputs to production that have undergone no fabrication. Crude petroleum sold to refineries is an example of an unprocessed good sold to intermediate demand. The processed goods for intermediate demand index tracks price change for fabricated goods sold as business inputs. Examples include car parts sold to car manufacturers and gasoline sold to trucking companies. The index for trade services for intermediate demand measures price change for the services of retailing and wholesaling goods purchased by businesses as inputs to production. The intermediate demand transportation and warehousing services index measures price change for business travel, as well as, transportation and warehousing of cargo sold to intermediate demand. The intermediate demand services less trade, transportation, and warehousing index measures price change for services other than trade, transportation, and warehousing sold as inputs to production. Legal and accounting services purchased by businesses are examples of intermediate demand services excluding trade, transportation, and warehousing. Finally, the construction for intermediate demand index measures price change for construction purchased by firms as inputs to production. The index for construction for intermediate demand tracks price change for maintenance and repair construction purchased by firms.

The production flow treatment of intermediate demand is a stage-based system of price indexes. These indexes can be used to study price transmission across stages of production and final demand. This system is constructed in a manner that maximizes forward flow of production between stages, while minimizing back-flow of production. The production flow treatment contains four main indexes: intermediate demand stage 1, intermediate demand stage 2, intermediate demand stage 3, and intermediate demand stage 4.

Indexes for the four stages were developed by first assigning each industry in the economy to one of four stages of production, where industries assigned to the fourth stage primarily produce output consumed as final demand, industries in the third stage primarily produce output consumed by stage 4 industries, industries assigned to the second stage primarily produce output consumed by stage 3 industries, and industries assigned to the first stage produce output primarily consumed by stage 2 industries. The four indexes then track prices for the net inputs consumed by industries in each of the four stages of production. The stage 4

intermediate demand index, for example, tracks price change for inputs consumed, but not produced, by industries included in the fourth stage of production. Hence, the index tracks price change in inputs to industries that primarily produce final demand commodities (stage 4 producers primarily produce commodities sold to final demand).

Examples of heavily weighted goods-producing industries in stage 4 include the manufacture of light trucks and utility vehicles, automobiles, and pharmaceuticals. Retail trade, food service and drinking places, and hospitals are examples of heavily weighted service industries included in stage 4. Stage 4 also includes all new construction industries. Examples of goods consumed by stage 4 industries include motor vehicle parts, commercial electric power, plastic construction products, biological products, and beef and veal. Engineering services, machinery and equipment wholesaling, long distance motor carrying, and legal services constitute examples of services consumed by stage 4 industries.

Examples of highly weighted goods-producing industries included in stage 3 are motor vehicle parts manufacturing, animal (except poultry) slaughtering and processing, and semiconductor manufacturing. Services industries classified in stage 3 include wholesale trade; insurance carriers; architecture, engineering, and related services; and hotels and motels. Examples of goods consumed by stage 3 industries include slaughter steers and heifers, industrial electric power, and hot rolled steel bars, plates, and structural shapes. Services commonly consumed by stage 3 industries include commissions from sales of property and casualty insurance, business loans, temporary help services, and administrative and general management consulting services.

Petroleum refineries; electricity generation, transmission, and distribution; natural gas distribution; cattle ranching and farming; and plastic materials and resin manufacturing are among the goods-based industries assigned to stage 2. Services industries that are heavily weighted in stage 2 include management of companies and enterprises; non-depository credit intermediation; insurance agencies and brokerages; and services to buildings and dwellings. Goods commonly purchased by stage 2 industries include crude oil, natural gas, formula feeds, and primary basic organic chemicals. Services that are heavily weighted in the intermediate demand stage 2 index are legal services, business loans, and cellular phone and other wireless telecommunication.

Goods producing industries in stage 1 include oil and gas extraction, paper mills, and grain farming. Real estate, legal services, and advertising services are examples of highly weighted services industries included in stage 1. Examples of goods consumed by stage 1 industries are commercial and industrial electric power and gasoline. Services commonly consumed by stage 1 industries include solid waste collection, chemicals and allied products wholesaling, and guestroom or unit rental. It should be noted that all inputs purchased by stage 1 industries are by definition produced either within stage 1 or by latter stages of processing, leaving stage 1 less useful for price transmission analysis. For additional information on industry stage assignments, see www.bls.gov/ppi/fd-id/ppi-intermediate-demand-by-production-flow-industry-stage-assignments.htm.

Comparing the PPI with CPI

Although some data users utilize the PPI as a potential indicator of the Consumer Price Index (CPI), there are many reasons why the PPI and the CPI may diverge. The scope of the personal consumption portion of the PPI includes all marketable output sold by domestic producers for households. The scope of the CPI includes goods and services provided by business or government, where explicit user charges are paid by consumers. For example, the most heavily weighted item in the CPI, owners' equivalent rent, is excluded from the PPI. The scope of the CPI includes imports. The PPI excludes imports. The CPI only includes components of personal consumption directly paid for by the consumers, while the PPI includes components of personal consumption that may not be paid for by consumers. For example, the PPI includes medical services paid for by third parties. In contrast to CPI, PPI does not completely cover services. PPIs exclude taxes, since they do not represent producer revenue. Conversely, sales and other taxes paid by consumers are part of household expenditure and are included in the CPI. Additional technical differences between PPI and CPI also exist. For more information see "Comparing new final demand producer price indexes with other Government price indexes," *Monthly Labor Review*, January 2014, at www.bls.gov/opub/mlr/.

Commodity Indexes

The commodity classification of the PPI organizes goods, services, and construction by similarity of product or end use, disregarding industry of origin. With the release of data for July 2009, PPI expanded its commodity structure to include indexes for services and construction products. Prior to this date, the PPI commodity structure only included products from goods producing sectors. Table 9 of the *PPI Detailed Report* includes data for commodity indexes, organized in a hierarchal structure, including major groupings, subgroups, product classes, sub-product classes, and individual items.

Industry Net-Output Price Indexes

PPIs for the net output of industries and their products are grouped according to the North American Industry Classification System (NAICS). Prior to the release of January 2004, industry-based PPIs were published according to the Standard Industrial Classification (SIC) system. Industry price indexes are compatible with other economic time series organized by industry, such as data on employment, wages, and productivity. Table 11 of the *PPI Detailed Report* includes data for NAICS industries and industry groups (3-, 4-, 5-, and 6-digit codes), Census product classes (7- and 8-digit codes), products (9-digit codes), more detailed sub-products (11-digit codes), and, for some industries, indexes for other sources of revenue.

Indexes may represent one of three kinds of product categories. Every industry has primary product indexes that show changes in prices received by establishments classified in the industry for products made primarily, but not necessarily exclusively, by that industry. The industry classification of an establishment is determined by which products make up a plurality of its total shipment value. In

addition, most industries have secondary product indexes that show changes in prices received by establishments for products chiefly made in some other industry. Some industries have miscellaneous receipts indexes that track price changes for other sources of revenue received by establishments within the industry that are not derived from sales of their products; for example, resales of purchased materials, or revenues from parking lots owned by a manufacturing plant.

Data Collection

PPIs are constructed using selling prices reported by establishments of all sizes, selected by probability sampling, with the probability of selection proportionate to size. Individual items and transaction terms also are chosen by probability proportionate to size. BLS strongly encourages cooperating companies to supply actual transaction prices at the time of shipment to minimize the use of list prices. Prices submitted by survey respondents are effective on the Tuesday of the week containing the 13th day of the month. The survey is conducted online via the BLS Internet Data Collection Facility (IDCF). Data provided by survey respondents are supplemented with data from other sources for some areas.

Price data are provided by survey respondents on a voluntary and confidential basis; only sworn BLS employees are allowed access to individual company price reports. BLS publishes price indexes, not actual prices. All PPIs are subject to monthly revisions up to 4 months after original publication to reflect the availability of late reports and corrections by respondents.

BLS periodically updates the PPI sample of survey respondents to better reflect current conditions when the structure, membership, technology, or product mix of an industry shifts significantly and to spread reporting burden among smaller firms. Information on these resampling efforts are noted in the *PPI News Release* and *PPI Detailed Report* in the months they occur.

As part of an ongoing effort to expand coverage to sectors of the economy other than mining and manufacturing, an increasing number of service and construction sector industries have been introduced into the PPI. The following list of industries introduced since the mid-1990s includes the month and year in which an article describing the industry's content appeared in the *PPI Detailed Report*.

Service and construction sector industries introduced into the Producer Price Index, by SIC or NAICS code at their date of introduction and the *PPI Detailed Report* issue that announces their introduction

Title	Code	<i>PPI Detailed Report</i> Issue
	SIC	
Wireless telecommunications	4812	July 1999
Telephone communications, except radio telephone	4813	July 1995
Television broadcasting	4833	July 2002
Grocery stores	5411	July 2000
Meat and fish (seafood) markets	5421	July 2000
Fruit and vegetable markets	5431	July 2000
Candy, nut, and confectionery stores ...	5441	July 2000

Title	Code	PPI Detailed Report Issue
SIC		
Retail bakeries	5461	July 2000
Miscellaneous food stores	5499	July 2000
New car dealers	5511	July 2000
Gasoline service stations	5541	January 2002
Boat dealers	5551	January 2002
Recreational vehicle dealers	5561	January 2002
Miscellaneous retail	59	January 2001
Security brokers, dealers, and investment bankers	6211	January 2001
Investment advice	6282	January 2003
Life insurance carriers	6311	January 1999
Property and casualty insurance	6331	July 1998
Insurance agencies and brokerages	6412	January 2003
Operators and lessors of nonresidential buildings	6512	January 1996
Real estate agents and managers	6531	January 1996
Prepackaged software	7372	January 1998
Data processing services	7374	January 2002
Home health care services	8082	January 1997
Legal services	8111	January 1997
Engineering design, analysis, and consulting services	8711	January 1997
Architectural design, analysis, and consulting services	8712	January 1997
Premiums for property and casualty insurance	9331	July 1998
NAICS		
New Industrial building construction	236211	January 2008
New warehouse building construction	236221	July 2005
New school construction	236222	July 2006
New office construction	236223	January 2007
New health care building construction	236224	January 2013
Concrete contractors, nonresidential building work	23811X	July 2008
Roofing contractors, nonresidential building work	23816X	July 2008
Electrical contractors, nonresidential building work	23821X	July 2008
Plumbing / HVAC contractors, nonresidential building work	23822X	July 2008
Merchant wholesalers, durable goods	423	July 2005
Merchant wholesalers, nondurable goods	424	July 2005
Electronics and appliance stores	443	January 2004
Building material and garden equipment and supplies dealers	444	January 2004
Sporting goods, hobby, book, and music stores	451	January 2004
General merchandise stores	452	January 2004
Miscellaneous store retailers	453	January 2004
Pipeline transportation of natural gas	486210	June 2022
Internet service providers	518111	July 2005
Internet publishing and web search portals	519130	January 2010
Commercial banking	522110	January 2005
Savings institutions	522120	January 2005
Direct health and medical insurance carriers	524114	July 2004

Title	Code	PPI Detailed Report Issue
NAICS		
Construction, mining, and forestry machinery and equipment rental and leasing	532412	January 2005
Management consulting services	541610	January 2007
Security guards and patrol services	561612	July 2005
Offices of dentists	621210	January 2011
Blood and organ banks	621991	January 2007
Amusement and theme parks	713110	July 2006
Golf courses and country clubs	713910	July 2006
Fitness and recreational sports centers	713940	July 2005
Commercial machinery repair and maintenance	811310	July 2007

Weights

Weights for most commodity groupings of the PPI, as well as, weights for commodity-based aggregate indexes calculated from commodity groupings, such as FD-ID indexes, currently reflect 2017 values of shipments as reported in the *Census of Manufactures* and other sources. From January 2018 to December 2022, PPI weights were derived from 2012 shipment values. Industry indexes now are calculated under the 2022 NAICS structure utilizing 2017 value of shipment weights and 2012 net output ratios. The periodic update of the value weights used to calculate the PPI is done to more accurately reflect changes in production and marketing patterns in the economy.

Net output values of shipments are used as weights for industry indexes. Net output values refer to the value of shipments from establishments within the industry to buyers outside the industry. However, weights for commodity indexes are based on gross shipment values, including values of shipments between establishments within the same industry. As a result, broad commodity grouping indexes, such as the PPI for All Commodities (which is composed of major commodity groupings 01 through 15), are affected by the multiple counting of price change at successive stages of processing, which can lead to exaggerated or misleading signals about inflation. The intermediate demand by commodity type FD-ID indexes partially correct for this defect, but industry indexes, final demand FD-ID indexes, and intermediate demand by production flow FD-ID indexes consistently correct for this at all levels of aggregation. Therefore, industry and FD-ID indexes are more appropriate than broad commodity groupings for analysis of general price trends.

Price Index Reference Base

Effective with publication of January 1988 data, many important PPI series (including most commodity groups and individual items) were placed on a new reference base, 1982 = 100. From 1971 through 1987, the standard reference base for most PPI series was 1967 = 100. Except for rounding differences, the shift to the new reference base did not alter any previously published percent changes for affected PPI series. (See “Calculating Index Changes,” below.) The 1982

reference base is not used for commodity indexes with a base later than December 1981 or for industry net output indexes and their products. The FD-ID indexes typically have a reference base of November 2009 = 100.

For further information on the underlying concepts and methodology of the Producer Price Index, see chapter 14, “Producer Prices,” in the *BLS Handbook of Methods*. This chapter can be downloaded from the BLS Web site at www.bls.gov/opub/hom/homch14.htm.

Calculating Index Changes

Each PPI measures price changes from a reference period that equals 100.0. An increase of 5.5 percent from the reference period in the Final Demand Goods Price Index, for example, is shown as 105.5. This change also can be expressed in dollars, as follows: prices received by domestic producers of a sample of final demand goods have risen from \$100 in November 2009 to \$105.50. Likewise, a current index of 90.0 would indicate that prices received by producers of final demand goods are 10 percent lower than they were in November 2009.

Movements of price indexes from one month to another are usually expressed as percent changes, rather than as changes in index points. Index point changes are affected by the level of the index in relation to its base period, whereas percent changes are not. The following example shows the computation of index point and percent changes.

Index point change

Final Demand Goods Price Index	107.5
Less previous index	104.0
Equals index point change	3.5

Index percent change

Index point change	3.5
Divided by the previous index	104.0
Equals	0.034
Result multiplied by 100	0.034 x 100
Equals percent change	3.4

Seasonally Adjusted and Unadjusted Data

Because price data are used for different purposes by different groups, BLS publishes seasonally adjusted and unadjusted changes each month. Seasonally adjusted data are preferred for analyzing general price trends in the economy because these data eliminate the effect of changes that normally occur at about the same time, and in about the same magnitude, every year—such as price movements resulting from normal weather patterns, regular production and marketing cycles, model changeovers, seasonal discounts, and holidays. For these reasons, seasonally adjusted data more clearly reveal underlying trends. Unadjusted data are of primary interest to users who need information that can be related to actual dollar values of transactions. Individuals requiring this information include marketing specialists, purchasing agents, budget and cost analysts, contract specialists, and commodity traders. It is the unadjusted data

that are generally cited when escalating long-term contracts such as purchasing agreements or real estate leases. For more information, see *Price Adjustment Guide for Contracting Parties*, on the Web at: www.bls.gov/ppi/publications/price-adjustment-guide-for-contracting-parties.htm.

Seasonal adjustment is accomplished using X-13 ARIMA, a software package published by the U.S. Census Bureau. Each year, the seasonal status of most commodity indexes is reevaluated to reflect more recent price behavior. Industry net output indexes are not seasonally adjusted. For time series that exhibit seasonal pricing patterns, new seasonal factors are estimated and applied to the unadjusted data from the prior 5 years. Updated seasonally adjusted indexes replace the most recent 5 years of seasonal data.

Seasonal factors may be applied to series using either a direct or an aggregative method. Generally, commodity indexes are seasonally adjusted using direct seasonal adjustment, which produces a more complete elimination of seasonal movements than does the aggregative method. However, the direct seasonal adjustment process may not yield figures that possess additive consistency. Thus, a seasonally adjusted index for a broad category that is directly adjusted may not be logically consistent with all seasonally adjusted indexes for its components. Seasonal movements for FD-ID indexes are derived indirectly through an aggregative method that combines movements of a wide variety of subproduct class (six-digit) series.

Seasonally adjusted indexes can become problematic when previously stable and predictable price patterns abruptly change. If the new pattern persists, the seasonal adjustment method will eventually reflect it; if the pattern keeps shifting, however, seasonally adjusted data will become chronically troublesome. This problem occurs relatively infrequently for farm and food-related products, but has more often affected manufactured products such as automobiles and steel.

Since January 1988, the PPI has used Intervention Analysis Seasonal Adjustment methods to enhance the calculation of seasonal factors. With this technique, outlier values that may distort the seasonal pattern are removed from the data prior to applying the standard seasonal factor estimation procedure. For example, a possible economic cause for large price movements for petroleum-based products might have been the COVID-19 pandemic. In this case, intervention techniques allowed for better estimates of seasonally adjusted data. On the whole, very few series have required intervention. Out of over 400 seasonally adjusted commodity series, 69 were subject to intervention in 2023.

For more information relating to seasonal adjustment methods, see “PPI and CPI Seasonal Adjustment: an Update” in the July 2010 *Monthly Labor Review*, and “PPI and CPI Seasonal Adjustment During the COVID-19 Pandemic” in the May 2022 *Monthly Labor Review*.

Producer Price Index Data on the Internet

In 1995, the BLS began posting PPI series, news releases, and technical information to the internet. There were more than 13 million instances of PPI data being downloaded from the BLS website during 2022.

Retrieving PPI data from the PPI Web site

PPI data can be obtained online (www.bls.gov/ppi). On this page, under the tab labeled “Featured PPI databases” links provide the following methods of data retrieval:

- **Top Picks** is a form-based application for both Industry Data and Commodity Data that allows the user to quickly obtain PPI time series data by selecting the high-level aggregate and other commonly requested time series, including the All Commodities Index and the FD-ID indexes (for example, Final Demand). Within each list, any one—or all—of the time series shown can be selected. A user can modify the date range and output options after executing the query, using the reformat button above the data output table.
- **One-Screen Data Search and Multi-Screen Data Search** are form-based query applications for both Industry Data and Commodity Data designed for users unfamiliar with the PPI coding structure. These applications guide a user through the PPI classification by listing index titles and do not require knowledge of commodity or industry codes. Data retrieved are based on a query formulated by selecting data characteristics from lists provided. Two options are available to create customized tables, depending on a user’s browser capability. The one-screen option is a JavaScript application that uses a single screen to guide a user through the available time series data. The second option is a multiple-screen, non-Java-based application. Both methods allow a user to browse the PPI coding structure and select multiple series. Users can modify the date range and output options after executing the query using the reformat button above the data output table.
- **Series Report** is a form-based application that allows users to input multiple, formatted PPI time series identifiers (commodity or industry codes) as inputs in extracting data according to a specified set of date ranges and output options. This application provides the most efficient path for users who are familiar with the format of PPI time series identifiers. There are five alphabetic prefixes used to create unique PPI time series identifiers: WP, WD, PC, PD, and ND. Each provides the user access to a different PPI database. Adding either a “u” (not seasonally adjusted) or an “s” (seasonally adjusted) to the end of these prefixes further specifies the type of data needed.

EXAMPLES

For commodity and FD-ID indexes, series identifiers combine a “wpu” prefix (not seasonally adjusted) or a “wps” prefix (seasonally adjusted) with a commodity code.

<u>Commodity code</u>	<u>Provides data for:</u>
wps141101	Passenger cars, seasonally adjusted
wpu141101	Passenger cars, not seasonally adjusted
wpufd4	Final demand, not seasonally adjusted
wpsid63	Services for intermediate demand, seasonally adjusted

For discontinued commodity indexes, series identifiers combine a “wdu” prefix (not seasonally adjusted) or a “wds” prefix (seasonally adjusted) with a commodity code.

<u>Commodity code</u>	<u>Provides data for:</u>
wds019	Other farm products, seasonally adjusted
wdu0635	Preparations, ethical (prescription), not seasonally adjusted
wdusi138011	Stainless steel mill products, not seasonally adjusted

Current price indexes grouped by industry according to NAICS have series identifiers that begin with the prefix “pcu.” After the prefix, there are 12 digits (the 6-digit industry code is listed twice) followed by up to 7 alphanumeric characters identifying product detail. Dashes are used as placeholders for higher-level industry group codes.

<u>Industry-product code, current NAICS series</u>	<u>Provides data for:</u>
pcu325---325---	Chemical manufacturing
pcu336110336110	Automobile and light duty motor vehicle manufacturing
pcu621111621111411	Offices of physicians, one- and two-physician practices and single-specialty group practices, general/family practice

Discontinued industry-product codes based on SIC combine a “pdu” prefix and “#” between the fourth and fifth characters of the product code. Series identifiers for the discontinued dataset use underscores as placeholders to complete a reference to an SIC industry group code of fewer than four digits. (All PPI industry-based indexes organized by SIC were discontinued with the introduction of NAICS in 2004.)

<u>Industry-product code, discontinued SIC series</u>	<u>Provides data for:</u>
pdu28_#	Chemicals and allied products
pdu331_#	Blast furnaces, steel works, and rolling and finishing mills
pdu3711#111	Passenger cars

Price indexes for discontinued series grouped by industry according to NAICS have identifiers that begin with the prefix “ndu”. After the prefix, there are 12 numeric digits (the 6-digit industry code is listed twice), and up to 7 additional alphanumeric characters that identify product detail. Dashes are used as placeholders for higher-level group codes.

*Industry-product code,
discontinued NAICS series*
ndu212231212231
ndu2122312122312
ndu212231212231214

Provides data for
Lead and zinc ore mining
Lead, zinc concentrates
Lead concentrates

- **Text Files** are best suited for users requiring access to either a large volume of time series data or other PPI-related documentation, such as seasonal factor tables and relative importance tables. The text files can be accessed at download.bls.gov/ or directly from links on the “PPI Databases” page or the PPI homepage. Data and documentation available for download include the following:

Industry Data	<u>Directory:</u> /pub/time.series/pc
Industry Data - Discontinued (NAICS basis)	/pub/time.series/nd
(SIC basis)	/pub/time.series/pd
Commodity Data (incl. FD-ID)	/pub/time.series/wp
Commodity Data – Discontinued	/pub/time.series/wd
Special requests	/pub/special.requests/ppi

Additional information

The PPI homepage (www.bls.gov/ppi) contains additional information regarding PPI data and methodology. The “PPI Publications” section of the homepage provides PPI news releases, both current and archived, as well as general PPI information. The “PPI Tables” section provides relative importance and seasonal factor tables. The remaining sections offer special notices and publications pertaining to PPI methodology and applications.

For questions or comments regarding PPI data classification, methodology, or data availability on the Internet, call or e-mail the Section of Index Analysis and Public Information at (202) 691-7705 or ppi-info@bls.gov. If you are deaf, hard of hearing, or have a speech disability, please dial 7-1-1 to access telecommunications relay services.

Table 1. Producer price index percentage changes and weights for Final Demand-Intermediate Demand groupings, seasonally adjusted [July 2024]

Grouping	Commodity code		Relative Importance Dec. 2023 ¹	Unadjusted 12-month percent change ² July 2023 to July 2024 ^P	Seasonally adjusted 1-month percent change ²				
	Group code	Item code			Feb. to Mar.	Mar. to Apr. ^P	Apr. to May ^P	May to June ^P	June to July ^P
Final Demand									
Final demand.....	FD	4	100.000	2.2	0.0	0.5	0.0	0.2	0.1
Final demand goods.....	FD	41	30.162	1.7	-0.2	0.4	-0.8	-0.4	0.6
Final demand foods.....	FD	411	5.633	1.7	0.3	-0.7	-0.1	0.1	0.6
Finished consumer foods ³	FD	4111	4.307	3.4	0.2	-0.7	-0.5	0.4	0.6
Finished consumer foods, crude.....	FD	41113	0.351	2.3	-4.0	-4.4	-7.5	4.7	-2.5
Finished consumer foods, processed.....	FD	41112	3.956	3.5	0.7	-0.4	0.2	0.0	0.9
Government purchased foods.....	FD	4112	0.410	4.9	0.6	-0.7	0.0	0.5	1.8
Foods for export.....	FD	4113	0.916	-7.2	0.7	-0.9	1.5	-1.3	0.1
Final demand energy.....	FD	412	5.517	0.3	-1.2	1.8	-4.6	-2.1	1.9
Finished consumer energy goods ³	FD	4121	4.292	-0.6	-1.1	1.9	-3.9	-2.3	1.3
Government purchased energy.....	FD	4122	0.834	3.0	-1.2	1.3	-8.3	-1.9	4.2
Energy for export.....	FD	4123	0.391	5.6	-3.1	1.7	-5.2	-1.3	4.3
Final demand goods less foods and energy.....	FD	413	19.012	2.1	0.0	0.3	0.2	0.0	0.2
Finished goods less foods and energy ³	FD	4131	10.933	2.2	0.2	0.1	0.2	0.1	0.1
Finished consumer goods less foods and energy.....	FD	41311	5.811	1.9	0.1	0.1	0.3	0.0	0.1
Nondurable consumer goods less foods and energy.....	FD	413111	3.522	2.4	0.0	0.2	0.5	0.0	0.1
Durable consumer goods.....	FD	413112	2.289	1.2	0.2	0.1	0.0	0.0	0.1
Private capital equipment.....	FD	41312	5.122	2.5	0.3	0.1	0.1	0.1	0.2
Private capital equipment for manufacturing industries.....	FD	413121	1.254	3.4	0.6	0.1	0.3	0.1	0.2
Private capital equipment for nonmanufacturing industries.....	FD	413122	3.868	2.2	0.3	0.1	0.1	0.1	0.1
Government purchased goods, excluding foods and energy.....	FD	4132	1.971	2.7	0.3	0.3	0.0	0.0	0.3
Government purchased goods excluding foods, energy, and capital equipment.....	FD	41321	1.146	1.6	0.3	0.3	-0.1	-0.1	0.4
Government purchased capital equipment.....	FD	41322	0.825	4.2	0.2	0.2	0.1	0.2	0.2
Goods for export, excluding foods and energy.....	FD	4133	6.108	1.7	-0.3	0.5	0.3	0.0	0.4
Final demand services.....	FD	42	67.184	2.6	0.1	0.6	0.4	0.4	-0.2
Final demand trade services ⁴	FD	423	19.195	-0.7	-0.4	0.5	0.7	1.4	-1.3
Trade of finished goods ³	FD	4231	16.558	-1.0	-0.4	0.3	1.0	1.4	-1.4
Trade of personal consumption goods.....	FD	42311	13.605	-0.7	-0.4	-0.4	1.7	0.9	-1.2
Trade of private capital equipment.....	FD	42312	2.953	-2.1	-0.5	3.8	-2.3	3.3	-2.3
Trade of government purchased goods.....	FD	4232	0.745	0.9	-0.1	1.9	-0.7	2.0	-1.3
Trade of government purchased goods, excluding capital equipment.....	FD	42321	0.474	1.3	0.1	0.0	1.0	0.5	-0.3
Trade of government purchased capital equipment.....	FD	42322	0.271	0.3	-0.3	4.9	-3.5	4.5	-3.1
Trade of exports.....	FD	4233	1.892	1.3	-0.2	1.6	-0.7	1.2	-0.7
Final demand transportation and warehousing services.....	FD	422	4.931	0.6	0.2	-0.5	-0.8	-0.1	0.4
Transportation of passengers for final demand.....	FD	4221	1.271	-3.8	1.7	-3.6	-3.9	0.4	-0.2
Transportation of private passengers.....	FD	42211	0.857	-3.7	1.7	-3.6	-3.9	0.4	-0.2
Transportation of government passengers.....	FD	42212	0.103	-3.7	1.7	-3.5	-3.9	0.4	-0.2
Transportation of passengers for export.....	FD	42213	0.311	-3.8	1.8	-3.6	-3.9	0.4	-0.2
Transportation and warehousing of goods for final demand.....	FD	4222	3.660	2.2	-0.3	0.6	0.2	-0.2	0.5
Transportation and warehousing of finished goods ³	FD	42221	2.368	2.0	-0.4	0.6	0.2	-0.2	0.6
Transportation and warehousing of personal consumption goods.....	FD	422211	1.908	2.0	-0.4	0.6	0.2	-0.2	0.5
Transportation and warehousing of private capital equipment.....	FD	422212	0.460	1.8	-0.4	0.6	0.2	-0.2	0.6
Transportation and warehousing of government purchased goods.....	FD	42222	0.220	1.9	-0.2	0.7	0.1	-0.4	0.3
Transportation and warehousing of exports.....	FD	42223	1.072	2.7	-0.3	0.6	0.3	-0.2	0.6
Final demand services less trade, transportation, and warehousing.....	FD	421	43.059	4.3	0.3	0.7	0.4	0.1	0.3
Finished services less trade, transportation, and warehousing ³	FD	4211	37.528	4.1	0.3	0.7	0.4	0.0	0.3
Finished consumer services less trade, transportation, and warehousing.....	FD	42111	33.067	4.3	0.3	0.6	0.4	0.0	0.3
Private capital investment services less trade, transportation, and warehousing.....	FD	42112	4.461	3.2	0.0	1.0	0.5	0.1	0.3
Government purchased services less trade, transportation, and warehousing.....	FD	4212	2.810	4.3	0.2	0.8	0.3	0.1	0.5
Gov. purchased services less trade, transportation, and warehousing, excl. capital investment.....	FD	42121	2.647	4.4	0.2	0.8	0.3	0.1	0.5
Government purchased capital investment services less trade, transportation, and warehousing.....	FD	42122	0.163	2.8	0.4	1.0	0.9	-0.4	0.4
Services for export less trade, transportation, and warehousing.....	FD	4213	2.721	6.0	0.9	1.0	0.4	0.3	0.5
Final demand construction.....	FD	43	2.654	1.4	0.1	0.1	0.0	0.4	0.8
Construction for private capital investment.....	FD	431	1.844	1.2	0.1	0.0	0.0	0.4	0.7
Construction for government.....	FD	432	0.810	1.9	0.1	0.4	-0.1	0.3	1.0
Special Groupings of Final Demand									
Final demand less exports.....	FD	49101	86.589	2.3	0.0	0.5	0.0	0.2	0.1
Final demand less government.....	FD	49102	92.097	2.2	0.0	0.5	0.1	0.2	0.0

See footnotes at end of table.

Table 1. Producer price index percentage changes and weights for Final Demand-Intermediate Demand groupings, seasonally adjusted — Continued
 [July 2024]

Grouping	Commodity code		Relative Importance Dec. 2023 ¹	Unadjusted 12-month percent change ² July 2023 to July 2024 ^P	Seasonally adjusted 1-month percent change ²				
	Group code	Item code			Feb. to Mar.	Mar. to Apr. ^P	Apr. to May ^P	May to June ^P	June to July ^P
Final demand less foods, food and nonalcoholic beverages for immediate consumption, and energy ⁵	FD	49103	88.421	2.4	0.1	0.5	0.3	0.4	-0.1
Final demand less foods and energy ⁵	FD	49104	88.850	2.4	0.1	0.5	0.3	0.3	0.0
Final demand less foods and food and nonalcoholic beverages for immediate consumption ⁵	FD	49105	93.938	2.2	0.0	0.5	0.0	0.2	0.1
Final demand less foods ⁵	FD	49106	94.367	2.3	0.0	0.6	0.0	0.2	0.1
Final demand less energy.....	FD	49107	94.483	2.4	0.1	0.4	0.3	0.3	0.0
Final demand less trade services.....	FD	49108	80.805	3.0	0.1	0.5	-0.2	-0.1	0.4
Final demand less distributive services ⁶	FD	49109	77.145	3.0	0.1	0.5	-0.2	-0.1	0.4
Final demand goods less energy.....	FD	49111	24.645	2.0	0.1	0.0	0.1	0.1	0.3
Final demand goods less foods.....	FD	49112	24.529	1.6	-0.3	0.6	-0.9	-0.5	0.6
Final demand services less trade services.....	FD	49113	47.990	3.9	0.3	0.6	0.2	0.0	0.3
Final demand distributive services ⁶	FD	49114	22.855	-0.2	-0.4	0.5	0.6	1.1	-1.0
Final demand goods plus final demand distributive services ⁶	FD	49115	53.017	0.8	-0.3	0.4	-0.2	0.3	-0.1
Final demand less foods, energy, and trade services ⁵	FD	49116	69.655	3.3	0.2	0.5	0.2	0.1	0.3
Private and government purchased capital equipment.....	FD	49117	5.947	2.7	0.3	0.1	0.1	0.1	0.2
Private and government purchased capital investment services.....	FD	49118	8.308	1.0	-0.2	2.1	-0.7	1.4	-0.8
Total private and government purchased capital investment.....	FD	49119	14.255	1.7	0.0	1.1	-0.3	0.8	-0.2
Total finished ³	FD	49201	78.687	2.2	0.0	0.5	0.1	0.2	0.0
Total finished less foods, food and nonalcoholic beverages for immediate consumption, and energy ^{3, 5}	FD	49202	69.663	2.3	0.1	0.4	0.4	0.4	-0.1
Total finished less foods and energy ^{3, 5}	FD	49203	70.088	2.3	0.1	0.4	0.4	0.4	-0.1
Total finished less foods and food and nonalcoholic beverages for immediate consumption ^{3, 5}	FD	49204	73.955	2.1	0.0	0.5	0.2	0.2	0.0
Total finished less foods ^{3, 5}	FD	49205	74.380	2.2	0.0	0.5	0.1	0.2	0.0
Total finished less energy ³	FD	49206	74.395	2.4	0.1	0.4	0.4	0.4	-0.1
Finished goods ³	FD	49207	19.532	1.8	-0.1	0.3	-0.9	-0.4	0.5
Finished goods less energy ³	FD	49208	15.240	2.5	0.2	-0.1	0.0	0.2	0.3
Finished goods, excluding foods ^{3, 5}	FD	49209	15.225	1.3	-0.2	0.7	-1.0	-0.6	0.5
Finished services ³	FD	49210	57.311	2.4	0.1	0.5	0.5	0.4	-0.2
Private capital investment services.....	FD	49211	7.874	1.0	-0.2	2.1	-0.6	1.3	-0.7
Finished distributive services ^{3, 6}	FD	49212	18.926	-0.6	-0.4	0.4	0.9	1.2	-1.1
Finished services less trade services ³	FD	49213	40.753	3.8	0.3	0.6	0.3	0.0	0.3
Finished services less distributive services ^{3, 6}	FD	49214	38.385	4.0	0.3	0.6	0.3	0.1	0.3
Total private capital investment (goods, services, and construction).....	FD	49215	14.840	1.5	0.0	1.1	-0.3	0.8	-0.2
Finished goods plus finished distributive services ^{3, 6}	FD	49216	38.458	0.6	-0.2	0.4	0.0	0.4	-0.3
Total exports.....	FD	49301	13.411	1.9	0.0	0.6	0.0	0.1	0.3
Goods for export.....	FD	49302	7.415	0.8	-0.4	0.4	0.2	-0.3	0.6
Services for export.....	FD	49303	5.996	3.4	0.4	0.9	-0.2	0.5	0.1
Total government purchases.....	FD	49401	7.903	3.0	0.0	0.7	-0.9	0.1	0.7
Government purchased goods.....	FD	49402	3.215	3.0	-0.1	0.4	-2.3	-0.4	1.5
Government purchased services.....	FD	49403	3.878	3.3	0.2	0.9	0.0	0.4	0.1
Total government purchased capital investment (goods, services, construction).....	FD	49404	2.069	2.6	0.1	1.0	-0.4	0.8	0.1
Government purchases, defense.....	FD	49405	2.356	3.2	-0.2	0.6	-1.1	0.0	0.7
Government purchases, non-defense.....	FD	49406	5.547	3.0	0.2	0.7	-0.9	0.1	0.8
Personal consumption.....	FD	49501	63.847	2.4	0.0	0.3	0.2	0.1	0.0
Personal consumption goods (finished consumer goods).....	FD	49502	14.410	1.5	-0.2	0.4	-1.3	-0.6	0.6
Personal consumption goods less energy.....	FD	49503	10.118	2.5	0.1	-0.2	0.0	0.2	0.3
Personal consumption goods less foods.....	FD	49504	10.103	0.7	-0.4	0.9	-1.6	-1.0	0.6
Personal consumption nondurable goods less foods.....	FD	49508	7.814	0.6	-0.6	1.1	-2.0	-1.2	0.8
Personal consumption services.....	FD	49505	49.437	2.6	0.1	0.3	0.6	0.3	-0.1
Personal consumption less trade services.....	FD	49506	50.242	3.2	0.1	0.5	-0.2	-0.1	0.4
Personal consumption less distributive services ⁶	FD	49507	48.334	3.3	0.2	0.5	-0.2	-0.1	0.4
Personal consumption less foods and energy.....	FD	49510	55.248	2.6	0.1	0.3	0.6	0.2	-0.1
Personal consumption less foods, energy, and trade services ⁴	FD	49511	41.643	3.7	0.3	0.5	0.3	0.0	0.2
Personal consumption less foods, energy, and distributive services ⁶	FD	49512	39.735	3.7	0.3	0.5	0.3	0.0	0.2
Personal consumption goods plus personal consumption distributive services ⁶	FD	49509	29.923	0.5	-0.3	0.1	0.2	0.1	-0.2
Intermediate Demand by Commodity Type									
Processed goods									
Processed goods for intermediate demand.....	ID6	1	100.000	0.8	-0.6	0.6	-1.4	-0.2	0.7
Materials and components for manufacturing.....	ID6	11	43.169	0.6	-0.6	0.2	0.1	0.0	0.3
Materials for manufacturing.....	ID6	111	26.499	0.0	-1.0	0.3	0.0	0.0	0.4
Materials for food manufacturing.....	ID6	1111	4.375	5.6	0.8	0.1	0.1	0.8	1.5
Materials for nondurable manufacturing.....	ID6	1112	11.774	1.2	0.2	0.8	-0.6	-0.1	1.3
Materials for durable manufacturing.....	ID6	1113	10.350	-3.6	-2.9	-0.2	0.7	-0.2	-1.1
Components for manufacturing.....	ID6	112	16.670	1.5	-0.1	0.1	0.1	0.1	0.1

See footnotes at end of table.

Table 1. Producer price index percentage changes and weights for Final Demand-Intermediate Demand groupings, seasonally adjusted — Continued
[July 2024]

Grouping	Commodity code		Relative Importance Dec. 2023 ¹	Unadjusted 12-month percent change ² July 2023 to July 2024 ^P	Seasonally adjusted 1-month percent change ²				
	Group code	Item code			Feb. to Mar.	Mar. to Apr. ^P	Apr. to May ^P	May to June ^P	June to July ^P
Components for nondurable manufacturing.....	ID6	1121	0.804	0.9	0.1	0.4	0.3	0.0	0.0
Components for durable manufacturing.....	ID6	1122	15.866	1.6	-0.1	0.1	0.1	0.1	0.1
Materials and components for construction.....	ID6	12	10.782	0.9	-0.4	0.3	0.0	-0.2	0.0
Materials for construction.....	ID6	121	4.753	1.4	0.5	0.4	-0.4	-0.1	-0.1
Components for construction.....	ID6	122	6.029	0.5	-1.2	0.2	0.2	-0.2	0.0
Processed fuels and lubricants for intermediate demand.....	ID6	13	18.656	1.9	-1.0	1.8	-7.5	-0.9	2.8
Processed fuels and lubricants to manufacturing industries.....	ID6	131	4.711	1.1	-1.1	1.6	-5.4	0.4	1.0
Processed fuels and lubricants to nonmanufacturing industries.....	ID6	132	13.945	2.2	-1.0	1.9	-8.2	-1.4	3.4
Containers for intermediate demand.....	ID6	14	3.090	0.1	-0.2	0.4	0.5	0.2	0.7
Supplies for intermediate demand.....	ID6	15	24.303	0.3	-0.2	0.2	0.2	0.1	0.3
Supplies to manufacturing industries.....	ID6	151	3.234	1.6	0.3	0.4	0.4	0.2	0.0
Supplies to nonmanufacturing industries.....	ID6	152	21.069	0.1	-0.2	0.2	0.1	0.1	0.3
Supplies to nonmanufacturing industries, feeds.....	ID6	1521	2.208	-9.5	-1.7	-0.9	0.1	1.1	0.8
Supplies to nonmanufacturing industries, other than feeds.....	ID6	1522	18.861	1.3	-0.1	0.3	0.1	0.0	0.3
Unprocessed goods									
Unprocessed goods for intermediate demand.....	ID6	2	100.000	3.2	-1.4	2.1	0.1	0.8	3.6
Unprocessed foodstuffs and feedstuffs.....	ID6	21	37.665	0.3	1.6	-0.6	2.8	-1.2	2.9
Unprocessed nonfood materials.....	ID6	22	62.334	5.0	-3.3	3.8	-1.6	2.1	4.0
Unprocessed nonfood materials except fuel.....	ID6	221	51.132	5.7	1.1	4.8	-3.2	-0.2	3.2
Unprocessed nonfood materials except fuel to manufacturing industries.....	ID6	2211	48.525	5.6	1.1	5.0	-3.4	-0.3	3.4
Unprocessed nonfood materials except fuel to nonmanufacturing industries.....	ID6	2212	2.607	7.1	0.4	0.4	0.0	0.1	0.4
Unprocessed fuel.....	ID6	222	11.202	2.5	-25.2	-3.0	10.3	17.9	8.6
Unprocessed fuel to manufacturing industries.....	ID6	2221	1.016	6.9	-7.9	-1.1	2.9	4.7	1.9
Unprocessed fuel to nonmanufacturing industries.....	ID6	2222	10.186	2.2	-27.2	-3.3	11.3	19.8	9.4
Services									
Services for intermediate demand.....	ID6	3	100.000	3.3	0.2	0.3	0.3	0.2	0.3
Trade services for intermediate demand ⁶	ID6	33	18.284	1.4	0.1	-0.4	0.6	0.0	0.1
Trade services for manufacturing industries.....	ID6	331	9.046	1.3	0.2	-0.4	0.3	-0.5	0.5
Trade services for nonmanufacturing industries.....	ID6	332	9.238	1.5	0.0	-0.4	1.0	0.6	-0.3
Transportation and warehousing services for intermediate demand.....	ID6	32	14.025	3.2	0.0	0.5	0.6	-0.3	0.1
Transportation of passengers for intermediate demand.....	ID6	321	1.039	-3.7	1.7	-3.5	-3.9	0.4	-0.2
Transportation of passengers for manufacturing industries.....	ID6	3211	0.124	-3.8	1.8	-3.6	-3.9	0.4	-0.2
Transportation of passengers for nonmanufacturing industries.....	ID6	3212	0.915	-3.7	1.7	-3.5	-3.9	0.4	-0.1
Transportation and warehousing of goods for intermediate demand.....	ID6	322	12.986	3.8	-0.2	0.8	0.9	-0.3	0.1
Transportation and warehousing of goods for manufacturing industries.....	ID6	3221	2.724	2.2	-0.2	0.9	0.2	-0.1	0.3
Transportation and warehousing of goods for nonmanufacturing industries.....	ID6	3222	10.262	4.2	-0.1	0.8	1.1	-0.4	0.1
Services less trade, transportation, and warehousing for intermediate demand.....	ID6	31	67.691	3.9	0.3	0.4	0.1	0.3	0.3
Services less trade, transportation, and warehousing for manufacturing industries.....	ID6	311	2.126	4.4	0.2	0.5	0.2	0.2	0.1
Services less trade, transportation, and warehousing for nonmanufacturing industries.....	ID6	312	65.565	3.9	0.3	0.4	0.1	0.3	0.3
Construction									
Construction for intermediate demand.....	ID6	4	100.000	4.3	0.6	2.9	0.0	0.1	0.1
Special Groupings of Intermediate Demand by Commodity Type									
Processed materials less foods and feeds.....	ID6	9111	91.107	0.7	-0.6	0.6	-1.6	-0.2	0.7
Processed foods and feeds.....	ID6	9112	8.893	1.4	0.2	-0.2	0.2	0.7	1.3
Processed energy goods.....	ID6	9113	18.656	1.9	-1.0	1.8	-7.5	-0.9	2.8
Processed materials less energy.....	ID6	9118	81.344	0.5	-0.4	0.2	0.1	0.0	0.3
Processed materials less foods and energy.....	ID6	9115	72.451	0.4	-0.5	0.3	0.1	-0.1	0.1
Intermediate distributive services ⁷	ID6	9116	31.270	2.4	0.0	0.1	0.8	-0.1	0.1
Processed goods plus intermediate distributive services.....	ID6	9117	-	1.3	-0.4	0.4	-0.8	-0.1	0.5
Unprocessed materials less agricultural products.....	ID6	9211	57.180	8.0	-3.8	4.6	-2.0	2.2	4.7
Unprocessed energy materials ⁸	ID6	9212	37.534	8.3	-5.4	6.0	-3.9	3.8	6.2
Unprocessed materials less energy.....	ID6	9213	62.466	0.3	1.2	-0.2	2.4	-0.9	2.0
Unprocessed nonfood materials less energy ⁹	ID6	9216	24.801	0.4	0.5	0.5	1.9	-0.5	0.7
Intermediate Demand by Production Flow									
Stage 4 Intermediate Demand									
Stage 4 intermediate demand.....	ID5	4	100.000	2.4	0.1	0.4	-0.1	0.0	0.4
Inputs to stage 4 goods producers.....	ID5	41	29.667	0.5	-0.2	0.2	0.3	-0.3	0.3
Goods.....	ID5	411	21.624	-0.3	-0.3	0.1	0.3	-0.1	0.1

See footnotes at end of table.

Table 1. Producer price index percentage changes and weights for Final Demand-Intermediate Demand groupings, seasonally adjusted — Continued
 [July 2024]

Grouping	Commodity code		Relative Importance Dec. 2023 ¹	Unadjusted 12-month percent change ² July 2023 to July 2024 ^P	Seasonally adjusted 1-month percent change ²				
	Group code	Item code			Feb. to Mar.	Mar. to Apr. ^P	Apr. to May ^P	May to June ^P	June to July ^P
Foods.....	ID5	4111	2.954	-3.9	0.2	0.0	0.9	-0.2	0.5
Energy.....	ID5	4112	0.170	-8.2	-7.2	2.6	-0.8	-1.1	-0.1
Goods excluding foods and energy.....	ID5	4113	18.500	0.3	-0.4	0.1	0.3	-0.1	0.1
Services.....	ID5	412	8.043	2.8	0.1	0.3	0.1	-0.8	0.6
Trade services.....	ID5	4123	6.035	2.6	0.0	0.2	0.1	-1.1	0.8
Transportation and warehousing services.....	ID5	4122	0.492	1.8	0.2	0.1	-0.5	0.0	0.3
Transportation of passengers.....	ID5	41221	0.076	-3.8	1.8	-3.6	-3.9	0.4	-0.2
Transportation and warehousing of goods.....	ID5	41222	0.416	2.9	-0.1	0.8	0.1	-0.1	0.4
Services less trade, transportation, and warehousing.....	ID5	4121	1.516	3.8	0.2	0.8	0.3	0.2	0.1
Inputs to stage 4 services producers.....	ID5	42	55.647	3.8	0.4	0.5	-0.2	0.2	0.5
Goods.....	ID5	421	13.690	1.8	0.1	0.7	-1.0	0.0	0.4
Foods.....	ID5	4211	2.275	3.0	1.0	0.0	0.3	-0.5	1.5
Energy.....	ID5	4212	4.008	2.0	-0.3	1.3	-3.6	0.5	0.3
Goods excluding foods and energy.....	ID5	4213	7.407	1.3	0.0	0.6	0.2	-0.1	0.1
Services.....	ID5	422	41.904	4.5	0.6	0.4	0.0	0.3	0.6
Trade services.....	ID5	4223	4.118	2.1	0.1	0.2	0.6	-0.2	0.4
Transportation and warehousing services.....	ID5	4222	3.751	2.4	0.4	0.2	-0.1	-0.7	-0.1
Transportation of passengers.....	ID5	42221	0.484	-3.8	1.7	-3.6	-3.9	0.4	-0.2
Transportation and warehousing of goods.....	ID5	42222	3.267	3.4	0.1	0.8	0.4	-0.9	-0.1
Services less trade, transportation, and warehousing.....	ID5	4221	34.035	5.0	0.6	0.5	0.0	0.5	0.6
Construction.....	ID5	423	0.053	4.3	0.6	2.9	0.0	0.1	0.1
Inputs to stage 4 construction producers.....	ID5	43	14.686	0.8	-0.5	0.3	-0.5	-0.3	0.2
Goods.....	ID5	431	10.699	0.8	-0.6	0.5	-0.8	-0.5	0.2
Energy.....	ID5	4312	0.763	-2.6	-1.8	3.2	-8.9	-4.1	3.6
Goods excluding foods and energy.....	ID5	4313	9.936	1.1	-0.5	0.2	0.0	-0.2	0.0
Services.....	ID5	432	3.987	0.7	-0.1	-0.1	0.1	0.1	-0.1
Trade services.....	ID5	4323	1.737	-1.3	-0.3	-1.1	-0.1	0.1	-0.3
Transportation and warehousing services.....	ID5	4322	0.661	1.9	-0.3	0.6	0.1	-0.2	0.6
Transportation of passengers.....	ID5	43221	0.015	-3.8	1.7	-3.6	-3.9	0.4	-0.2
Transportation and warehousing of goods.....	ID5	43222	0.646	2.0	-0.4	0.7	0.1	-0.2	0.6
Services less trade, transportation, and warehousing.....	ID5	4321	1.589	2.3	0.2	0.6	0.3	0.3	-0.1
Stage 3 Intermediate Demand									
Stage 3 intermediate demand.....	ID5	3	100.000	2.2	-0.1	0.2	-0.3	-0.2	0.8
Inputs to stage 3 goods producers.....	ID5	31	43.622	1.3	-0.1	-0.3	0.5	-0.1	1.0
Goods.....	ID5	311	33.726	1.5	-0.2	-0.2	0.6	-0.1	1.2
Foods.....	ID5	3111	10.039	5.4	1.4	-1.1	2.1	0.8	3.7
Energy.....	ID5	3112	1.161	-1.0	-1.0	0.0	-4.2	-1.4	1.2
Goods excluding foods and energy.....	ID5	3113	22.526	-0.2	-0.9	0.2	0.2	-0.4	0.0
Services.....	ID5	312	9.896	0.6	0.2	-0.6	0.0	-0.1	0.3
Trade services.....	ID5	3123	5.529	-0.7	0.5	-1.4	-0.1	-0.2	0.3
Transportation and warehousing services.....	ID5	3122	2.903	1.9	-0.2	0.4	0.0	-0.2	0.5
Transportation of passengers.....	ID5	31221	0.148	-3.8	1.7	-3.6	-3.9	0.4	-0.2
Transportation and warehousing of goods.....	ID5	31222	2.755	2.3	-0.4	0.6	0.2	-0.2	0.6
Services less trade, transportation, and warehousing.....	ID5	3121	1.464	2.8	0.2	0.5	0.3	0.3	-0.1
Inputs to stage 3 services producers.....	ID5	32	55.201	2.9	-0.1	0.6	-0.9	-0.3	0.7
Goods.....	ID5	321	9.933	3.0	-0.7	1.5	-7.4	-1.5	3.8
Foods.....	ID5	3211	0.089	-0.5	-0.1	-0.5	0.2	-0.2	0.9
Energy.....	ID5	3212	5.844	3.8	-1.4	2.1	-12.3	-2.5	6.6
Goods excluding foods and energy.....	ID5	3213	4.000	1.9	0.3	0.5	0.2	-0.2	0.1
Services.....	ID5	322	44.663	2.8	0.0	0.3	0.6	0.0	0.0
Trade services.....	ID5	3223	2.808	-0.6	0.0	-0.9	1.3	1.2	-1.0
Transportation and warehousing services.....	ID5	3222	10.562	5.0	-0.1	0.7	1.6	-0.3	0.1
Transportation of passengers.....	ID5	32221	0.021	-0.2	0.1	-0.2	-0.2	-0.1	0.0
Transportation and warehousing of goods.....	ID5	32222	10.541	5.0	-0.1	0.7	1.6	-0.3	0.1
Services less trade, transportation, and warehousing.....	ID5	3221	31.293	2.4	0.1	0.3	0.2	-0.1	0.1
Construction.....	ID5	323	0.605	4.3	0.6	2.9	0.0	0.1	0.1
Inputs to stage 3 construction producers.....	ID5	33	1.176	1.4	-0.6	0.6	-0.2	0.2	0.0
Goods.....	ID5	331	0.571	0.9	0.3	1.0	-0.3	-0.2	-0.1
Goods excluding foods and energy.....	ID5	3313	0.571	0.9	0.3	1.0	-0.3	-0.2	-0.1
Services.....	ID5	332	0.605	1.8	-1.4	0.2	0.0	0.5	0.1
Trade services.....	ID5	3323	0.558	1.8	-1.5	0.1	0.0	0.6	0.1
Transportation and warehousing services.....	ID5	3322	0.016	3.2	-0.2	0.9	0.3	0.1	0.3
Transportation and warehousing of goods.....	ID5	33222	0.016	3.2	-0.2	0.9	0.3	0.1	0.3
Services less trade, transportation, and warehousing.....	ID5	3321	0.031	1.4	0.5	0.1	-0.4	0.3	-0.2
Stage 2 Intermediate Demand									

See footnotes at end of table.

Table 1. Producer price index percentage changes and weights for Final Demand-Intermediate Demand groupings, seasonally adjusted — Continued
[July 2024]

Grouping	Commodity code		Relative Importance Dec. 2023 ¹	Unadjusted 12-month percent change ² July 2023 to July 2024 ^P	Seasonally adjusted 1-month percent change ²				
	Group code	Item code			Feb. to Mar.	Mar. to Apr. ^P	Apr. to May ^P	May to June ^P	June to July ^P
Stage 2 intermediate demand.....	ID5	2	100.000	2.8	-0.9	1.4	-0.3	0.7	1.1
Inputs to stage 2 goods producers.....	ID5	21	50.583	2.6	-1.8	2.4	-0.9	1.2	2.2
Goods.....	ID5	211	35.955	2.5	-2.7	3.2	-1.4	1.6	3.1
Foods.....	ID5	2111	4.053	-14.0	-1.2	-0.5	1.6	-0.3	-0.2
Energy.....	ID5	2112	16.236	7.9	-5.1	6.0	-4.0	3.4	5.9
Goods excluding foods and energy.....	ID5	2113	15.666	1.4	-0.6	1.2	0.6	0.2	0.9
Services.....	ID5	212	14.340	2.8	0.5	0.6	0.4	0.4	-0.1
Trade services.....	ID5	2123	5.608	3.3	1.1	0.3	0.8	0.9	0.1
Transportation and warehousing services.....	ID5	2122	4.804	2.4	0.1	1.3	0.1	0.0	-0.3
Transportation of passengers.....	ID5	21221	0.178	-3.6	1.7	-3.4	-3.8	0.4	-0.1
Transportation and warehousing of goods.....	ID5	21222	4.626	2.6	0.0	1.5	0.3	0.0	-0.3
Services less trade, transportation, and warehousing.....	ID5	2121	3.928	2.6	0.2	0.2	0.1	0.2	-0.3
Construction.....	ID5	213	0.288	4.3	0.6	2.9	0.0	0.1	0.1
Inputs to stage 2 services producers.....	ID5	22	49.417	3.0	0.0	0.3	0.4	0.3	-0.1
Goods.....	ID5	221	5.237	0.2	-0.6	0.3	-0.4	0.0	0.6
Foods.....	ID5	2211	0.050	-2.9	-0.3	-0.9	0.1	0.7	0.7
Energy.....	ID5	2212	0.321	0.8	-2.8	1.4	-10.2	-1.0	4.8
Goods excluding foods and energy.....	ID5	2213	4.866	0.2	-0.4	0.3	0.3	0.0	0.3
Services.....	ID5	222	43.217	3.3	0.0	0.2	0.5	0.3	-0.1
Trade services.....	ID5	2223	2.365	3.8	0.4	-3.0	4.3	1.6	-1.8
Transportation and warehousing services.....	ID5	2222	2.944	5.6	-0.9	0.7	3.3	-0.2	-0.3
Transportation of passengers.....	ID5	22221	0.414	-3.8	1.7	-3.6	-3.9	0.4	-0.2
Transportation and warehousing of goods.....	ID5	22222	2.530	7.3	-1.4	1.4	4.5	-0.3	-0.3
Services less trade, transportation, and warehousing.....	ID5	2221	37.908	3.1	0.1	0.4	0.1	0.3	0.0
Construction.....	ID5	223	0.963	4.3	0.6	2.9	0.0	0.1	0.1
Stage 1 Intermediate Demand									
Stage 1 intermediate demand.....	ID5	1	100.000	1.6	-0.3	0.3	-0.7	0.0	0.7
Inputs to stage 1 goods producers.....	ID5	11	32.332	-1.3	-1.2	0.1	-0.1	-0.2	0.4
Goods.....	ID5	111	23.262	-2.2	-1.7	0.2	-0.3	-0.2	0.5
Foods.....	ID5	1111	2.768	-12.8	1.0	-1.0	2.4	-0.4	-1.3
Energy.....	ID5	1112	3.428	-0.3	-3.4	1.0	-4.3	0.1	1.9
Goods excluding foods and energy.....	ID5	1113	17.066	-0.8	-1.8	0.3	0.1	-0.2	0.5
Services.....	ID5	112	9.069	1.1	0.1	-0.4	0.2	0.0	0.3
Trade services.....	ID5	1123	5.496	-0.4	0.0	-1.3	0.3	-0.3	0.4
Transportation and warehousing services.....	ID5	1122	0.607	0.8	0.2	0.3	-0.3	0.2	-0.3
Transportation of passengers.....	ID5	11221	0.104	-3.8	1.8	-3.6	-3.9	0.4	-0.2
Transportation and warehousing of goods.....	ID5	11222	0.503	1.8	-0.1	1.2	0.4	0.2	-0.3
Services less trade, transportation, and warehousing.....	ID5	1121	2.966	4.1	0.2	1.1	0.2	0.4	0.2
Construction.....	ID5	113	0.001	4.3	0.6	2.9	0.0	0.1	0.1
Inputs to stage 1 services producers.....	ID5	12	54.779	3.4	0.3	0.4	-0.8	0.2	0.8
Goods.....	ID5	121	16.052	2.0	-0.1	0.9	-3.3	-0.3	1.3
Foods.....	ID5	1211	0.064	13.1	-4.0	1.1	-6.1	7.4	5.0
Energy.....	ID5	1212	4.999	3.1	-0.1	2.1	-10.1	-0.9	4.0
Goods excluding foods and energy.....	ID5	1213	10.989	1.5	-0.1	0.3	0.2	0.0	0.1
Services.....	ID5	122	38.724	3.9	0.5	0.2	0.2	0.4	0.6
Trade services.....	ID5	1223	3.825	0.2	-0.3	-0.7	1.0	0.3	-0.4
Transportation and warehousing services.....	ID5	1222	4.432	1.3	0.4	-0.8	-0.9	0.0	0.2
Transportation of passengers.....	ID5	12221	1.355	-3.8	1.8	-3.6	-3.9	0.4	-0.2
Transportation and warehousing of goods.....	ID5	12222	3.077	3.6	-0.1	0.4	0.4	-0.2	0.3
Services less trade, transportation, and warehousing.....	ID5	1221	30.467	4.8	0.6	0.5	0.2	0.5	0.8
Construction.....	ID5	123	0.003	4.3	0.6	2.9	0.0	0.1	0.1
Inputs to stage 1 construction producers.....	ID5	13	12.891	2.0	-0.3	0.3	-1.1	-0.2	0.6
Goods.....	ID5	131	9.196	2.1	0.0	0.4	-1.6	-0.3	0.7
Energy.....	ID5	1312	0.752	4.1	0.3	2.9	-18.7	-2.2	9.3
Goods excluding foods and energy.....	ID5	1313	8.444	1.9	0.0	0.2	0.1	-0.2	0.1
Services.....	ID5	132	3.695	1.7	-1.0	0.1	0.2	0.2	0.1
Trade services.....	ID5	1323	2.816	1.6	-1.2	-0.1	0.2	0.3	0.0
Transportation and warehousing services.....	ID5	1322	0.783	1.6	-0.4	0.6	0.2	-0.3	0.6
Transportation and warehousing of goods.....	ID5	13222	0.783	1.6	-0.4	0.6	0.2	-0.3	0.6
Services less trade, transportation, and warehousing.....	ID5	1321	0.096	2.9	0.6	0.5	0.3	0.5	-0.2
Special Groupings of Intermediate Demand by Production Flow									
Total goods inputs to stage 4 intermediate demand.....	ID5	9411	46.013	0.6	-0.3	0.4	-0.3	-0.2	0.2
Total services inputs to stage 4 intermediate demand.....	ID5	9412	53.934	3.9	0.4	0.4	0.1	0.1	0.5
Total construction inputs to stage 4 intermediate demand.....	ID5	9413	0.053	4.3	0.6	2.9	0.0	0.1	0.1
Total foods inputs to stage 4 intermediate demand.....	ID5	9414	5.229	-0.9	0.6	0.0	0.6	-0.3	0.9

See footnotes at end of table.

Table 1. Producer price index percentage changes and weights for Final Demand-Intermediate Demand groupings, seasonally adjusted — Continued
[July 2024]

Grouping	Commodity code		Relative Importance Dec. 2023 ¹	Unadjusted 12-month percent change ² July 2023 to July 2024 ^p	Seasonally adjusted 1-month percent change ²				
	Group code	Item code			Feb. to Mar.	Mar. to Apr. ^p	Apr. to May ^p	May to June ^p	June to July ^p
Total energy goods inputs to stage 4 intermediate demand.....	ID5	9415	4.941	0.9	-0.8	1.7	-4.4	-0.3	0.8
Total goods less foods and energy inputs to stage 4 intermediate demand.	ID5	9416	35.843	0.7	-0.3	0.3	0.2	-0.1	0.1
Total goods inputs to stage 3 intermediate demand.....	ID5	9311	44.230	1.8	-0.3	0.2	-1.3	-0.4	1.7
Total services inputs to stage 3 intermediate demand.....	ID5	9312	55.164	2.4	0.0	0.2	0.5	-0.1	0.1
Total construction inputs to stage 3 intermediate demand.....	ID5	9313	0.605	4.3	0.6	2.9	0.0	0.1	0.1
Total foods inputs to stage 3 intermediate demand.....	ID5	9314	10.128	5.4	1.4	-1.1	2.1	0.8	3.7
Total energy goods inputs to stage 3 intermediate demand.....	ID5	9315	7.005	3.0	-1.3	1.8	-11.0	-2.3	5.7
Total goods less foods and energy inputs to stage 3 intermediate demand.	ID5	9316	27.097	0.1	-0.7	0.3	0.2	-0.4	0.0
Total goods inputs to stage 2 intermediate demand.....	ID5	9211	41.192	2.2	-2.5	2.8	-1.3	1.4	2.8
Total services inputs to stage 2 intermediate demand.....	ID5	9212	57.557	3.2	0.1	0.3	0.5	0.3	-0.1
Total construction inputs to stage 2 intermediate demand.....	ID5	9213	1.251	4.3	0.6	2.9	0.0	0.1	0.1
Total foods inputs to stage 2 intermediate demand.....	ID5	9214	4.103	-13.9	-1.2	-0.5	1.5	-0.3	-0.2
Total energy goods inputs to stage 2 intermediate demand.....	ID5	9215	16.557	7.8	-5.0	5.9	-4.1	3.3	5.9
Total goods less foods and energy inputs to stage 2 intermediate demand.	ID5	9216	20.532	1.1	-0.5	0.9	0.5	0.2	0.8
Total goods inputs to stage 1 intermediate demand.....	ID5	9111	48.510	0.0	-0.9	0.5	-1.6	-0.3	0.8
Total services inputs to stage 1 intermediate demand.....	ID5	9112	51.488	3.3	0.3	0.1	0.2	0.3	0.5
Total construction inputs to stage 1 intermediate demand.....	ID5	9117	0.004	4.3	0.6	2.9	0.0	0.1	0.1
Total foods inputs to stage 1 intermediate demand.....	ID5	9114	2.832	-12.2	0.9	-1.0	2.2	-0.2	-1.2
Total energy goods inputs to stage 1 intermediate demand.....	ID5	9115	9.179	1.9	-1.3	1.7	-8.8	-0.6	3.6
Total goods less foods and energy inputs to stage 1 intermediate demand.	ID5	9116	36.499	0.5	-0.9	0.2	0.1	-0.2	0.3

¹ Comprehensive relative importance figures are initially computed after the publication of December indexes and are recalculated after final December indexes are available. Individual items and subtotals may not add exactly to totals because of rounding differences.

² All indexes are subject to revision for 4 months after their originally scheduled publication to incorporate late reports and corrections by survey respondents. In addition, seasonally adjusted indexes are subject to change for up to 5 years due to the recalculation of seasonal factors published each January.

³ PPI defines Total finished as including only the personal consumption and private capital investment portions of final demand.

⁴ Trade indexes measure changes in margins received by wholesalers and retailers.

⁵ The PPI definition of foods does not include food and beverages for immediate consumption. PPI defines food and beverages for immediate consumption as the service of preparing meals, snacks, and beverages to customer order for immediate on-premises and off-premises consumption.

⁶ Distributive services include transportation, warehousing, and trade of goods.

⁷ Includes intermediate trade, transportation, and warehousing services.

⁸ Includes crude petroleum.

⁹ Excludes crude petroleum.

^p Preliminary

"/" Data not available.

Table 2. Producer price index percentage changes for selected commodity groupings by Final Demand-Intermediate Demand category, seasonally adjusted
[July 2024]

Grouping	Commodity code		Unadjusted 12-month percent change ¹	Seasonally adjusted 1-month percent change ¹				
	Group code	Item code		July 2023 to July 2024 ^P	Feb. to Mar.	Mar. to Apr. ^P	Apr. to May ^P	May to June ^P
Final Demand								
Final demand.....	FD	4	2.2	0.0	0.5	0.0	0.2	0.1
Final demand goods.....	FD	41	1.7	-0.2	0.4	-0.8	-0.4	0.6
Final demand foods.....	FD	411	1.7	0.3	-0.7	-0.1	0.1	0.6
Fresh fruits and melons ²	01	11	4.4	-7.9	7.0	-2.1	-6.3	10.3
Fresh and dry vegetables ²	01	13	-17.9	15.3	-18.7	3.1	-4.4	-5.4
Grains.....	01	2	-27.9	2.6	-4.0	8.0	-1.9	-6.2
Eggs for fresh use ²	01	7107	80.4	-29.8	11.2	-34.8	55.9	-8.9
Oilseeds.....	01	8301	-21.7	0.4	-0.9	4.7	-3.1	-2.0
Bakery products ²	02	11	2.2	0.2	-0.4	0.0	0.1	0.1
Milled rice ²	02	13	-6.8	0.4	0.2	0.2	0.4	-0.6
Pasta products ²	02	1402	-1.2	0.0	0.0	0.0	0.0	0.0
Beef and veal.....	02	2101	5.2	1.2	-5.9	-1.6	2.0	7.7
Pork.....	02	2104	12.3	-0.9	-0.5	2.1	-3.1	1.8
Processed young chickens.....	02	2203	10.5	3.2	2.0	-3.1	2.0	-1.3
Processed turkeys ²	02	2206	-11.4	0.4	-0.8	1.2	-2.2	-0.3
Finfish and shellfish.....	02	23	-3.8	2.0	1.9	-0.7	-5.2	0.0
Dairy products ²	02	3	9.4	1.0	-0.1	2.0	1.6	1.2
Processed fruits and vegetables ²	02	4	4.0	-0.9	0.2	0.4	0.1	0.8
Confectionery end products ²	02	55	1.7	0.3	0.5	0.1	-0.1	0.5
Soft drinks ²	02	62	3.5	0.2	-0.2	0.3	-0.3	-0.2
Roasted coffee ²	02	6301	9.1	-0.1	-0.7	0.6	0.1	3.3
Shortening and cooking oils ²	02	78	-9.1	0.9	0.1	-2.5	-0.2	0.4
Frozen specialty food ²	02	85	0.9	-0.1	-0.1	0.0	0.3	-0.1
Final demand energy.....	FD	412	0.3	-1.2	1.8	-4.6	-2.1	1.9
Liquefied petroleum gas ²	05	32	1.9	0.1	6.3	-3.5	-4.2	0.4
Residential electric power.....	05	41	2.4	0.7	0.5	0.1	-0.3	-0.8
Residential natural gas.....	05	51	1.0	-1.2	-3.1	0.3	1.9	0.9
Gasoline.....	05	71	-4.9	-3.0	4.5	-7.3	-5.4	2.8
Home heating oil and distillates.....	05	7302	-1.8	-2.7	1.2	-6.1	-5.0	9.6
No. 2 diesel fuel.....	05	7303	6.7	1.8	2.8	-23.7	-3.1	12.9
Final demand goods less foods and energy.....	FD	413	2.1	0.0	0.3	0.2	0.0	0.2
Alcoholic beverages.....	02	61	1.2	-0.3	0.1	-0.2	0.4	0.3
Pet food ²	02	9402	0.0	0.0	0.0	0.0	0.0	-0.2
Women's, girls', and infants' apparel ²	03	8106	1.5	0.0	0.0	0.0	0.1	0.0
Men's and boys' apparel ²	03	8107	0.4	0.0	-0.3	-0.1	0.0	0.0
Textile housefurnishings ²	03	82	1.1	-0.2	0.2	0.6	0.0	-0.1
Footwear ²	04	3	1.9	0.0	0.8	0.0	0.0	0.1
Industrial chemicals.....	06	1	-0.1	0.2	1.2	-1.0	-0.1	2.4
Pharmaceutical preparations.....	06	38	1.2	0.0	0.2	0.2	0.0	0.1
Soaps and detergents ²	06	71	1.9	0.1	0.2	0.1	0.0	0.0
Cleaning and polishing products ²	06	72	0.7	0.1	0.1	0.0	0.0	0.1
Cosmetics and other toiletries ²	06	75	0.9	0.1	0.0	0.1	0.0	0.0
Tires ²	07	1201	-0.9	-0.1	0.0	-0.5	-0.3	0.2
Consumer, institutional, and commercial products, n.e.c. ²	07	2B	0.3	0.3	0.2	-0.5	0.3	0.2
Sanitary paper products ²	09	1501	-3.1	-0.8	0.2	0.2	-0.1	0.4
Iron and steel scrap.....	10	12	-0.9	-14.1	1.6	2.8	0.1	7.9
Agricultural machinery and equipment ²	11	1	0.7	0.5	0.2	-0.2	0.0	-0.5
Construction machinery and equipment ²	11	2	2.4	-0.1	0.2	0.1	0.1	0.2
Metal cutting machine tools ²	11	37	0.5	0.0	0.0	0.2	0.0	0.0
Metal forming machine tools.....	11	38	8.6	0.6	0.6	-1.5	0.5	0.7
Tools, dies, jigs, fixtures, and industrial molds ²	11	39	5.2	0.0	0.2	0.2	0.0	0.5
Pumps, compressors, and equipment ²	11	41	3.6	0.7	0.2	0.4	-0.1	0.4
Industrial material handling equipment ²	11	44	4.0	0.1	1.7	0.1	0.1	0.0
Electronic computers and computer equipment ²	11	5	-0.2	-0.1	0.4	-0.8	-0.1	-1.7
Textile machinery and equipment ²	11	62	0.0	0.0	0.0	0.0	0.0	0.0
Paper industries machinery ²	11	64	1.6	0.6	0.1	0.0	0.0	0.0
Printing trades machinery and equipment ²	11	65	1.9	0.0	-0.1	0.2	-0.1	0.3
Transformers and power regulators ²	11	74	3.1	0.4	-1.0	0.0	0.6	0.2
Communication and related equipment.....	11	76	4.3	0.5	-0.2	0.2	0.2	0.2
Electronic components and accessories.....	11	78	0.6	0.0	0.3	-0.1	-0.7	0.0
X-ray and electromedical equipment ²	11	7905	0.7	0.0	0.0	0.0	0.0	0.1
Oil field and gas field machinery ²	11	91	3.9	0.0	0.0	0.0	0.0	0.0
Mining machinery and equipment ²	11	92	9.2	0.0	0.6	0.2	0.5	2.4
Internal combustion engines ²	11	94	3.2	0.0	0.4	0.1	0.0	0.6

See footnotes at end of table.

Table 2. Producer price index percentage changes for selected commodity groupings by Final Demand-Intermediate Demand category, seasonally adjusted — Continued
 [July 2024]

Grouping	Commodity code		Unadjusted 12-month percent change ¹	Seasonally adjusted 1-month percent change ¹				
	Group code	Item code		July 2023 to July 2024 ^P	Feb. to Mar.	Mar. to Apr. ^P	Apr. to May ^P	May to June ^P
Household furniture ²	12	1	-0.4	0.2	0.4	0.5	0.2	0.1
Commercial furniture ²	12	2	2.2	0.2	-0.2	0.3	0.3	0.0
Floor coverings ²	12	3	1.9	1.4	-0.6	-0.4	1.2	0.0
Household appliances ²	12	4	0.2	0.2	-0.1	0.0	-0.5	0.0
Home electronic equipment ²	12	5	1.6	1.9	0.0	-0.4	0.0	0.0
Lawn and garden equipment excl. garden tractors ²	12	66	1.9	0.2	0.0	0.1	0.0	-0.2
Passenger cars.....	14	1101	-1.1	0.3	0.2	-0.3	0.5	-0.2
Light motor trucks.....	14	1105	1.1	0.4	-0.1	-0.2	-0.2	0.2
Heavy motor trucks ²	14	1106	1.1	0.0	0.0	0.1	0.0	0.0
Motor vehicles parts ²	14	12	1.1	0.2	0.1	0.0	0.1	0.2
Truck trailers ²	14	14	-0.4	-0.1	-0.4	0.0	-0.1	0.4
Travel trailers and campers ²	14	16	0.3	0.0	0.0	-0.1	0.1	0.2
Aircraft.....	14	21	4.0	0.1	0.1	0.1	0.2	0.3
Ships ²	14	31	1.5	0.0	0.0	0.2	0.3	0.1
Railroad equipment ²	14	4	0.8	0.1	0.0	0.2	0.0	0.0
Toys, games, and children's vehicles ²	15	11	0.2	0.0	0.0	0.0	0.0	0.0
Sporting and athletic goods ²	15	12	9.4	0.0	0.0	0.0	0.0	0.0
Cigarettes ²	15	21	11.5	0.0	0.0	3.3	0.0	0.0
Mobile homes.....	15	5	-0.2	-0.5	-0.1	-0.1	-0.4	0.2
Medical, surgical & personal aid devices.....	15	6	2.7	0.2	0.4	0.1	0.2	0.0
Jewelry, platinum and karat gold ²	15	9402	7.8	1.9	2.3	1.0	-1.4	1.0
Costume jewelry and novelties ²	15	9404	1.8	0.0	0.0	-1.1	2.2	0.0
Final demand services.....	FD	42	2.6	0.1	0.6	0.4	0.4	-0.2
Final demand trade services ³	FD	423	-0.7	-0.4	0.5	0.7	1.4	-1.3
Machinery and equipment parts and supplies wholesaling ²	57	1102	4.8	-1.0	1.1	0.3	-2.9	1.5
Machinery and vehicle wholesaling ²	57	1103	0.0	0.1	6.0	-3.6	5.4	-4.1
Professional and commercial equipment wholesaling ²	57	1104	1.2	-2.7	1.0	-4.1	1.2	1.6
Furnishings wholesaling ²	57	2	1.3	2.5	0.1	-0.7	0.9	0.0
Chemicals and allied products wholesaling ²	57	5	2.0	-1.5	-0.2	2.0	-0.4	2.1
Paper and plastics products wholesaling ²	57	6	-2.0	-0.5	-0.8	-0.8	-0.5	0.3
Apparel wholesaling ²	57	7	-0.6	7.2	-5.6	0.6	0.8	-1.9
Food and alcohol wholesaling ²	57	8	5.8	3.0	1.6	-0.2	1.6	0.2
Food and alcohol retailing.....	58	1	0.2	-0.1	0.9	1.6	1.0	-3.7
Health, beauty, and optical goods retailing ²	58	2	4.9	-3.6	0.2	1.5	0.5	0.1
Apparel, jewelry, footwear, and accessories retailing.....	58	3	3.4	1.0	-1.5	-0.1	1.4	-0.6
Computer hardware, software, and supplies retailing ²	58	4	9.1	11.2	15.7	3.0	16.5	4.4
TV, video, and photographic equipment and supplies retailing.....	58	5	-4.2	-6.3	-2.2	6.0	-8.1	0.6
Automobiles retailing (partial).....	58	6101	-34.8	-4.4	-2.3	5.8	-6.0	-3.8
Automotive parts, including tires, retailing ²	58	6102	-2.0	-3.1	-2.4	0.6	0.7	0.7
RVs, trailers, and campers retailing ²	58	8	-1.4	3.8	-8.7	26.2	-16.5	9.7
Sporting goods, including boats, retailing.....	58	9	6.8	-0.7	4.1	-1.4	2.5	-0.3
Lawn, garden, and farm equipment and supplies retailing ²	58	A	0.8	1.0	0.2	0.8	0.4	-0.3
Furniture retailing ²	58	B	-10.9	-1.9	-2.9	-1.6	0.9	0.0
Flooring and floor coverings retailing ²	58	C	3.0	-1.0	-0.1	2.0	0.1	0.3
Hardware, building materials, and supplies retailing.....	58	D	4.4	-2.2	1.6	-1.1	1.0	0.4
Major household appliances retailing.....	58	E	1.5	-6.4	-1.7	3.6	2.0	-0.4
Fuels and lubricants retailing.....	58	F	10.8	2.5	-10.3	13.0	5.3	-5.3
Cleaning supplies and paper products retailing ²	58	G	6.1	-0.5	-0.5	1.1	0.1	1.2
Book retailing ²	58	H	4.5	2.8	-1.4	-0.3	3.2	2.5
Final demand transportation and warehousing services.....	FD	422	0.6	0.2	-0.5	-0.8	-0.1	0.4
Rail transportation of freight and mail ²	30	11	3.9	-0.1	0.9	0.2	0.0	0.6
Truck transportation of freight ²	30	12	1.6	-0.5	0.6	0.2	-0.3	0.6
Air transportation of freight ²	30	14	1.4	0.8	1.6	-0.4	0.5	-1.0
Courier, messenger, and U.S. postal services.....	30	16	4.6	0.0	0.3	0.4	0.0	0.4
Rail transportation of passengers.....	30	21	0.0	0.0	0.0	0.0	-0.1	0.0
Airline passenger services.....	30	22	-3.8	1.8	-3.6	-3.9	0.4	-0.2
Final demand services less trade, transportation, and warehousing.....	FD	421	4.3	0.3	0.7	0.4	0.1	0.3
Sales of books.....	33	11	7.9	-0.3	0.1	0.7	0.1	1.0
Sales and subscriptions of periodicals and newspapers.....	33	12	4.2	-0.4	0.1	0.2	1.8	0.1
Application software publishing ²	34	2	6.0	-0.3	0.5	3.3	-0.6	-1.9
Advertising space sales in periodicals, newspapers, directories, and mailing lists ²	36	1	-0.9	0.0	0.4	-0.4	0.0	0.0
Residential wired telecommunication services ²	37	11	4.9	1.4	1.9	0.6	-0.2	-0.1
Wireless telecommunication services.....	37	2	1.6	0.1	0.1	0.9	0.1	0.1
Cable and satellite subscriber services.....	37	3	4.9	-1.1	1.4	0.7	0.5	0.7
Internet access services ²	37	4	0.8	0.2	0.1	0.1	-0.1	-0.1

See footnotes at end of table.

Table 2. Producer price index percentage changes for selected commodity groupings by Final Demand-Intermediate Demand category, seasonally adjusted — Continued
 [July 2024]

Grouping	Commodity code		Unadjusted 12-month percent change ¹	Seasonally adjusted 1-month percent change ¹				
	Group code	Item code		July 2023 to July 2024 ^P	Feb. to Mar.	Mar. to Apr. ^P	Apr. to May ^P	May to June ^P
Bundled wired telecommunications access services ²	37	5	4.6	-0.2	3.0	-0.5	-0.3	0.7
Consumer loans (partial)	39	12	4.8	1.7	2.7	-0.7	-9.1	-1.0
Deposit services (partial) ²	39	2	19.4	2.7	-0.2	0.4	4.7	0.4
Other credit intermediation, incl. trust services (partial) ²	39	3	-2.6	0.0	-3.4	0.8	0.0	0.1
Securities brokerage, dealing, investment advice, and related services ²	40	1	9.0	2.5	-0.1	-0.2	1.5	1.8
Portfolio management ²	40	2	12.5	0.7	4.2	-0.7	0.6	2.3
Life insurance ²	41	1101	-1.5	-0.7	-0.1	0.3	0.0	0.0
Disability insurance, including accidental death ²	41	1102	-0.5	0.0	0.0	0.0	0.0	0.0
Health and medical insurance	41	1103	4.6	0.3	0.1	0.2	0.2	0.1
Property and casualty insurance ²	41	1104	5.5	0.4	0.2	0.8	0.2	0.2
Annuities ²	41	2	2.2	0.0	2.2	-0.2	0.0	0.0
Residential property sales and leases, brokerage fees and commissions	43	21	4.4	0.0	1.0	0.5	0.5	0.3
Passenger car rental	44	1	3.5	4.7	-0.6	-0.9	4.5	0.7
Legal services	45	1	7.8	0.1	1.6	0.3	0.1	0.5
Tax preparation and planning	45	2102	3.7	1.0	0.5	3.0	-3.7	0.9
Architectural and engineering services	45	3	2.4	0.0	0.7	0.2	0.3	-0.1
Management, scientific, and technical consulting services ²	45	4	3.3	0.3	0.9	0.6	-0.2	0.1
Arrangement of flights (partial)	47	1	-6.9	-0.3	0.6	0.0	-1.5	3.4
Arrangement of vehicle rentals and lodging ²	47	2	12.2	-0.1	1.1	0.0	0.0	3.6
Arrangement of cruises and tours ²	47	3	-1.5	-1.3	0.3	0.9	-0.9	0.1
Physician care	51	1101	1.5	0.3	0.1	0.2	0.2	-0.2
Medical laboratory and diagnostic imaging care ²	51	1102	0.4	0.3	0.1	0.0	0.0	0.0
Home health and hospice care	51	1103	2.1	0.0	0.0	0.1	0.2	0.2
Hospital outpatient care ²	51	1104	2.8	0.0	-0.2	0.3	0.1	0.0
Dental care	51	1105	4.9	-0.1	1.9	0.6	0.2	0.0
Hospital inpatient care	51	2101	4.9	0.0	0.1	0.6	0.4	0.2
Nursing home care	51	2102	3.5	0.2	0.4	0.2	0.0	0.9
Traveler accommodation services	53	11	0.7	-2.3	3.2	3.1	-0.5	-0.4
Food and beverages for immediate consumption services (partial) ²	54	1	4.4	1.2	0.3	-0.6	0.5	0.3
Motor vehicle repair and maintenance (partial) ²	55	2	5.4	0.4	1.1	0.4	0.1	0.0
Membership dues and admissions and recreation facility use fees (partial) ²	56	1	2.9	1.7	-0.4	-2.3	-3.1	2.4
Recreational activity instruction fees (partial) ²	56	2	7.2	0.0	0.0	0.0	6.6	0.0
Gaming receipts (partial) ²	56	3	-0.4	2.1	-3.0	1.7	-1.5	-1.2
Mining services ²	60	1	2.6	-0.9	1.3	0.0	0.1	-0.2
Final demand construction	FD	43	1.4	0.1	0.1	0.0	0.4	0.8
New warehouse building construction ²	80	1101	0.6	0.0	0.4	0.0	0.0	0.3
New school building construction ²	80	1102	1.8	-0.1	0.3	-0.2	0.2	1.4
New office building construction ²	80	1103	2.5	0.3	-0.4	0.0	1.1	1.3
New industrial building construction ²	80	1104	0.3	0.1	-0.1	0.0	0.1	-0.1
New health care building construction ²	80	1105	0.1	-0.1	0.1	0.0	0.0	0.3
Intermediate Demand by Commodity Type								
Processed goods for intermediate demand	ID6	1	0.8	-0.6	0.6	-1.4	-0.2	0.7
Processed foods and feeds	ID6	9112	1.4	0.2	-0.2	0.2	0.7	1.3
Meats	02	21	6.0	0.5	-2.1	-0.5	0.1	4.5
Processed poultry	02	22	2.6	3.1	1.1	0.7	-2.5	-1.1
Dairy products ²	02	3	9.4	1.0	-0.1	2.0	1.6	1.2
Processed fruits and vegetables ²	02	4	4.0	-0.9	0.2	0.4	0.1	0.8
Refined sugar and byproducts ²	02	53	16.1	1.7	-0.1	0.2	0.0	0.1
Fats and oils ²	02	7	-2.9	-0.4	0.4	-2.0	0.2	2.3
Prepared animal feeds	02	9	-7.6	-1.7	-0.4	0.2	0.7	0.2
Processed materials less foods and feeds	ID6	9111	0.7	-0.6	0.6	-1.6	-0.2	0.7
Synthetic fibers ²	03	1	1.2	3.8	-1.9	3.4	-2.2	-1.1
Processed yarns and threads ²	03	2	-1.3	0.3	0.9	-0.3	-0.2	-0.6
Finished fabrics ²	03	4	0.3	0.4	0.3	-0.3	0.2	0.1
Liquefied petroleum gas ²	05	32	1.9	0.1	6.3	-3.5	-4.2	0.4
Commercial electric power	05	42	3.0	0.8	1.2	-0.8	0.7	-1.2
Industrial electric power	05	43	1.1	-0.3	1.3	-2.5	1.2	-0.9
Commercial natural gas	05	52	0.5	0.4	-3.1	-4.0	2.4	0.0
Industrial natural gas	05	53	-3.7	-0.4	-3.4	-3.6	0.8	2.8
Natural gas to electric utilities	05	54	3.3	-6.7	-2.0	-3.4	4.0	2.7
Gasoline	05	71	-4.9	-3.0	4.5	-7.3	-5.4	2.8
Jet fuel ²	05	7203	5.7	-5.4	0.3	-6.2	-4.6	7.1
No. 2 diesel fuel	05	7303	6.7	1.8	2.8	-23.7	-3.1	12.9
Residual fuels ²	05	74	16.1	0.5	1.1	9.0	-1.7	1.0

See footnotes at end of table.

Table 2. Producer price index percentage changes for selected commodity groupings by Final Demand-Intermediate Demand category, seasonally adjusted — Continued
 [July 2024]

Grouping	Commodity code		Unadjusted 12-month percent change ¹	Seasonally adjusted 1-month percent change ¹				
	Group code	Item code		July 2023 to July 2024 ^P	Feb. to Mar.	Mar. to Apr. ^P	Apr. to May ^P	May to June ^P
Finished lubricants ²	05	76	-1.3	-0.9	0.0	0.0	-0.1	-0.1
Lubricating oil base stocks ²	05	78	8.6	-4.7	3.2	4.4	5.4	-2.9
Asphalt.....	05	8102	4.0	8.8	-4.6	3.9	-3.0	-3.1
Basic inorganic chemicals ²	06	13	-5.2	0.2	-0.1	0.9	0.2	-0.9
Basic organic chemicals.....	06	14	1.1	0.2	1.5	-1.4	-0.2	3.1
Prepared paint ²	06	21	-0.5	-0.1	-0.2	0.1	0.1	0.1
Paint materials ²	06	22	-3.4	0.2	-0.2	-1.7	-1.5	0.0
Medicinal and botanical chemicals ²	06	31	5.1	0.1	0.2	0.0	-0.2	0.1
Biological products, including diagnostics.....	06	37	0.9	0.5	1.8	-0.1	-0.6	-0.3
Fats and oils, inedible ²	06	4	-1.3	-0.7	-0.3	-1.6	0.7	1.4
Nitrogenates.....	06	5201	-1.4	4.2	-1.2	-1.6	-1.6	0.0
Phosphates.....	06	5202	19.7	-1.6	-1.8	-6.4	4.7	1.7
Other agricultural chemicals ²	06	53	-5.3	0.1	0.1	0.2	0.0	0.0
Plastic resins and materials.....	06	6	0.4	-2.0	1.2	-0.6	-0.5	1.4
Industrial gases ²	06	7903	2.3	3.1	1.2	0.4	2.0	-1.1
Adhesives and sealants ²	06	7904	0.2	0.5	0.3	0.1	-0.2	0.1
Synthetic rubber ²	07	1102	13.1	3.2	4.6	2.0	1.6	-0.6
Tires ²	07	1201	-0.9	-0.1	0.0	-0.5	-0.3	0.2
Plastic construction products ²	07	21	0.0	0.0	0.6	-0.3	-0.2	0.1
Unsupported plastic film, sheet, other shapes ²	07	22	-0.1	0.1	0.8	0.5	-0.1	0.2
Parts for manufacturing from plastics ²	07	26	0.0	0.6	0.0	0.0	0.0	0.0
Plastic packaging products ²	07	2A	-0.3	0.3	0.6	-0.3	0.1	-0.5
Softwood lumber.....	08	11	-13.1	1.9	5.7	-5.0	3.3	-1.0
Hardwood lumber ²	08	12	-3.1	-1.3	1.7	0.8	0.3	0.4
Millwork.....	08	2	-0.1	-0.7	0.3	-0.6	0.2	-0.4
Plywood ²	08	3	-0.4	-0.2	1.3	-2.1	-1.0	-1.4
Paper ²	09	13	0.9	-0.2	0.4	0.6	-0.2	0.1
Paperboard ²	09	14	0.3	0.2	0.5	0.3	0.3	0.4
Paper boxes and containers ²	09	1503	0.1	-0.4	0.6	0.8	0.2	0.5
Building paper and board ²	09	2	-3.2	7.0	17.6	-12.9	-4.6	-0.1
Commercial printing ²	09	47	2.1	0.2	-0.2	0.1	0.0	0.4
Foundry and forge shop products ²	10	15	0.6	0.4	-0.3	-1.0	0.8	-1.0
Steel mill products ²	10	17	-14.0	-8.1	-2.7	0.3	-1.8	-3.3
Primary nonferrous metals ²	10	22	8.4	1.1	3.8	5.0	0.8	-0.3
Secondary nonferrous metals ²	10	24	7.1	2.7	2.6	4.5	0.1	0.9
Aluminum mill shapes ²	10	2501	4.7	-0.5	0.6	4.4	2.4	0.6
Copper and brass mill shapes ²	10	2502	12.0	1.8	4.4	4.5	2.1	-1.7
Nonferrous wire and cable ²	10	26	8.3	0.2	3.8	5.4	0.1	-1.6
Nonferrous foundry shop products.....	10	28	4.9	1.1	-0.3	1.0	0.8	0.2
Metal containers ²	10	3	-1.5	-0.4	-0.1	0.2	0.3	1.1
Hardware ²	10	4	-0.7	-0.5	-0.1	0.1	0.0	0.0
Plumbing fixtures and brass fittings.....	10	5	1.5	0.2	0.1	0.1	0.1	0.7
Heating equipment ²	10	6	2.9	0.9	0.5	0.3	0.1	0.0
Fabricated structural metal products.....	10	7	-1.0	-3.3	-0.3	0.0	-0.7	0.1
Bolts, nuts, screws, rivets, and washers ²	10	81	8.0	0.4	1.0	0.0	0.0	0.0
Lighting fixtures ²	10	83	2.0	0.9	-0.1	0.6	0.1	0.0
Fabricated ferrous wire products.....	10	88	2.1	-0.2	-0.4	-0.4	3.3	-0.2
Other miscellaneous metal products ²	10	89	2.2	0.1	0.3	0.8	0.3	0.0
Fluid power equipment ²	11	43	3.6	-0.1	1.5	0.4	0.0	0.0
Mechanical power transmission equipment ²	11	45	5.0	0.6	0.0	0.2	0.4	1.1
Air conditioning and refrigeration equipment.....	11	48	2.2	-0.8	0.9	0.7	-0.7	0.1
Metal valves, except fluid power.....	11	4902	1.7	0.5	0.2	0.0	0.1	-0.6
Ball and roller bearings ²	11	4905	3.1	0.5	0.0	-0.2	0.0	0.0
Wiring devices ²	11	71	0.2	-0.1	-0.2	0.3	0.0	-0.1
Motors, generators, motor generator sets ²	11	73	2.6	1.2	0.0	0.0	0.0	0.0
Switchgear, switchboard, and industrial controls equip. ²	11	75	7.4	0.6	0.2	0.6	1.6	0.5
Electronic components and accessories.....	11	78	0.6	0.0	0.3	-0.1	-0.7	0.0
Internal combustion engines ²	11	94	3.2	0.0	0.4	0.1	0.0	0.6
Machine shop products ²	11	95	1.2	0.1	-0.1	0.1	0.0	0.2
Flat glass ²	13	11	1.2	0.0	-0.1	0.3	-0.5	0.4
Cement.....	13	22	6.3	1.4	-0.3	0.7	0.2	0.2
Concrete products.....	13	3	4.6	0.9	-0.7	0.2	0.1	0.0
Asphalt felts and coatings ²	13	6	0.7	0.1	-1.7	2.3	-0.4	0.3
Paving mixtures and blocks.....	13	94	4.4	1.0	0.0	-1.2	-0.1	0.5
Motor vehicle parts ²	14	12	1.1	0.2	0.1	0.0	0.1	0.2
Aircraft engines and engine parts.....	14	23	4.0	0.1	0.1	0.3	0.2	0.3

See footnotes at end of table.

Table 2. Producer price index percentage changes for selected commodity groupings by Final Demand-Intermediate Demand category, seasonally adjusted — Continued
 [July 2024]

Grouping	Commodity code		Unadjusted 12-month percent change ¹	Seasonally adjusted 1-month percent change ¹				
	Group code	Item code		July 2023 to July 2024 ^P	Feb. to Mar.	Mar. to Apr. ^P	Apr. to May ^P	May to June ^P
Aircraft parts and auxiliary equipment, n.e.c.....	14	25	3.3	0.1	1.2	0.1	0.3	0.4
Medical, surgical, and personal aid devices.....	15	6	2.7	0.2	0.4	0.1	0.2	0.0
Unprocessed goods for intermediate demand.....	ID6	2	3.2	-1.4	2.1	0.1	0.8	3.6
Unprocessed foodstuffs and feedstuffs.....	ID6	21	0.3	1.6	-0.6	2.8	-1.2	2.9
Wheat ²	01	21	-29.4	-0.8	-2.1	18.3	-9.8	-11.0
Corn.....	01	2202	-28.3	4.1	-4.9	6.7	0.0	-5.4
Slaughter cattle.....	01	31	11.5	7.7	-2.5	5.6	-1.3	3.9
Slaughter hogs.....	01	32	-8.4	4.6	22.4	-10.8	-14.9	1.6
Slaughter chickens.....	01	4102	9.2	-4.1	-5.3	-2.6	2.7	8.9
Slaughter turkeys.....	01	42	-23.0	0.3	-12.9	8.1	-9.1	8.2
Raw milk.....	01	6	37.8	0.1	-2.3	9.9	5.0	7.6
Hay and hayseeds ²	01	81	-18.5	2.2	5.2	28.1	-17.3	4.2
Oilseeds.....	01	8301	-21.7	0.4	-0.9	4.7	-3.1	-2.0
Raw cane sugar and byproducts ²	02	5201	2.6	1.3	0.0	0.1	-0.9	-0.1
Unprocessed nonfood materials.....	ID6	22	5.0	-3.3	3.8	-1.6	2.1	4.0
Raw cotton ²	01	51	-20.2	1.3	-11.5	-15.6	-1.3	-6.4
Hides and skins.....	04	1	-13.9	1.1	1.9	1.6	1.2	-5.3
Coal ²	05	1	8.1	-3.7	-0.7	1.6	2.0	0.3
Natural gas ²	05	31	0.1	-36.5	-4.9	17.4	29.4	13.3
Crude petroleum ²	05	61	10.4	1.7	8.5	-7.3	-0.1	5.5
Logs, bolts, timber, pulpwood, and woodchips ²	08	5	-3.0	-0.2	-1.7	-0.2	0.1	0.4
Recyclable paper ²	09	12	83.9	11.4	-0.6	2.0	0.7	0.1
Iron ores ²	10	11	1.9	-1.3	0.7	0.3	-0.7	2.1
Iron and steel scrap.....	10	12	-0.9	-14.1	1.6	2.8	0.1	7.9
Nonferrous metal ores ²	10	21	8.3	3.4	3.1	2.2	-2.9	2.2
Copper base scrap ²	10	2301	15.8	4.1	6.1	7.6	-4.7	3.0
Aluminum base scrap.....	10	2302	29.8	-1.3	2.0	17.8	7.7	-1.7
Construction sand, gravel, and crushed stone.....	13	21	7.4	0.3	0.5	0.0	0.1	0.5
Services for intermediate demand.....	ID6	3	3.3	0.2	0.3	0.3	0.2	0.3
Trade services for intermediate demand ³	ID6	33	1.4	0.1	-0.4	0.6	0.0	0.1
Machinery and equipment parts and supplies wholesaling ²	57	1102	4.8	-1.0	1.1	0.3	-2.9	1.5
Building materials, paint, and hardware wholesaling.....	57	3	-2.8	-1.7	0.3	-1.0	0.9	-0.5
Metals, minerals, and ores wholesaling ²	57	4	-6.6	2.7	-6.2	-2.0	-2.8	0.6
Chemicals and allied products wholesaling ²	57	5	2.0	-1.5	-0.2	2.0	-0.4	2.1
Paper and plastics products wholesaling ²	57	6	-2.0	-0.5	-0.8	-0.8	-0.5	0.3
Food wholesaling ²	57	8101	5.9	2.8	1.8	-0.1	1.8	0.3
Automotive parts, including tires, retailing ²	58	6102	-2.0	-3.1	-2.4	0.6	0.7	0.7
Hardware, building material, and supplies retailing.....	58	D	4.4	-2.2	1.6	-1.1	1.0	0.4
Transportation and warehousing services for intermediate demand.....	ID6	32	3.2	0.0	0.5	0.6	-0.3	0.1
Rail transportation of freight and mail ²	30	11	3.9	-0.1	0.9	0.2	0.0	0.6
Truck transportation of freight ²	30	12	1.6	-0.5	0.6	0.2	-0.3	0.6
Water transportation of freight ²	30	13	2.0	-1.1	0.5	1.3	0.2	0.4
Air transportation of freight ²	30	14	1.4	0.8	1.6	-0.4	0.5	-1.0
U.S. Postal Service ²	30	1601	3.2	0.0	0.0	0.0	0.0	0.0
Courier and messenger services, except air mail.....	30	1602	4.7	0.3	0.4	0.6	0.5	0.3
Air mail and package delivery services, excluding by USPS.....	30	1603	6.4	-0.5	0.5	0.6	-0.7	1.2
Pipeline transportation ²	30	17	1.3	0.0	1.5	0.1	0.0	0.7
Transportation of passengers (partial).....	30	2	-3.7	1.7	-3.6	-3.9	0.4	-0.2
Services related to water transportation ²	31	1	5.5	0.5	0.3	0.3	-0.1	0.3
Arrangement of freight and cargo ²	31	31	17.4	-4.0	3.7	9.5	-0.8	-0.9
Warehousing, storage, and related services ²	32	1	1.0	1.0	1.5	-0.7	-2.7	-0.8
Services less trade, transportation, and warehousing for intermediate demand.....	ID6	31	3.9	0.3	0.4	0.1	0.3	0.3
Network compensation from broadcast TV, cable TV, radio ²	35	-	0.8	0.0	0.0	0.0	0.5	0.0
Advertising space sales in periodicals and newspapers ²	36	11	-1.0	0.1	0.4	-0.5	0.0	0.0
Advertising space sales in directories and mail lists ²	36	12	0.1	0.0	0.0	0.0	0.0	0.0
Television advertising time sales.....	36	2	-5.3	-6.1	1.7	-0.2	-1.4	0.1
Radio advertising time sales.....	36	3	-8.6	0.4	0.3	4.2	-2.6	-8.5
Internet advertising sales ²	36	6	14.7	0.0	7.9	0.0	0.0	0.8
Business wired telecommunication services ²	37	12	5.4	1.0	1.5	1.1	-0.1	0.5
Wireless telecommunication services.....	37	2	1.6	0.1	0.1	0.9	0.1	0.1
Cable and satellite subscriber services.....	37	3	4.9	-1.1	1.4	0.7	0.5	0.7
Bundled wired telecommunication access services ²	37	5	4.6	-0.2	3.0	-0.5	-0.3	0.7
Data processing and related services ²	38	1	1.6	-0.3	0.4	0.4	-0.5	0.2
Business loans (partial).....	39	11	-2.0	0.1	0.0	-0.6	0.2	-2.0

See footnotes at end of table.

Table 2. Producer price index percentage changes for selected commodity groupings by Final Demand-Intermediate Demand category, seasonally adjusted — Continued
 [July 2024]

Grouping	Commodity code		Unadjusted 12-month percent change ¹	Seasonally adjusted 1-month percent change ¹				
	Group code	Item code		July 2023 to July 2024 ^P	Feb. to Mar.	Mar. to Apr. ^P	Apr. to May ^P	May to June ^P
Deposit services (partial) ²	39	2	19.4	2.7	-0.2	0.4	4.7	0.4
Other credit intermediation, incl. trust services (partial) ²	39	3	-2.6	0.0	-3.4	0.8	0.0	0.1
Securities brokerage, dealing, investment advice, and related services ²	40	1	9.0	2.5	-0.1	-0.2	1.5	1.8
Portfolio management ²	40	2	12.5	0.7	4.2	-0.7	0.6	2.3
Investment banking ²	40	3	15.6	4.5	-0.4	1.5	1.3	0.9
Life insurance ²	41	1101	-1.5	-0.7	-0.1	0.3	0.0	0.0
Health and medical insurance.....	41	1103	4.6	0.3	0.1	0.2	0.2	0.1
Property and casualty insurance ²	41	1104	5.5	0.4	0.2	0.8	0.2	0.2
Annuities ²	41	2	2.2	0.0	2.2	-0.2	0.0	0.0
Commissions from sales of insurance ²	42	1	2.8	0.0	0.0	0.0	0.0	0.9
Nonresidential real estate rents ²	43	11	5.1	0.0	0.3	-0.9	1.7	1.6
Nonresidential property sales and leases ²	43	12	-2.0	0.0	0.3	-0.2	-0.4	1.7
Residential property management fees ²	43	22	4.2	0.0	0.4	0.0	0.8	0.1
Passenger car rental.....	44	1	3.5	4.7	-0.6	-0.9	4.5	0.7
Truck, utility trailer, and RV rental and leasing ²	44	2	0.6	0.6	1.3	-0.1	0.1	-0.1
Construction, mining, and forestry machinery and equipment rental and leasing ²	44	3	-0.4	1.4	-0.2	-0.7	0.6	-0.3
Legal services.....	45	1	7.8	0.1	1.6	0.3	0.1	0.5
Accounting services (partial).....	45	2	2.6	-0.7	-0.9	0.9	-1.7	0.6
Architectural and engineering services.....	45	3	2.4	0.0	0.7	0.2	0.3	-0.1
Management, scientific, and technical consulting services ²	45	4	3.3	0.3	0.9	0.6	-0.2	0.1
Advertising and related services (partial) ²	45	5	0.1	0.1	0.0	0.3	-0.3	0.0
Permanent placement services ²	46	1	0.5	0.0	0.1	0.6	-0.1	-0.1
Executive search services ²	46	2	6.9	-1.4	1.4	-2.0	3.4	-0.2
Staffing services.....	46	3	-0.2	0.0	-0.3	0.1	-0.4	0.0
Security guard services ²	48	1	9.7	-0.1	0.2	-0.1	0.5	0.1
Janitorial services ²	49	1	2.0	0.1	1.1	0.6	0.1	0.2
Waste collection.....	50	1	5.9	1.3	1.0	2.5	0.4	-0.1
Traveler accommodation services.....	53	11	0.7	-2.3	3.2	3.1	-0.5	-0.4
Commercial and industrial machinery and equipment repair and maintenance.....	55	1	6.3	-0.3	1.3	1.2	0.3	-0.1
Aircraft repair and maintenance.....	55	4	9.6	0.8	0.7	0.7	0.2	0.1
Metal treatment services ²	59	1	2.6	0.0	0.3	-0.2	0.1	-0.2
Construction for intermediate demand.....	ID6	4	4.3	0.6	2.9	0.0	0.1	0.1
Maintenance and repair of non-residential buildings (partial) ²	80	2	4.3	0.6	2.9	0.0	0.1	0.1
Intermediate Demand by Production Flow								
Stage 4 intermediate demand.....	ID5	4	2.4	0.1	0.4	-0.1	0.0	0.4
Stage 4 intermediate demand goods.....	ID5	9411	0.6	-0.3	0.4	-0.3	-0.2	0.2
Grains.....	01	2	-27.9	2.6	-4.0	8.0	-1.9	-6.2
Meats.....	02	21	6.0	0.5	-2.1	-0.5	0.1	4.5
Unprocessed and packaged fish.....	02	23	-3.8	2.0	1.9	-0.7	-5.2	0.0
Dairy products ²	02	3	9.4	1.0	-0.1	2.0	1.6	1.2
Commercial electric power.....	05	42	3.0	0.8	1.2	-0.8	0.7	-1.2
Industrial electric power.....	05	43	1.1	-0.3	1.3	-2.5	1.2	-0.9
Gasoline.....	05	71	-4.9	-3.0	4.5	-7.3	-5.4	2.8
No. 2 diesel fuel.....	05	7303	6.7	1.8	2.8	-23.7	-3.1	12.9
Basic organic chemicals.....	06	14	1.1	0.2	1.5	-1.4	-0.2	3.1
Prepared paint ²	06	21	-0.5	-0.1	-0.2	0.1	0.1	0.1
Medicinal and botanical chemicals ²	06	31	5.1	0.1	0.2	0.0	-0.2	0.1
Biological products, including diagnostics.....	06	37	0.9	0.5	1.8	-0.1	-0.6	-0.3
Pharmaceutical preparations.....	06	38	1.2	0.0	0.2	0.2	0.0	0.1
Plastic construction products ²	07	21	0.0	0.0	0.6	-0.3	-0.2	0.1
Unsupported plastic film, sheet, and other shapes ²	07	22	-0.1	0.1	0.8	0.5	-0.1	0.2
Parts for manufacturing from plastics ²	07	26	0.0	0.6	0.0	0.0	0.0	0.0
Plastic packaging products ²	07	2A	-0.3	0.3	0.6	-0.3	0.1	-0.5
Lumber.....	08	1	-9.1	0.5	4.0	-2.6	2.0	-0.4
Millwork.....	08	2	-0.1	-0.7	0.3	-0.6	0.2	-0.4
Paper boxes and containers ²	09	1503	0.1	-0.4	0.6	0.8	0.2	0.5
Commercial printing ²	09	47	2.1	0.2	-0.2	0.1	0.0	0.4
Steel mill products ²	10	17	-14.0	-8.1	-2.7	0.3	-1.8	-3.3
Nonferrous wire and cable ²	10	26	8.3	0.2	3.8	5.4	0.1	-1.6
Fabricated structural metal products.....	10	7	-1.0	-3.3	-0.3	0.0	-0.7	0.1
Other miscellaneous metal products ²	10	89	2.2	0.1	0.3	0.8	0.3	0.0
Air conditioning and refrigeration equipment.....	11	48	2.2	-0.8	0.9	0.7	-0.7	0.1
Wiring devices ²	11	71	0.2	-0.1	-0.2	0.3	0.0	-0.1

See footnotes at end of table.

Table 2. Producer price index percentage changes for selected commodity groupings by Final Demand-Intermediate Demand category, seasonally adjusted — Continued
 [July 2024]

Grouping	Commodity code		Unadjusted 12-month percent change ¹	Seasonally adjusted 1-month percent change ¹				
	Group code	Item code		July 2023 to July 2024 ^P	Feb. to Mar.	Mar. to Apr. ^P	Apr. to May ^P	May to June ^P
Electronic components and accessories.....	11	78	0.6	0.0	0.3	-0.1	-0.7	0.0
Miscellaneous electrical machinery and equipment ²	11	79	0.6	0.0	0.0	0.0	0.1	0.0
Internal combustion engines ²	11	94	3.2	0.0	0.4	0.1	0.0	0.6
Machine shop products ²	11	95	1.2	0.1	-0.1	0.1	0.0	0.2
Concrete ingredients and related products.....	13	2	7.1	0.6	0.3	0.2	0.1	0.4
Concrete products.....	13	3	4.6	0.9	-0.7	0.2	0.1	0.0
Prepared asphalt, tar roofing and siding products ²	13	61	1.2	0.1	-2.1	2.7	-0.7	0.4
Paving mixtures and blocks.....	13	94	4.4	1.0	0.0	-1.2	-0.1	0.5
Motor vehicle parts ²	14	12	1.1	0.2	0.1	0.0	0.1	0.2
Aircraft engines and engine parts.....	14	23	4.0	0.1	0.1	0.3	0.2	0.3
Aircraft parts and auxiliary equipment, n.e.c.....	14	25	3.3	0.1	1.2	0.1	0.3	0.4
Medical, surgical and personal aid devices.....	15	6	2.7	0.2	0.4	0.1	0.2	0.0
Stage 4 intermediate demand services.....	ID5	9412	3.9	0.4	0.4	0.1	0.1	0.5
Truck transportation of freight ²	30	12	1.6	-0.5	0.6	0.2	-0.3	0.6
Courier, messenger, and U.S. postal services.....	30	16	4.6	0.0	0.3	0.4	0.0	0.4
Airline passenger services.....	30	22	1.8	1.8	-3.6	-3.9	0.4	-0.2
Warehousing, storage, and related services ²	32	1	1.0	1.0	1.5	-0.7	-2.7	-0.8
Advertising space sales in periodicals and newspapers ²	36	11	-1.0	0.1	0.4	-0.5	0.0	0.0
Data processing and related services ²	38	1	1.6	-0.3	0.4	0.4	-0.5	0.2
Business loans (partial).....	39	11	-2.0	0.1	0.0	-0.6	0.2	-2.0
Deposit services (partial) ²	39	2	19.4	2.7	-0.2	0.4	4.7	0.4
Securities brokerage, dealing, investment advice, and related services ²	40	1	9.0	2.5	-0.1	-0.2	1.5	1.8
Portfolio management ²	40	2	12.5	0.7	4.2	-0.7	0.6	2.3
Investment banking ²	40	3	15.6	4.5	-0.4	1.5	1.3	0.9
Insurance.....	41	11	3.7	0.2	0.2	0.5	0.0	0.0
Annuities ²	41	2	2.2	0.0	2.2	-0.2	0.0	0.0
Nonresidential real estate rents ²	43	11	5.1	0.0	0.3	-0.9	1.7	1.6
Nonresidential property sales and leases ²	43	12	-2.0	0.0	0.3	-0.2	-0.4	1.7
Nonresidential property management fees ²	43	13	6.4	-0.1	0.9	-0.1	2.5	0.7
Residential property management fees ²	43	22	4.2	0.0	0.4	0.0	0.8	0.1
Construction, mining, and forestry machinery and equipment rental and leasing ²	44	3	-0.4	1.4	-0.2	-0.7	0.6	-0.3
Legal services.....	45	1	7.8	0.1	1.6	0.3	0.1	0.5
Advertising agency services ²	45	51	0.1	0.1	0.0	0.3	-0.3	0.0
Accounting services (partial).....	45	2	2.6	-0.7	-0.9	0.9	-1.7	0.6
Architectural and engineering services.....	45	3	2.4	0.0	0.7	0.2	0.3	-0.1
Management, scientific, and technical consulting services ²	45	4	3.3	0.3	0.9	0.6	-0.2	0.1
Staffing services.....	46	3	-0.2	0.0	-0.3	0.1	-0.4	0.0
Janitorial services ²	49	1	2.0	0.1	1.1	0.6	0.1	0.2
Commercial and industrial machinery and equipment repair and maintenance.....	55	1	6.3	-0.3	1.3	1.2	0.3	-0.1
Machinery and equipment parts and supplies wholesaling ²	57	1102	4.8	-1.0	1.1	0.3	-2.9	1.5
Building materials, paint, and hardware wholesaling.....	57	3	-2.8	-1.7	0.3	-1.0	0.9	-0.5
Metals, minerals, and ores wholesaling ²	57	4	-6.6	2.7	-6.2	-2.0	-2.8	0.6
Chemicals and allied products wholesaling ²	57	5	2.0	-1.5	-0.2	2.0	-0.4	2.1
Paper and plastics products wholesaling ²	57	6	-2.0	-0.5	-0.8	-0.8	-0.5	0.3
Food and alcohol wholesaling ²	57	8	5.8	3.0	1.6	-0.2	1.6	0.2
Hardware and building materials and supplies retailing.....	58	D	4.4	-2.2	1.6	-1.1	1.0	0.4
Metal treatment services ²	59	1	2.6	0.0	0.3	-0.2	0.1	-0.2
Stage 3 intermediate demand.....	ID5	3	2.2	-0.1	0.2	-0.3	-0.2	0.8
Stage 3 intermediate demand goods.....	ID5	9311	1.8	-0.3	0.2	-1.3	-0.4	1.7
Slaughter cattle.....	01	31	11.5	7.7	-2.5	5.6	-1.3	3.9
Slaughter hogs.....	01	32	-8.4	4.6	22.4	-10.8	-14.9	1.6
Slaughter poultry.....	01	4	4.4	-3.5	-6.1	-1.3	1.2	8.6
Raw milk.....	01	6	37.8	0.1	-2.3	9.9	5.0	7.6
Commercial electric power.....	05	42	3.0	0.8	1.2	-0.8	0.7	-1.2
Industrial electric power.....	05	43	1.1	-0.3	1.3	-2.5	1.2	-0.9
Gasoline.....	05	71	-4.9	-3.0	4.5	-7.3	-5.4	2.8
Jet fuel ²	05	7203	5.7	-5.4	0.3	-6.2	-4.6	7.1
No. 2 diesel fuel.....	05	7303	6.7	1.8	2.8	-23.7	-3.1	12.9
Finished lubricants ²	05	76	-1.3	-0.9	0.0	0.0	-0.1	-0.1
Lubricating oil base stocks ²	05	78	8.6	-4.7	3.2	4.4	5.4	-2.9
Asphalt.....	05	8102	4.0	8.8	-4.6	3.9	-3.0	-3.1
Basic inorganic chemicals ²	06	13	-5.2	0.2	-0.1	0.9	0.2	-0.9
Basic organic chemicals.....	06	14	1.1	0.2	1.5	-1.4	-0.2	3.1
Paints and allied products ²	06	2	-1.2	0.0	-0.2	-0.2	-0.2	0.0

See footnotes at end of table.

Table 2. Producer price index percentage changes for selected commodity groupings by Final Demand-Intermediate Demand category, seasonally adjusted — Continued
 [July 2024]

Grouping	Commodity code		Unadjusted 12-month percent change ¹	Seasonally adjusted 1-month percent change ¹				
	Group code	Item code		July 2023 to July 2024 ^P	Feb. to Mar.	Mar. to Apr. ^P	Apr. to May ^P	May to June ^P
Agricultural chemicals and chemical products.....	06	5	1.5	0.0	-0.2	-1.4	0.6	0.6
Plastic resins and materials.....	06	6	0.4	-2.0	1.2	-0.6	-0.5	1.4
Synthetic rubber ²	07	1102	13.1	3.2	4.6	2.0	1.6	-0.6
Unsupported plastic film, sheet, and other shapes ²	07	22	-0.1	0.1	0.8	0.5	-0.1	0.2
Paper ²	09	13	0.9	-0.2	0.4	0.6	-0.2	0.1
Paperboard ²	09	14	0.3	0.2	0.5	0.3	0.3	0.4
Converted paper and paperboard products ²	09	15	-0.4	-0.3	0.5	0.5	0.1	0.3
Commercial printing ²	09	47	2.1	0.2	-0.2	0.1	0.0	0.4
Foundry and forge shop products ²	10	15	0.6	0.4	-0.3	-1.0	0.8	-1.0
Steel mill products ²	10	17	-14.0	-8.1	-2.7	0.3	-1.8	-3.3
Nonferrous mill shapes ²	10	25	6.5	0.2	1.8	3.8	2.0	0.0
Nonferrous foundry shop products.....	10	28	4.9	1.1	-0.3	1.0	0.8	0.2
Metal containers ²	10	3	-1.5	-0.4	-0.1	0.2	0.3	1.1
Structural, architectural, and pre-engineered metal products.....	10	74	-5.3	-7.7	-0.4	0.3	-1.3	0.1
Bolts, nuts, screws, rivets, and washers ²	10	81	8.0	0.4	1.0	0.0	0.0	0.0
Other miscellaneous metal products ²	10	89	2.2	0.1	0.3	0.8	0.3	0.0
General purpose machinery and equipment.....	11	4	3.2	0.2	0.4	0.3	0.1	-0.1
Electrical machinery and equipment.....	11	7	2.4	0.2	0.0	0.1	0.0	0.1
Construction sand, gravel, and crushed stone.....	13	21	7.4	0.3	0.5	0.0	0.1	0.5
Cement.....	13	22	6.3	1.4	-0.3	0.7	0.2	0.2
Motor vehicle parts ²	14	12	1.1	0.2	0.1	0.0	0.1	0.2
Aircraft and aircraft equipment.....	14	2	3.8	0.1	0.3	0.1	0.2	0.3
Stage 3 intermediate demand services.....	ID5	9312	2.4	0.0	0.2	0.5	-0.1	0.1
Rail transportation of freight and mail ²	30	11	3.9	-0.1	0.9	0.2	0.0	0.6
Courier, messenger, and U.S. postal services.....	30	16	4.6	0.0	0.3	0.4	0.0	0.4
Arrangement of freight and cargo ²	31	31	17.4	-4.0	3.7	9.5	-0.8	-0.9
Freight forwarding ²	31	3201	-2.1	0.0	0.0	0.7	0.0	0.0
Warehousing, storage, and related services ²	32	1	1.0	1.0	1.5	-0.7	-2.7	-0.8
Advertising space sales in periodicals, newspapers, directories, and mailing lists ²	36	1	-0.9	0.0	0.4	-0.4	0.0	0.0
Wired telephone services ²	37	1	5.1	1.3	1.5	0.9	-0.1	0.2
Bundled wired telecommunications access services ²	37	5	4.6	-0.2	3.0	-0.5	-0.3	0.7
Data processing and related services ²	38	1	1.6	-0.3	0.4	0.4	-0.5	0.2
Business loans (partial).....	39	11	-2.0	0.1	0.0	-0.6	0.2	-2.0
Deposit services (partial) ²	39	2	19.4	2.7	-0.2	0.4	4.7	0.4
Securities brokerage, dealing, investment advice, and related services ²	40	1	9.0	2.5	-0.1	-0.2	1.5	1.8
Insurance.....	41	11	3.7	0.2	0.2	0.5	0.0	0.0
Nonresidential real estate rents ²	43	11	5.1	0.0	0.3	-0.9	1.7	1.6
Legal services.....	45	1	7.8	0.1	1.6	0.3	0.1	0.5
Accounting services (partial).....	45	2	2.6	-0.7	-0.9	0.9	-1.7	0.6
Architectural and engineering services.....	45	3	2.4	0.0	0.7	0.2	0.3	-0.1
Management, scientific, and technical consulting services ²	45	4	3.3	0.3	0.9	0.6	-0.2	0.1
Advertising agency services ²	45	51	0.1	0.1	0.0	0.3	-0.3	0.0
Staffing services.....	46	3	-0.2	0.0	-0.3	0.1	-0.4	0.0
Aircraft repair maintenance.....	55	4	9.6	0.8	0.7	0.7	0.2	0.1
Machinery and equipment parts and supplies wholesaling ²	57	1102	4.8	-1.0	1.1	0.3	-2.9	1.5
Building materials, paint, and hardware wholesaling.....	57	3	-2.8	-1.7	0.3	-1.0	0.9	-0.5
Metals, minerals, and ores wholesaling ²	57	4	-6.6	2.7	-6.2	-2.0	-2.8	0.6
Chemicals and allied products wholesaling ²	57	5	2.0	-1.5	-0.2	2.0	-0.4	2.1
Paper and plastics products wholesaling ²	57	6	-2.0	-0.5	-0.8	-0.8	-0.5	0.3
Food wholesaling ²	57	8101	5.9	2.8	1.8	-0.1	1.8	0.3
Metal treatment services ²	59	1	2.6	0.0	0.3	-0.2	0.1	-0.2
Stage 2 intermediate demand.....	ID5	2	2.8	-0.9	1.4	-0.3	0.7	1.1
Stage 2 intermediate demand goods.....	ID5	9211	2.2	-2.5	2.8	-1.3	1.4	2.8
Corn.....	01	2202	-28.3	4.1	-4.9	6.7	0.0	-5.4
Oilseeds.....	01	83	-21.7	0.4	-0.9	4.7	-3.1	-2.0
Prepared animal feeds.....	02	9	-7.6	-1.7	-0.4	0.2	0.7	0.2
Coal ²	05	1	8.1	-3.7	-0.7	1.6	2.0	0.3
Natural gas ²	05	31	0.1	-36.5	-4.9	17.4	29.4	13.3
Liquefied petroleum gas ²	05	32	1.9	0.1	6.3	-3.5	-4.2	0.4
Crude petroleum ²	05	61	10.4	1.7	8.5	-7.3	-0.1	5.5
No. 2 diesel fuel.....	05	7303	6.7	1.8	2.8	-23.7	-3.1	12.9
Industrial chemicals.....	06	1	-0.1	0.2	1.2	-1.0	-0.1	2.4
Plastic resins and materials.....	06	6	0.4	-2.0	1.2	-0.6	-0.5	1.4
Plastic products ²	07	2	0.0	0.3	0.5	-0.3	-0.1	-0.1
Logs, bolts, timber, pulpwood, and wood chips ²	08	5	-3.0	-0.2	-1.7	-0.2	0.1	0.4

See footnotes at end of table.

Table 2. Producer price index percentage changes for selected commodity groupings by Final Demand-Intermediate Demand category, seasonally adjusted — Continued
 [July 2024]

Grouping	Commodity code		Unadjusted 12-month percent change ¹	Seasonally adjusted 1-month percent change ¹				
	Group code	Item code		July 2023 to July 2024 ^P	Feb. to Mar.	Mar. to Apr. ^P	Apr. to May ^P	May to June ^P
Paper ²	09	13	0.9	-0.2	0.4	0.6	-0.2	0.1
Paperboard, excluding corrugated paperboard ²	09	1411	0.0	0.2	0.6	0.3	0.3	0.5
Commercial printing ²	09	47	2.1	0.2	-0.2	0.1	0.0	0.4
Iron and steel scrap.....	10	12	-0.9	-14.1	1.6	2.8	0.1	7.9
Steel mill products ²	10	17	-14.0	-8.1	-2.7	0.3	-1.8	-3.3
Nonferrous mill shapes ²	10	25	6.5	0.2	1.8	3.8	2.0	0.0
Electrical machinery and equipment.....	11	7	2.4	0.2	0.0	0.1	0.0	0.1
Electronic components and accessories.....	11	78	0.6	0.0	0.3	-0.1	-0.7	0.0
Stage 2 intermediate demand services.....	ID5	9212	3.2	0.1	0.3	0.5	0.3	-0.1
Rail transportation of freight and mail ²	30	11	3.9	-0.1	0.9	0.2	0.0	0.6
Truck transportation of freight ²	30	12	1.6	-0.5	0.6	0.2	-0.3	0.6
U.S. Postal Service ²	30	1601	3.2	0.0	0.0	0.0	0.0	0.0
Courier and messenger services, except air.....	30	1602	4.7	0.3	0.4	0.6	0.5	0.3
Air mail and package delivery services, excluding by USPS.....	30	1603	6.4	-0.5	0.5	0.6	-0.7	1.2
Pipeline transportation ²	30	17	1.3	0.0	1.5	0.1	0.0	0.7
Airline passenger services.....	30	22	-3.8	1.8	-3.6	-3.9	0.4	-0.2
Arrangement of freight and cargo ²	31	31	17.4	-4.0	3.7	9.5	-0.8	-0.9
Television advertising time sales.....	36	21	-5.3	-6.1	1.7	-0.2	-1.4	0.1
Wireless telecommunication services.....	37	2	1.6	0.1	0.1	0.9	0.1	0.1
Data processing and related services ²	38	1	1.6	-0.3	0.4	0.4	-0.5	0.2
Securities brokerage, dealing, investment advice, and related services ²	40	1	9.0	2.5	-0.1	-0.2	1.5	1.8
Portfolio management ²	40	2	12.5	0.7	4.2	-0.7	0.6	2.3
Investment banking ²	40	31	15.6	4.5	-0.4	1.5	1.3	0.9
Insurance.....	41	11	3.7	0.2	0.2	0.5	0.0	0.0
Commissions from sales of insurance ²	42	11	2.8	0.0	0.0	0.0	0.0	0.9
Legal services.....	45	1	7.8	0.1	1.6	0.3	0.1	0.5
Accounting services (partial).....	45	2	2.6	-0.7	-0.9	0.9	-1.7	0.6
Management, scientific, and technical consulting services ²	45	4	3.3	0.3	0.9	0.6	-0.2	0.1
Advertising agency services ²	45	51	0.1	0.1	0.0	0.3	-0.3	0.0
Staffing services.....	46	3	-0.2	0.0	-0.3	0.1	-0.4	0.0
Security guard services ²	48	1	9.7	-0.1	0.2	-0.1	0.5	0.1
Janitorial services ²	49	1	2.0	0.1	1.1	0.6	0.1	0.2
Traveler accommodation services.....	53	1	0.7	-2.3	3.2	3.1	-0.5	-0.4
Commercial and industrial machinery and equipment repair and maintenance.....	55	1	6.3	-0.3	1.3	1.2	0.3	-0.1
Hardware and building materials and supplies retailing.....	58	D	4.4	-2.2	1.6	-1.1	1.0	0.4
Stage 1 intermediate demand.....	ID5	1	1.6	-0.3	0.3	-0.7	0.0	0.7
Stage 1 intermediate demand goods.....	ID5	9111	0.0	-0.9	0.5	-1.6	-0.3	0.8
Prepared animal feeds.....	02	9	-7.6	-1.7	-0.4	0.2	0.7	0.2
Commercial electric power.....	05	42	3.0	0.8	1.2	-0.8	0.7	-1.2
Industrial electric power.....	05	43	1.1	-0.3	1.3	-2.5	1.2	-0.9
Commercial natural gas.....	05	52	0.5	0.4	-3.1	-4.0	2.4	0.0
Industrial natural gas.....	05	53	-3.7	-0.4	-3.4	-3.6	0.8	2.8
Gasoline.....	05	71	-4.9	-3.0	4.5	-7.3	-5.4	2.8
No. 2 diesel fuel.....	05	7303	6.7	1.8	2.8	-23.7	-3.1	12.9
Industrial chemicals.....	06	1	-0.1	0.2	1.2	-1.0	-0.1	2.4
Prepared paint ²	06	21	-0.5	-0.1	-0.2	0.1	0.1	0.1
Plastic construction products ²	07	21	0.0	0.0	0.6	-0.3	-0.2	0.1
Recyclable paper ²	09	12	83.9	11.4	-0.6	2.0	0.7	0.1
Paper ²	09	13	0.9	-0.2	0.4	0.6	-0.2	0.1
Converted paper and paperboard products ²	09	15	-0.4	-0.3	0.5	0.5	0.1	0.3
Iron and steel scrap.....	10	12	-0.9	-14.1	1.6	2.8	0.1	7.9
Steel mill products ²	10	17	-14.0	-8.1	-2.7	0.3	-1.8	-3.3
Primary nonferrous metals ²	10	22	8.4	1.1	3.8	5.0	0.8	-0.3
Nonferrous scrap.....	10	23	14.3	3.8	3.6	8.7	1.0	0.5
Nonferrous wire and cable ²	10	26	8.3	0.2	3.8	5.4	0.1	-1.6
Fabricated structural metal products.....	10	7	-1.0	-3.3	-0.3	0.0	-0.7	0.1
General purpose machinery and equipment.....	11	4	3.2	0.2	0.4	0.3	0.1	-0.1
Construction sand, gravel, and crushed stone.....	13	21	7.4	0.3	0.5	0.0	0.1	0.5
Stage 1 intermediate demand services.....	ID5	9112	3.3	0.3	0.1	0.2	0.3	0.5
Truck transportation of freight ²	30	12	1.6	-0.5	0.6	0.2	-0.3	0.6
Airline passenger services.....	30	22	-3.8	1.8	-3.6	-3.9	0.4	-0.2
Advertising space sales in periodicals, newspapers, directories, and mailing lists ²	36	1	-0.9	0.0	0.4	-0.4	0.0	0.0
Business wired telecommunication services ²	37	12	5.4	1.0	1.5	1.1	-0.1	0.5
Wireless telecommunication services.....	37	2	1.6	0.1	0.1	0.9	0.1	0.1

See footnotes at end of table.

Table 2. Producer price index percentage changes for selected commodity groupings by Final Demand-Intermediate Demand category, seasonally adjusted — Continued
 [July 2024]

Grouping	Commodity code		Unadjusted 12-month percent change ¹	Seasonally adjusted 1-month percent change ¹				
	Group code	Item code		July 2023 to July 2024 ^p	Feb. to Mar.	Mar. to Apr. ^p	Apr. to May ^p	May to June ^p
Bundled wired telecommunications access services ²	37	5	4.6	-0.2	3.0	-0.5	-0.3	0.7
Business loans (partial).....	39	11	-2.0	0.1	0.0	-0.6	0.2	-2.0
Deposit services (partial) ²	39	2	19.4	2.7	-0.2	0.4	4.7	0.4
Securities brokerage, dealing, investment advice, and related services ²	40	1	9.0	2.5	-0.1	-0.2	1.5	1.8
Portfolio management ²	40	2	12.5	0.7	4.2	-0.7	0.6	2.3
Investment banking ²	40	3	15.6	4.5	-0.4	1.5	1.3	0.9
Insurance.....	41	11	3.7	0.2	0.2	0.5	0.0	0.0
Nonresidential real estate rents ²	43	11	5.1	0.0	0.3	-0.9	1.7	1.6
Architectural and engineering services.....	45	3	2.4	0.0	0.7	0.2	0.3	-0.1
Management consulting services ²	45	41	3.3	0.3	0.9	0.6	-0.2	0.1
Waste collection.....	50	1	5.9	1.3	1.0	2.5	0.4	-0.1
Traveler accommodation services.....	53	11	0.7	-2.3	3.2	3.1	-0.5	-0.4
Commercial and industrial machinery and equipment repair and maintenance.....	55	1	6.3	-0.3	1.3	1.2	0.3	-0.1
Machinery and equipment parts and supplies wholesaling ²	57	1102	4.8	-1.0	1.1	0.3	-2.9	1.5
Building materials, paint, and hardware wholesaling.....	57	3	-2.8	-1.7	0.3	-1.0	0.9	-0.5
Metals, minerals, and ores wholesaling ²	57	4	-6.6	2.7	-6.2	-2.0	-2.8	0.6
Chemicals and allied products wholesaling ²	57	5	2.0	-1.5	-0.2	2.0	-0.4	2.1
Paper and plastics products wholesaling ²	57	6	-2.0	-0.5	-0.8	-0.8	-0.5	0.3
Hardware and building materials and supplies retailing.....	58	D	4.4	-2.2	1.6	-1.1	1.0	0.4
Mining services ²	60	1	2.6	-0.9	1.3	0.0	0.1	-0.2

¹ All indexes are subject to revision for 4 months after their originally scheduled publication to incorporate late reports and corrections by survey respondents. In addition, seasonally adjusted indexes are subject to change for up to 5 years due to the recalculation of seasonal factors published each January.

² Seasonal tests did not indicate the presence of seasonality. Data shown is not seasonally adjusted.

³ Trade indexes measure changes in margins received by wholesalers and retailers.

p Preliminary

"-" Data not available.

NOTE: The term "(partial)" denotes incomplete coverage of the index category.

Table 3. Producer price indexes for Final Demand-Intermediate Demand groupings, seasonally adjusted
 [July 2024, Index base Nov. 2009=100, unless otherwise indicated]

Grouping	Other index base	Commodity code		Seasonally adjusted index ¹				
		Group code	Item code	Mar. 2024	Apr. 2024 ^P	May 2024 ^P	June 2024 ^P	July 2024 ^P
Final Demand								
Final demand.....		FD	4	143.535	144.247	144.266	144.531	144.673
Final demand goods.....		FD	41	144.051	144.572	143.424	142.904	143.788
Final demand foods.....		FD	411	152.295	151.155	150.929	151.110	152.034
Finished consumer foods ²	00/82	FD	4111	273.063	271.081	269.732	270.726	272.371
Finished consumer foods, crude.....	00/82	FD	411113	283.809	271.187	250.853	262.746	256.054
Finished consumer foods, processed.....	00/82	FD	411112	270.854	269.895	270.361	270.319	272.747
Government purchased foods.....		FD	4112	157.852	156.787	156.849	157.649	160.545
Foods for export.....		FD	4113	141.465	140.194	142.298	140.477	140.555
Final demand energy.....		FD	412	142.137	144.647	137.952	134.995	137.566
Finished consumer energy goods ²	00/82	FD	4121	222.937	227.070	218.251	213.327	216.059
Government purchased energy.....		FD	4122	152.345	154.397	141.638	138.961	144.776
Energy for export.....		FD	4123	131.274	133.484	126.513	124.816	130.235
Final demand goods less foods and energy.....		FD	413	142.460	142.825	143.152	143.194	143.541
Finished goods less foods and energy ²	00/82	FD	4131	251.479	251.840	252.403	252.567	252.904
Finished consumer goods less foods and energy.....	00/82	FD	41311	278.528	278.932	279.810	279.890	280.207
Nondurable consumer goods less foods and energy.....	00/82	FD	413111	362.288	362.972	364.840	364.980	365.344
Durable consumer goods.....	00/82	FD	413112	192.817	192.967	192.977	193.003	193.263
Private capital equipment.....	00/82	FD	41312	216.735	217.042	217.304	217.534	217.874
Private capital equipment for manufacturing industries.....	00/82	FD	413121	234.215	234.517	235.278	235.532	235.983
Private capital equipment for nonmanufacturing industries.....	00/82	FD	413122	211.513	211.821	211.936	212.158	212.465
Government purchased goods, excluding foods and energy.....		FD	4132	139.040	139.412	139.375	139.438	139.878
Government purchased goods excluding foods, energy, and capital equipment.....		FD	41321	146.758	147.254	147.068	146.982	147.526
Government purchased capital equipment.....		FD	41322	127.224	127.441	127.583	127.823	128.129
Goods for export, excluding foods and energy.....		FD	4133	137.597	138.225	138.668	138.615	139.189
Final demand services.....		FD	42	142.189	143.001	143.544	144.152	143.920
Final demand trade services ³		FD	423	150.327	151.125	152.224	154.315	152.300
Trade of finished goods ²		FD	4231	148.249	148.755	150.189	152.235	150.146
Trade of personal consumption goods.....		FD	42311	148.549	147.930	150.456	151.860	150.077
Trade of private capital equipment.....		FD	42312	145.235	150.718	147.300	152.227	148.781
Trade of government purchased goods.....		FD	4232	164.098	167.143	165.924	169.203	166.955
Trade of government purchased goods, excluding capital equipment.....		FD	42321	170.623	170.659	172.414	173.294	172.810
Trade of government purchased capital equipment.....		FD	42322	152.774	160.286	154.635	161.583	156.637
Trade of exports.....		FD	4233	164.677	167.378	166.186	168.238	167.014
Final demand transportation and warehousing services.....		FD	422	151.284	150.543	149.268	149.178	149.727
Transportation of passengers for final demand.....		FD	4221	142.908	137.821	132.448	132.980	132.778
Transportation of private passengers.....		FD	42211	142.895	137.818	132.456	132.987	132.785
Transportation of government passengers.....		FD	42212	142.608	137.577	132.263	132.788	132.588
Transportation of passengers for export.....		FD	42213	142.974	137.843	132.423	132.962	132.757
Transportation and warehousing of goods for final demand.....		FD	4222	153.720	154.680	155.012	154.678	155.518
Transportation and warehousing of finished goods ²		FD	42221	151.455	152.377	152.664	152.325	153.176
Transportation and warehousing of personal consumption goods.....		FD	422211	152.099	153.017	153.308	152.975	153.814
Transportation and warehousing of private capital equipment.....		FD	422212	148.843	149.779	150.053	149.692	150.585
Transportation and warehousing of government purchased goods.....		FD	42222	153.079	154.218	154.358	153.781	154.313
Transportation and warehousing of exports.....		FD	42223	160.232	161.247	161.726	161.454	162.344
Final demand services less trade, transportation, and warehousing.....		FD	421	137.330	138.306	138.812	138.895	139.297
Finished services less trade, transportation, and warehousing ²		FD	4211	137.487	138.425	138.934	138.995	139.362
Finished consumer services less trade, transportation, and warehousing.....		FD	42111	137.075	137.944	138.428	138.475	138.843
Private capital investment services less trade, transportation, and warehousing.....		FD	42112	141.852	143.332	144.040	144.209	144.578
Government purchased services less trade, transportation, and warehousing.....		FD	4212	127.978	128.986	129.426	129.519	130.109
Gov. purchased services less trade, transportation, and warehousing, excl. capital investment.....		FD	42121	128.745	129.741	130.141	130.269	130.867
Government purchased capital investment services less trade, transportation, and warehousing.....		FD	42122	110.853	111.992	112.980	112.568	113.013
Services for export less trade, transportation, and warehousing.....		FD	4213	146.621	148.102	148.656	149.051	149.744
Final demand construction.....		FD	43	174.820	175.072	175.014	175.670	177.036
Construction for private capital investment.....		FD	431	178.907	178.928	178.930	179.684	180.870
Construction for government.....		FD	432	167.222	167.967	167.779	168.231	169.992
Final Demand Special Groupings								
Final demand less exports.....	04/10	FD	49101	141.288	141.965	141.988	142.271	142.356
Final demand less government.....	04/10	FD	49102	141.514	142.197	142.331	142.606	142.667
Final demand less foods, food and nonalcoholic beverages for immediate consumption, and energy ¹	04/10	FD	49103	141.605	142.260	142.728	143.230	143.134
Final demand less foods and energy ⁴	04/10	FD	49104	141.354	142.048	142.525	143.006	142.938
Final demand less foods and food and nonalcoholic beverages for immediate consumption ⁴	04/10	FD	49105	141.201	141.975	141.971	142.244	142.324

See footnotes at end of table.

Table 3. Producer price indexes for Final Demand-Intermediate Demand groupings, seasonally adjusted — Continued

[July 2024, Index base Nov. 2009=100, unless otherwise indicated]

Grouping	Other index base	Commodity code		Seasonally adjusted index ¹				
		Group code	Item code	Mar. 2024	Apr. 2024 ^P	May 2024 ^P	June 2024 ^P	July 2024 ^P
Final demand less foods ⁴	04/10	FD	49106	140.917	141.722	141.753	142.020	142.115
Final demand less energy.....	04/10	FD	49107	141.718	142.309	142.745	143.209	143.197
Final demand less trade services.....	01/10	FD	49108	140.257	140.942	140.724	140.589	141.198
Final demand less distributive services ⁵	01/10	FD	49109	139.847	140.521	140.279	140.153	140.752
Final demand goods less energy.....	01/10	FD	49111	143.087	143.121	143.324	143.396	143.865
Final demand goods less foods.....	04/10	FD	49112	139.212	140.068	138.753	138.097	138.953
Final demand services less trade services.....	04/10	FD	49113	137.433	138.240	138.575	138.641	139.054
Final demand distributive services ⁵	04/10	FD	49114	147.814	148.620	149.579	151.255	149.719
Final demand goods plus final demand distributive services ⁵	04/10	FD	49115	143.527	144.159	143.901	144.292	144.166
Final demand less foods, energy, and trade services ⁴	08/13	FD	49116	131.013	131.643	131.944	132.016	132.413
Private and government purchased capital equipment.....	08/13	FD	49117	130.880	131.070	131.227	131.381	131.601
Private and government purchased capital investment services.....	08/13	FD	49118	132.761	135.593	134.694	136.573	135.534
Total private and government purchased capital investment.....	08/13	FD	49119	134.902	136.413	136.015	137.086	136.814
Total finished ²	01/10	FD	49201	142.259	142.916	143.076	143.378	143.366
Total finished less foods, food and nonalcoholic beverages for immediate consumption, and energy ^{2, 4}	12/10	FD	49202	141.005	141.635	142.237	142.749	142.562
Total finished less foods and energy ^{2, 4}	01/10	FD	49203	141.881	142.512	143.107	143.624	143.440
Total finished less foods and food and nonalcoholic beverages for immediate consumption ^{2, 4}	12/10	FD	49204	140.227	140.976	141.192	141.475	141.408
Total finished less foods ^{2, 4}	01/10	FD	49205	141.660	142.413	142.623	142.912	142.848
Total finished less energy ²	01/10	FD	49206	142.515	143.050	143.570	144.089	143.967
Finished goods ²	00/82	FD	49207	258.081	258.978	256.647	255.627	256.893
Finished goods less energy ²	00/82	FD	49208	256.418	256.144	256.189	256.576	257.266
Finished goods, excluding foods ^{2, 4}	00/82	FD	49209	253.469	255.122	252.539	250.989	252.152
Finished services ²	01/10	FD	49210	140.360	141.085	141.744	142.335	142.044
Private capital investment services.....	04/10	FD	49211	142.783	145.719	144.860	146.773	145.746
Finished distributive services ^{2, 5}	04/10	FD	49212	145.581	146.126	147.393	149.110	147.418
Finished services less trade services ²	04/10	FD	49213	137.219	138.023	138.393	138.443	138.821
Finished services less distributive services ^{2, 5}	04/10	FD	49214	136.708	137.507	137.883	137.954	138.306
Total private capital investment (goods, services, and construction).....	04/10	FD	49215	142.800	144.426	144.032	145.172	144.823
Finished goods plus finished distributive services ²	04/10	FD	49216	144.687	145.209	145.146	145.671	145.228
Total exports.....	04/10	FD	49301	140.809	141.659	141.646	141.766	142.258
Goods for export.....	00/82	FD	49302	230.898	231.732	232.086	231.491	232.822
Services for export.....	04/10	FD	49303	153.950	155.331	155.016	155.793	155.904
Total government purchases.....	04/10	FD	49401	138.777	139.683	138.378	138.485	139.519
Government purchased goods.....	00/82	FD	49402	234.881	235.918	230.570	229.672	233.078
Government purchased services.....	04/10	FD	49403	135.868	137.054	137.067	137.645	137.763
Total government purchased capital investment (goods, services, construction).....	08/13	FD	49404	133.648	134.964	134.390	135.413	135.544
Government purchases, defense.....	05/15	FD	49405	125.545	126.338	124.958	124.960	125.882
Government purchases, non-defense.....	05/15	FD	49406	133.102	133.987	132.813	132.958	133.960
Personal consumption.....	01/10	FD	49501	142.053	142.488	142.775	142.891	142.951
Personal consumption goods (finished consumer goods).....	00/82	FD	49502	275.586	276.741	273.275	271.710	273.380
Personal consumption goods less energy.....	00/82	FD	49503	276.750	276.109	276.013	276.494	277.395
Personal consumption goods less foods.....	00/82	FD	49504	274.719	277.202	272.859	270.210	271.878
Personal consumption nondurable goods less foods.....	00/82	FD	49508	310.527	314.051	307.763	303.917	306.214
Personal consumption services.....	04/10	FD	49505	139.462	139.843	140.733	141.121	140.944
Personal consumption less trade services.....	04/10	FD	49506	139.832	140.528	140.256	140.052	140.570
Personal consumption less distributive services ⁵	04/10	FD	49507	139.625	140.314	140.022	139.822	140.329
Personal consumption less foods and energy.....	04/14	FD	49510	130.649	130.988	131.778	132.107	131.974
Personal consumption less foods, energy, and trade services ³	04/14	FD	49511	128.702	129.316	129.641	129.679	130.002
Personal consumption less foods, energy, and distributive services ⁵	04/14	FD	49512	128.769	129.375	129.704	129.757	130.062
Personal consumption goods plus personal consumption distributive services ⁵	08/13	FD	49509	133.168	133.245	133.447	133.614	133.347
Intermediate Demand by Commodity Type								
Processed goods								
Processed goods for intermediate demand.....	00/82	ID6	1	256.398	257.812	254.150	253.765	255.597
Materials and components for manufacturing.....	00/82	ID6	11	232.564	233.112	233.240	233.283	233.950
Materials for manufacturing.....		ID6	111	143.225	143.651	143.673	143.643	144.228
Materials for food manufacturing.....	00/82	ID6	1111	252.249	252.479	252.798	254.865	258.730
Materials for nondurable manufacturing.....	00/82	ID6	1112	260.249	262.342	260.815	260.442	263.935
Materials for durable manufacturing.....	00/82	ID6	1113	276.395	275.869	277.671	277.008	273.873
Components for manufacturing.....	00/82	ID6	112	189.819	190.080	190.304	190.456	190.636
Components for nondurable manufacturing.....		ID6	1121	146.228	146.885	147.289	147.238	147.189
Components for durable manufacturing.....		ID6	1122	134.031	134.194	134.341	134.456	134.592
Materials and components for construction.....	00/82	ID6	12	353.857	354.894	354.740	354.165	354.075
Materials for construction.....		ID6	121	170.056	170.759	170.097	169.963	169.823
Components for construction.....		ID6	122	178.388	178.737	179.158	178.748	178.784
Processed fuels and lubricants for intermediate demand.....	00/82	ID6	13	248.922	253.379	234.352	232.226	238.736
Processed fuels and lubricants to manufacturing industries.....	00/82	ID6	131	251.705	255.713	241.836	242.920	245.465

See footnotes at end of table.

Table 3. Producer price indexes for Final Demand-Intermediate Demand groupings, seasonally adjusted — Continued

[July 2024, Index base Nov. 2009=100, unless otherwise indicated]

Grouping	Other index base	Commodity code		Seasonally adjusted index ¹				
		Group code	Item code	Mar. 2024	Apr. 2024 ^P	May 2024 ^P	June 2024 ^P	July 2024 ^P
Processed fuels and lubricants to nonmanufacturing industries.....	00/82	ID6	132	248.336	252.939	232.259	229.123	236.891
Containers for intermediate demand.....	00/82	ID6	14	303.933	305.130	306.555	307.226	309.227
Supplies for intermediate demand.....	00/82	ID6	15	249.794	250.379	250.781	250.980	251.664
Supplies to manufacturing industries.....	00/82	ID6	151	247.524	248.542	249.468	249.903	249.920
Supplies to nonmanufacturing industries.....	00/82	ID6	152	248.163	248.677	248.994	249.155	249.937
Supplies to nonmanufacturing industries, feeds.....	00/82	ID6	1521	213.581	211.687	211.913	214.151	215.968
Supplies to nonmanufacturing industries, other than feeds.....	00/82	ID6	1522	254.654	255.484	255.815	255.708	256.362
Unprocessed goods								
Unprocessed goods for intermediate demand.....	00/82	ID6	2	240.498	245.474	245.600	247.523	256.460
Unprocessed foodstuffs and feedstuffs.....	00/82	ID6	21	215.720	214.434	220.421	217.673	224.032
Unprocessed nonfood materials.....	00/82	ID6	22	248.042	257.371	253.212	258.437	268.859
Unprocessed nonfood materials except fuel.....	00/82	ID6	221	325.390	340.867	329.877	329.054	339.724
Unprocessed nonfood materials except fuel to manufacturing industries.....	00/82	ID6	2211	299.943	314.910	304.239	303.422	313.713
Unprocessed nonfood materials except fuel to nonmanufacturing industries.....	00/82	ID6	2212	370.460	371.862	371.872	372.243	373.918
Unprocessed fuel.....	00/82	ID6	222	89.950	87.208	96.164	113.359	123.097
Unprocessed fuel to manufacturing industries.....	00/82	ID6	2221	214.021	211.761	217.977	228.182	232.510
Unprocessed fuel to nonmanufacturing industries.....	00/82	ID6	2222	85.524	82.676	92.042	110.228	120.615
Services								
Services for intermediate demand.....		ID6	3	149.844	150.255	150.694	150.935	151.325
Trade services for intermediate demand ⁵		ID6	33	175.202	174.470	175.565	175.649	175.816
Trade services for manufacturing industries.....	12/12	ID6	331	160.428	159.757	160.214	159.379	160.216
Trade services for nonmanufacturing industries.....	12/12	ID6	332	155.567	154.917	156.410	157.354	156.849
Transportation and warehousing services for intermediate demand.....		ID6	32	158.846	159.636	160.574	160.131	160.279
Transportation of passengers for intermediate demand.....		ID6	321	142.669	137.640	132.328	132.852	132.652
Transportation of passengers for manufacturing industries.....		ID6	3211	142.946	137.819	132.403	132.941	132.736
Transportation of passengers for nonmanufacturing industries.....		ID6	3212	142.698	137.680	132.379	132.902	132.703
Transportation and warehousing of goods for intermediate demand.....		ID6	322	160.689	162.024	163.548	163.014	163.195
Transportation and warehousing of goods for manufacturing industries.....	12/12	ID6	3221	129.998	131.213	131.437	131.251	131.632
Transportation and warehousing of goods for nonmanufacturing industries.....	12/12	ID6	3222	144.569	145.731	147.395	146.844	146.938
Services less trade, transportation, and warehousing for intermediate demand.....		ID6	31	141.321	141.901	142.106	142.502	142.980
Services less trade, transportation, and warehousing for manufacturing industries.....		ID6	311	132.883	133.506	133.812	134.135	134.303
Services less trade, transportation, and warehousing for nonmanufacturing industries.....		ID6	312	141.589	142.168	142.369	142.768	143.257
Construction								
Construction for intermediate demand.....		ID6	4	147.376	151.679	151.680	151.840	151.935
Intermediate Demand by Commodity Type Special Groupings								
Processed materials less foods and feeds.....	00/82	ID6	9111	258.004	259.622	255.543	254.942	256.637
Processed foods and feeds.....	00/82	ID6	9112	240.946	240.364	240.780	242.544	245.711
Processed energy goods.....	00/82	ID6	9113	250.078	254.555	235.440	233.310	239.846
Processed materials less energy.....	00/82	ID6	9118	254.897	255.532	255.758	255.810	256.460
Processed materials less foods and energy.....	00/82	ID6	9115	256.202	256.993	257.195	257.028	257.353
Intermediate distributive services ⁶	04/10	ID6	9116	166.404	166.579	167.845	167.660	167.830
Processed goods plus intermediate distributive services.....	04/10	ID6	9117	146.669	147.277	146.165	145.963	146.736
Unprocessed materials less agricultural products.....	00/82	ID6	9211	254.692	266.332	261.133	266.994	279.628
Unprocessed energy materials ⁷	00/82	ID6	9212	187.409	198.567	190.906	198.217	210.463
Unprocessed materials less energy.....	00/82	ID6	9213	268.352	267.875	274.398	271.842	277.371
Unprocessed nonfood materials less energy ⁸	00/82	ID6	9216	425.264	427.317	435.337	433.315	436.290
Intermediate Demand by Production Flow								
Stage 4 Intermediate Demand								
Stage 4 intermediate demand.....		ID5	4	150.711	151.278	151.110	151.113	151.712
Inputs to stage 4 goods producers.....		ID5	41	145.913	146.206	146.619	146.215	146.628
Goods.....		ID5	411	138.088	138.294	138.771	138.663	138.868
Foods.....		ID5	4111	139.122	139.159	140.400	140.179	140.892
Energy.....		ID5	4112	130.061	133.472	132.357	130.864	130.679
Goods excluding foods and energy.....		ID5	4113	138.113	138.315	138.690	138.613	138.743
Services.....		ID5	412	171.960	172.543	172.740	171.355	172.461
Trade services.....		ID5	4123	184.341	184.776	184.989	182.921	184.415
Transportation and warehousing services.....		ID5	4122	137.113	137.229	136.540	136.530	136.984
Transportation of passengers.....		ID5	41221	142.973	137.842	132.423	132.961	132.756
Transportation and warehousing of goods.....		ID5	41222	145.044	146.196	146.388	146.270	146.883
Services less trade, transportation, and warehousing.....		ID5	4121	133.328	134.431	134.843	135.106	135.208
Inputs to stage 4 services producers.....		ID5	42	149.655	150.378	150.073	150.423	151.199

See footnotes at end of table.

Table 3. Producer price indexes for Final Demand-Intermediate Demand groupings, seasonally adjusted — Continued

[July 2024, Index base Nov. 2009=100, unless otherwise indicated]

Grouping	Other index base	Commodity code		Seasonally adjusted index ¹				
		Group code	Item code	Mar. 2024	Apr. 2024 ^P	May 2024 ^P	June 2024 ^P	July 2024 ^P
Goods.....		ID5	421	147.345	148.361	146.935	146.924	147.500
Foods.....		ID5	4211	148.969	148.902	149.422	148.659	150.841
Energy.....		ID5	4212	143.725	145.607	140.328	140.992	141.364
Goods excluding foods and energy.....		ID5	4213	148.091	148.928	149.164	149.016	149.206
Services.....		ID5	422	150.202	150.823	150.892	151.361	152.204
Trade services.....		ID5	4223	164.549	164.816	165.811	165.528	166.138
Transportation and warehousing services.....		ID5	4222	155.933	156.298	156.084	154.992	154.866
Transportation of passengers.....		ID5	42221	142.382	137.301	131.934	132.466	132.263
Transportation and warehousing of goods.....		ID5	42222	158.887	160.176	160.835	159.462	159.349
Services less trade, transportation, and warehousing.....		ID5	4221	146.996	147.676	147.675	148.385	149.348
Construction.....		ID5	423	147.376	151.679	151.680	151.840	151.935
Inputs to stage 4 construction producers.....		ID5	43	163.266	163.786	162.894	162.379	162.645
Goods.....		ID5	431	167.756	168.570	167.264	166.462	166.868
Energy.....		ID5	4312	150.426	155.238	141.485	135.628	140.496
Goods excluding foods and energy.....		ID5	4313	173.342	173.773	173.689	173.372	173.340
Services.....		ID5	432	151.729	151.519	151.658	151.865	151.780
Trade services.....		ID5	4323	169.709	167.830	167.671	167.885	167.421
Transportation and warehousing services.....		ID5	4322	145.828	146.660	146.740	146.434	147.252
Transportation of passengers.....		ID5	43221	149.020	143.682	138.043	138.603	138.390
Transportation and warehousing of goods.....		ID5	43222	146.526	147.511	147.729	147.400	148.247
Services less trade, transportation, and warehousing.....		ID5	4321	133.204	133.998	134.402	134.789	134.685
Stage 3 Intermediate Demand								
Stage 3 intermediate demand.....		ID5	3	147.363	147.661	147.206	146.908	148.078
Inputs to stage 3 goods producers.....		ID5	31	154.414	153.969	154.691	154.564	156.059
Goods.....		ID5	311	149.346	149.045	149.942	149.839	151.569
Foods.....		ID5	3111	161.538	159.822	163.173	164.423	170.578
Energy.....		ID5	3112	134.178	134.202	128.602	126.796	128.305
Goods excluding foods and energy.....		ID5	3113	149.216	149.493	149.743	149.132	149.081
Services.....		ID5	312	163.558	162.588	162.587	162.371	162.863
Trade services.....		ID5	3123	170.641	168.178	168.017	167.658	168.144
Transportation and warehousing services.....		ID5	3122	149.178	149.806	149.834	149.558	150.362
Transportation of passengers.....		ID5	31221	152.221	146.762	140.994	141.567	141.349
Transportation and warehousing of goods.....		ID5	31222	148.800	149.763	150.110	149.788	150.648
Services less trade, transportation, and warehousing.....		ID5	3121	136.815	137.564	137.985	138.343	138.197
Inputs to stage 3 services producers.....		ID5	32	140.979	141.799	140.496	140.065	141.015
Goods.....		ID5	321	127.478	129.385	119.781	117.943	122.451
Foods.....		ID5	3211	154.040	153.201	153.454	153.220	154.545
Energy.....		ID5	3212	127.653	130.384	114.408	111.551	118.881
Goods excluding foods and energy.....		ID5	3213	137.013	137.733	137.946	137.636	137.825
Services.....		ID5	322	144.360	144.846	145.714	145.646	145.671
Trade services.....		ID5	3223	196.544	194.730	197.272	199.601	197.693
Transportation and warehousing services.....		ID5	3222	167.576	168.687	171.412	170.893	171.004
Transportation of passengers.....		ID5	32221	104.743	104.496	104.256	104.157	104.169
Transportation and warehousing of goods.....		ID5	32222	168.103	169.220	171.960	171.439	171.550
Services less trade, transportation, and warehousing.....		ID5	3221	135.359	135.813	136.074	135.987	136.104
Construction.....		ID5	323	147.376	151.679	151.680	151.840	151.935
Inputs to stage 3 construction producers.....		ID5	33	141.213	142.029	141.794	142.041	142.029
Goods.....		ID5	331	135.021	136.400	136.004	135.718	135.590
Goods excluding foods and energy.....		ID5	3313	172.048	173.806	173.302	172.937	172.774
Services.....		ID5	332	167.314	167.567	167.492	168.409	168.532
Trade services.....		ID5	3323	171.971	172.197	172.137	173.126	173.267
Transportation and warehousing services.....		ID5	3322	115.527	116.613	116.966	117.039	117.431
Transportation and warehousing of goods.....		ID5	33222	121.944	123.090	123.462	123.539	123.953
Services less trade, transportation, and warehousing.....		ID5	3321	128.371	128.489	127.993	128.403	128.133
Stage 2 Intermediate Demand								
Stage 2 intermediate demand.....		ID5	2	134.431	136.265	135.921	136.936	138.392
Inputs to stage 2 goods producers.....		ID5	21	119.719	122.640	121.512	123.011	125.687
Goods.....		ID5	211	113.002	116.607	114.923	116.733	120.382
Foods.....		ID5	2111	137.929	137.266	139.414	138.950	138.723
Energy.....		ID5	2112	83.446	88.436	84.935	87.789	92.992
Goods excluding foods and energy.....		ID5	2113	140.313	141.944	142.780	143.079	144.432
Services.....		ID5	212	153.557	154.475	155.058	155.705	155.512
Trade services.....		ID5	2123	173.471	173.924	175.324	176.962	177.143
Transportation and warehousing services.....		ID5	2122	169.979	172.243	172.473	172.434	171.945
Transportation of passengers.....		ID5	21221	143.064	138.150	132.959	133.467	133.272
Transportation and warehousing of goods.....		ID5	21222	171.608	174.225	174.719	174.653	174.149
Services less trade, transportation, and warehousing.....		ID5	2121	140.087	140.364	140.456	140.752	140.388
Construction.....		ID5	213	147.376	151.679	151.680	151.840	151.935

See footnotes at end of table.

Table 3. Producer price indexes for Final Demand-Intermediate Demand groupings, seasonally adjusted — Continued

[July 2024, Index base Nov. 2009=100, unless otherwise indicated]

Grouping	Other index base	Commodity code		Seasonally adjusted index ¹				
		Group code	Item code	Mar. 2024	Apr. 2024 ^P	May 2024 ^P	June 2024 ^P	July 2024 ^P
Inputs to stage 2 services producers.....		ID5	22	147.968	148.395	149.030	149.414	149.318
Goods.....		ID5	221	143.442	143.894	143.260	143.228	144.065
Foods.....		ID5	2211	111.016	110.048	110.199	111.022	111.786
Energy.....		ID5	2212	154.273	156.374	140.452	139.101	145.825
Goods excluding foods and energy.....		ID5	2213	143.470	143.833	144.194	144.237	144.690
Services.....		ID5	222	148.108	148.444	149.248	149.687	149.472
Trade services.....		ID5	2223	187.179	181.510	189.346	192.358	188.949
Transportation and warehousing services.....		ID5	2222	149.629	150.679	155.638	155.356	154.909
Transportation of passengers.....		ID5	22221	143.366	138.257	132.861	133.396	133.192
Transportation and warehousing of goods.....		ID5	22222	151.371	153.557	160.438	160.005	159.511
Services less trade, transportation, and warehousing.....		ID5	2221	147.055	147.620	147.793	148.169	148.119
Construction.....		ID5	223	147.376	151.679	151.680	151.840	151.935
Stage 1 Intermediate Demand								
Stage 1 intermediate demand.....		ID5	1	146.071	146.490	145.527	145.590	146.540
Inputs to stage 1 goods producers.....		ID5	11	141.500	141.572	141.379	141.151	141.749
Goods.....		ID5	111	137.763	138.071	137.680	137.382	138.023
Foods.....		ID5	1111	131.894	130.561	133.750	133.224	131.464
Energy.....		ID5	1112	123.172	124.374	119.033	119.106	121.414
Goods excluding foods and energy.....		ID5	1113	145.811	146.191	146.375	146.016	146.678
Services.....		ID5	112	155.864	155.253	155.628	155.596	156.087
Trade services.....		ID5	1123	169.296	167.092	167.676	167.212	167.918
Transportation and warehousing services.....		ID5	1122	159.343	159.848	159.337	159.731	159.286
Transportation of passengers.....		ID5	11221	142.946	137.816	132.397	132.936	132.731
Transportation and warehousing of goods.....		ID5	11222	161.590	163.490	164.204	164.556	164.057
Services less trade, transportation, and warehousing.....		ID5	1121	113.014	114.273	114.458	114.893	115.177
Construction.....		ID5	113	147.376	151.679	151.680	151.840	151.935
Inputs to stage 1 services producers.....		ID5	12	147.545	148.156	146.898	147.216	148.406
Goods.....		ID5	121	147.017	148.269	143.438	143.057	144.936
Foods.....		ID5	1211	138.847	140.324	131.800	141.575	148.617
Energy.....		ID5	1212	156.541	159.782	143.721	142.422	148.050
Goods excluding foods and energy.....		ID5	1213	150.646	151.026	151.255	151.209	151.415
Services.....		ID5	122	147.087	147.425	147.676	148.288	149.182
Trade services.....		ID5	1223	175.256	173.949	175.645	176.243	175.597
Transportation and warehousing services.....		ID5	1222	147.891	146.691	145.355	145.341	145.601
Transportation of passengers.....		ID5	12221	142.860	137.734	132.318	132.857	132.652
Transportation and warehousing of goods.....		ID5	12222	166.353	167.092	167.763	167.456	167.989
Services less trade, transportation, and warehousing.....		ID5	1221	142.493	143.207	143.539	144.234	145.361
Construction.....		ID5	123	147.376	151.679	151.680	151.840	151.935
Inputs to stage 1 construction producers.....		ID5	13	163.576	164.114	162.276	161.975	162.873
Goods.....		ID5	131	165.741	166.450	163.737	163.179	164.371
Energy.....		ID5	1312	138.398	142.346	115.677	113.096	123.660
Goods excluding foods and energy.....		ID5	1313	171.744	172.073	172.208	171.878	171.977
Services.....		ID5	132	159.308	159.430	159.728	160.053	160.233
Trade services.....		ID5	1323	169.143	168.996	169.307	169.859	169.841
Transportation and warehousing services.....		ID5	1322	120.240	120.962	121.186	120.874	121.591
Transportation and warehousing of goods.....		ID5	13222	124.373	125.120	125.352	125.028	125.771
Services less trade, transportation, and warehousing.....		ID5	1321	140.899	141.656	142.058	142.731	142.433
Intermediate Demand by Production Flow Special Groupings								
Total goods inputs to stage 4 intermediate demand.....	04/10	ID5	9411	143.783	144.345	143.894	143.676	144.025
Total services inputs to stage 4 intermediate demand.....	04/10	ID5	9412	153.252	153.806	153.897	154.101	154.911
Total construction inputs to stage 4 intermediate demand.....	04/10	ID5	9413	146.155	150.422	150.424	150.582	150.676
Total foods inputs to stage 4 intermediate demand.....	04/10	ID5	9414	140.212	140.204	141.115	140.671	141.986
Total energy goods inputs to stage 4 intermediate demand.....	04/10	ID5	9415	132.436	134.638	128.687	128.277	129.258
Total goods less foods and energy inputs to stage 4 intermediate demand.....	04/10	ID5	9416	147.129	147.514	147.749	147.601	147.703
Total goods inputs to stage 3 intermediate demand.....	04/10	ID5	9311	136.577	136.850	135.131	134.608	136.906
Total services inputs to stage 3 intermediate demand.....	04/10	ID5	9312	146.636	146.880	147.591	147.508	147.610
Total construction inputs to stage 3 intermediate demand.....	04/10	ID5	9313	146.155	150.422	150.424	150.582	150.676
Total foods inputs to stage 3 intermediate demand.....	04/10	ID5	9314	143.720	142.200	145.159	146.260	151.701
Total energy goods inputs to stage 3 intermediate demand.....	04/10	ID5	9315	126.177	128.454	114.324	111.678	118.004
Total goods less foods and energy inputs to stage 3 intermediate demand.....	04/10	ID5	9316	141.443	141.801	142.023	141.487	141.473
Total goods inputs to stage 2 intermediate demand.....	04/10	ID5	9211	110.571	113.689	112.190	113.728	116.918
Total services inputs to stage 2 intermediate demand.....	04/10	ID5	9212	149.888	150.363	151.117	151.608	151.397
Total construction inputs to stage 2 intermediate demand.....	04/10	ID5	9213	146.155	150.422	150.424	150.582	150.676
Total foods inputs to stage 2 intermediate demand.....	04/10	ID5	9214	138.426	137.753	139.883	139.437	139.225
Total energy goods inputs to stage 2 intermediate demand.....	04/10	ID5	9215	82.492	87.346	83.780	86.528	91.639
Total goods less foods and energy inputs to stage 2 intermediate demand.....	04/10	ID5	9216	133.002	134.260	134.944	135.170	136.247
Total goods inputs to stage 1 intermediate demand.....	04/10	ID5	9111	129.350	129.965	127.948	127.619	128.639

See footnotes at end of table.

Table 3. Producer price indexes for Final Demand-Intermediate Demand groupings, seasonally adjusted — Continued

[July 2024, Index base Nov. 2009=100, unless otherwise indicated]

Grouping	Other index base	Commodity code		Seasonally adjusted index ¹				
		Group code	Item code	Mar. 2024	Apr. 2024 ^p	May 2024 ^p	June 2024 ^p	July 2024 ^p
Total services inputs to stage 1 intermediate demand.	04/10	ID5	9112	148.626	148.785	149.059	149.539	150.313
Total construction inputs to stage 1 intermediate demand.	04/10	ID5	9117	146.155	150.422	150.424	150.582	150.676
Total foods inputs to stage 1 intermediate demand.	04/10	ID5	9114	124.198	123.010	125.738	125.482	124.031
Total energy goods inputs to stage 1 intermediate demand.	04/10	ID5	9115	136.428	138.811	126.644	125.824	130.363
Total goods less foods and energy inputs to stage 1 intermediate demand.	04/10	ID5	9116	126.541	126.848	127.003	126.790	127.126

¹ All indexes are subject to revision for 4 months after their originally scheduled publication to incorporate late reports and corrections by survey respondents. In addition, seasonally adjusted indexes are subject to change for up to 5 years due to the recalculation of seasonal factors published each January.

² PPI defines Total finished as including only the personal consumption and private capital investment portions of final demand.

³ Trade indexes measure changes in margins received by wholesalers and retailers.

⁴ The PPI definition of foods does not include food and beverages for immediate consumption. PPI defines food and beverages for immediate consumption as the service of preparing meals, snacks, and beverages to customer order for immediate on-premises and off-premises consumption.

⁵ Distributive services include transportation, warehousing, and trade of goods.

⁶ Includes intermediate trade, transportation, and warehousing services.

⁷ Includes crude petroleum.

⁸ Excludes crude petroleum.

p Preliminary

“-” Data not available.