

NEWS RELEASE

BUREAU OF LABOR STATISTICS
U. S. D E P A R T M E N T O F L A B O R



Transmission of material in this release is embargoed until
8:30 a.m. (ET) Thursday, May 16, 2024

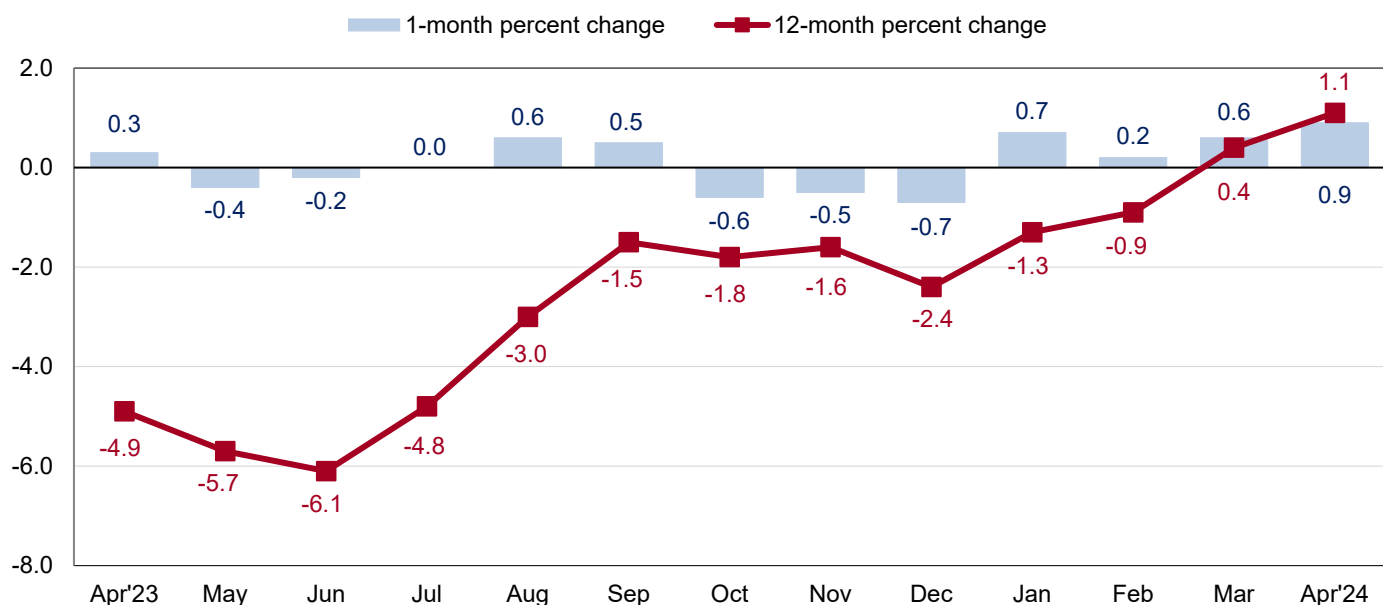
USDL-24-0946

Technical information: (202) 691-7101 • MXPinfo@bls.gov • www.bls.gov/mxp
Media contact: (202) 691-5902 • PressOffice@bls.gov

U.S. IMPORT AND EXPORT PRICE INDEXES – APRIL 2024

U.S. imports increased 0.9 percent in April, after advancing 0.6 percent in March, the U.S. Bureau of Labor Statistics reported today. Higher fuel and nonfuel import prices contributed to the overall rise. Prices for U.S. exports increased 0.5 percent in April following a 0.1-percent advance the previous month.

Chart 1. One-month and 12-month percent changes in the Import Price Index: April 2023 – April 2024



Imports

The price index for U.S. imports advanced 0.9 percent in April, the largest 1-month increase since the index rose 2.9 percent in March 2022. Prices for U.S. imports last declined on a monthly basis in December 2023. Import prices advanced 1.1 percent over the past 12 months, the largest over-the-year increase since December 2022. (See table 1.)

Fuel Imports: Prices for import fuel rose 2.4 percent in April, after advancing 5.4 percent the previous month. Import fuel prices have not decreased on a monthly basis since the index fell 8.0 percent in December 2023. Prices for import fuel increased 3.3 percent for the year ended in April. Import petroleum prices rose 2.9 percent in April following a 10.7-percent advance from December 2023 to March 2024. Prices for import petroleum also increased on a 12-month basis, rising 5.2 percent over the past year. In contrast, the price index for import natural gas fell 9.2 percent in April, after declining 29.7 percent in March and 14.3 percent in February. Prices for natural gas last advanced on a 1-month basis in November 2023. Natural gas prices decreased 42.5 percent from April 2023 to April 2024.

All Imports Excluding Fuel: Nonfuel import prices increased 0.7 percent in April following a 0.2-percent advance in March. The April increase was the largest monthly advance since the index rose 1.2 percent in March 2022. Higher prices for nonfuel industrial supplies and materials; foods, feeds, and beverages; automotive vehicles; capital goods; and consumer goods in April all contributed to the advance in nonfuel prices. Prices for nonfuel imports rose 0.9 percent over the past 12 months, the largest over-the-year advance since December 2022.

Foods, Feeds, and Beverages: Prices for foods, feeds, and beverages rose 1.7 percent in April, after a 1.6-percent advance the previous month. The April increase was the largest 1-month rise since July 2023. Higher prices for bakery and confectionary products and fruit in April more than offset lower vegetable prices.

Nonfuel Industrial Supplies and Materials: Nonfuel industrial supplies and materials prices increased 3.0 percent in April following a 1.1-percent advance in March. The April rise was the largest monthly increase since March 2022. The April advance was led by higher prices for other agricultural products.

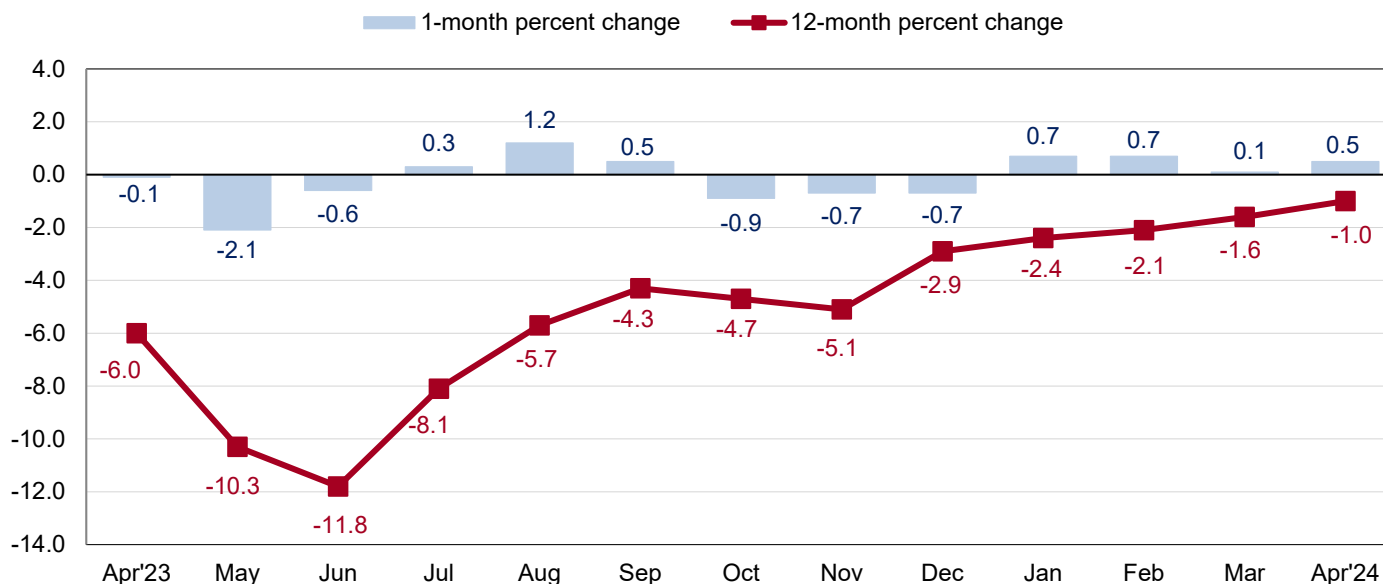
Finished Goods: Prices for each of the major finished goods import categories increased in April. Prices for automotive vehicles advanced 0.3 percent following a 0.2-percent increase in March. Consumer goods prices advanced 0.1 percent in April, after declining 0.3 percent the previous month. Higher prices in April for coins, gems, jewelry, and collectibles; and television and video receivers led the rise in consumer goods prices. The price index for capital goods ticked up 0.1 percent in April, after decreasing 0.2 percent in March.

Table A. Percent change in Import and Export Price Indexes, selected categories

Month	IMPORTS			EXPORTS		
	All imports	Fuel imports	Nonfuel imports	All exports	Agricultural exports	Non-agricultural exports
2023						
April.....	0.3	4.6	-0.1	-0.1	0.4	-0.1
May.....	-0.4	-5.0	0.0	-2.1	-2.3	-2.1
June.....	-0.2	1.1	-0.3	-0.6	-1.4	-0.5
July.....	0.0	1.2	-0.1	0.3	0.5	0.4
August.....	0.6	8.8	-0.2	1.2	-1.9	1.6
September.....	0.5	6.4	-0.2	0.5	-1.1	0.7
October.....	-0.6	-3.9	-0.2	-0.9	-1.0	-0.9
November.....	-0.5	-6.3	0.1	-0.7	0.0	-0.8
December.....	-0.7	-8.0	0.1	-0.7	-0.3	-0.7
2024						
January.....	0.7	1.7 ^r	0.6	0.7 ^r	-1.4 ^r	0.9 ^r
February.....	0.2 ^r	1.1 ^r	0.1 ^r	0.7	0.6 ^r	0.7 ^r
March.....	0.6 ^r	5.4 ^r	0.2 ^r	0.1 ^r	-1.3 ^r	0.3 ^r
April.....	0.9	2.4	0.7	0.5	-0.9	0.7
Apr. 2022 to 2023.....	-4.9	-26.2	-1.9	-6.0	-3.9	-6.3
Apr. 2023 to 2024.....	1.1	3.3	0.9	-1.0	-10.2	0.1

r Revised

Chart 2. One-month and 12-month percent changes in the Export Price Index: April 2023 – April 2024



Exports

U.S. export prices rose 0.5 percent in April following a 0.1-percent advance in March. Export prices have not decreased on a monthly basis since December 2023. Higher nonagricultural prices in April more than offset lower agricultural prices. Despite the recent increases, the price index for U.S. exports declined 1.0 percent over the past year, the smallest over-the-year drop since February 2023. (See table 2.)

Agricultural Exports: The price index for agricultural exports fell 0.9 percent in April, after declining 1.3 percent the previous month. Lower prices for other animal feeds, fruits, and vegetables in April more than offset higher prices for meat, soybeans, and corn. Export agricultural prices decreased 10.2 percent from April 2023 to April 2024, the largest 12-month drop since November 2023.

All Exports Excluding Agriculture: Prices for nonagricultural exports advanced 0.7 percent in April following a 0.3-percent increase in March. Nonagricultural export prices last recorded a 1-month drop in December 2023. Higher prices for nonagricultural industrial supplies and materials, capital goods, automotive vehicles, and consumer goods in April more than offset lower prices for nonagricultural foods. Prices for nonagricultural exports ticked up 0.1 percent for the year ended in April, the first 12-month advance since January 2023.

Nonagricultural Industrial Supplies and Materials: The price index for nonagricultural industrial supplies and materials rose 1.1 percent in April, after increasing 0.5 percent the previous month. Higher prices for nonferrous metals and fuels in April led the advance.

Finished Goods: Prices for each of the major finished goods export categories advanced in April. Capital goods prices advanced 0.4 percent following a 0.1-percent rise in March. Higher prices in April for electric apparatus and parts; scientific and medical machinery; and computers, peripherals, and semiconductors drove the overall advance. The price index for automotive vehicles rose 0.8 percent in April, the largest monthly increase since September 2023. Higher parts prices in April led the advance in automotive vehicles prices. Prices for consumer goods ticked up 0.1 percent in April, after increasing 0.4 percent the previous month.

More information for the major import and export price indexes can be found at www.bls.gov/web/ximpim/largest.htm.

Measures of Import and Export Prices by Locality

Imports by Locality of Origin: Prices for imports from China edged down 0.1 percent in April, after being unchanged in March. The price index for imports from China last advanced on a monthly basis in October 2022. Import prices from China declined 2.2 percent for the year ended in April. The price index for imports from Japan fell 0.1 percent in April following a 0.9-percent decline the previous month. Prices for imports from Japan last increased on a 1-month basis in January 2024. Despite the recent decreases, import prices from Japan rose 0.3 percent over the past year. In contrast, import prices from Canada increased 1.9 percent in April, the largest monthly advance since August 2023. The price index for imports from Canada fell 0.4 percent over the past 12 months. Prices for imports from Mexico and the European Union also increased in April, rising 0.9 percent and 0.4 percent, respectively. (See table 7.)

Exports by Locality of Destination: Export prices to China rose 1.2 percent in April, after increasing 0.4 percent in March. The April increase was the largest 1-month advance since February 2023. The price index for exports to China fell 3.2 percent for the year ended in April. Prices for exports to Japan increased 2.1 percent in April, the largest monthly advance since the index rose 5.0 percent in March 2022. Despite the April increase, export prices to Japan decreased 4.3 percent over the past year. The price index for exports to Canada rose 0.5 percent in April following a 0.4-percent advance the previous month. The April increase was the largest 1-month rise since September 2023. Export prices to Canada advanced 0.2 percent from April 2023 to April 2024. Prices for exports to Mexico increased 1.7 percent in April and export prices to the European Union rose 1.2 percent over the same period. (See table 8.)

Terms of Trade Indexes: Terms of trade indexes are based on country, region, or grouping and measure the change in the purchasing power of exports relative to imports. U.S. terms of trade with China advanced 1.3 percent in April following a 0.4-percent increase in March. Both higher export prices to China and lower import prices from China in April contributed to the rise in U.S. terms of trade with China. Despite the recent increases, U.S. terms of trade with China fell 1.0 percent over the past year. The index for U.S. terms of trade with Japan advanced 2.2 percent in April, after declining 1.0 percent the previous month. U.S. terms of trade with Japan decreased 4.6 percent for the year ended in April. U.S. terms of trade with Canada fell 1.3 percent in April, the largest 1-month drop since August 2023. The index for U.S. terms of trade with Mexico advanced 0.7 percent in April and U.S. terms of trade with the European Union increased 0.8 percent over the same period. (See table 9.)

Import and Export Services

Imports: Import air passenger fares rose 1.2 percent in April, after advancing 0.3 percent in March. The April rise was the largest monthly increase since a 6.9-percent advance in December 2023. Import air passenger fares also advanced on a 12-month basis, increasing 5.9 percent for the year ended in April. Import air freight prices rose 4.8 percent in April following a 1.5-percent increase the previous month. The April advance was driven by an 8.3-percent rise in Asian air freight prices. Despite the recent increases, import air freight prices fell 2.8 percent over the past year. (See table 10.)

Exports: The index for export air passenger fares advanced 0.5 percent in April, after increasing 4.0 percent the previous month. Higher Latin American/Caribbean and Asian fares in April more than offset lower European fares. Despite the recent advances, export air passenger fares fell 5.1 percent over the past 12 months. Export air freight prices decreased 2.1 percent in April following a 1.1-percent increase in March. Lower prices for European and Asian air freight in April contributed to the drop. Prices for export air freight declined 7.6 percent from April 2023 to April 2024.

U.S. Import and Export Price Index data for May 2024 are scheduled for release on Friday, June 14, 2024, at 8:30 a.m. (ET).

Table 1. U.S. import price indexes and percent changes for selected categories of goods: April 2023 to April 2024

[2000=100, unless otherwise noted]

Description	End Use	Relative importance Mar. 2024 ¹	Index		Percent change				
			Mar. 2024	Apr. 2024	Annual	Monthly			
					Apr. 2023 to Apr. 2024	Dec. 2023 to Jan. 2024	Jan. 2024 to Feb. 2024	Feb. 2024 to Mar. 2024	Mar. 2024 to Apr. 2024
All commodities		100.000	140.5	141.8	1.1	0.7	0.2	0.6	0.9
All imports excluding food and fuels (Dec. 2010=100)		84.314	108.3	109.0	0.4	0.7	0.1	0.1	0.6
All imports excluding petroleum		91.878	124.1	125.0	0.7	0.6	0.1	0.1	0.7
All imports excluding fuels (Dec. 2001=100)		91.613	128.1	129.0	0.9	0.6	0.1	0.2	0.7
Foods, feeds, & beverages	0	7.299	221.7	225.4	6.8	1.4	0.2	1.6	1.7
Agricultural foods, feeds & beverages, excluding distilled beverages.....	00	5.971	250.3	255.8	10.3	1.7	-0.4	2.0	2.2
Nonagricultural foods (fish, distilled beverages).....	01	1.328	152.4	151.5	-6.5	0.4	3.1	-0.5	-0.6
Industrial supplies & materials	1	23.054	242.6	249.2	0.6	0.5	0.0	2.7	2.7
Industrial supplies & materials excluding petroleum.....		15.077	197.8	203.0	-1.7	-0.2	-0.8	0.6	2.6
Industrial supplies & materials excluding fuels (Dec. 2001=100).....		14.655	222.5	229.1	-0.9	0.0	-0.5	1.1	3.0
Industrial supplies & materials, durable....		9.327	215.9	219.8	-2.5	0.1	-0.5	1.1	1.8
Industrial supplies & materials nondurable excluding petroleum.....		5.605	176.8	184.0	-0.4	-0.6	-1.3	-0.2	4.1
Fuels & lubricants.....	10	8.387	286.6	293.5	3.3	1.7	1.1	5.4	2.4
Petroleum & petroleum products.....	100	8.122	311.7	320.6	5.2	2.0	1.7	6.7	2.9
Crude petroleum.....	10000	5.504	317.6	333.1	8.5	1.1	3.4	5.7	4.9
Fuels, n.e.s.-coals & gas.....	101	0.265	124.3	113.1	-34.8	-3.6	-11.0	-21.3	-9.0
Natural gas.....	10110	0.167	94.5	85.8	-42.5	-4.8	-14.3	-29.7	-9.2
Paper & paper base stocks.....	11	0.525	136.9	138.6	-0.9	-0.6	-1.3	-0.6	1.2
Materials associated with nondurable supplies & materials.....	12	4.815	195.7	206.4	2.5	-0.4	-0.5	1.4	5.5
Unfinished metals related to durable goods.....	14	3.390	314.3	323.3	-5.4	1.1	-1.7	1.2	2.9
Finished metals related to durable goods.....	15	2.607	219.0	223.4	2.1	-1.5	-0.5	2.4	2.0
Capital goods	2	28.600	93.5	93.6	-0.1	0.4	0.2	-0.2	0.1
Nonelectrical machinery.....	21	22.627	84.2	84.2	-0.5	0.1	0.1	0.0	0.0
Transportation equipment excluding motor vehicles (Dec. 2001=100).....	22	1.676	160.3	160.7	5.4	1.6	1.4	1.7	0.2
Automotive vehicles, parts & engines	3	13.583	120.3	120.7	2.6	0.8	0.1	0.2	0.3
Automotive vehicles, parts and engines, 2 digit (Dec. 2023=100).....	30	13.583	101.0	101.4	-	0.8	0.0	0.2	0.4
Consumer goods, excluding automotives	4	27.464	110.7	110.8	0.5	1.1	0.4	-0.3	0.1
Nondurables, manufactured.....	40	13.788	128.0	128.0	2.1	2.0	0.2	0.0	0.0
Durables, manufactured.....	41	12.690	94.5	94.7	-0.8	0.1	0.1	-0.1	0.2
Nonmanufactured consumer goods.....	42	0.985	125.0	125.5	-3.0	-0.2	7.3	-5.9	0.4

¹ Relative importance figures are based on 2022 trade values.

NOTES: Data may be revised in each of the 3 months after original publication.

Dash = Not available

Table 2. U.S. export price indexes and percent changes for selected categories of goods: April 2023 to April 2024

[2000=100, unless otherwise noted]

Description	End Use	Relative importance Mar. 2024 ¹	Index		Percent change				
			Mar. 2024	Apr. 2024	Annual Apr. 2023 to Apr. 2024	Monthly			
						Dec. 2023 to Jan. 2024	Jan. 2024 to Feb. 2024	Feb. 2024 to Mar. 2024	Mar. 2024 to Apr. 2024
All commodities		100.000	148.7	149.5	-1.0	0.7	0.7	0.1	0.5
Agricultural commodities		9.370	225.7	223.7	-10.2	-1.4	0.6	-1.3	-0.9
All exports excluding food and fuels (Dec. 2010=100)		74.971	115.2	115.9	0.8	0.1	0.3	0.4	0.6
All exports excluding fuels (June 2022=100)		83.499	99.5	100.0	-0.2	-0.1	0.4	0.2	0.5
Nonagricultural commodities		90.630	142.7	143.7	0.1	0.9	0.7	0.3	0.7
Foods, feeds, & beverages	0	8.529	226.5	225.0	-10.6	-1.4	0.4	-1.6	-0.7
Agricultural foods, feeds & beverages, excluding distilled beverages.....	00	8.150	228.5	227.1	-10.6	-1.5	0.4	-1.6	-0.6
Nonagricultural foods (fish, distilled beverages).....	01	0.378	188.6	185.0	-10.8	0.7	0.8	-0.7	-1.9
Industrial supplies & materials	1	38.496	200.9	203.0	-1.7	1.9	1.5	0.6	1.0
Industrial supplies & materials, durable....		10.930	213.6	217.9	0.5	0.0	0.3	1.1	2.0
Industrial supplies & materials, nondurable.....		27.565	193.3	194.6	-2.6	2.7	2.0	0.3	0.7
Agricultural industrial supplies & materials.....	10	1.192	215.9	209.5	-7.3	-1.2	1.9	0.7	-3.0
Nonagricultural industrial supplies & materials.....		37.303	200.5	202.8	-1.6	2.0	1.5	0.5	1.1
Fuels & lubricants.....	11	16.501	242.7	245.3	-2.8	4.6	2.2	-0.2	1.1
Nonagricultural supplies & materials excluding fuels & building materials.....	12	20.047	195.1	197.6	-0.7	0.0	0.9	1.1	1.3
Selected building materials.....	13	0.755	150.5	152.0	2.1	-1.3	0.5	0.9	1.0
Capital goods	2	31.609	122.7	123.2	1.8	0.6	0.3	0.1	0.4
Nonelectrical machinery.....	21	22.510	102.4	102.7	1.2	0.4	0.3	0.0	0.3
Transportation equipment excluding motor vehicles (Dec. 2001=100).....	22	5.608	218.3	218.7	5.8	2.1	0.5	0.1	0.2
Automotive vehicles, parts & engines	3	8.599	127.6	128.6	4.0	0.4	0.1	-0.1	0.8
Vehicles-passenger (Dec. 2023=100).....	30	8.599	100.4	101.1	-	0.4	0.0	0.0	0.7
Consumer goods, excluding automotives	4	12.768	117.8	117.9	-1.3	-1.1	-0.2	0.4	0.1
Nondurables, manufactured.....	40	6.734	107.2	107.3	-3.1	-2.2	-0.3	-0.1	0.1
Durables, manufactured.....	41	4.880	121.5	121.7	2.1	0.3	0.0	1.3	0.2
Nonmanufactured consumer goods (Dec. 2018=100).....	42	1.153	126.8	126.3	-4.0	0.0	0.0	-0.2	-0.4

¹ Relative importance figures are based on 2022 trade values.

NOTES: Data may be revised in each of the 3 months after original publication.

Dash = Not available

Table 3. U.S. import price indexes and percent changes for selected industries: April 2023 to April 2024
 [December 2005=100, unless otherwise noted]

Description	NAICS	Relative importance Mar. 2024 ¹	Index		Percent change				
			Mar. 2024	Apr. 2024	Annual Apr. 2023 to Apr. 2024	Monthly			
						Dec. 2023 to Jan. 2024	Jan. 2024 to Feb. 2024	Feb. 2024 to Mar. 2024	Mar. 2024 to Apr. 2024
Nonmanufacturing.....		8.235	153.2	158.4	7.2	1.3	2.6	2.6	3.4
Agriculture, forestry, fishing and hunting.....	11	2.275	242.7	247.2	15.0	3.2	2.8	-0.5	1.9
Crop production.....	111	1.902	255.9	261.9	17.5	4.0	2.0	-0.9	2.3
Animal production (Dec. 2022=100).....	112	0.251	122.9	121.1	10.4	-2.0	10.9	2.4	-1.5
Mining.....	21	5.960	144.2	149.9	4.4	0.5	2.6	3.8	4.0
Oil and gas extraction.....	211	5.717	142.5	148.5	6.0	0.8	2.6	3.8	4.2
Mining (except oil and gas) (Dec. 2022=100).....	212	0.244	110.4	109.5	-23.0	-5.3	2.6	3.4	-0.8
Manufacturing.....		91.448	122.2	122.8	0.1	0.7	0.0	0.3	0.5
Manufacturing, part 1.....	31	11.955	139.7	142.2	2.2	0.1	0.6	0.7	1.8
Food manufacturing.....	311	4.353	190.7	199.9	5.6	0.1	1.5	1.9	4.8
Beverage and tobacco product manufacturing.....	312	1.175	142.2	142.3	1.9	-0.2	0.1	0.5	0.1
Textile mills (Dec. 2023=100).....	313	0.321	100.8	102.0	-	0.1	0.4	0.3	1.2
Textile product mills (Dec. 2023=100).....	314	0.895	100.1	100.0	-	0.1	0.1	-0.1	-0.1
Apparel manufacturing.....	315	3.520	119.1	119.0	-0.3	0.3	0.0	0.0	-0.1
Manufacturing, part 2.....	32	19.068	142.6	142.5	-1.2	1.5	-0.4	0.8	-0.1
Paper manufacturing.....	322	0.995	120.6	121.3	-1.3	-0.3	-1.1	-0.2	0.6
Printing and related support activities (Dec. 2023=100).....	323	0.147	100.1	100.0	-	0.5	-0.2	-0.2	-0.1
Petroleum and coal products manufacturing.....	324	2.324	140.5	138.9	-2.2	4.1	-3.0	9.5	-1.1
Chemical manufacturing.....	325	11.112	151.3	151.1	-0.5	1.7	-0.2	-0.2	-0.1
Plastics and rubber products manufacturing.....	326	2.542	131.2	131.5	-1.5	-0.2	0.8	-0.3	0.2
Nonmetallic mineral product manufacturing.....	327	1.095	144.2	144.2	-1.8	0.1	0.0	-0.5	0.0
Manufacturing, part 3.....	33	60.425	112.7	113.1	0.1	0.4	0.0	0.2	0.4
Primary metal manufacturing.....	331	4.611	219.6	228.5	-1.2	0.9	-1.5	1.4	4.1
Fabricated metal product manufacturing.....	332	3.221	146.9	144.6	-3.5	-1.2	-0.1	1.5	-1.6
Machinery manufacturing.....	333	8.004	132.3	132.3	0.5	0.2	0.4	0.0	0.0
Computer and electronic product manufacturing.....	334	16.496	72.1	72.2	-1.1	0.0	0.0	-0.1	0.1
Electrical equipment, appliance, and component manufacturing.....	335	6.291	125.7	125.8	-1.5	0.8	0.2	-1.2	0.1
Transportation equipment manufacturing.....	336	14.035	119.8	120.1	2.9	0.9	0.3	0.3	0.3
Furniture and related product manufacturing.....	337	1.863	127.9	127.7	-0.9	0.6	-0.2	0.0	-0.2
Miscellaneous manufacturing.....	339	5.903	129.5	130.1	1.7	0.5	0.2	0.3	0.5

¹ Relative importance figures are based on 2022 trade values.

NOTES: Data may be revised in each of the 3 months after original publication.

Dash = Not available

Table 4. U.S. export price indexes and percent changes for selected industries: April 2023 to April 2024
 [December 2005=100, unless otherwise noted]

Description	NAICS	Relative importance Mar. 2024 ¹	Index		Percent change				
			Mar. 2024	Apr. 2024	Annual Apr. 2023 to Apr. 2024	Monthly			
						Dec. 2023 to Jan. 2024	Jan. 2024 to Feb. 2024	Feb. 2024 to Mar. 2024	Mar. 2024 to Apr. 2024
Nonmanufacturing.....		14.462	172.7	172.9	-6.6	3.1	1.0	-2.3	0.1
Agriculture, forestry, fishing and hunting.....	11	4.472	183.6	182.7	-15.8	-2.3	1.1	-2.7	-0.5
Crop production.....	111	4.164	192.5	191.7	-16.9	-2.6	0.9	-3.0	-0.4
Mining.....	21	9.990	109.8	110.2	-1.6	5.8	1.0	-2.1	0.4
Oil and gas extraction (Dec. 2021=100)...	211	8.672	97.6	98.4	1.4	6.7	1.1	-2.4	0.8
Mining (except oil and gas).....	212	1.319	134.8	130.9	-17.9	0.7	0.3	-0.4	-2.9
Manufacturing.....		83.884	134.5	135.3	0.1	0.2	0.5	0.6	0.6
Manufacturing, part 1.....	31	6.384	169.8	167.5	-4.7	-0.8	-0.2	0.1	-1.4
Food manufacturing.....	311	4.574	199.0	196.1	-5.2	-0.9	-0.6	0.2	-1.5
Beverage and tobacco product manufacturing.....	312	0.525	140.2	137.1	-8.8	-0.6	-0.5	-1.1	-2.2
Manufacturing, part 2.....	32	25.832	135.5	136.6	-2.4	-0.1	1.6	0.9	0.8
Wood product manufacturing (Dec. 2017=100).....	321	0.439	122.4	124.7	6.8	1.5	0.9	1.7	1.9
Petroleum and coal products manufacturing.....	324	6.174	151.1	154.5	-4.4	2.4	4.6	3.0	2.3
Chemical manufacturing.....	325	14.580	131.7	132.2	-2.2	-1.1	0.9	0.3	0.4
Plastics and rubber products manufacturing.....	326	2.242	134.7	134.6	1.3	0.5	0.4	-0.6	-0.1
Nonmetallic mineral product manufacturing.....	327	0.733	131.9	132.1	1.0	-0.5	-0.2	0.0	0.2
Manufacturing, part 3.....	33	51.668	130.5	131.4	2.0	0.4	0.2	0.4	0.7
Primary metal manufacturing.....	331	4.422	201.8	210.4	0.3	-0.5	-1.0	3.0	4.3
Machinery manufacturing.....	333	9.487	151.4	152.0	2.1	0.3	0.3	0.1	0.4
Computer and electronic product manufacturing.....	334	12.582	83.3	83.4	-0.2	0.1	0.2	0.1	0.1
Transportation equipment manufacturing..	336	13.274	148.7	149.5	5.0	1.1	0.2	0.1	0.5
Furniture and related product manufacturing (Dec. 2023=100).....	337	0.352	101.8	101.9	–	1.8	0.0	0.0	0.1
Miscellaneous manufacturing.....	339	5.059	141.6	142.5	3.2	0.9	0.2	0.6	0.6

¹ Relative importance figures are based on 2022 trade values.

NOTES: Data may be revised in each of the 3 months after original publication.

Dash = Not available

Table 5. U.S. import price indexes and percent changes for selected categories of goods: April 2023 to April 2024

[2000=100, unless otherwise noted]

Description	Harmonized system	Relative importance Mar. 2024 ¹	Index		Percent change				
			Mar. 2024	Apr. 2024	Annual	Monthly			
					Apr. 2023 to Apr. 2024	Dec. 2023 to Jan. 2024	Jan. 2024 to Feb. 2024	Feb. 2024 to Mar. 2024	Mar. 2024 to Apr. 2024
Live animals; animal products.....	I	1.478	238.0	239.3	1.3	1.6	4.6	0.9	0.5
Meat and edible meat offal.....	02	0.431	343.9	353.6	12.4	1.7	2.4	3.8	2.8
Fish and crustaceans, molluscs and other aquatic invertebrates.....	03	0.697	148.0	146.0	-8.5	3.2	6.4	-0.7	-1.4
Vegetable products.....	II	2.172	261.7	265.6	5.4	3.3	-2.1	-1.2	1.5
Edible vegetables, roots, and tubers.....	07	0.555	554.7	542.3	18.0	9.4	-14.1	9.2	-2.2
Edible fruit and nuts; peel of citrus fruit or melons.....	08	0.777	131.1	137.3	10.3	6.1	-4.9	-1.7	4.7
Coffee, tea, mate and spices.....	09	0.378	297.3	300.7	-1.5	-5.6	1.3	1.0	1.1
Animal or vegetable fats and oils (Dec. 2009=100).....	III	0.453	150.0	152.3	2.7	-2.4	0.5	3.0	1.5
Animal or vegetable fats and oils and their cleavage products; prepared (Dec. 2023=100).....	15	0.453	101.0	102.5	-	-2.4	0.5	3.0	1.5
Prepared foodstuffs, beverages, and tobacco.....	IV	3.530	203.8	214.8	10.3	-0.3	1.0	1.8	5.4
Sugars and sugar confectionary (Dec. 2021=100).....	17	0.246	128.4	127.8	12.4	2.6	1.1	1.7	-0.5
Cocoa and cocoa preparations (Dec. 2009=100).....	18	0.378	196.0	283.7	132.9	4.4	14.1	21.4	44.7
Preparations of cereals, flour, starch or milk; bakers' wares (Dec. 2023=100).....	19	0.492	99.8	99.8	-	0.0	-0.1	-0.1	0.0
Miscellaneous edible preparations (Dec. 2022=100).....	21	0.395	93.6	98.9	1.6	-2.6	-2.2	-2.1	5.7
Beverages, spirits, and vinegar.....	22	1.113	155.1	155.2	1.2	-0.4	0.1	0.5	0.1
Mineral products.....	V	8.401	292.8	300.4	2.1	1.6	0.9	5.2	2.6
Mineral fuels, oils and residuals, bituminous substances and mineral waxes.....	27	8.101	286.3	293.9	3.4	1.9	0.9	5.3	2.7
Products of the chemical or allied industries.....	VI	10.806	173.7	173.3	0.2	1.5	0.1	0.0	-0.2
Organic chemicals.....	29	2.273	138.5	137.8	-5.5	-3.6	0.3	0.4	-0.5
Pharmaceutical products.....	30	5.701	155.5	155.8	5.0	4.5	0.6	0.1	0.2
Fertilizers (Dec. 2022=100).....	31	0.225	63.8	64.0	-9.1	0.3	-1.4	2.6	0.3
Tanning extracts; dye, pigments, varnish, paints & putty (Dec. 2022=100).....	32	0.198	100.8	100.6	-0.1	0.1	-0.5	-0.1	-0.2
Miscellaneous chemical products.....	38	0.910	114.1	112.7	-7.0	-0.9	-0.5	-0.7	-1.2
Plastics and articles thereof; rubber and articles thereof.....	VII	3.748	153.5	153.9	-2.8	0.1	0.2	-0.2	0.3
Plastics and articles thereof.....	39	2.499	150.5	151.2	-4.7	0.3	0.2	-0.4	0.5
Rubber and articles thereof.....	40	1.249	162.2	162.1	0.7	-0.4	0.2	0.0	-0.1
Printed matter (Dec. 2023=100).....	49	0.168	99.8	99.8	-	0.0	0.0	-0.2	0.0
Textile and textile articles.....	XI	4.536	120.6	120.6	-0.2	0.2	0.0	0.0	0.0
Articles of apparel and clothing accessories, knitted or crocheted (Dec. 2023=100).....	61	1.954	100.3	100.1	-	0.3	0.1	-0.1	-0.2
Articles of apparel and clothing accessories, not knitted or crocheted.....	62	1.420	126.8	127.1	-0.5	0.1	0.1	0.0	0.2
Made-up or worn textile articles (Dec. 2023=100).....	63	0.622	99.6	99.3	-	-0.4	0.0	0.0	-0.3
Headgear, umbrellas, artificial flowers, etc.....	XII	1.450	126.7	126.6	0.2	-0.1	0.0	0.0	-0.1
Footwear and parts of such articles.....	64	1.186	123.7	123.7	0.6	0.0	0.0	0.0	0.0

See footnotes at end of table.

Table 5. U.S. import price indexes and percent changes for selected categories of goods: April 2023 to April 2024 — Continued

[2000=100, unless otherwise noted]

Description	Harmoni- zied system	Relative importance Mar. 2024 ¹	Index		Percent change				
			Mar. 2024	Apr. 2024	Annual	Monthly			
					Apr. 2023 to Apr. 2024	Dec. 2023 to Jan. 2024	Jan. 2024 to Feb. 2024	Feb. 2024 to Mar. 2024	Mar. 2024 to Apr. 2024
Stone, plaster, cement, asbestos, ceramics, glass etc.....	XIII	0.937	136.8	136.7	-1.3	0.6	0.0	-0.6	-0.1
Articles of stone, plaster, cement, asbestos, or mica (Dec. 2020=100).....	68	0.324	100.2	100.7	-1.9	-0.2	0.0	-0.9	0.5
Glass and glassware (Dec. 2021=100).....	70	0.341	109.5	109.5	0.1	1.7	0.0	-0.1	0.0
Pearls, stones, precious metals, imitation jewelry, and coins.....	XIV	3.068	227.7	239.4	2.3	0.2	-0.8	1.7	5.1
Pearls, precious stones, precious metals jewelry, coin (Dec. 2023=100).....	71	3.068	101.2	106.4	–	0.2	-0.8	1.8	5.1
Base metals and articles of base metals. ...	XV	5.839	227.8	228.5	-4.0	0.0	-0.6	0.8	0.3
Articles of iron or steel.....	73	1.730	191.0	191.7	-7.6	-0.3	-0.4	-1.0	0.4
Copper and articles thereof.....	74	0.509	389.1	420.4	8.1	1.6	-1.0	3.0	8.0
Aluminum and articles thereof.....	76	1.090	191.3	187.8	-2.2	-2.1	-1.0	5.4	-1.8
Tools, implements, cutlery, spoons and forks, of base metal; parts thereof.....	82	0.415	133.1	132.9	0.6	0.6	0.5	-0.4	-0.2
Miscellaneous articles of base metal.....	83	0.513	142.6	142.0	-4.5	-0.5	-0.1	-0.1	-0.4
Machinery, electrical equipment, TV image and sound recorders, parts, etc.....	XVI	30.472	82.3	82.3	-0.5	0.4	0.1	-0.2	0.0
Machinery and mechanical appliances; parts thereof.....	84	15.347	90.0	90.0	0.4	0.3	0.4	0.1	0.0
Electrical machinery and equip, sound and TV recorders & reproducers, parts.....	85	15.125	75.1	75.2	-1.4	0.3	-0.1	-0.5	0.1
Vehicles, aircraft, vessels and associated transport equipment.....	XVII	11.797	123.7	124.0	2.2	0.7	0.0	0.2	0.2
Motor vehicles and their parts.....	87	11.035	122.8	123.2	2.4	0.7	0.1	0.1	0.3
Aircraft, spacecraft, and parts thereof (Dec. 2020=100).....	88	0.621	107.5	107.8	-0.6	0.1	-0.4	0.6	0.3
Optical, photo, measuring, medical & musical instruments; & timepieces.....	XVIII	4.196	110.9	111.2	3.2	1.1	0.5	0.3	0.3
Optical, photographic, measuring and medical instruments.....	90	3.890	106.4	106.8	3.1	0.9	0.6	0.5	0.4
Miscellaneous manufactured articles.....	XX	4.578	120.5	120.4	0.1	0.5	0.0	0.2	-0.1
Furniture & stuffed furnishings; lamps & lighting fittings, nesoi; prefab bldgs.....	94	2.539	126.9	126.9	-0.7	0.5	-0.1	0.0	0.0
Toys, games and sports equipment; parts and accessories thereof.....	95	1.726	107.4	107.3	0.8	0.5	0.0	0.5	-0.1
Miscellaneous manufactured articles.....	96	0.314	152.6	152.6	3.6	2.6	0.0	0.8	0.0

¹ Relative importance figures are based on 2022 trade values.

NOTES: Data may be revised in each of the 3 months after original publication.

Dash = Not available

Table 6. U.S. export price indexes and percent changes for selected categories of goods: April 2023 to April 2024

[2000=100, unless otherwise noted]

Description	Harmonized system	Relative importance Mar. 2024 ¹	Index		Percent change				
			Mar. 2024	Apr. 2024	Annual	Monthly			
					Apr. 2023 to Apr. 2024	Dec. 2023 to Jan. 2024	Jan. 2024 to Feb. 2024	Feb. 2024 to Mar. 2024	Mar. 2024 to Apr. 2024
Live animals; animal products.....	I	1.949	264.2	273.0	3.4	0.2	0.2	1.8	3.3
Meat & edible meat offal (Dec. 2006=100)...	02	1.262	229.4	235.5	9.4	1.5	-0.1	2.6	2.7
Vegetable products.....	II	4.029	236.2	234.7	-18.8	-2.6	0.5	-3.6	-0.6
Edible fruit and nuts; peel of citrus fruit or melons.....	08	0.866	151.9	146.5	5.8	-1.6	6.4	-1.2	-3.6
Cereals.....	10	1.115	227.7	229.2	-29.7	-2.9	1.0	-5.1	0.7
Oilseeds and misc. grains, seeds, fruits, plants, straw and fodder.....	12	1.612	237.7	242.9	-21.4	-2.3	-3.8	-4.8	2.2
Prepared foodstuffs, beverages, and tobacco.....	IV	2.864	180.7	174.7	-7.7	-1.3	-1.2	-1.4	-3.3
Preparations of cereals, flour, starch or milk; bakers' wares (Dec. 2023=100).....	19	0.295	100.2	100.3	-	0.0	0.3	-0.1	0.1
Miscellaneous edible preparations (Dec. 2017=100).....	21	0.590	111.7	106.3	-9.3	-1.2	-2.4	-2.9	-4.8
Residues and waste from the food industries; prepared animal feed.....	23	0.649	271.4	242.9	-24.6	-4.5	-2.5	-3.4	-10.5
Mineral products.....	V	16.206	291.2	294.6	-2.6	4.6	2.3	-0.3	1.2
Ores, slag and ash (Dec. 2012=100).....	26	0.400	119.4	120.4	-17.5	-1.7	-1.4	1.6	0.8
Mineral fuels, oils and residuals, bituminous substances and mineral waxes.....	27	15.612	279.6	282.9	-2.2	4.8	2.4	-0.3	1.2
Products of the chemical or allied industries.....	VI	12.473	158.3	158.7	-2.9	-1.4	0.5	0.5	0.3
Pharmaceutical products.....	30	4.339	103.4	103.5	-4.0	-3.8	-0.1	-0.1	0.1
Essential oils and resinoids; perfumery cosmetic or toilet preparations.....	33	0.801	145.9	145.9	-2.2	1.6	-2.9	0.0	0.0
Miscellaneous chemical products.....	38	2.301	194.1	194.5	1.4	-0.3	0.8	0.5	0.2
Rubber and articles thereof.....	40	0.908	189.8	190.3	12.9	0.6	9.6	-0.8	0.3
Wood, wood charcoal, cork, straw, baskets and wickerwork (Dec. 2014=100).....	IX	0.485	112.7	115.1	4.7	1.9	1.3	1.9	2.1
Wood and articles of wood; wood charcoal (Dec. 2023=100).....	44	0.485	105.2	107.3	-	1.8	1.4	1.9	2.0
Woodpulp and recovered paper (Dec. 2019=100).....	47	0.541	163.0	163.4	4.7	1.1	0.5	1.9	0.2
Cotton, including yarns and woven fabrics thereof.....	52	0.699	166.9	160.9	-0.3	-1.9	5.0	3.5	-3.6
Stone, plaster, cement, asbestos, ceramics, glass etc.....	XIII	0.746	153.8	153.9	5.1	1.3	-0.2	0.1	0.1
Glass and glassware (Dec. 2019=100).....	70	0.353	114.7	114.9	3.5	-0.5	0.0	0.3	0.2
Pearls, stones, precious metals, imitation jewelry, and coins.....	XIV	4.928	322.1	334.6	3.1	0.7	-1.1	3.6	3.9
Pearls, precious stones, precious metals; jewelry, coin (Dec. 2023=100).....	71	4.928	103.2	107.2	-	0.7	-1.1	3.6	3.9
Base metals and articles of base metals. ...	XV	4.425	209.0	210.9	-1.7	-0.2	0.7	-0.4	0.9
Copper and articles thereof.....	74	0.546	264.0	284.0	4.7	0.7	0.8	1.5	7.6
Aluminum and articles thereof.....	76	0.711	147.3	148.9	0.5	0.7	0.5	0.8	1.1
Miscellaneous articles of base metal (Dec. 2022=100).....	83	0.336	105.8	105.7	4.1	-0.6	1.8	-0.2	-0.1
Machinery, electrical equipment, TV image and sound recorders, parts, etc.....	XVI	26.377	108.0	108.4	1.9	0.8	0.4	0.3	0.4
Machinery and mechanical appliances; parts thereof.....	84	15.576	132.5	133.0	2.7	1.1	0.5	-0.2	0.4

See footnotes at end of table.

Table 6. U.S. export price indexes and percent changes for selected categories of goods: April 2023 to April 2024 — Continued

[2000=100, unless otherwise noted]

Description	Harmonized system	Relative importance Mar. 2024 ¹	Index		Percent change				
			Mar. 2024	Apr. 2024	Annual	Monthly			
					Apr. 2023 to Apr. 2024	Dec. 2023 to Jan. 2024	Jan. 2024 to Feb. 2024	Feb. 2024 to Mar. 2024	Mar. 2024 to Apr. 2024
Electrical machinery and equipment and parts and accessories thereof.....	85	10.802	82.4	82.8	0.7	0.2	0.4	0.9	0.5
Vehicles, aircraft, vessels and associated transport equipment.....	XVII	9.725	154.7	155.3	3.7	0.3	0.1	0.1	0.4
Motor vehicles and their parts.....	87	7.258	129.2	129.7	4.0	0.4	0.1	0.0	0.4
Optical, photo, measuring, medical & musical instruments; & timepieces.....	XVIII	5.742	118.9	120.2	2.7	0.6	-0.3	-0.3	1.1
Optical, photographic, measuring and medical instruments (Dec. 2023=100).....	90	5.691	100.1	101.2	—	0.6	-0.2	-0.3	1.1
Miscellaneous manufactured articles.....	XX	1.160	135.7	135.8	-0.7	0.7	0.1	0.0	0.1
Furniture; stuffed furnishings; lamps and lighting fittings nesoi.....	94	0.576	149.9	150.2	0.2	1.4	0.0	0.1	0.2
Toys, games and sports equipment; parts and accessories thereof.....	95	0.448	118.6	118.6	0.6	0.1	0.1	-0.2	0.0

¹ Relative importance figures are based on 2022 trade values.

NOTES: Data may be revised in each of the 3 months after original publication.

Dash = Not available

Table 7. U.S. import price indexes and percent changes by locality of origin: April 2023 to April 2024
 [2000=100, unless otherwise noted]

Description	Relative importance Mar. 2024 ¹	Index		Percent change				
		Mar. 2024	Apr. 2024	Annual Apr. 2023 to Apr. 2024	Monthly			
					Dec. 2023 to Jan. 2024	Jan. 2024 to Feb. 2024	Feb. 2024 to Mar. 2024	Mar. 2024 to Apr. 2024
Industrialized Countries²	100.000	145.7	147.2	1.3	1.0	0.6	0.5	1.0
Nonmanufacturing.....	10.529	245.9	253.8	2.1	1.5	3.8	3.6	3.2
Manufacturing.....	89.101	137.6	138.7	1.4	0.9	0.3	0.1	0.8
Canada	100.000	170.0	173.3	-0.4	0.6	1.1	1.2	1.9
Nonmanufacturing.....	31.417	240.1	248.3	1.6	1.6	3.7	3.6	3.4
Manufacturing.....	67.750	154.7	156.8	-1.0	0.2	-0.1	0.1	1.4
European Union	100.000	157.9	158.6	2.1	1.1	0.3	0.1	0.4
Manufacturing.....	99.317	153.6	154.2	2.1	1.1	0.3	0.1	0.4
France (Dec. 2003=100)	100.000	157.1	157.5	4.6	4.3	0.1	-0.1	0.3
Germany (Dec. 2003=100)	100.000	124.4	124.9	0.0	-0.1	0.4	0.2	0.4
United Kingdom (Dec. 2003=100)	100.000	138.2	139.3	1.8	0.3	0.7	0.3	0.8
Latin America³	100.000	173.9	175.8	3.6	1.0	0.5	0.8	1.1
Nonmanufacturing.....	13.902	344.8	351.1	10.3	1.8	2.5	0.0	1.8
Manufacturing.....	85.837	139.7	141.2	2.6	0.9	0.1	0.9	1.1
Mexico (Dec. 2003=100)	100.000	147.7	149.0	4.5	1.3	0.4	0.7	0.9
Nonmanufacturing (Dec. 2008=100).....	9.253	191.6	192.5	23.9	8.4	3.0	2.5	0.5
Manufacturing (Dec. 2008=100).....	90.491	100.0	100.9	2.9	0.6	0.2	0.5	0.9
Pacific Rim (Dec. 2003=100)⁴	100.000	101.9	102.2	-1.1	0.0	-0.1	-0.2	0.3
China (Dec. 2003=100)	100.000	100.5	100.4	-2.2	-0.4	-0.1	0.0	-0.1
Japan	100.000	101.4	101.3	0.3	1.2	-0.4	-0.9	-0.1
Taiwan (Dec. 2018=100)	100.000	108.4	108.5	-1.9	-0.5	-0.1	0.0	0.1
Asian NICs⁵	100.000	94.3	95.0	-0.9	-0.3	-0.2	0.1	0.7
ASEAN (Dec. 2003=100)⁶	100.000	100.0	100.9	-2.3	-0.1	-0.2	0.2	0.9
Asia Near East (Dec. 2003=100)⁷	100.000	215.9	227.3	3.4	0.1	1.4	2.0	5.3

¹ Relative importance figures are based on 2022 trade values.

² Western Europe, Canada, Japan, Australia, New Zealand, and South Africa.

³ Mexico, Central America, South America, and the Caribbean.

⁴ China, Japan, Australia, Brunei, Indonesia, Macao, Malaysia, New Zealand, Papua New Guinea, Philippines, and the Asian Newly Industrialized Countries.

⁵ Asian Newly Industrialized Countries - Hong Kong, Singapore, South Korea, and Taiwan.

⁶ Association of Southeast Asian Nations - Brunei, Cambodia, Indonesia, Laos, Malaysia, Myanmar, Philippines, Singapore, Thailand, and Vietnam.

⁷ Bahrain, Iran, Iraq, Israel, Jordan, Kuwait, Lebanon, Oman, Qatar, Saudi Arabia, Syria, United Arab Emirates, and Yemen.

NOTES: Data may be revised in each of the 3 months after original publication.

Regions are not mutually exclusive.

Dash = Not available

Table 8. U.S. export price indexes and percent changes by locality of destination: April 2023 to April 2024
 [December 2017=100, unless otherwise noted]

Description	Relative importance Mar. 2024 ¹	Index		Percent change				
		Mar. 2024	Apr. 2024	Annual Apr. 2023 to Apr. 2024	Monthly			
					Dec. 2023 to Jan. 2024	Jan. 2024 to Feb. 2024	Feb. 2024 to Mar. 2024	Mar. 2024 to Apr. 2024
Industrialized Countries²	100.000	121.9	123.0	1.7	1.2	0.7	0.2	0.9
Nonmanufacturing.....	15.154	145.2	147.3	1.9	5.0	3.5	-1.9	1.4
Manufacturing.....	83.264	119.1	120.1	1.5	0.5	0.3	0.4	0.8
Canada	100.000	128.4	129.1	0.2	-0.4	0.3	0.4	0.5
Nonmanufacturing (Dec. 2020=100).....	7.445	137.7	137.8	1.5	-2.0	1.2	0.7	0.1
Manufacturing (Dec. 2020=100).....	90.759	119.7	120.4	-0.1	-0.3	0.3	0.3	0.6
European Union	100.000	122.0	123.5	4.0	1.6	1.5	1.3	1.2
Nonmanufacturing.....	23.123	146.1	152.3	4.5	1.2	2.8	4.1	4.2
Manufacturing.....	75.357	117.2	117.6	3.2	1.8	1.2	0.4	0.3
Germany	100.000	123.2	124.7	6.8	3.7	0.3	0.7	1.2
Latin America³	100.000	123.8	125.6	0.0	1.1	1.1	0.4	1.5
Nonmanufacturing.....	7.129	135.6	137.4	-5.4	2.6	-0.6	-5.8	1.3
Manufacturing.....	92.311	123.0	124.8	0.4	1.0	1.2	0.9	1.5
Mexico	100.000	122.8	124.9	-0.2	0.7	0.7	0.3	1.7
Nonmanufacturing.....	5.492	104.6	107.6	-12.9	1.1	-4.8	-9.5	2.9
Manufacturing.....	93.666	125.0	127.1	0.6	0.7	1.0	1.0	1.7
Pacific Rim⁴	100.000	114.3	115.8	-0.6	0.8	1.0	0.0	1.3
Nonmanufacturing.....	20.387	118.7	123.0	-6.7	3.1	2.4	-2.1	3.6
Manufacturing.....	78.439	114.9	115.6	1.2	0.1	0.6	0.6	0.6
China	100.000	107.2	108.5	-3.2	-1.4	0.2	0.4	1.2
Nonmanufacturing.....	24.182	103.0	105.8	-11.8	-2.9	-1.3	0.5	2.7
Manufacturing.....	74.334	111.0	111.8	0.3	-0.9	0.6	0.4	0.7
Japan	100.000	109.3	111.6	-4.3	0.8	1.3	-1.8	2.1
Nonmanufacturing.....	21.660	122.1	126.1	-10.6	7.2	5.3	-8.5	3.3
Manufacturing.....	77.154	106.2	108.1	-1.5	-0.9	0.2	0.2	1.8

¹ Relative importance figures are based on 2022 trade values.

² Western Europe, Canada, Japan, Australia, New Zealand, and South Africa.

³ Mexico, Central America, South America, and the Caribbean.

⁴ China, Japan, Australia, Brunei, Indonesia, Macao, Malaysia, New Zealand, Papua New Guinea, Philippines, and the Asian Newly Industrialized Countries.

NOTES: Data may be revised in each of the 3 months after original publication.

Regions are not mutually exclusive.

Dash = Not available

Table 9. U.S. terms of trade indexes and percent changes by locality: April 2023 to April 2024¹
 [December 2017=100, unless otherwise noted]

Description	Index		Percent change				
	Mar. 2024	Apr. 2024	Annual	Monthly			
			Apr. 2023 to Apr. 2024	Dec. 2023 to Jan. 2024	Jan. 2024 to Feb. 2024	Feb. 2024 to Mar. 2024	Mar. 2024 to Apr. 2024
Industrialized Countries²	102.4	102.3	0.5	0.2	0.0	-0.3	-0.1
Canada	99.2	97.9	0.6	-1.0	-0.8	-0.8	-1.3
European Union	104.0	104.8	1.8	0.5	1.2	1.3	0.8
Germany	114.0	114.9	6.8	3.8	-0.1	0.4	0.8
Latin America³	106.0	106.4	-3.4	0.1	0.7	-0.4	0.4
Mexico	107.3	108.1	-4.6	-0.6	0.2	-0.3	0.7
Pacific Rim⁴	110.4	111.5	0.5	0.8	1.1	0.2	1.0
China	106.8	108.2	-1.0	-0.9	0.3	0.4	1.3
Japan	102.9	105.2	-4.6	-0.4	1.7	-1.0	2.2

¹ Terms of trade indexes are derived by dividing the export price index by the corresponding import price index and multiplying by 100.

² Western Europe, Canada, Japan, Australia, New Zealand, and South Africa.

³ Mexico, Central America, South America, and the Caribbean.

⁴ China, Japan, Australia, Brunei, Indonesia, Macao, Malaysia, New Zealand, Papua New Guinea, Philippines, and the Asian Newly Industrialized Countries.

NOTES: Data may be revised in each of the 3 months after original publication.

Regions are not mutually exclusive.

Dash = Not available

Table 10. U.S. international price indexes and percent changes for selected transportation services: April 2023 to April 2024

[2000=100, unless otherwise noted]

Description	Relative importance Mar. 2024 ¹	Index		Percent change				
		Mar. 2024	Apr. 2024	Annual Apr. 2023 to Apr. 2024	Monthly			
					Dec. 2023 to Jan. 2024	Jan. 2024 to Feb. 2024	Feb. 2024 to Mar. 2024	Mar. 2024 to Apr. 2024
Air Freight								
Import Air Freight	100.000	222.1	232.8	-2.8	-15.4	-3.5	1.5	4.8
Europe (Dec. 2003=100).....	25.845	175.2	167.8	-23.7	-13.4	3.4	7.0	-4.2
Asia.....	73.289	222.8	241.4	6.1	-17.2	-5.4	0.0	8.3
Export Air Freight	100.000	176.6	172.9	-7.6	-3.2	2.4	1.1	-2.1
Europe (Dec. 2006=100).....	27.373	132.1	124.1	-14.4	-1.3	1.6	1.0	-6.1
Asia (Dec. 2011=100).....	50.642	144.3	143.4	-2.4	-6.8	3.9	2.1	-0.6
Inbound Air Freight	100.000	170.5	177.2	4.2	-13.0	-2.1	6.2	3.9
Europe (Dec. 2003=100).....	28.215	148.0	149.8	-6.1	-10.9	4.3	8.1	1.2
Asia.....	58.507	159.1	169.4	11.2	-17.0	-3.2	4.9	6.5
Outbound Air Freight	100.000	168.2	168.0	-8.7	-4.5	2.1	-1.6	-0.1
Europe (Dec. 2003=100).....	35.619	165.6	158.0	-9.6	-0.6	1.0	1.0	-4.6
Asia.....	43.537	179.4	185.4	-8.8	-9.3	4.2	-4.0	3.3
Air Passenger Fares								
Import Air Passenger Fares	100.000	178.6	180.8	5.9	-6.2	0.0	0.3	1.2
Europe.....	46.915	194.7	194.0	2.5	1.2	1.3	-1.5	-0.4
Asia.....	12.196	169.3	167.9	-3.5	-18.2	-2.5	7.2	-0.8
Latin America/Caribbean.....	10.355	156.2	142.2	-15.0	-20.9	6.7	7.3	-9.0
Export Air Passenger Fares	100.000	181.2	182.1	-5.1	10.8	-10.1	4.0	0.5
Europe.....	36.337	213.7	208.0	-1.3	7.0	-4.4	4.7	-2.7
Asia.....	11.999	187.0	190.5	-1.9	15.4	-18.8	4.4	1.9
Latin America/Caribbean.....	31.869	178.8	183.6	-11.1	17.3	-15.8	3.2	2.7

¹ Relative importance figures are based on 2022 trade values.

NOTES: Data may be revised in each of the 3 months after original publication.

Dash = Not available

TECHNICAL NOTE

Import and Export Goods and Services Price Indexes - All indexes use a modified Laspeyres formula and are not seasonally adjusted. Price indexes are reweighted annually, with a 2-year lag in the weights. Published series use a base year of 2000=100 where possible. More detailed index series and additional information may be obtained at www.bls.gov/mxp or by calling (202) 691-7101.

Merchandise Goods Classification Systems - The merchandise price indexes are published using three classification systems. Items are classified by end use according to the Bureau of Economic Analysis Classification System, by industry according to the North American Industry Classification System (NAICS), and by product category according to the Harmonized System (HS). While classification by end use and product category are self-explanatory, some notes are in order for classifying items by industry. In the NAICS imports and exports tables, items are classified by output industry, not input industry. As an example, NAICS import index 326 (plastics and rubber products manufacturing) includes outputs such as manufactured plastic rather than inputs such as petroleum. The NAICS classification structure also matches the classification system used by the Producer Price Index (PPI) to produce the NAICS primary products indexes.

Import Price Goods Indexes - Items are classified by the Harmonized Tariff Schedule of the United States Annotated (TSUSA). Import prices are based on U.S. dollar prices paid by the U.S. importer. The prices are generally either "free on board" (f.o.b.) foreign port or "cost, insurance, and freight" (c.i.f.) U.S. port transaction prices, depending on the practices of the individual industry. The index for crude petroleum is calculated from data collected by the U.S. Department of Energy.

Export Price Goods Indexes - Items are classified by the Harmonized Schedule B classification system of the U.S. Bureau of the Census. The prices used are generally either "free alongside ship" (f.a.s.) factory or "free on board" (f.o.b.) transaction prices, depending on the practices of the individual industry. Prices used in the grain index, excluding rice, are obtained from the U.S. Department of Agriculture.

Services Price Indexes - Indexes for import and export air passenger fares calculate changes in the average revenue received per passenger by foreign carriers from U.S. residents and by U.S. carriers from foreign residents, respectively. Data are obtained from an airline consulting service and report on tickets sold by travel agencies, travel websites, and directly by the airlines. Taxes and fees are included in both the import and export air passenger fares indexes. Import air passenger fares data have used the airline consulting service source since September 2008. Before April 2018, the export air passenger fares data were collected directly by BLS from U.S. airlines. The air freight indexes are calculated from data collected directly from airlines. These data exclude mail and passenger baggage. The scope of the service being priced is the movement of freight from airport to airport only, and does not include any ground transportation or port service. The air freight indexes are presented using two definitions: balance of payments (which represents transactions between U.S. and foreign residents) and international (which represents transactions inbound to and outbound from the United States.) Fact sheets specifying detailed information for each services industry are available at www.bls.gov/mxp under "MXP Publications."

Import Price Indexes by Locality of Origin - Prices used in these indexes are a subset of the data collected for the import price indexes. The indexes are specific to a country, region, or grouping and, beginning with January 2002, are based on the North American Industry Classification System (NAICS) covering goods-producing industries. Nonmanufactured goods are defined as NAICS 11 and 21, and manufactured goods are defined as NAICS 31-33.

Export Price Indexes by Locality of Destination - Prices used in these indexes are a subset of the data collected for the export price indexes. The indexes are specific to a country, region, or grouping and are based on the North American Industry Classification System (NAICS) covering goods-producing industries. Nonmanufactured goods are defined as NAICS 11 and 21, and manufactured goods are defined as NAICS 31-33.

Terms of Trade Indexes - Terms of trade indexes measure the relative price of exports in terms of import prices for a specific country, region, or grouping. The indexes are calculated as one country, region, or grouping's all-export goods price index divided by the corresponding all-import goods price index on a scale of 100.

Relative Importance - A relative importance is a specific index's price-updated value share (expressed as a percentage) of overall imports or exports at a specific point in time. Relative importance values are affected by the trade weights at the point indexes are reweighted and index changes relative to other indexes since the reweight point. If an index is rising in value relative to other indexes over time, the relative importance will increase as well.

Revision Policy - To reflect the availability of late reports and corrections by respondents, monthly data may be revised in each of the 3 months after original publication. After 3 months, no further data revisions take place. For example, data first published in the January release will be subject to revision in the releases for February, March, and April.

Rounding Policy - Index values are rounded to the tenth decimal place after being calculated. All percent changes are then derived from the rounded index values and subsequently rounded to the tenth decimal place.

Uses of the Data - The primary use of the indexes is to deflate trade statistics, notably the foreign trade sector of the National Income and Product Accounts (NIPA) constructed by the Department of Commerce. Other published indexes are useful for general market analysis. For trade in international services, balance of payments indexes are used for deflating NIPA, while international indexes are more appropriate for market analysis.

Additional Information - More detailed data are available on the Import/Export Price Indexes home page at www.bls.gov/mxp. For import and export price indexes data requests, send an email to mxpinfo@bls.gov.

If you are deaf, hard of hearing, or have a speech disability, please dial 7-1-1 to access telecommunications relay services.